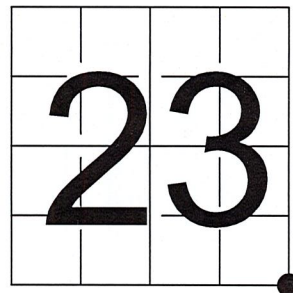


U S PUBLIC LAND SURVEY MONUMENT RECORD - ADDENDUM

NOTE: This form is intended and designed to fulfill all requirements of Wisconsin Administrative Code, Chapter A-E 7.08 U.S. Public Land Survey Monument Record (3) (a-i)

A-E 7.08(3)(a) Identity of corner:
 SOUTHEAST CORNER SECTION 23,
 TOWNSHIP 35 NORTH,
 RANGE 07 EAST OF THE 4TH PM,
 TOWN OF KING,
 COUNTY OF LINCOLN

WISCORS - LINCOLN COUNTY
 N: 237,545.705 USft (237,546.898)
 E: 423,151.842 USft (423,155.338)
 Datum: NAD83 (2011)
 GNSS Method RTK
 GNSS Control WISCORS VRS



The coordinate value shown has been verified by the average of two or more GPS observations at a markedly different time. Coordinates shown in parenthesis are previously published values.

A-E 7.08(3)(b)

Original Surveyor: Alfred Millard

Date of Original Survey	Commenced:	June, 1861	Original Accessories:	
	Completed:	July, 1861	Hemlock	30 N 85° W 8 Links
			Maple	10 S 58° E 17 Links

See previous Certified Land Corner Restoration Q-21 - June 29, 1979 - Surveyor 836 - John H. Fisher - THENCE:

August 15, 1994 - Surveyor 129 - Leonard L. Lampert - indicates this position as "Berntsen monument found" on Lincoln County map L190B.

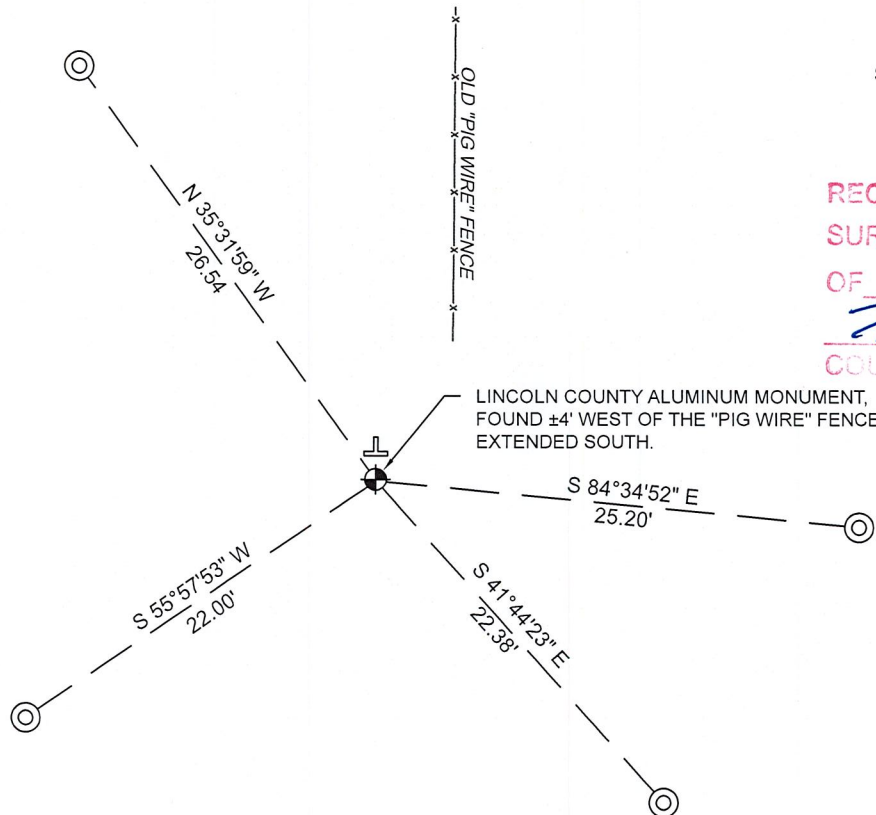
May 23, 2011 - Surveyor 2343 - Kevin P. Bixby - indicates this position as "existing Lincoln County Berntsen monument" on Lincoln County map M606A.

June 14, 2023 - I found a Lincoln County cast aluminum monument with a 4" diameter aluminum cap near the published coordinate position, and near the south end of an old fence running north. The monument flush with grade and has a 1" diameter iron pipe driven along the north edge, the pipe extends ±12" above grade.

I established 4 new reference monuments as shown below.

NOTE: My coordinate value differs with the published coordinate value for this monument. I measured the monument on 06/14/23, 07/19/23, and 08/24/23. The results were substantially the same, and the coordinate values shown are the average of all measurements.

A-E 7.08(3)(c)(d) Plan view of corner with references to at least 4 witness monuments.

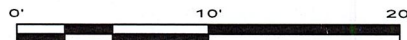


BEARINGS LISTED TO THE NEAREST SECOND ARE REFERENCED TO WISCONSIN COUNTY COORDINATE REFERENCE SYSTEM - LINCOLN COUNTY ZONE. ALL OTHER BEARINGS ARE MAGNETIC.

RECEIVED BY LINCOLN COUNTY SURVEYOR THIS 30TH DAY OF August 20 23
Tony DeMuth
 COUNTY SURVEYOR

LEGEND

- This corner
- 7/8" diameter X 24" long iron rod with 2" diameter aluminum cap, set
- Vinyl T-post, set ±1 foot north of corner



A-E 7.08(3)(e) 1861 Surveyor set a post, 1979 Surveyor set a Lincoln County Berntsen monument, 1994 and 2011 Surveyors found the same, as did I in 2023.

A-E 7.08(3)(f) I accept this monument as a FOUND PERPETUATED LOCATION of the corner.

A-E 7.08(3)(g)(h) This corner was not determined through lost-corner-proportionate methods.

A-E 7.08(3)(i) I, Jeffrey L. DeMuth, Professional Land Surveyor No. S-2656, hereby certify that the corner location on this record was determined by me or under my direction and control, and that this U.S. Public Land Survey Monument Record is correct and complete to the best of my knowledge, and belief.



Jeffrey L. DeMuth
 SIGNATURE _____ August 30, 2023
 DATE

CERTIFIED LAND CORNER RESTORATION

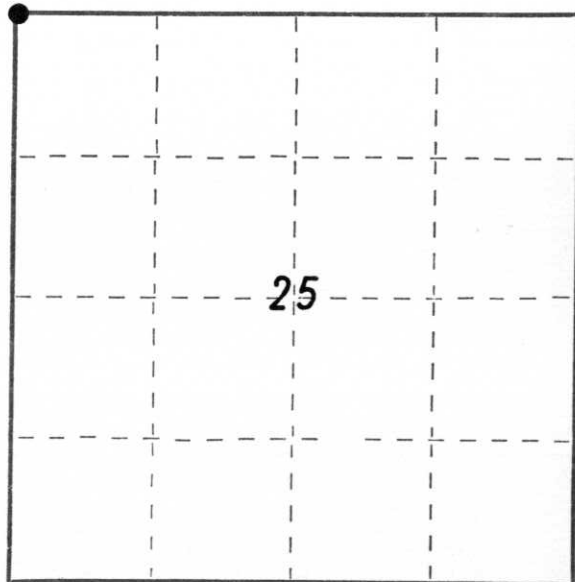
Index No. Q-21

State of Wisconsin }
County of Lincoln } ss.

I John H. Fisher, do hereby certify that on the 19 day of June, 1979, I found evidence of the corner of Township 35, North, Range 7, Fourth, Principal Meridian, as described hereon; and that from this evidence I established a new monument and accessories as described hereon to perpetuate the original location of this corner.

Resident witnesses:

None



○ = Corner monument restored.

History of original corner establishment:

Date of Original Survey: June 1861
Survey Performed by: Alfred Millard - Leputy Surveyor

Witness: 30" Hemlock N85°W, 8 Links
10" Maple S58°E, 17 Links

Description of corner evidence found:

Pig wire fence running north and west

Description of monument and accessories I established to perpetuate the original location of this corner.

Set Lincoln County Berntsen Monument

Witness: 6" White Birch S38°W, 27.2 feet
8" White Birch N86°W, 25.4 feet
10" White Birch N48°W, 28.0 feet
6" Maple N62°E, 12.8 feet



Dated at Minocqua, Wis., this 29th day of June, 1979.

Signature John H. Fisher Title Registered Land Surveyor Registration No. S-836
(County Surveyor, Registered Land Surveyor, or other duly authorized official)

Office of Register of Deeds, County of Lincoln, I hereby certify that the within instrument was filed in this office for record on the _____ day of _____, 19____ at _____ o'clock _____ M.

(Register of Deeds)

By _____ Deputy