

CERTIFIED LAND CORNER RESTORATION

Index No. Q-17

State of Wisconsin }
County of Lincoln } ss.

History of original corner establishment:

I Duane A. Gau, do hereby certify that on the 12 day of October, 1979, I found evidence of the Section corner of Sections 22, 23, 26, 27 Township 35, North, Range 7 East, Fourth, Principal Meridian, as described hereon; and that from this evidence I established a new monument and accessories as described hereon to perpetuate the original location of this corner.

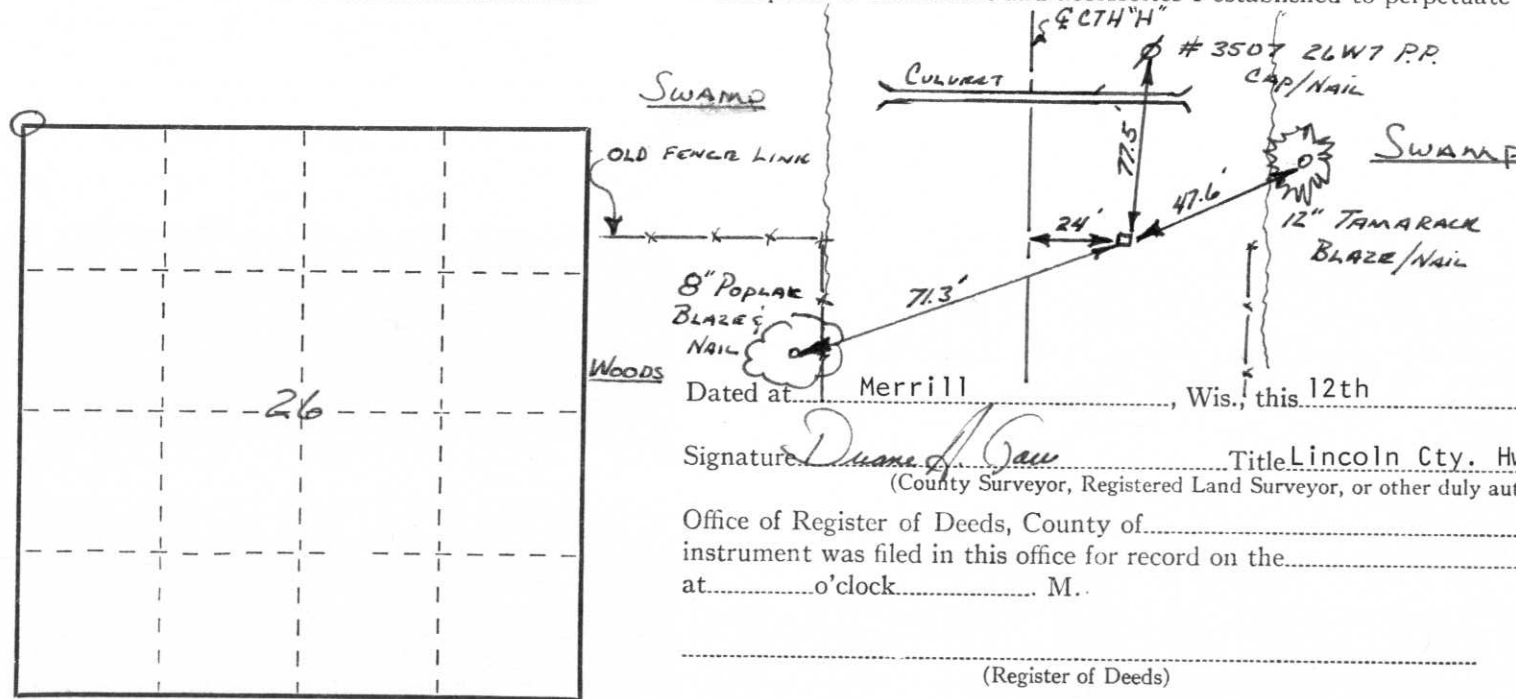
Description of corner evidence found:

Located old poplar mark post with all sections marked on it, also located 1" iron pipe.

Resident witnesses:

.....
.....
.....

Description of monument and accessories I established to perpetuate the original location of this corner.



Replaced old monument with new aluminum monument. Scribed new ties. Monument was reset because of road construction.

Dated at Merrill, Wis., this 12th day of October, 1979

Signature Duane A. Gau Title Lincoln Cty. Hwy. Commissioner Registration No.
(County Surveyor, Registered Land Surveyor, or other duly authorized official)

Office of Register of Deeds, County of, I hereby certify that the within instrument was filed in this office for record on the day of, 19..... at o'clock M.

(Register of Deeds)

By Deputy

○ = Corner monument restored.