

Attachment to Tie Sheet Q-13, T35N, R7E

43507210000

I visited the corner on 8/01/2018 to verify the corner and reference tie monumentation before Town Road work. I found the P.K. Nail, and 3 of the 5 ties from the Gene Wadzinski tie sheet (7/11/2011). The established Coordinates and 3 ties agree with existing monument. I returned on 12/14/2018 to set a Berntsen SMN-1 nail at the Corner position. I found one other tie at this time, the Easterly tie was under the ice and was not verified.

Westerly witness measures 36.66', shown as 36.46' on Tie Sheet.

Anthony R. Dallman 4/02/19

Anthony R. Dallman, PLS-2405

Lincoln County Surveyor



U.S. PUBLIC LAND SURVEY MONUMENT RECORD

NOTE: THIS FORM IS INTENDED AND DESIGNED TO FULFILL ALL REQUIREMENTS OF WISCONSIN ADMINISTRATIVE CODE, CHAPTER A-E 7.08, U.S. PUBLIC LAND SURVEY MONUMENT RECORD (3) (A) (B) (C) (D) (E) (F) (G) (H) (I). AN ADDITIONAL SHEET MAY BE ADDED IF NECESSARY TO CONFORM WITH SAID REQUIREMENTS.

LINCOLN COUNTY

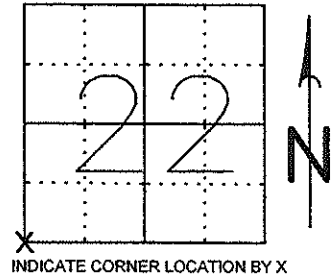
(A) SECTION 22 CORNER IDENTITY SW CORNER P.K NAIL

TOWNSHIP 35 NORTH

RANGE 7 EAST

TOWN, CITY, VILLAGE KING

FOUND
 SET
 TIED
 RETIED



INDICATE CORNER LOCATION BY X

(B) (F) (G) (H) DESCRIPTION OF MONUMENT FOUND AT THIS CORNER AND IF IT WAS ACCEPTED, STATE ALL EVIDENCE (MATERIALS, TESTIMONIAL, OCCUPATIONAL, PLATS, RECORDS, OTHER MONUMENTS) USED AS A BASIS FOR ACCEPTING. IF NOT ACCEPTED OR IF NOTHING WAS FOUND, STATE EVIDENCE USED AS A BASIS FOR ESTABLISHING LOCATION. IF REESTABLISHED THROUGH LOST CORNER PROPORTIONATE METHODS, INDICATE ALL MONUMENTS, DISTANCES, AND DIRECTIONS USED TO ESTABLISH.

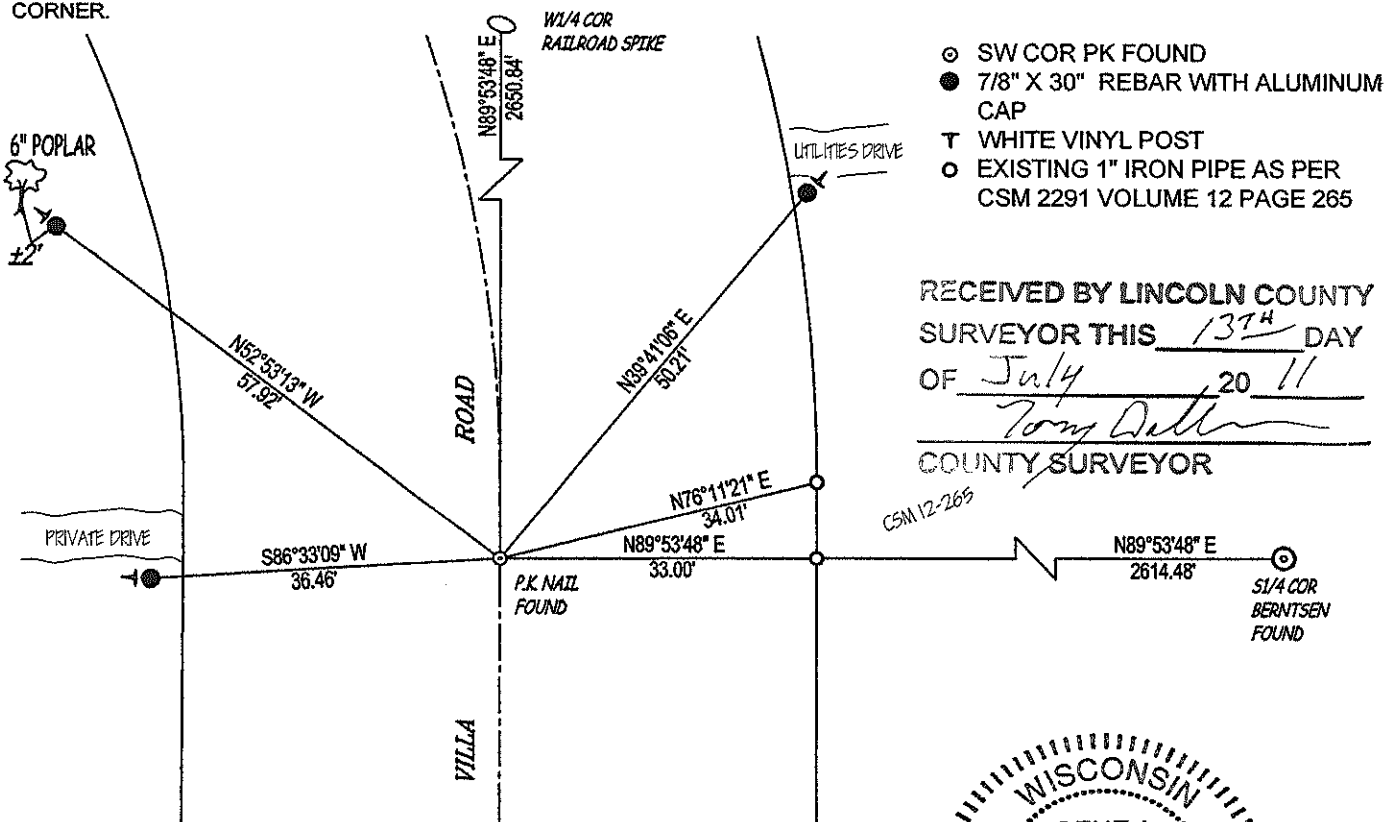
JULY 1, 1861 - ALFRED MILLARD SET A WOODEN POST AT THE ORIGINAL CORNER POSITION.

WITNESSES: 6" PINE N49°W 1.13 LINKS
 9" PINE N15°E 51 LINKS

OCTOBER 18, 1977 - LESTER J. SCHMIDT FOUND A 2" IRON PIPE 4" BELOW ROAD SURFACE. 1-1/2" IRON PIPE WITNESS CORNER BEARS S89°35'34"E, 20.16' AND A P.K. NAIL IN 10" JACK PINE, N40°51'00"W, 38.53'.

MAY 7, 2011 - I RECOVERED A P.K. NAIL MARKING THE CORNER LOCATION. SET FIVE ACCESSORIES TO PERPETUATE THE CORNER LOCATION AS SHOWN BELOW.

(C) (D) (E) PLAN VIEW OF CORNER WITH TIES TO AT LEAST 4 WITNESS MONUMENTS. IF IN DISAGREEMENT WITH PREVIOUSLY ESTABLISHED CORNER, SHOW THE DISTANCES BETWEEN THE TWO CORNERS AND ALSO INDICATE THE TIES TO THE DISPUTED CORNER.



RECEIVED BY LINCOLN COUNTY SURVEYOR THIS 13TH DAY OF July 20 11
Tom Dutton
 COUNTY SURVEYOR

(I) I, GENE J. WADZINSKI RLS 2400
 (TYPE OR PRINT NAME, LICENSE #) CERTIFY THAT THE CORNER LOCATION ON THIS RECORD WAS DETERMINED BY ME OR UNDER MY DIRECTION AND CONTROL AND THAT THIS U.S. PUBLIC LAND SURVEY MONUMENT RECORD IS CORRECT AND COMPLETE TO THE BEST OF MY KNOWLEDGE AND BELIEF.

SIGNATURE *Gene J. Wadzinski* DATE 7/11/11



Q-13

CERTIFIED LAND CORNER RESTORATION

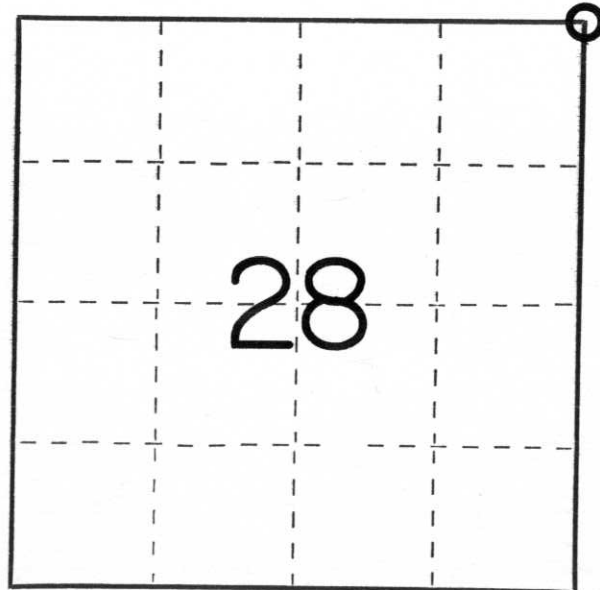
Index No. Q-13

State of Wisconsin }
County of Lincoln } ss.

I Lester J. Schmit, do hereby certify that on the 18th day of October, 1977, I found evidence of the Northeast corner of Section 28 Township 35, North, Range 7 East, Fourth, Principal Meridian, as described hereon; and that from this evidence I established a new monument and accessories as described hereon to perpetuate the original location of this corner.

Resident witnesses:

.....
.....
.....



○ = Corner monument restored.

History of original corner establishment:

Surveyor: Alfred Millard

Date: 1 July 1861

Monumentation: Wood Post

Witnesses: Y Pine 6 N 49° W 1.13 links

Y Pine 9 N 15° E 51 links

Description of corner evidence found: I found a 2" iron pipe, 4" below road surface. 1½" iron pipe witness corner bears S 89°35'34" E, 20.16' and a P.K. Nail in 10" Jack Pine, N 40°51'00" W, 38.53'.

Description of monument and accessories I established to perpetuate the original location of this corner.

Berntsen Monument - 30" (set 4" below the surface of the Town Road)

P.K. Nail in Power Pole # 1207 (stamped on a tag on pole is 3507-27W183) S 58°49'37" E, 25.89'

P.K. Nail in Power Pole # 1206 (This pole is not extended into the ground but is clamped on the south side of a pole which is firmly embedded in the ground) S 85°49'58" W, 228.51'

Dated at Tomahawk, Wis., this 8th day of November, 1977

Signature Lester J. Schmit Title Land Surveyor Registration No. S-1192
(County Surveyor, Registered Land Surveyor, or other duly authorized official)

Office of Register of Deeds, County of....., I hereby certify that the within instrument was filed in this office for record on the..... day of....., 19..... at..... o'clock..... M.

.....
(Register of Deeds)

By..... Deputy