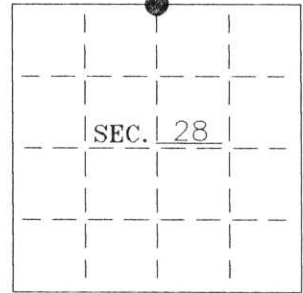


U. S. PUBLIC LAND SURVEY MONUMENT RECORD

Note: This form is intended and designed to fulfill all requirements of Wisconsin Administrative Code-Chapter A-E 7.08 U. S. Public Land Survey Monument Record (3)(a)(b)(c)(d)(e)(f)(g)(h)(i). An additional sheet may be added if necessary to conform with said requirements.

(a) CORNER LOCATION: State Plane Coordinates
 N 1/4 corner of Sec. 28 X ---
 Township 35 North Y ---
 Range 7 East Datum Base ---
 Town King County of Lincoln



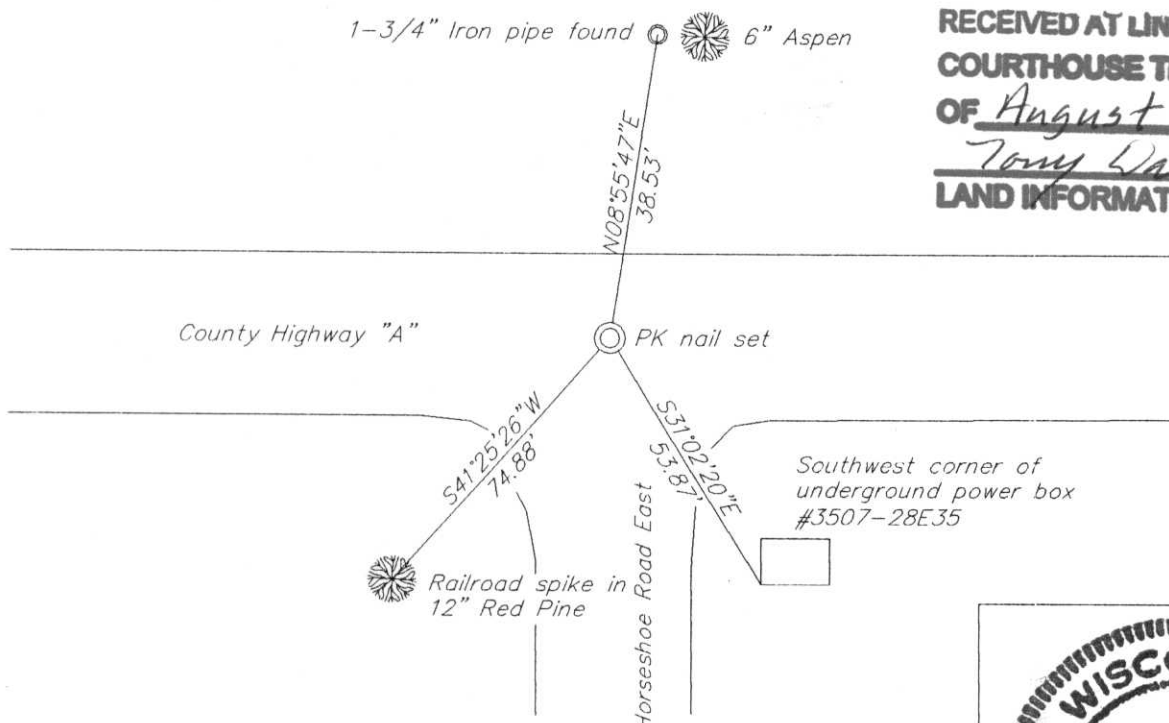
(b) HISTORY OF ORIGINAL CORNER ESTABLISHMENT:
 Original Surveyor: Alfred Millard Original B.T.'S
 Date of Survey: Commenced 1861 12" W. Pine N13°E, 17 lks
 Completed 1861 8" W. Pine S16°E, 17 lks

(b)(f)(g)(h) Description of monument found at this corner and if it was accepted—state all evidence (material—testimonial—occupation—plats—records—other monuments) used as a basis for accepting. If not accepted or if nothing was found state evidence used as basis for establishing location. If reestablished through lost corner proportionate methods indicate all monuments—distances and directions used to establish. Indicate type of monument and sign post found or set.

1994— David L. Lemke (S-1845) set a Berntsen Aluminium Monument as shown on U.S.P.L.S. Monument Record form.

2000— I did not find the Berntsen Monument and set a PK nail in County Highway "A" from Lemke's ties as shown below.

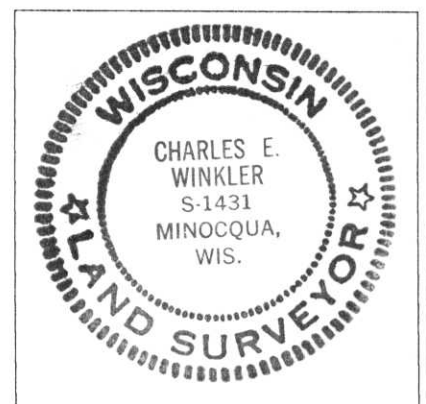
(c)(d)(e) Plan view of corner with ties to at least 4 witness monuments. If in disagreement with previously established corner—show the distances between the two corners and also indicate the ties to the disputed.



RECEIVED AT LINCOLN COUNTY
 COURTHOUSE THIS 3RD DAY
 OF August 20 01
 Tony Dallen
 LAND INFORMATION OFFICE

(i) I Charles E. Winkler S-1431
 hereby certify that the corner location on this record was determined by me or under my direction and control and that this U.S. Public Land Survey Monument Record is correct and complete to the best of my knowledge and belief.

Signature Charles E. Winkler Date 8/2/2001
 Foltz and Associates, Inc.



INDEX NO. Q-11

U.S. PUBLIC LAND SURVEY MONUMENT RECORD

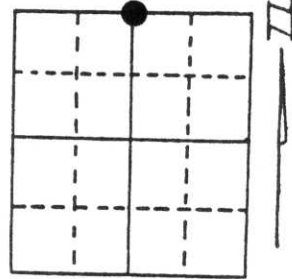
Note: This form is intended and designed to fulfill all requirements of Wisconsin Administrative Code, Chapter A-E 5.02, U.S. Public Land Survey Monument Record (3) (a) (b) (c) (d) (e) (f) (g) (h) (i). An additional sheet may be added if necessary to conform with said requirements.

(a) Corner location: Township 35 North

Range 7 East

Town/City/Village TOWN OF KING

County LINCOLN

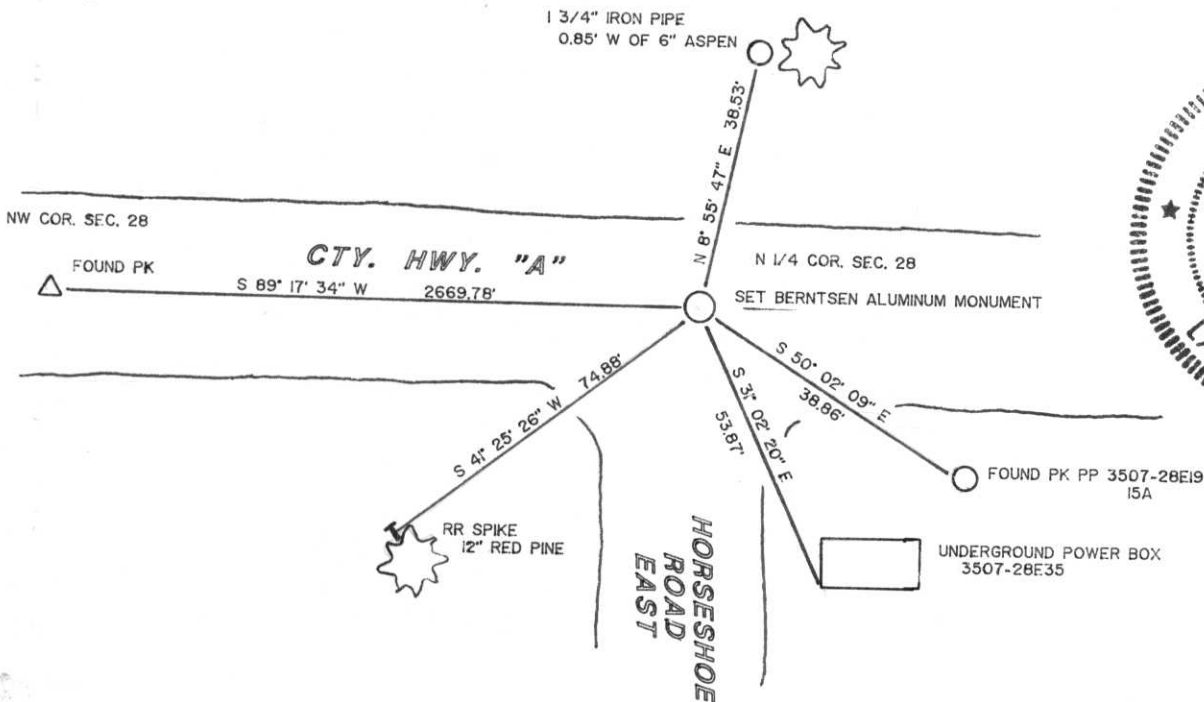


Section 28

(b) (f) (g) (h) Description of monument found at this corner and if it was accepted, state all evidence (material, testimonial, occupational, plats, records, other monuments) used as a basis for accepting. If not accepted or if nothing was found, state evidence used as basis for establishing location. If reestablished through lost corner proportionate methods, indicate all monuments, distances and directions used to establish.

CORNER WAS AN IRON PIPE IN THE CENTER OF HWY. "A". CORNER POSITION WAS LOST DUE TO HIGHWAY RE-CONSTRUCTION. CORNER WAS RESET BY RELATED CONTROL IN THE AREA.

(c) (d) (e) Plan view of corner with ties to at least 4 witness monuments. If in disagreement with previously established corner, show the distances between the two corners and also indicate the ties to the disputed corner.



(i) I, DAVID L. LEMKE
 (type or print name) certify that the corner location on this record was determined by me or under my direction and control and that this U.S. Public Land Survey Monument Record is correct and complete to the best of my knowledge and belief.

Signature

JUNE 28, 1994

Date

Boundary Hunter

P.O. BOX 442
 TOMAHAWK, WI 54487
 715/453-7035

Index No. Q-11



26 2:51 PM



26 2:57 PM



26 2:58 PM