

U.S. PUBLIC LAND SURVEY MONUMENT RECORD

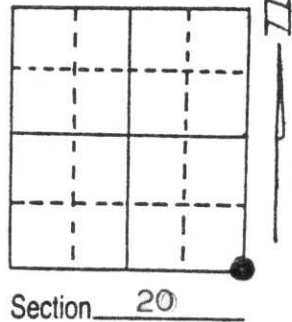
Note: This form is intended and designed to fulfill all requirements of Wisconsin Administrative Code, Chapter A-E 5.02, U.S. Public Land Survey Monument Record (3) (a) (b) (c) (d) (e) (f) (g) (h) (i). An additional sheet may be added if necessary to conform with said requirements.

(a) Corner location: Township 35 North

Range 7 East

Town/City/Village King

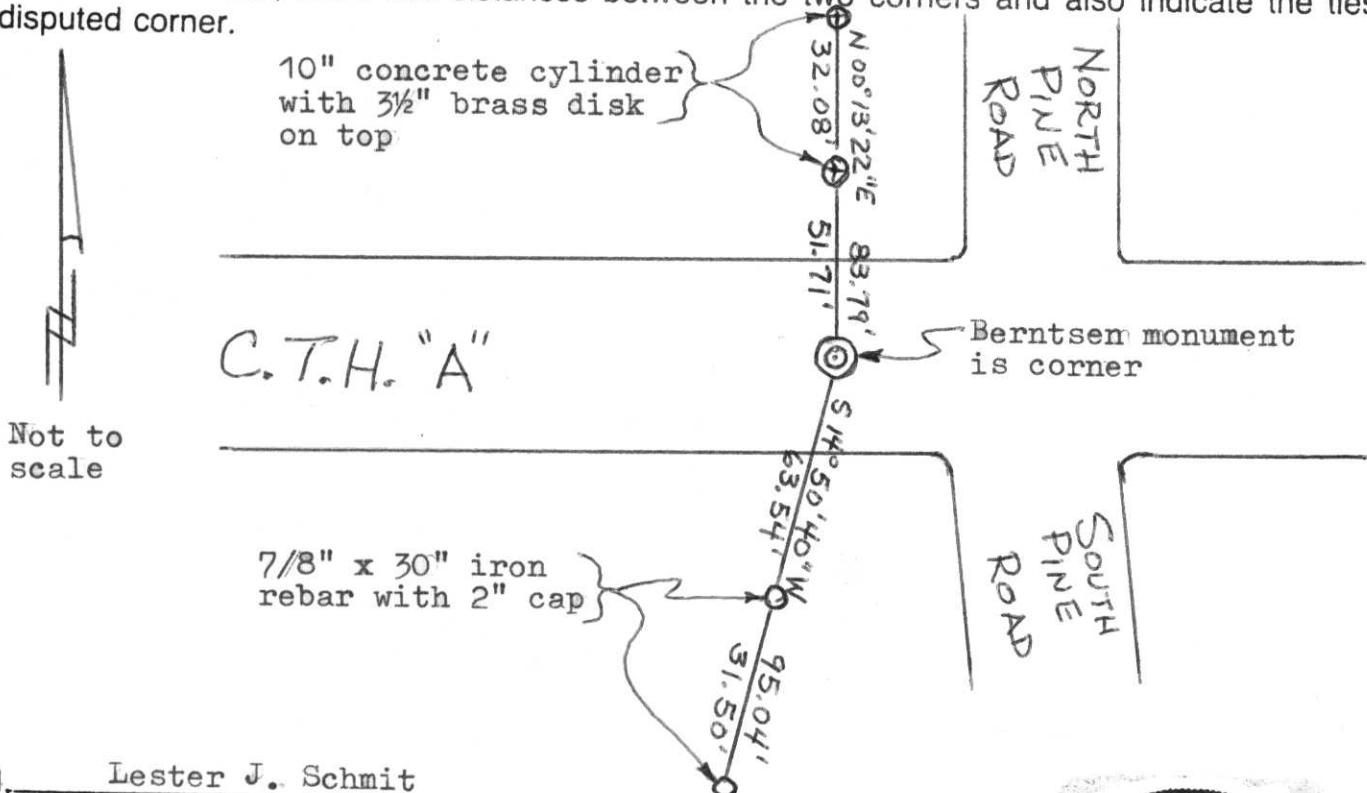
County Lincoln



(b) (f) (g) (h) Description of monument found at this corner and if it was accepted, state all evidence (material, testimonial, occupational, plats, records, other monuments) used as a basis for accepting. If not accepted or if nothing was found, state evidence used as basis for establishing location. If reestablished through lost corner proportionate methods, indicate all monuments, distances and directions used to establish. Original Gov't Survey: July 1861 by Alfred Millard, set wood post for corner with bearings, yellow pine 10 S 45° W 74 links & spruce pine 10 N 40° E 39 links. In October 1968, the Wisconsin Department of Transportation found a 1½" iron pipe for the corner. They established 2, 10" concrete cylinders with 3½" brass disks on top for witnesses as shown below. I found these witnesses & used them to replace the corner location which apparently was removed during the reconstruction of County Trunk Highway "A" shortly after the witnesses were set. I placed a Berntsen monument at this location for the corner & added witnesses as shown below.

RECEIVED AT LINCOLN COUNTY
COURTHOUSE THIS 4th DAY
OF Oct. 19 95
Pat Poole
TAX DESCRIPTION OFFICE

(c) (d) (e) Plan view of corner with ties to at least 4 witness monuments. If in disagreement with previously established corner, show the distances between the two corners and also indicate the ties to the disputed corner.



(i) I, Lester J. Schmit
(type or print name) certify that the corner location on this record was determined by me or under my direction and control and that this U.S. Public Land Survey Monument Record is correct and complete to the best of my knowledge and belief.

Lester J. Schmit 4 Oct 95
Signature Date



Index No. Q-9

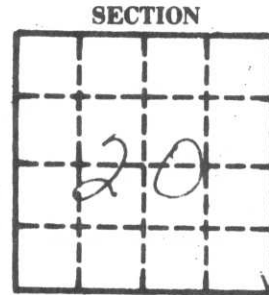
MINK CAPITAL SURVEYING, INC.
SURVEY MONUMENT LOCATION RECORD

SECTION 20
 TOWNSHIP 35 N
 RANGE 7E
LINCOLN
 [CITY, VILLAGE, COUNTY]

LANDMARK BENCHMARK

FOUND
 SET
 RE-SET
 RE-TIED

CORNER IDENTITY PK NAIL
 DATE OF SURVEY DEC. 6 1976
 WEATHER CLEAR + COLD
 TEMPERATURE 5°±
 SURVEY PARTY D. TLUSTY M. HENRICHS
F. STOLTENBERG



SECTION
 LOCATION
 [INDICATED BY X]

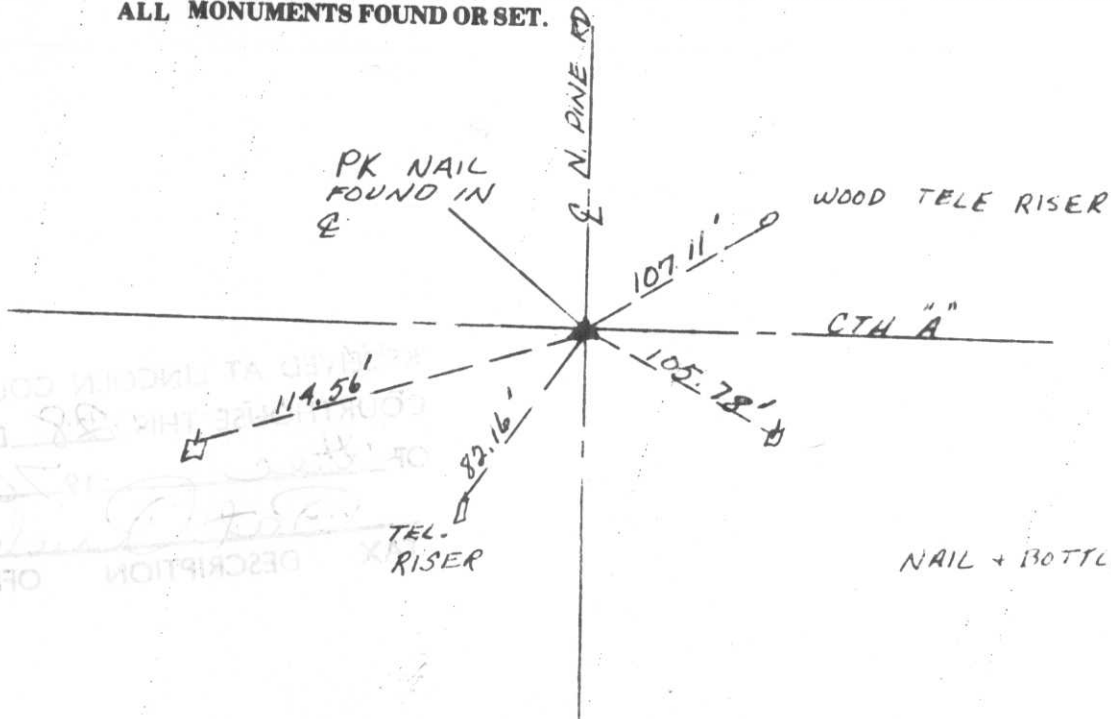


BASIS FOR MONUMENT LOCATION

DESCRIBE METHOD OF SURVEY AND CORNER AUTHENTICATION

TIE SKETCH

SHOW HORIZONTAL TIE DISTANCES TO FIXED WITNESS MONUMENTS. DESCRIBE ALL MONUMENTS FOUND OR SET.



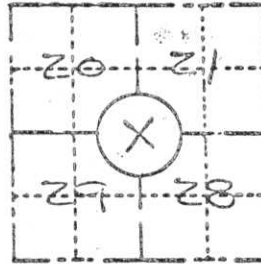
RECORDED AT LINCOLN COUNTY
 JAN 28 1977
 COUNTY CLERK
 OFFICE

NAIL + BOTTLE IN POLES

FIELD SURVEY NOTES
PRESERVATION OF LANDMARKS
(Pursuant to Section 59.635(7) Wisconsin Statutes)

State Highway Commission of Wisconsin
Form E-D-707-66

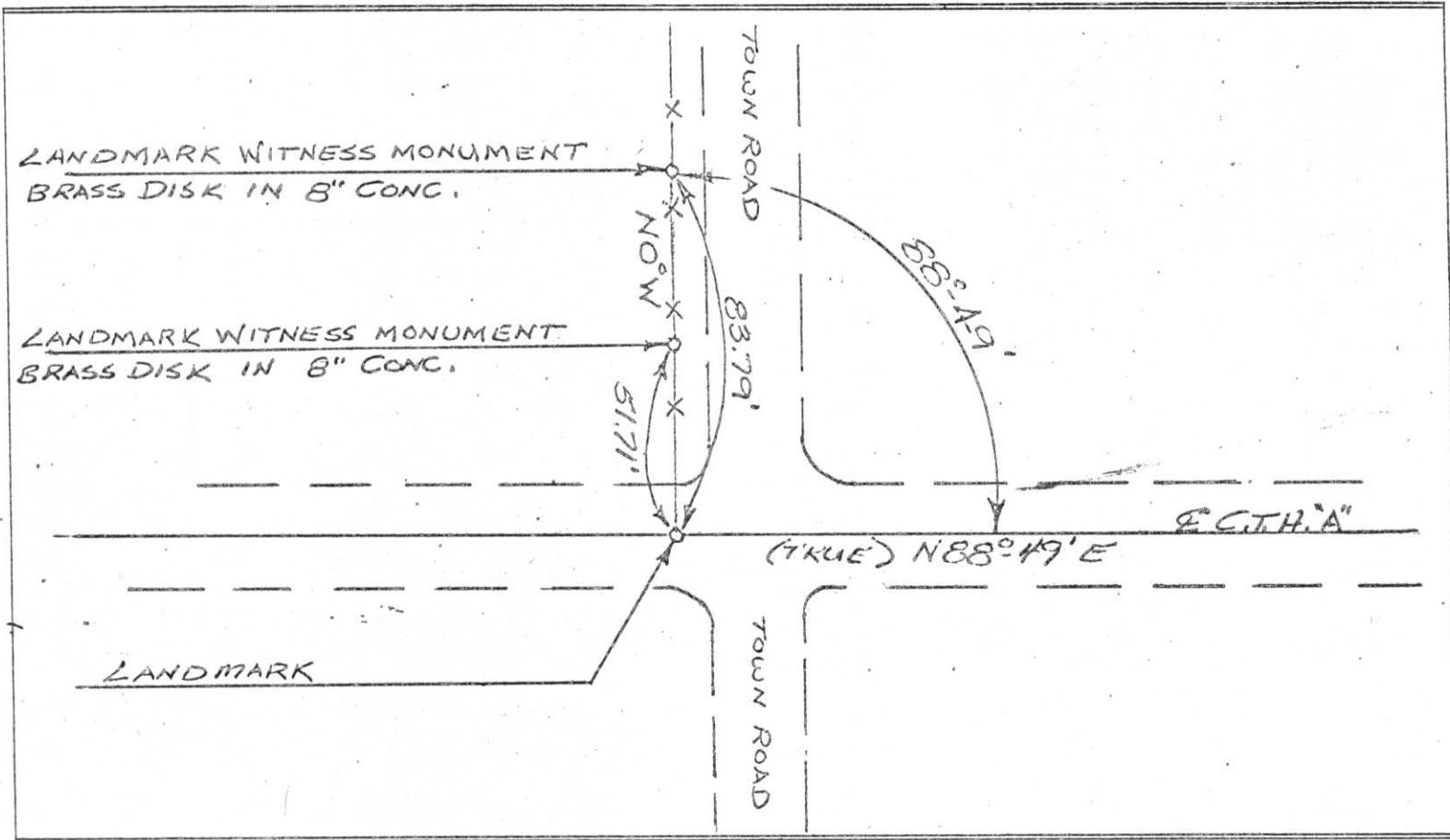
COUNTY <i>LINCOLN</i>		
TOWN <i>KING</i>		
HIGHWAY <i>C.T.H. "A"</i>		
SECTION <i>20, 21, 28 & 29</i>	TOWNSHIP <i>35N</i>	RANGE <i>7E</i>
TYPE OF LANDMARK <i>1 1/2" Iron Pipe</i>		



LOCATION SKETCH
(Location of landmark indicated by "x")



This space for copy of field notes or ties to the above described landmarks

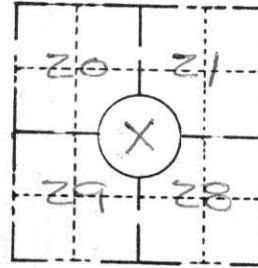


FILED UNDER PROJECT NUMBER <i>51180(A)</i>		
SHC DISTRICT OFFICE NUMBER <i>7</i>	CITY <i>Rhineland</i>	COUNTY <i>Oneida</i>
LOCATED OR ESTABLISHED BY NAME <i>W. H. C. C. C.</i> TITLE <i>Eng. Tech. IV</i> DATE <i>Oct 22 '13</i>		

COUNTY CLERK'S OFFICE COUNTY OF <i>Lincoln</i> WISCONSIN } 55	
DATE RECEIVED FOR RECORD <i>11/8/70</i>	DATE COPY SENT TO COUNTY SURVEYOR <i>NONE</i>
SIGNATURE OF COUNTY CLERK <i>Ken Aldenberg</i>	

69

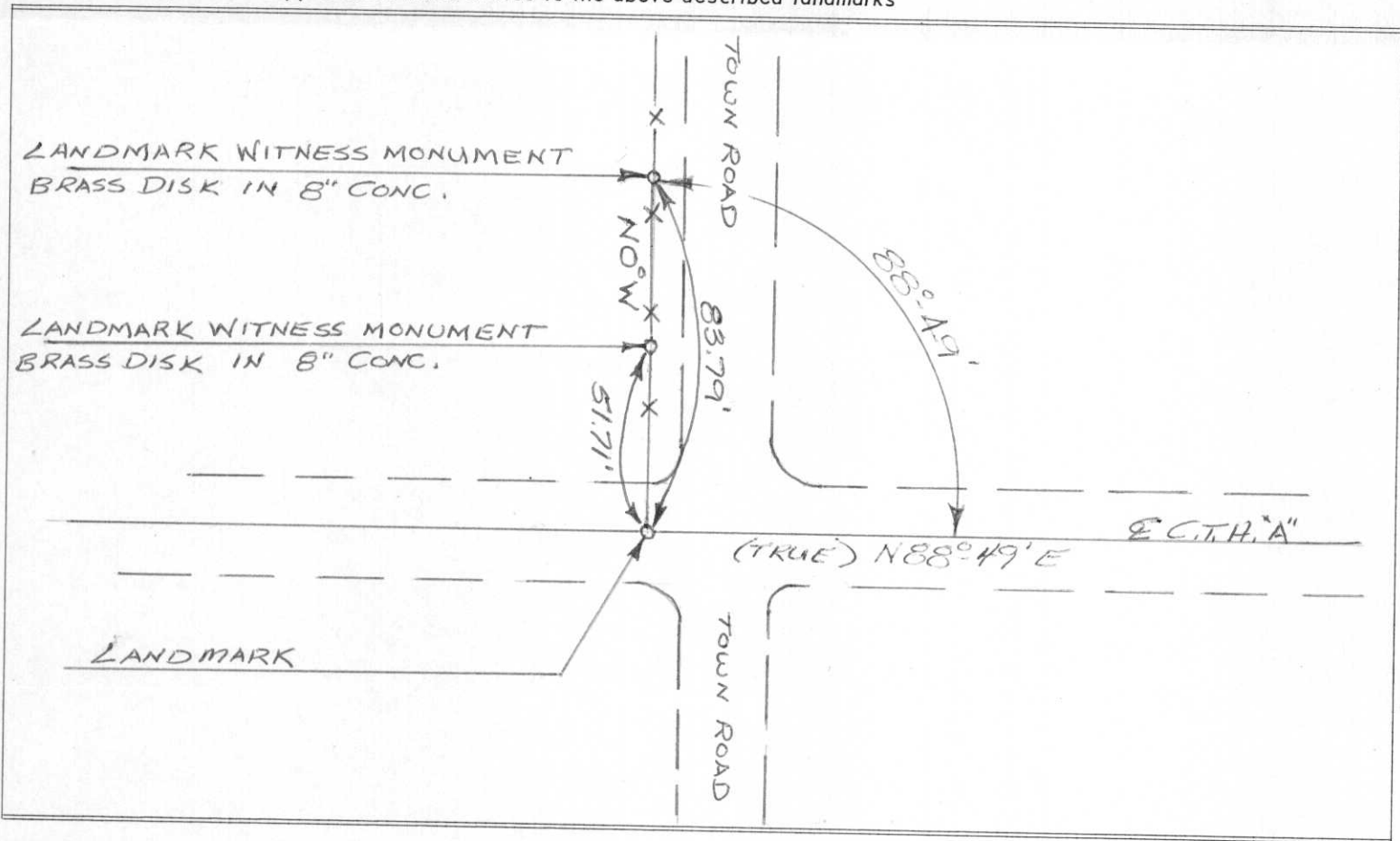
COUNTY <i>LINCOLN</i>		
TOWN <i>KING</i>		
HIGHWAY <i>C.T.H. "A"</i>		
SECTION <i>20, 21, 28 & 29</i>	TOWNSHIP <i>35N</i>	RANGE <i>7E</i>
TYPE OF LANDMARK <i>1 1/2" Iron Pipe</i>		



LOCATION SKETCH
 (Location of landmark indicated by "x")



This space for copy of field notes or ties to the above described landmarks



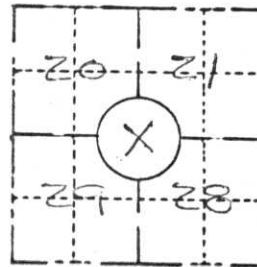
FILED UNDER PROJECT NUMBER <i>51180(4)</i>		
SHC DISTRICT OFFICE NUMBER <i>7</i>	CITY <i>Rhinelander</i>	COUNTY <i>Oneida</i>
LOCATED OR ESTABLISHED BY NAME <i>William J. Cairns</i> TITLE <i>Engr. Tech. IV</i> DATE <i>Oct 22 '68</i>		

COUNTY CLERK'S OFFICE COUNTY OF <i>WISCONSIN</i> } ss	
DATE RECEIVED FOR RECORD	DATE COPY SENT TO COUNTY SURVEYOR
SIGNATURE OF COUNTY CLERK	

PRESERVATION OF LANDMARKS

(Pursuant to Section 59.635(7) Wisconsin Statutes)

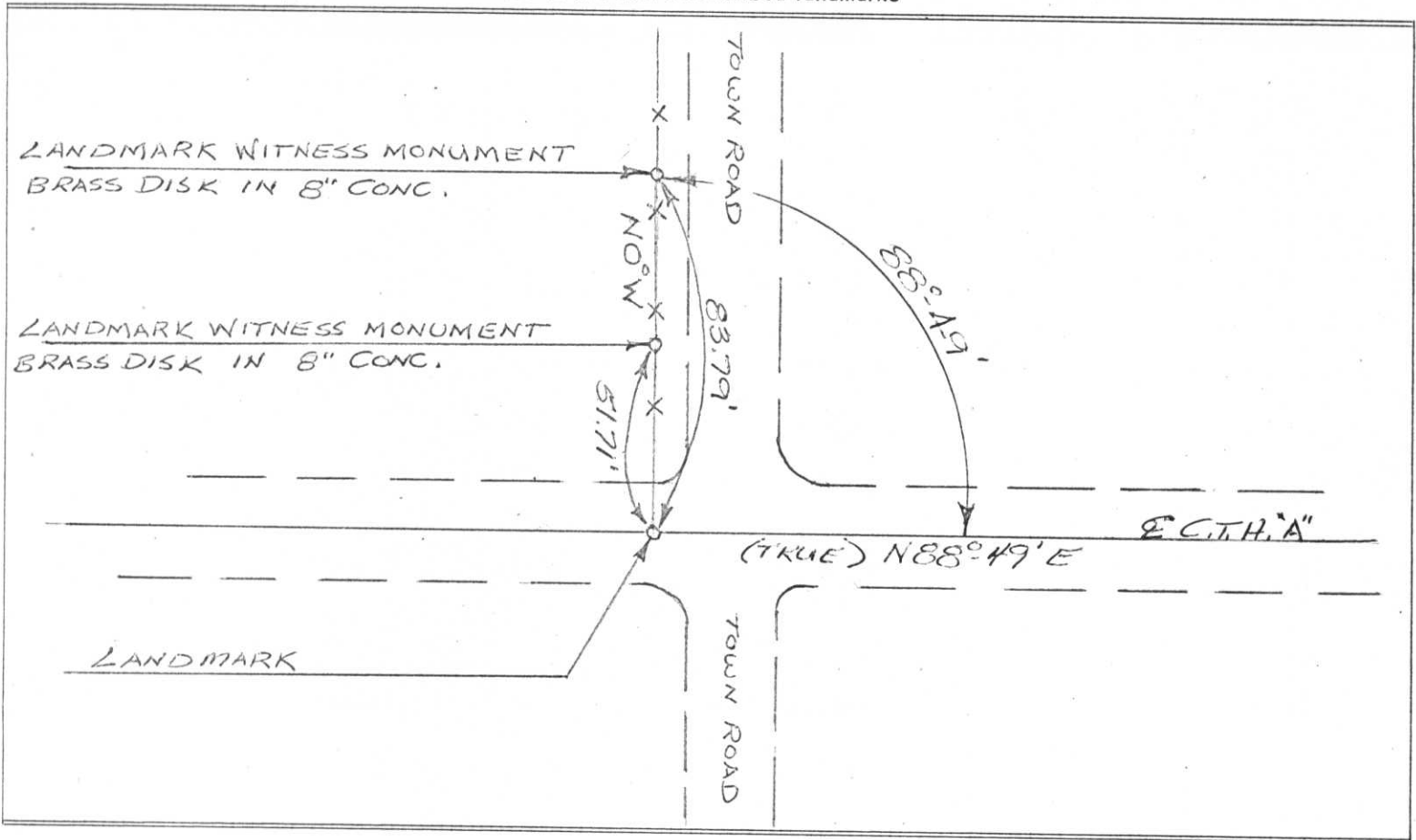
COUNTY <i>LINCOLN</i>		
TOWN <i>KING</i>		
HIGHWAY <i>C.T.H. "A"</i>		
SECTION <i>20, 21, 28 & 29</i>	TOWNSHIP <i>35N</i>	RANGE <i>7E</i>
TYPE OF LANDMARK <i>1 1/2" Iron Pipe</i>		



LOCATION SKETCH
(Location of landmark indicated by "x")



This space for copy of field notes or ties to the above described landmarks



FILED UNDER PROJECT NUMBER <i>51180(A)</i>			COUNTY CLERK'S OFFICE		
SHC DISTRICT OFFICE NUMBER <i>7</i>		CITY <i>Rhineland</i>	COUNTY <i>Oneida</i>	COUNTY OF	WISCONSIN } ss
LOCATED OR ESTABLISHED BY			DATE RECEIVED FOR RECORD	DATE COPY SENT TO COUNTY SURVEYOR	
NAME <i>William J. Cairns Jr.</i>			SIGNATURE OF COUNTY CLERK		
TITLE <i>Eng. Tech. IV</i> DATE <i>Oct 22 '13</i>					



31 2:57 PM



31 2:57 PM



31 3:00 PM



31 3:01 PM