

# U.S. PUBLIC LAND SURVEY MONUMENT RECORD

Note: This form is intended and designed to fulfill all requirements of Wisconsin Administrative Code, Chapter A-E 5.02, U.S. Public Land Survey Monument Record (3) (a) (b) (c) (d) (e) (f) (g) (h) (i). An additional sheet may be added if necessary to conform with said requirements.

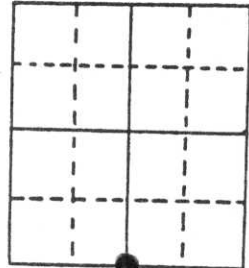
(a) Corner location: Township 35 North

Range 7 East

Town/City/Village King

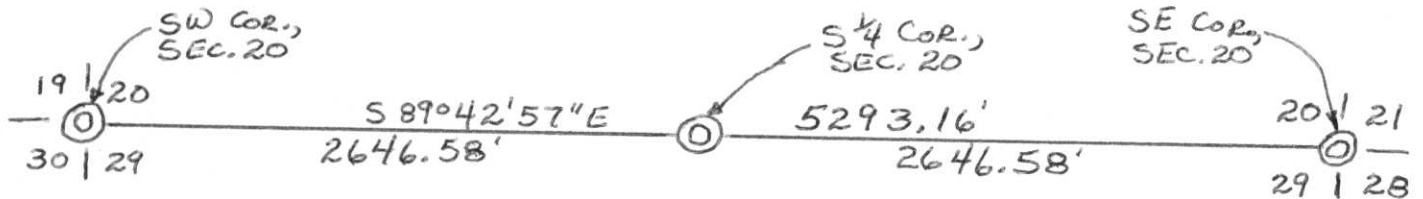
County Lincoln

RECEIVED AT LINCOLN COUNTY  
COURTHOUSE THIS 4th DAY  
OF Oct 19 95  
Pat Pribe  
TAX DESCRIPTION OFFICE

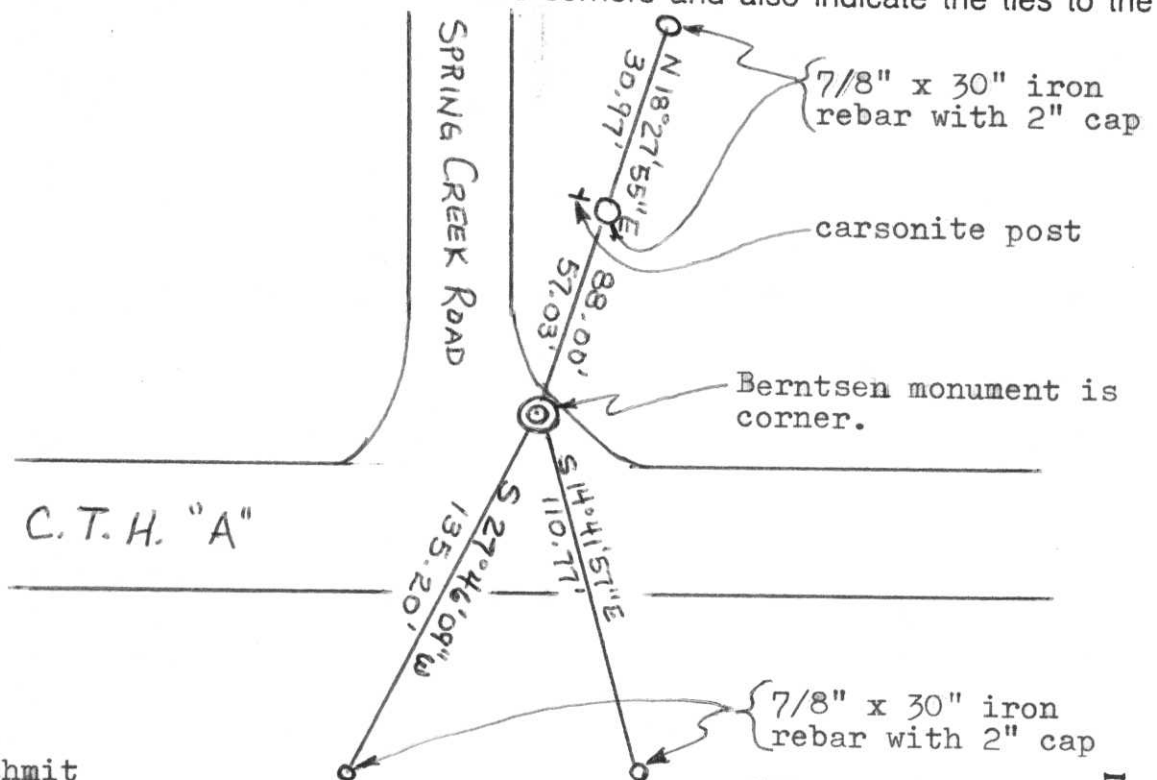


Section 20

(b) (f) (g) (h) Description of monument found at this corner and if it was accepted, state all evidence (material, testimonial, occupational, plats, records, other monuments) used as a basis for accepting. If not accepted or if nothing was found, state evidence used as basis for establishing location. If reestablished through lost corner proportionate methods, indicate all monuments, distances and directions used to establish. Original Gov't. Survey: July 1861 by Alfred Millard, set wood post for corner with bearings, spruce pine 6 S 35° W 36 links & spruce pine 5 N 33° E 22 links. I found no evidence of the corner. During the reconstruction of County Trunk Highway "A" & Spring Creek Road the area had an extensive cut which would have removed any evidence. I reestablished the corner location by a single proportionate measurement between the Southwest & Southeast corners of Section 20. I set a Berntsen monument for the corner & witnessed it as shown below.



(c) (d) (e) Plan view of corner with ties to at least 4 witness monuments. If in disagreement with previously established corner, show the distances between the two corners and also indicate the ties to the disputed corner.



(i) I, Lester J. Schmit

(type or print name) certify that the corner location on this record was determined by me or under my direction and control and that this U.S. Public Land Survey Monument Record is correct and complete to the best of my knowledge and belief.

Lester J. Schmit  
Signature

4 Oct 95  
Date



Index No. Q-7

**MINK CAPITAL SURVEYING, INC.**  
**SURVEY MONUMENT LOCATION RECORD**

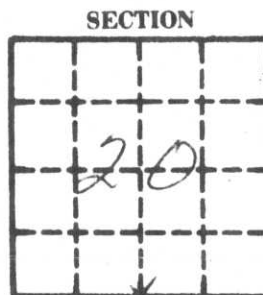
SECTION 20  
 TOWNSHIP 35  
 RANGE 7E  
LINCOLN  
 (CITY, VILLAGE, COUNTY)



LANDMARK     BENCHMARK

FOUND   
 SET   
 RE-SET   
 RE-TIED

CORNER IDENTITY NAIL + BOTTLE CAP  
 DATE OF SURVEY DEC. 6 1976  
 WEATHER CLEAR + COLD  
 TEMPERATURE 50±  
 SURVEY PARTY D. TLUSTV M. HENRICHS  
F. STÖJENBERG



SECTION  
 LOCATION  
 [INDICATED BY X]

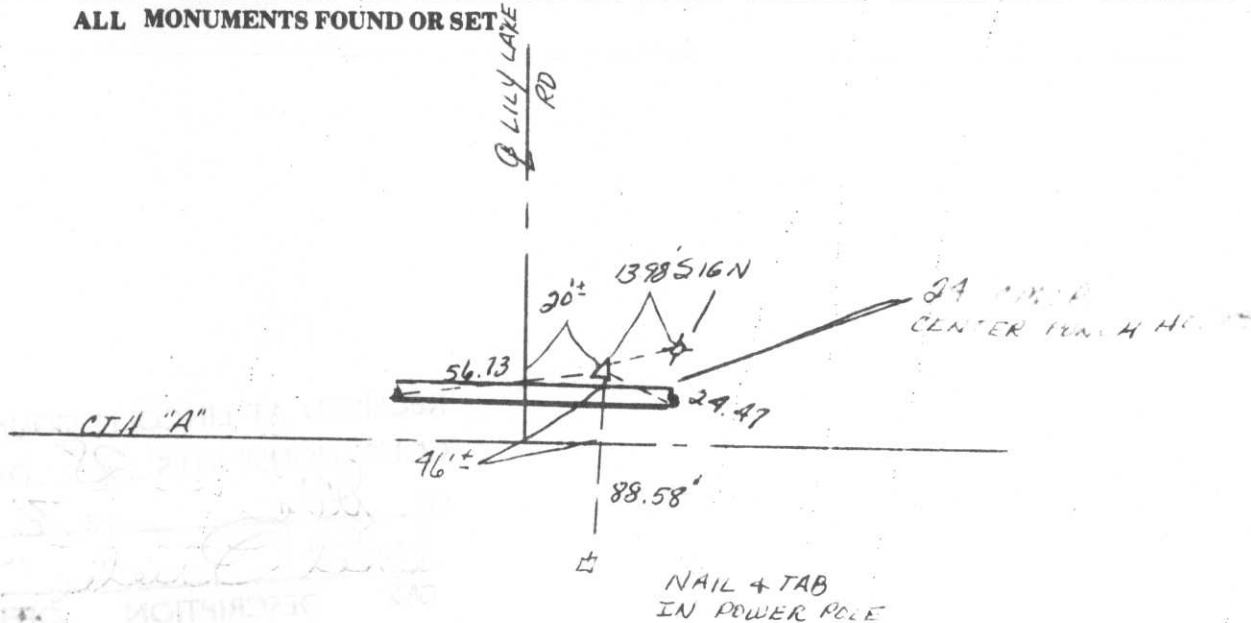
**BASIS FOR MONUMENT LOCATION**

DESCRIBE METHOD OF SURVEY AND CORNER AUTHENTICATION

SET HALFWAY BETWEEN SW COR 20 & SE COR 20  
 SEE ERICKSON SURVEY

**TIE SKETCH**

SHOW HORIZONTAL TIE DISTANCES TO FIXED WITNESS MONUMENTS. DESCRIBE ALL MONUMENTS FOUND OR SET





31 2:32 PM



31 2:32 PM



31 2:38 PM