

U.S. PUBLIC LAND SURVEY MONUMENT RECORD

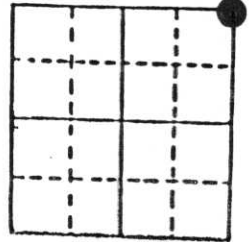
Note: This form is intended and designed to fulfill all requirements of Wisconsin Administrative Code, Chapter A-E 5.02, U.S. Public Land Survey Monument Record (3) (a) (b) (c) (d) (e) (f) (g) (h) (i). An additional sheet may be added if necessary to conform with said requirements.

(a) Corner location: Township 35 North

Range 7 East

Town King

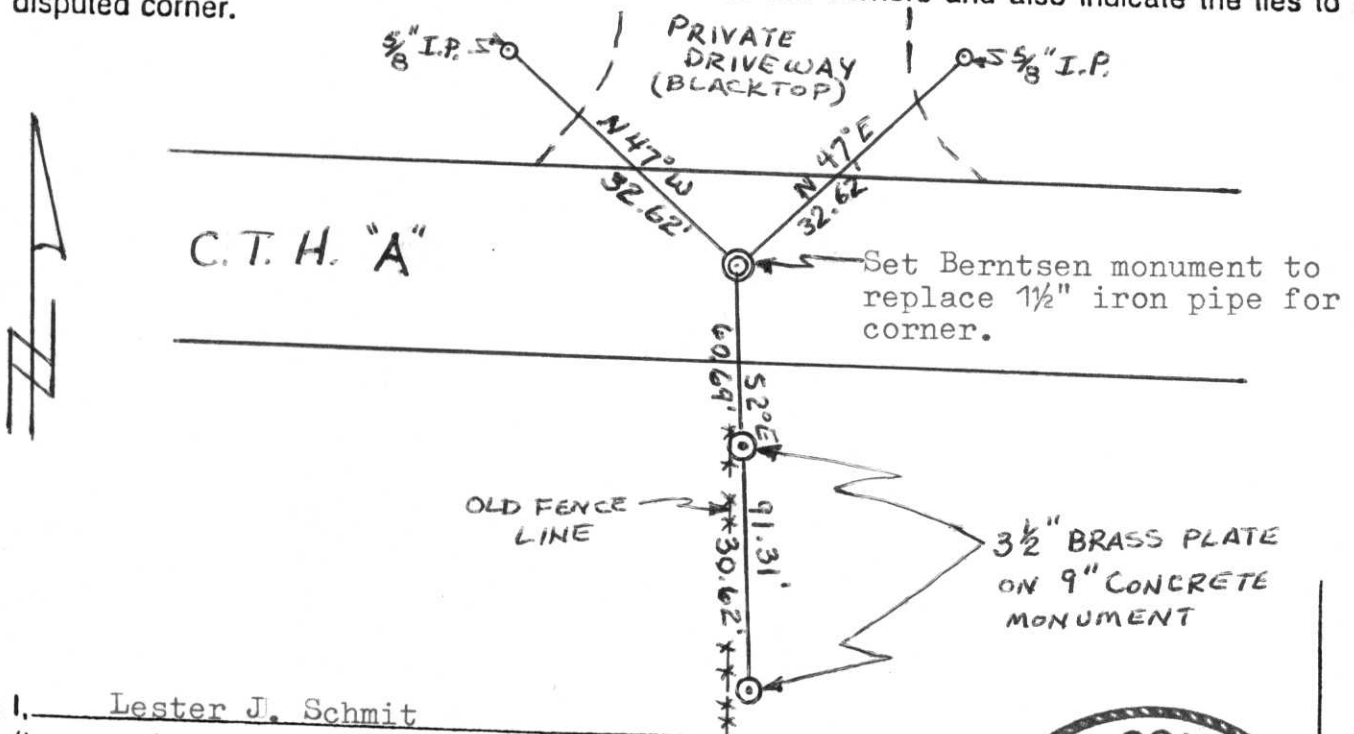
County Lincoln



Section 30

b) (f) (g) (h) Description of monument found at this corner and if it was accepted, state all evidence (material, testimonial, occupational, plats, records, other monuments) used as a basis for accepting. If not accepted or if nothing was found, state evidence used as basis for establishing location. If reestablished through lost corner proportionate methods, indicate all monuments, distances and directions used to establish. Original Gov't. Survey: June 1861 by Alfred Millard, set wood post for corner with bearings, pine 10 N 25° E 5 links & spruce pine 9 S 20° W 5 links. A 1½" iron pipe was set for the corner from the 2 D.O.T. concrete monuments to the south established during work in 1968. I replaced the 1½" iron pipe with a Berntsen monument for the corner and set new witness pipes.

c) (d) (e) Plan view of corner with ties to at least 4 witness monuments. If in disagreement with previously established corner, show the distances between the two corners and also indicate the ties to the disputed corner.



(i) I, Lester J. Schmit
 (type or print name) certify that the corner location on this record was determined by me or under my direction and control and that this U.S. Public Land Survey Monument Record is correct and complete to the best of my knowledge and belief.

Lester J. Schmit
 Signature

11 Sep 89
 Date



Index No. Q-5

MINK CAPITAL SURVEYING, INC.
SURVEY MONUMENT LOCATION RECORD

LANDMARK BENCHMARK

FOUND
 SET
 RE-SET
 RE-TIED

SECTION 19
 TOWNSHIP 35
 RANGE 7E
LINCOLN
 [CITY, VILLAGE, COUNTY]

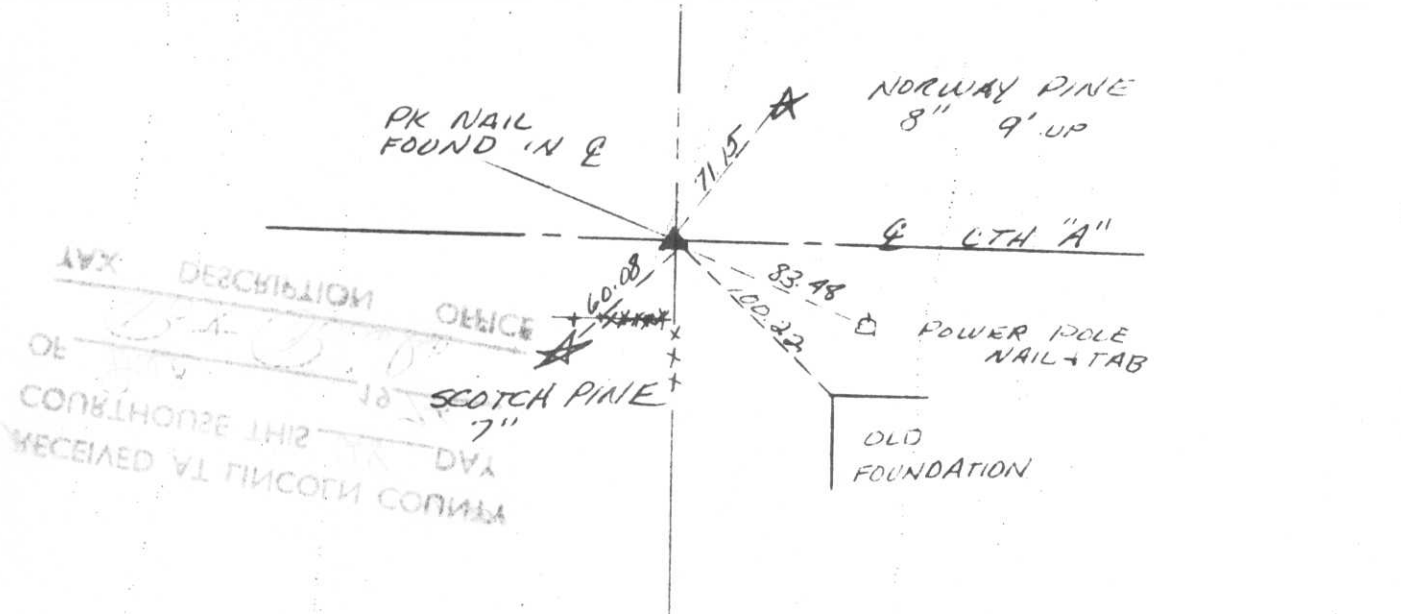


CORNER IDENTITY PK NAIL
 DATE OF SURVEY DEC. 6 1976
 WEATHER CLEAR & COLD
 TEMPERATURE 5°
 SURVEY PARTY D. TUSTY M. HENRICHAS
F. STOLTENBERG



BASIS FOR MONUMENT LOCATION
 DESCRIBE METHOD OF SURVEY AND CORNER AUTHENTICATION

TIE SKETCH SHOW HORIZONTAL TIE DISTANCES TO FIXED WITNESS MONUMENTS. DESCRIBE ALL MONUMENTS FOUND OR SET.

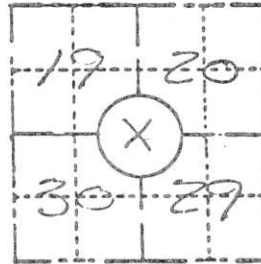


Q-5

PRESERVATION OF LANDMARKS

(Pursuant to Section 59.635(7) Wisconsin Statutes)

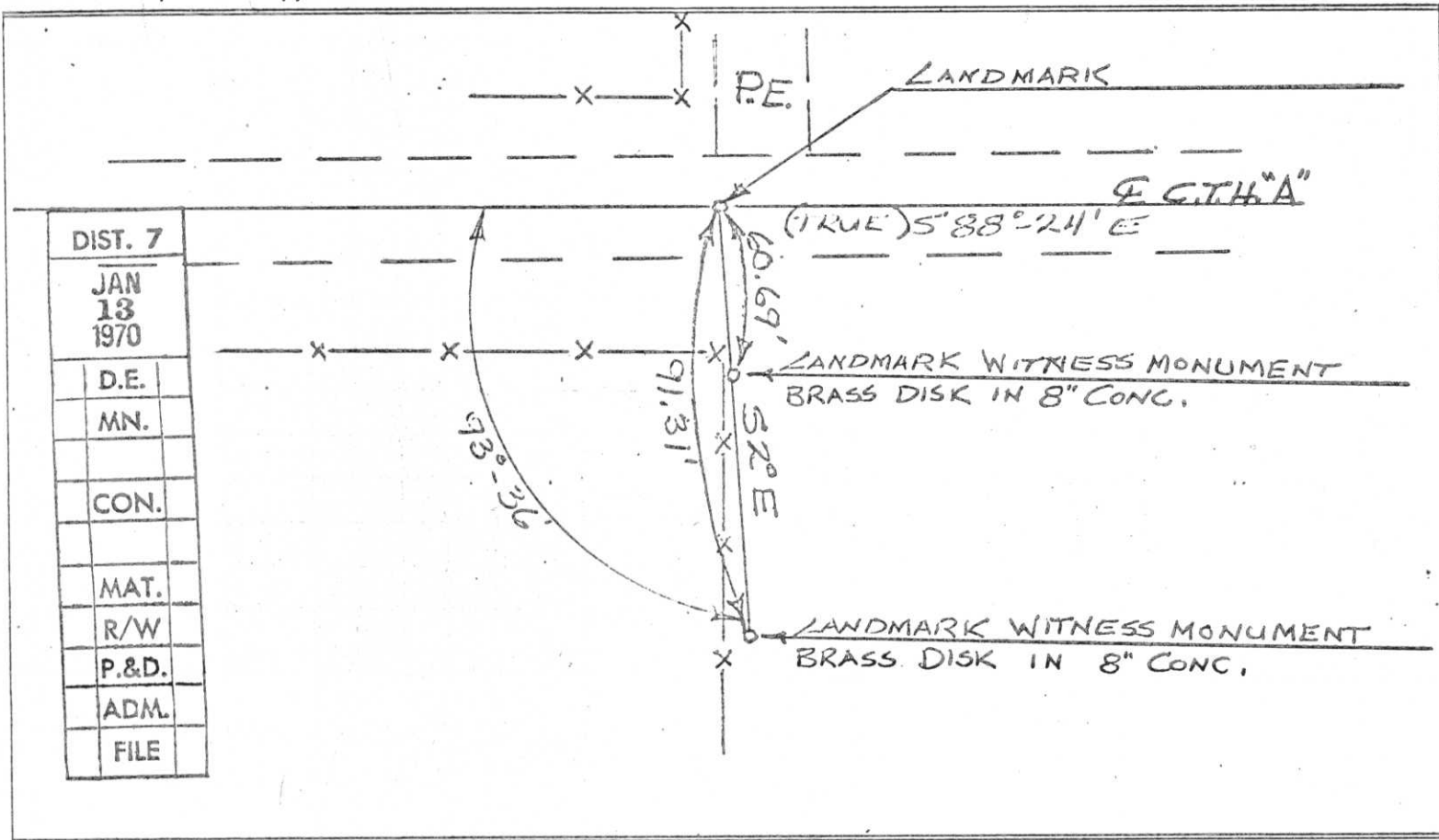
COUNTY <i>Lincoln</i>		
TOWN <i>KING</i>		
HIGHWAY <i>C.T.H. "A"</i>		
SECTION <i>19, 20, 29 & 30</i>	TOWNSHIP <i>35 N</i>	RANGE <i>7 E</i>
TYPE OF LANDMARK <i>1/2" Iron Pipe</i>		



LOCATION SKETCH
(Location of landmark indicated by "x")



This space for copy of field notes or ties to the above described landmarks



DIST. 7
JAN 13 1970
D.E.
MN.
CON.
MAT.
R/W
P.&D.
ADM.
FILE

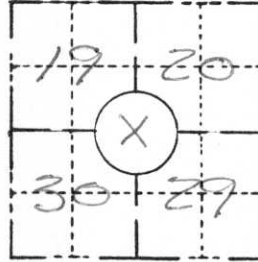
FILED UNDER PROJECT NUMBER <i>51180 (A)</i>		
SHC DISTRICT OFFICE NUMBER <i>7</i>	CITY <i>Rhineland</i>	COUNTY <i>Oneida</i>
LOCATED OR ESTABLISHED BY NAME <i>William J. Campbell</i>		
TITLE <i>Engin. Tech. TV</i>		DATE <i>Oct 22, '68</i>

COUNTY CLERK'S OFFICE	
COUNTY OF <i>Lincoln</i>	WISCONSIN } 35
DATE RECEIVED FOR RECORD <i>1/8/70</i>	DATE COPY SENT TO COUNTY SURVEYOR <i>NONE</i>
SIGNATURE OF COUNTY CLERK <i>Ken Alderby</i>	

FIELD SURVEY
PRESERVATION

(Pursuant to Section 59.635(7) Wisconsin Statutes)

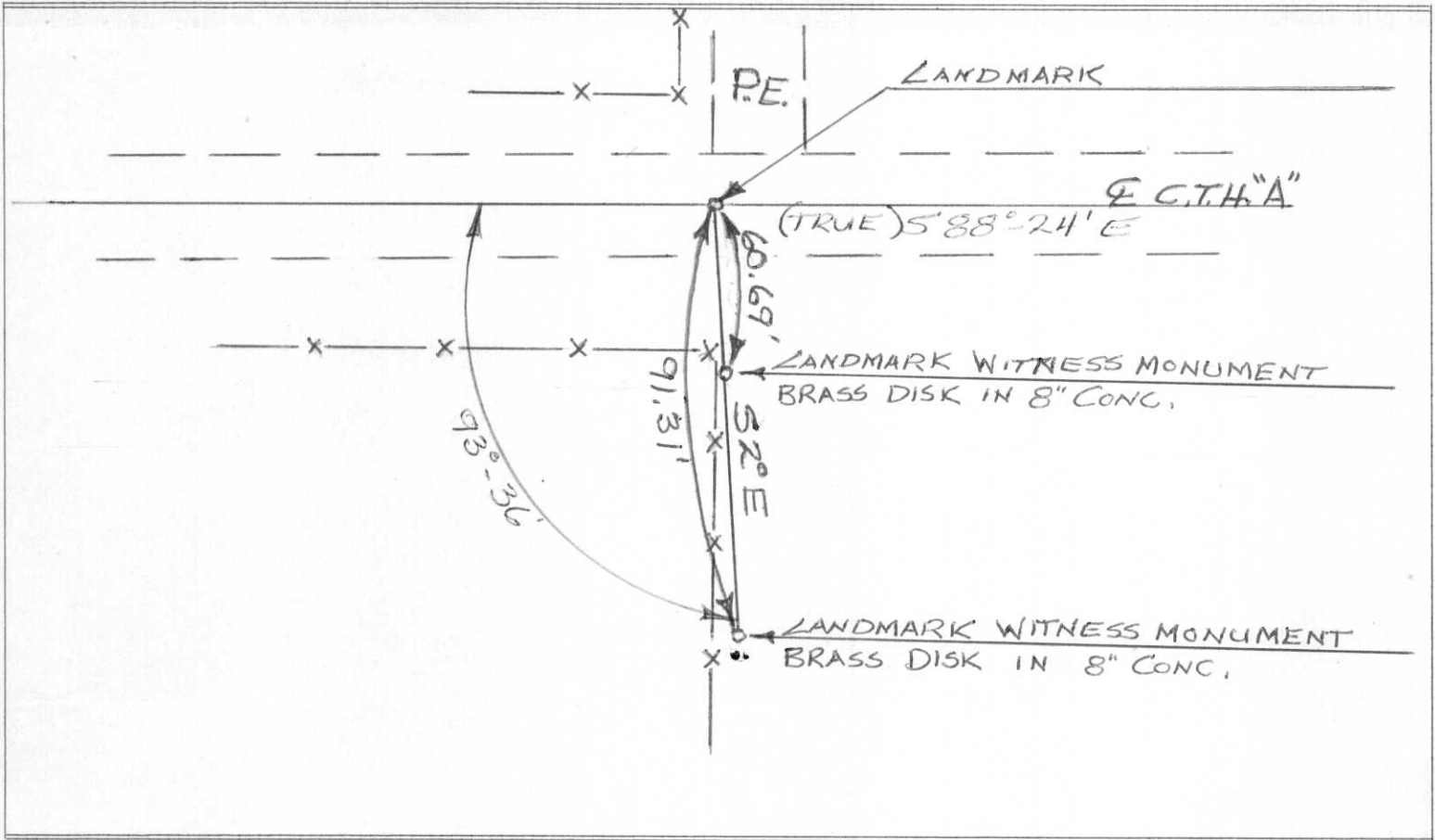
COUNTY <i>Lincoln</i>		
TOWN <i>KING</i>		
HIGHWAY <i>C.T.H. "A"</i>		
SECTION <i>19, 20, 29 & 30</i>	TOWNSHIP <i>35 N</i>	RANGE <i>7 E</i>
TYPE OF LANDMARK <i>1 1/2" Iron Pipe</i>		



LOCATION SKETCH
(Location of landmark indicated by "x")



This space for copy of field notes or ties to the above described landmarks



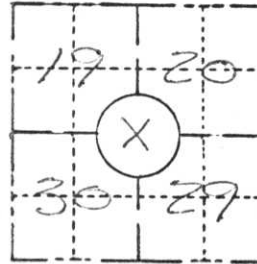
FILED UNDER PROJECT NUMBER <i>51180 (A)</i>		
SHC DISTRICT OFFICE NUMBER <i>7</i>	CITY <i>Rhineland</i>	COUNTY <i>Oneida</i>
LOCATED OR ESTABLISHED BY NAME <i>Wilbur J. Camp Jr.</i> TITLE <i>Engr. Tech. TV</i> DATE <i>Oct 22, '68</i>		

COUNTY CLERK'S OFFICE COUNTY OF <i>Lincoln</i> WISCONSIN } ss	
DATE RECEIVED FOR RECORD <i>1/8/70</i>	DATE COPY SENT TO COUNTY SURVEYOR <i>NONE</i>
SIGNATURE OF COUNTY CLERK <i>Ken Oldenburg</i>	

PRESERVATION OF LANDMARKS

(Pursuant to Section 59.635(7) Wisconsin Statutes)

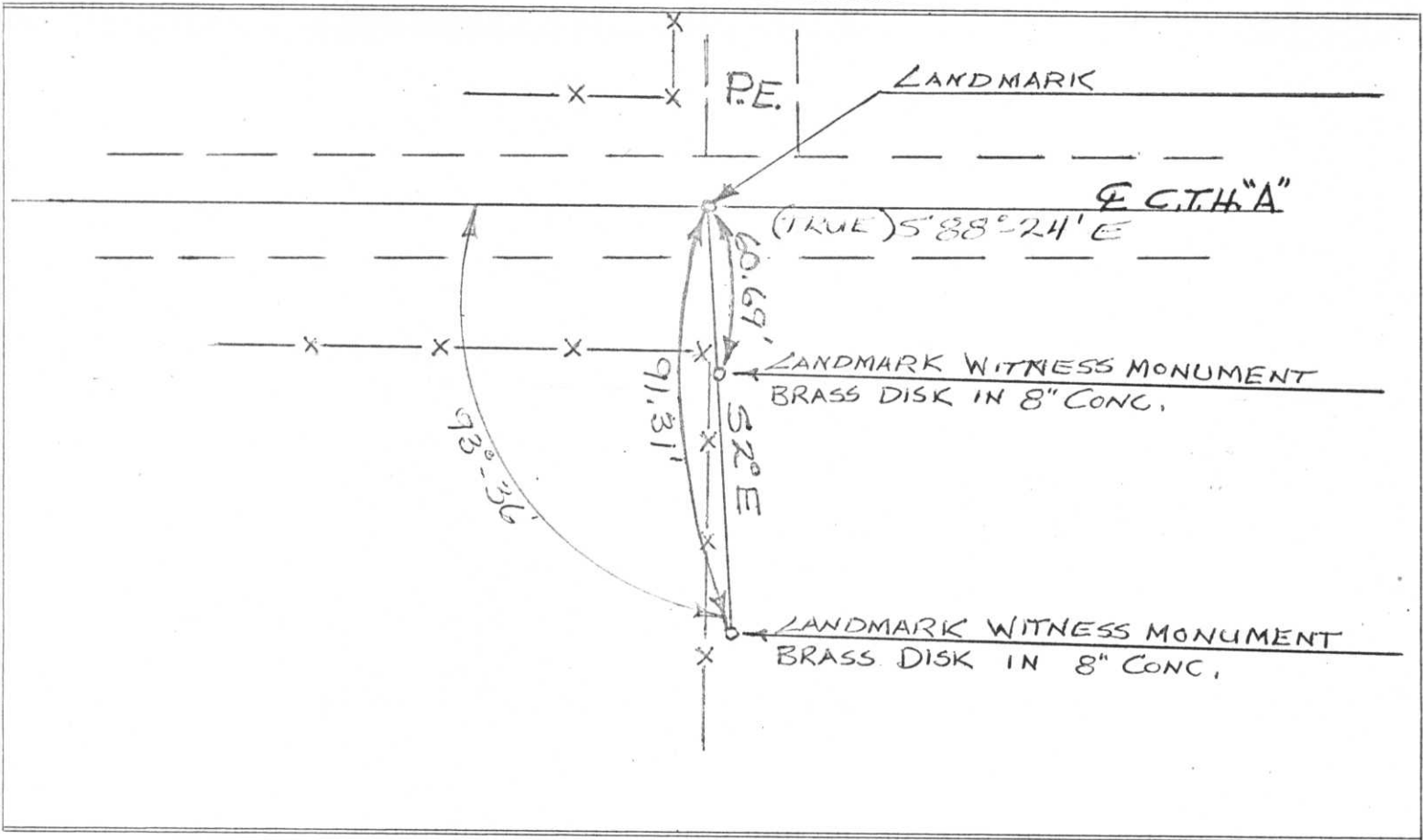
COUNTY <i>Lincoln</i>		
TOWN <i>KING</i>		
HIGHWAY <i>C.T.H. "A"</i>		
SECTION <i>19, 20, 29, 30</i>	TOWNSHIP <i>35 N</i>	RANGE <i>7 E</i>
TYPE OF LANDMARK <i>1/2" Iron Pipe</i>		



LOCATION SKETCH
(Location of landmark indicated by "x")



This space for copy of field notes or ties to the above described landmarks



FILED UNDER PROJECT NUMBER <i>511E0 (4)</i>			COUNTY CLERK'S OFFICE		
SHC DISTRICT OFFICE NUMBER <i>7</i>		CITY <i>Rhineland</i>	COUNTY <i>Oneida</i>	COUNTY OF	WISCONSIN } 55
LOCATED OR ESTABLISHED BY			DATE RECEIVED FOR RECORD	DATE COPY SENT TO COUNTY SURVEYOR	
NAME <i>W. J. Campbell</i>			SIGNATURE OF COUNTY CLERK		
TITLE <i>Eng. Tech. TV</i>			DATE <i>Oct 22, '68</i>		

Q-5