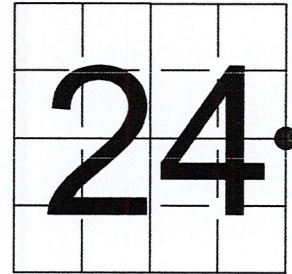


# U S PUBLIC LAND SURVEY MONUMENT RECORD

NOTE: This form is intended and designed to fulfill all requirements of Wisconsin Administrative Code, Chapter A-E 7.08 U.S. Public Land Survey Monument Record (3) (a-i)

A-E 7.08(3)(a) Identity of corner:  
 EAST 1/4 CORNER SECTION 24,  
 TOWNSHIP 35 NORTH,  
 RANGE 07 EAST OF THE 4TH PM,  
 TOWN OF KING,  
 COUNTY OF LINCOLN

WISCRS - LINCOLN COUNTY  
 N: 239,855.358 USft (239,855.187)  
 E: 428,398.307 USft (428,398.232)  
 Datum: NAD83 (2011)  
 GNSS Method RTN - Direct  
 GNSS Control WISCRS VRS



The coordinate value shown has been verified by the average of two or more GPS observations at a markedly different time. Coordinates shown in parenthesis are provided by Lincoln County.

A-E 7.08(3)(b)

Original Surveyor: Alfred Millard

Date of Original Survey	Commenced:	August 1860	Original Accessories:		
	Completed:	September 1860	W. Birch	6	S 58° E 18 Links
			W. Birch	8	N 5° W 11 Links

1937 - Surveyor Francis Fuchs (aka Francis Fox) - indicates this position by a symbol (no description) on Lincoln County map L280A & L280B.

February 9, 2004 Surveyor 2343 - Kevin P. Bixby - indicates this position as "found granite monument" on Lincoln County map L374B.

June 30, 2006 Surveyor 2343 - Kevin P. Bixby - indicates this position as "found granite monument" on Lincoln County map L424B.

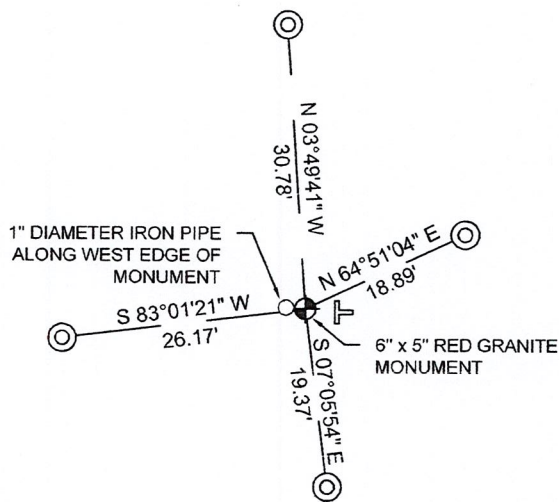
May 3, 2011 Surveyor 2343 - Kevin P. Bixby - indicates this position as "existing granite monument" on Lincoln County map L374B.

May 6, 2015 - Surveyor 2405 - Anthony R. Dallman - indicates this position as "6" x 6" granite stone monument, found in place" on Lincoln County map S534B.

September 15, 2022 - While performing the 2022 Lincoln County PLSS Corner Remonumentation and GPS Services project, I found a 6" x 5" red granite stone near the computed position provided by Lincoln County. The monument extends ±12" above ground. I established 4 new reference monuments as shown below.

A-E 7.08(3)(c)(d) Plan view of corner with references to at least 4 witness monuments.

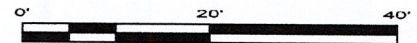
BEARINGS LISTED TO THE NEAREST SECOND ARE REFERENCED TO WISCONSIN COUNTY COORDINATE REFERENCE SYSTEM - LINCOLN COUNTY ZONE. ALL OTHER BEARINGS ARE MAGNETIC



RECEIVED BY LINCOLN COUNTY  
 SURVEYOR THIS 27<sup>TH</sup> DAY  
 OF December 20 22  
*Jeffrey DeMuth*  
 COUNTY SURVEYOR

## LEGEND

- 6" x 5" red granite monument, found
- 7/8" diameter X 30" long - iron rod with 2" diameter aluminum cap, set
- Vinyl T-post, set ±1 foot east of corner



A-E 7.08(3)(e) 1860 Surveyor set a post, 1937 Surveyor set a granite stone, 2004 - 2015 Surveyors find a granite stone. I found a 6" X 5" red granite stone.

A-E 7.08(3)(f) I accept this monument as a FOUND PERPETUATED LOCATION of the corner.

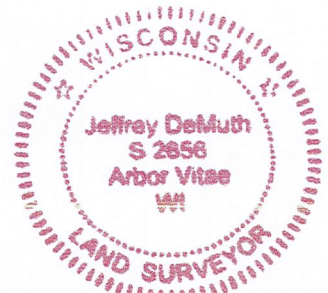
A-E 7.08(3)(g)(h) This corner was not determined through lost-corner-proportionate methods.

A-E 7.08(3)(i) I, Jeffrey L. DeMuth, Professional Land Surveyor No. S-2656, hereby certify that the corner location on this record was determined by the Lincoln County Surveyor, and the monuments found or set as shown hereon were measured by me or under my direction and control, and that this U.S. Public Land Survey Monument Record is correct and complete to the best of my knowledge, and belief.

SIGNATURE

December 14, 2022

DATE



0-25

## REPORT

### 2022-Lincoln County PLSS Corner Remonumentation and GPS Services

Wisconsin Corner Point Identification Number: 43507242000

Surveyor: Jeffrey L. DeMuth – S2656

Corner monument: Found 6"x 5" red granite stone.

Field Book: Cardinal North – Lincoln Co. Remon. – 2022-00

Page: 44

Horizontal Datum: WisCRS – Lincoln County Zone – NAD83(2011)

Date / time of initial measurement:

September 15, 2022 - Start 13:54:45 CDT – End 14:22:46 CDT

Reference monuments:

4 – Set - 7/8" diameter X 30" long iron rods with 2" diameter Lincoln Co. aluminum cap.

1 – Found – 1" diameter iron pipe by others.

#### Coordinate Table

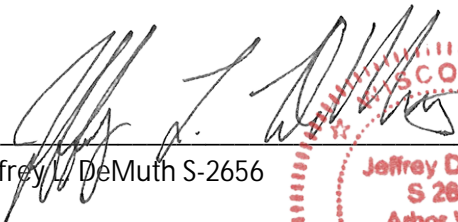
	County Provided	2022 Measurement	Difference
North	239855.187	239855.358	-0.17
East	428398.232	428398.307	-0.07

Observed coordinates match with existing coordinates within reason.


Request Data Log for more information.

Additional Notes:

Corner extends  $\pm 1$  foot above grade and has a 1" diameter iron pipe along the west edge.

  
Jeffrey L. DeMuth S-2656

October 7, 2022  
Date



43507242000\_Mon-N



43507242000\_North



43507242000\_West



43507242000\_South



43507242000\_East

