

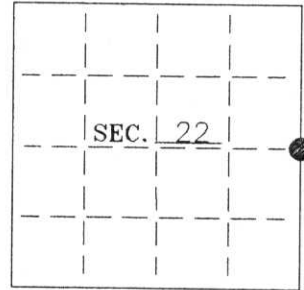
# U. S. PUBLIC LAND SURVEY MONUMENT RECORD

Note: This form is intended and designed to fulfill all requirements of Wisconsin Administrative Code-Chapter A-E 7.08 U. S. Public Land Survey Monument Record (3)(a)(b)(c)(d)(e)(f)(g)(h)(i). An additional sheet may be added if necessary to conform with said requirements.

**(a) CORNER LOCATION:**

E 1/4 corner of Sec. 22  
 Township 35 North  
 Range 7 East  
 Town King

State Plane Coordinates  
 X ---  
 Y ---  
 Datum Base ---  
 County of Lincoln



**(b) HISTORY OF ORIGINAL CORNER ESTABLISHMENT:**

Original Surveyor: Alfred Millard  
 Date of Survey: Commenced July 1861  
 Completed July 1861

Original B.T.'S

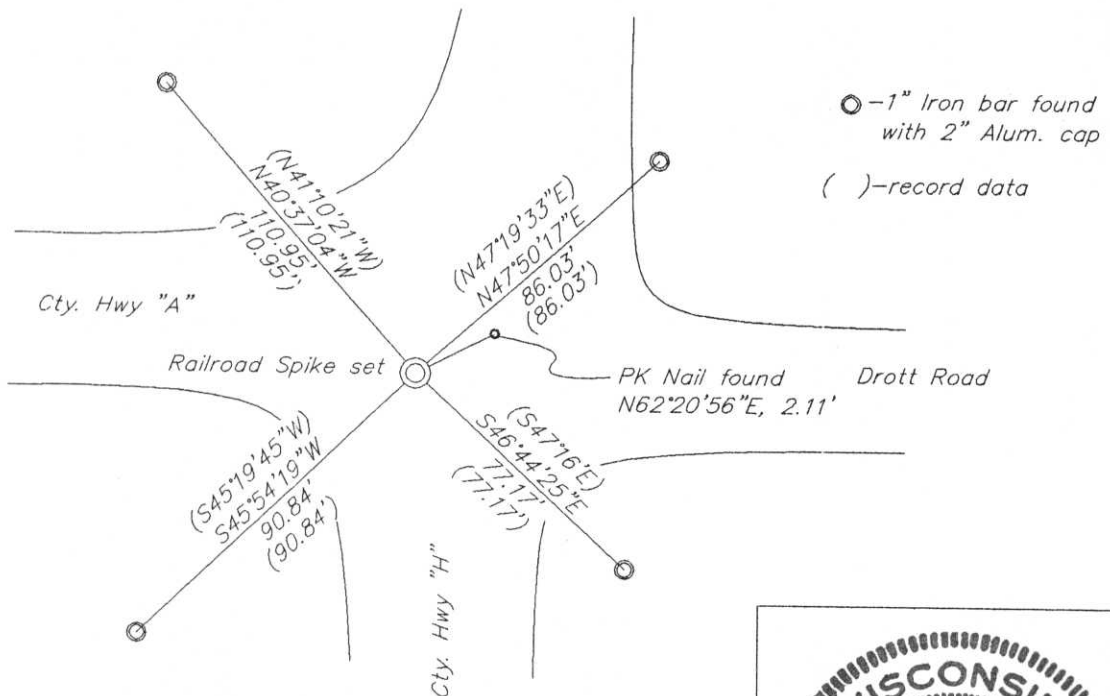
20" Maple, S50°W, 6 lks  
 12" Hemlock, N18°E, 4 lks

(b)(f)(g)(h) Description of monument found at this corner and if it was accepted-state all evidence (material-testimonial-occupation-plats-records-other monuments) used as a basis for accepting. If not accepted or if nothing was found state evidence used as basis for establishing location. If reestablished through lost corner proportionate methods indicate all monuments-distances and directions used to establish. Indicate type of monument and sign post found or set.

- 1861- Alfred Millard set a wood post.
- 1976- Lester Schmit found a 1" iron pipe and replaced it with a Berntsen Monument 3" below grade. Bt's: 15" Basswood N63°E, 73.97', Power pole S53°E, 28.44', 17" Yellow Birch S48°W, 131.14', Southeast corner of house N47°W, 163.73'.
- 1995- David Lemke found Berntsen Monument and found Schmit's Basswood BT and distance to house checked. He set 4 iron bars as witnesses.
- 1999- I found Lemke's 4 iron bars. I did not recover the Berntsen Monument. I set a railroad spike in the blacktop at the correct 1/4 section corner location using Lemke's iron bars. See sketch below.

(c)(d)(e) Plan view of corner with ties to at least 4 witness monuments. If in disagreement with previously established corner-show the distances between the two corners and also indicate the ties to the disputed.

RECEIVED AT LINCOLN COUNTY  
 COURTHOUSE THIS 16<sup>TH</sup> DAY  
 OF April 20 01  
 Tony Duthman  
 LAND INFORMATION OFFICE



(i) I Charles E. Winkler S-1431 hereby certify that the corner location on this record was determined by me or under my direction and control and that this U.S. Public Land Survey Monument Record is correct and complete to the best of my knowledge and belief.

Signature Charles E. Winkler Date 4/12/2001  
 Foltz and Associates, Inc.



INDEX NO. 0-17

# U.S. PUBLIC LAND SURVEY MONUMENT RECORD

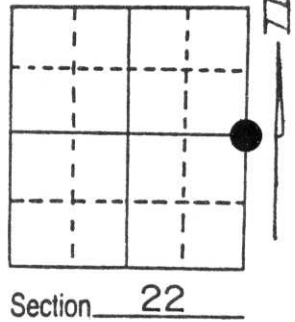
Note: This form is intended and designed to fulfill all requirements of Wisconsin Administrative Code, Chapter A-E 5.02, U.S. Public Land Survey Monument Record (3) (a) (b) (c) (d) (e) (f) (g) (h) (i). An additional sheet may be added if necessary to conform with said requirements.

(a) Corner location: Township 35 North

Range 7 East

Town/City/Village KING

County LINCOLN

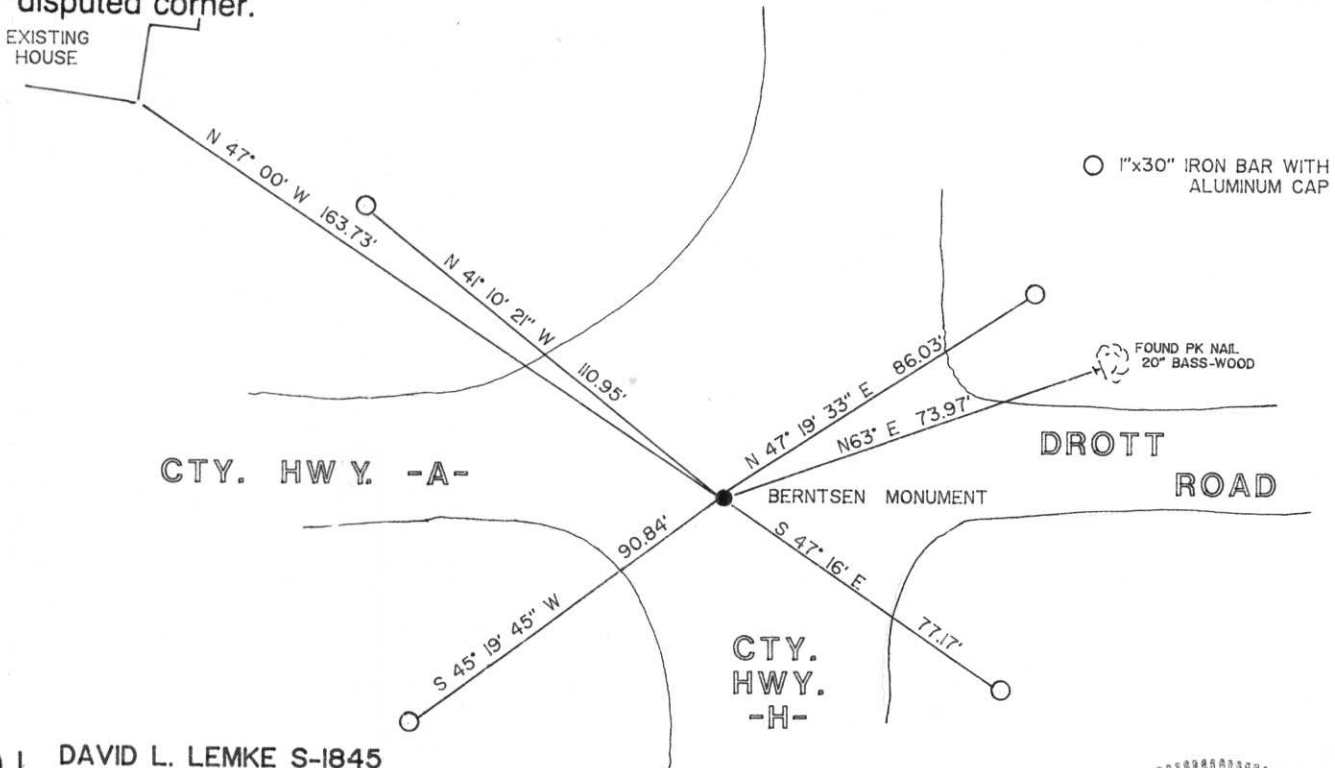


(b) (f) (g) (h) Description of monument found at this corner and if it was accepted, state all evidence (material, testimonial, occupational, plats, records, other monuments) used as a basis for accepting. If not accepted or if nothing was found, state evidence used as basis for establishing location. If reestablished through lost corner proportionate methods, indicate all monuments, distances and directions used to establish.

JULY 1861, ALFRED MILLARD SET A WOOD POST WITNESSED BY: 20" MAPLE S50°W, 6 LKS.  
12" HEMLOCK N18°E, 4 LKS.

AUGUST 1978, LESTER SCHMIT SET A BERNTSEN MONUMENT  
WITNESSED BY: PK NAIL IN 15" BASSWOOD N63°E, 73.97'  
PK NAIL IN POWER POLE S53°E, 28.44'  
PK NAIL IN 17" YELLOW BIRCH S48°W, 131.14'  
SOUTHEAST CORNER OF HOUSE N47°W, 163.73'  
THE TIES TO THE HOUSE AND THE BASSWOOD REMAIN. DISTANCES CHECK.

(c) (d) (e) Plan view of corner with ties to at least 4 witness monuments. If in disagreement with previously established corner, show the distances between the two corners and also indicate the ties to the disputed corner.



(i) I, DAVID L. LEMKE S-1845

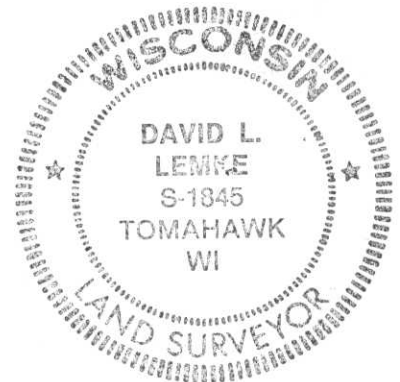
(type or print name) certify that the corner location on this record was determined by me or under my direction and control and that this U.S. Public Land Survey Monument Record is correct and complete to the best of my knowledge and belief.

*[Handwritten Signature]*

5-1-95

Signature

Date



Index No. 0-17

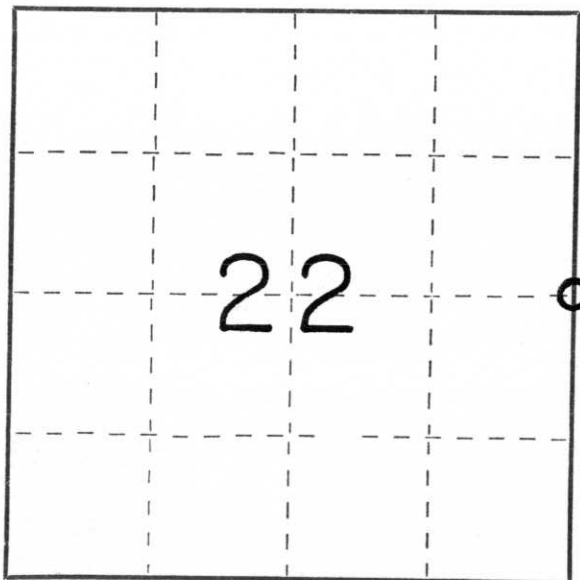
CERTIFIED LAND CORNER RESTORATION

Index No. 0-17

State of Wisconsin }  
County of Lincoln } ss.

I, Lester J. Schmit, do hereby  
certify that on the 22nd day  
of January, 1976, I found  
evidence of the East 1/4  
corner of Section 22  
Township 35, North, Range  
7 East, Fourth, Principal Meridian,  
as described hereon; and that from this evidence  
I established a new monument and accessories  
as described hereon to perpetuate the original  
location of this corner.

Resident witnesses:



○ = Corner monument restored.

History of original corner establishment:

Surveyor: Alfred Millard  
Date: July 1861  
Monumentation: Wood Post  
Witnesses: 20" Maple S 50° W, 6 lks  
12" Hemlock N 18° E, 4 lks

Description of corner evidence found: Found 1" iron pipe at the intersection of County  
Trunk Highways "A" & "H", and on the south side of the traveled way on  
Drott Road.

Description of monument and accessories I established to perpetuate the original location of this corner.  
Berntsen Monument - 30" (Set 3" below surface of road.)

P.K. Nail in 15" Basswood, N 63° E, 73.97'  
P.K. Nail in power pole, S 53° E, 28.44'  
P.K. Nail in 17" Yellow Birch, S 48° W, 131.14'  
Southeast corner of house, N 47° W, 163.73'

Dated at Tomahawk, Wis., this 31st day of August, 19 78.

Signature Lester J. Schmit Title Land Surveyor Registration No. S-1192  
(County Surveyor, Registered Land Surveyor, or other duly authorized official)

Office of Register of Deeds, County of \_\_\_\_\_, I hereby certify that the within  
instrument was filed in this office for record on the \_\_\_\_\_ day of \_\_\_\_\_, 19 \_\_\_\_\_  
at \_\_\_\_\_ o'clock \_\_\_\_\_ M.

(Register of Deeds)

By \_\_\_\_\_ Deputy



31 1:38 PM



31 1:36 PM



31 1:35 PM