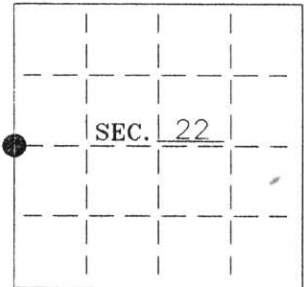


U. S. PUBLIC LAND SURVEY MONUMENT RECORD

Note: This form is intended and designed to fulfill all requirements of Wisconsin Administrative Code-Chapter A-E 7.08 U. S. Public Land Survey Monument Record (3)(a)(b)(c)(d)(e)(f)(g)(h)(i). An additional sheet may be added if necessary to conform with said requirements.

(a) CORNER LOCATION: State Plane Coordinates
W 1/4 corner of Sec. 22 X ---
 Township 35 North Y ---
 Range 7 East Datum Base ---
 Town King County of Lincoln



(b) HISTORY OF ORIGINAL CORNER ESTABLISHMENT:

Original Surveyor: Alfred Millard
 Date of Survey: Commenced July 1861
 Completed July 1861

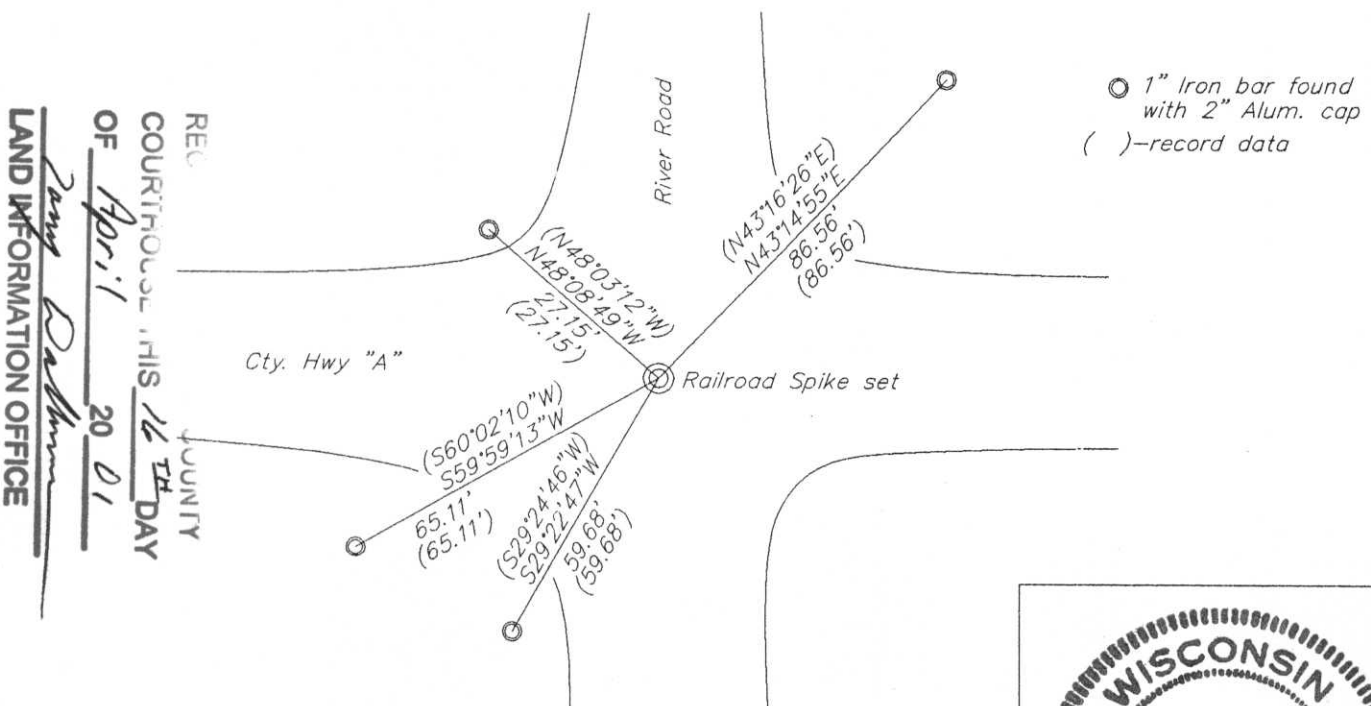
Original B.T.'S

10" Yellow Pine N65°E, 120 lks
 9" Yellow Pine S42°W, 78 lks

(b)(f)(g)(h) Description of monument found at this corner and if it was accepted—state all evidence (material—testimonial—occupation—plats—records—other monuments) used as a basis for accepting. If not accepted or if nothing was found state evidence used as basis for establishing location. If reestablished through lost corner proportionate methods indicate all monuments—distances and directions used to establish. Indicate type of monument and sign post found or set.

- 1861— Alfred Millard set a wood post.
- 1978— Lester Schmit found a 1-1/2" iron pipe and a PK nail in 18" Norway Pine N35°E, 58.14'. He set a Berntsen Monument and made 3 additional BT's: Power pole S64°E, 48.15', 12" Jack Pine S32°W, 72.21', and 20" Norway Pine N66°W, 33.63'.
- 1995— David Lemke found Schmit's Jack Pine BT, now a stump, and reset a Berntsen Monument and made 4 new BT's.
- 1999— I found Lemke's 4 iron bar witnesses and set a railroad spike using Lemke's witnesses. See sketch below.

(c)(d)(e) Plan view of corner with ties to at least 4 witness monuments. If in disagreement with previously established corner—show the distances between the two corners and also indicate the ties to the disputed.



REC
 OF
 APR 11 20 01
 COUNTY
 LAND INFORMATION OFFICE

(i) I Charles E. Winkler S-1431
 hereby certify that the corner location on this record was determined by me or under my direction and control and that this U.S. Public Land Survey Monument Record is correct and complete to the best of my knowledge and belief.

Charles E. Winkler 4/12/2001
 Signature Foltz and Associates, Inc. Date



INDEX NO. 0-13

U.S. PUBLIC LAND SURVEY MONUMENT RECORD

Note: This form is intended and designed to fulfill all requirements of Wisconsin Administrative Code, Chapter A-E 5.02, U.S. Public Land Survey Monument Record (3) (a) (b) (c) (d) (e) (f) (g) (h) (i). An additional sheet may be added if necessary to conform with said requirements.

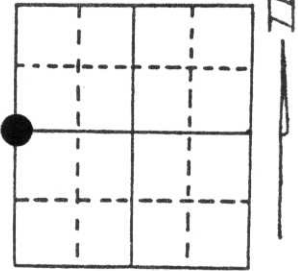
(a) Corner location: Township 35 North

Range 7 East

KING

Town/City/Village _____

County LINCOLN



Section 22

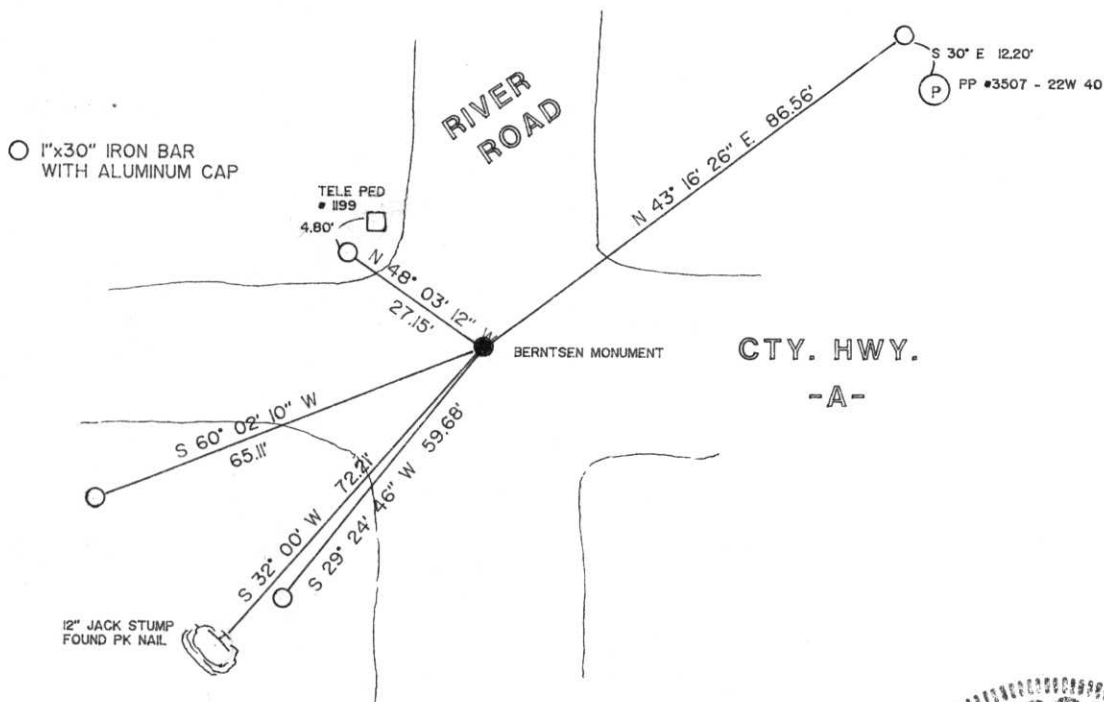
(b) (f) (g) (h) Description of monument found at this corner and if it was accepted, state all evidence (material, testimonial, occupational, plats, records, other monuments) used as a basis for accepting. If not accepted or if nothing was found, state evidence used as basis for establishing location. If reestablished through lost corner proportionate methods, indicate all monuments, distances and directions used to establish.

JULY 1861, ALFRED MILLARD SET A WOOD POST WITNESSED BY: 10" YELLOW PINE N65°E, 120 LKS.
9" YELLOW PINE S42°W, 78 LKS.

AUGUST 1978, LESTER SCHMIT SET A BERNTSEN MONUMENT
WITNESSED BY: PK NAIL IN POWER POLE S64°E, 48.15'
PK NAIL IN 12" JACK PINE S32°W, 72.21'
PK NAIL IN 20" NORWAY PINE N 66°W, 33.63'

THE ONLY TIE REMAINING WAS THE STUMP OF THE 12" JACK PINE WITH A PK NAIL
THE DISTANCE CHECKED.

(c) (d) (e) Plan view of corner with ties to at least 4 witness monuments. If in disagreement with previously established corner, show the distances between the two corners and also indicate the ties to the disputed corner.



(i) I, DAVID L. LEMKE S-1845

(type or print name) certify that the corner location on this record was determined by me or under my direction and control and that this U.S. Public Land Survey Monument Record is correct and complete to the best of my knowledge and belief.

Signature _____

Date 5.1.95



Index No. 0-13

CERTIFIED LAND CORNER RESTORATION

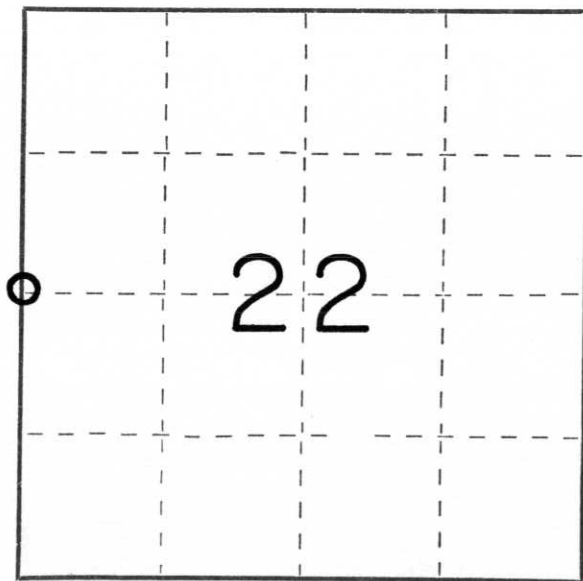
Index No. 0-13

State of Wisconsin }
County of Lincoln } ss.

I Lester J. Schmit, do hereby certify that on the 22nd day of January, 1977, I found evidence of the West 1/4 corner of Section 22 Township 35, North, Range 7 East, Fourth, Principal Meridian, as described hereon; and that from this evidence I established a new monument and accessories as described hereon to perpetuate the original location of this corner.

Resident witnesses:

.....
.....
.....



○ = Corner monument restored.

History of original corner establishment:

Surveyor: Alfred Millard
Date: July 1861
Monumentation: Wood Post
Witnesses: 10" Yellow Pine N 65° E, 120 lks
9" Yellow Pine S 42° W, 78 lks

Description of corner evidence found: 1 1/2" iron pipe found at intersection of roads north, east, south & west. P.K. Nail in 18" Norway Pine, N 35° E, 58.14'

Description of monument and accessories I established to perpetuate the original location of this corner.

Berntsen Monument - 30" (Set 3" below surface of road.)

- P.K. Nail in power pole, S 64° E, 48.15'
- P.K. Nail in 12" Jack Pine, S 32° W, 72.21'
- P.K. Nail in 20" Norway Pine, N 66° W, 33.63'

Dated at Tomahawk, Wis., this 31st day of August, 1978

Signature Lester J. Schmit Title Land Surveyor Registration No. S-1192
(County Surveyor, Registered Land Surveyor, or other duly authorized official)

Office of Register of Deeds, County of....., I hereby certify that the within instrument was filed in this office for record on the..... day of....., 19..... at..... o'clock..... M.

.....
(Register of Deeds)

By..... Deputy



26 2:41 PM



26 2:33 PM



26 2:34 PM



26 2:32 PM



26 2:32 PM