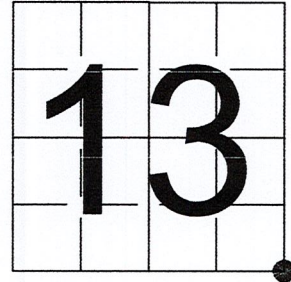


U S PUBLIC LAND SURVEY MONUMENT RECORD

NOTE: This form is intended and designed to fulfill all requirements of Wisconsin Administrative Code, Chapter A-E 7.08 U.S. Public Land Survey Monument Record (3) (a-i)

A-E 7.08(3)(a) Identity of corner:
 SOUTHEAST CORNER SECTION 13,
 TOWNSHIP 35 NORTH,
 RANGE 07 EAST OF THE 4TH PM,
 TOWN OF KING,
 COUNTY OF LINCOLN

WISCORS - LINCOLN COUNTY
 N: 242,540.093 USft (242,540.047)
 E: 428,392.081 USft (428,391.964)
 Datum: NAD83 (2011)
 GNSS Method RTN - Direct
 GNSS Control WISCORS VRS



The coordinate value shown has been verified by the average of two or more GPS observations at a markedly different time. Coordinates shown in parenthesis are provided by Lincoln County.

A-E 7.08(3)(b)

Original Surveyor: Alfred Millard

Date of Original Survey	Commenced:	August 1860	Original Accessories:		
	Completed:	September 1860	W. Pine	10	N 31° W 11 Links
			W. Pine	6	N 55° E 27 Links
			Y. Pine	18	S 49° E 7 Links
			Y. Pine	18	S 75° W 24 Links

1937 - Surveyor Francis Fuchs (aka Francis Fox) - indicates this position by a symbol (no description) on Lincoln County map L280A & L280B.

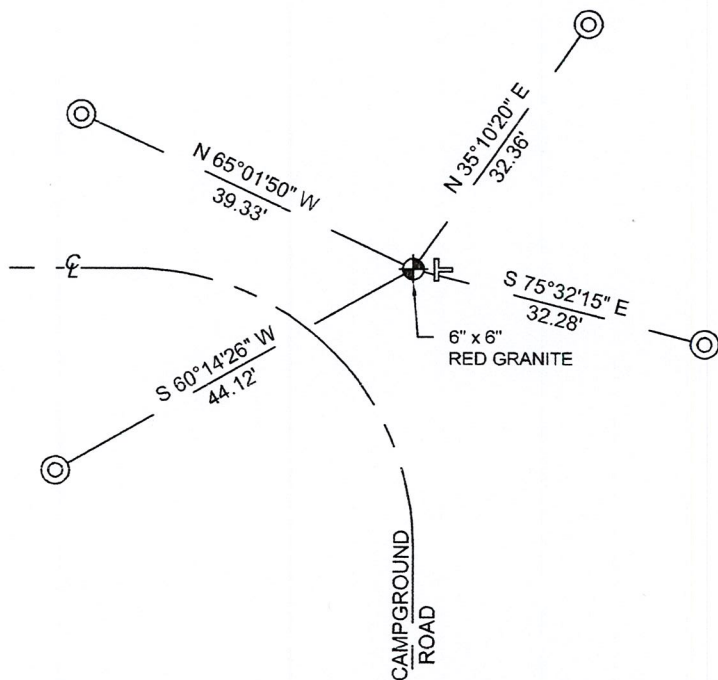
November 7, 2004 - Surveyor 2405 - Anthony R. Dallman - indicates this position as "6" x 6" granite monument" on Section Summary of Section 13, T. 35 N. R. 7 E. Township of King, Lincoln County, Wisconsin.

May 3, 2008 - Surveyor 1523 - Todd Loftus - indicates this position as "Sec. cor. granite monument" on Lincoln County map S488B.

May 23, 2011 - Surveyor 2343 - Kevin P. Bixby - indicates this position as "existing granite monument" on Lincoln County map M606A.

September 15, 2022 - While performing the 2022 Lincoln County PLSS Corner Remonumentation and GPS Services project, I found a 6" x 6" red granite stone near the computed position provided by Lincoln County. The monument extends ±12" above ground. I established 4 new reference monuments as shown below.

A-E 7.08(3)(c)(d) Plan view of corner with references to at least 4 witness monuments.



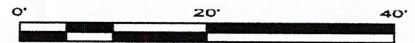
BEARINGS LISTED TO THE NEAREST SECOND ARE REFERENCED TO WISCONSIN COUNTY COORDINATE REFERENCE SYSTEM - LINCOLN COUNTY ZONE. ALL OTHER BEARINGS ARE MAGNETIC



RECEIVED BY LINCOLN COUNTY SURVEYOR THIS 27TH DAY OF December 20 22
Jeffrey DeMuth
 COUNTY SURVEYOR

LEGEND

- 6" x 6" red granite monument, found
- 7/8" diameter X 30" long - iron rod with 2" diameter aluminum cap, set
- Vinyl T-post, set ±1.0 feet east of corner



A-E 7.08(3)(e) 1860 Surveyor set a post, 1937 - 2011 Surveyors all had a granite monument. I found 6" x 6" red granite monument.

A-E 7.08(3)(f) I accept this monument as a FOUND PERPETUATED LOCATION of the corner.

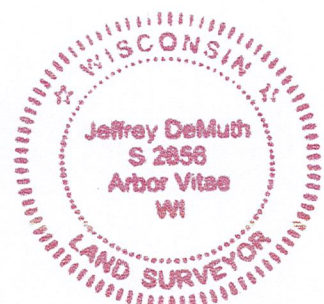
A-E 7.08(3)(g)(h) This corner was not determined through lost-corner-proportionate methods.

A-E 7.08(3)(i) I, Jeffrey L. DeMuth, Professional Land Surveyor No. S-2656, hereby certify that the corner location on this record was determined by the Lincoln County Surveyor, and the monuments found or set as shown hereon were measured by me or under my direction and control, and that this U.S. Public Land Survey Monument Record is correct and complete to the best of my knowledge, and belief.

SIGNATURE

December 14, 2022

DATE



M-25

REPORT

2022-Lincoln County PLSS Corner Remonumentation and GPS Services

Wisconsin Corner Point Identification Number: 43507130000

Surveyor: Jeffrey L. DeMuth – S2656

Corner monument: Found 6" x 6" red granite stone.

Field Book: Cardinal North – Lincoln Co. Remon. – 2022-00

Page: 45

Horizontal Datum: WisCRS – Lincoln County Zone – NAD83(2011)

Date / time of initial measurement:

September 15, 2022 - Start 12:35:58 CDT – End 12:50:10 CDT

Reference monuments:

4 – Set - 7/8" diameter X 30" long iron rods with 2" diameter Lincoln Co. aluminum cap.

Coordinate Table

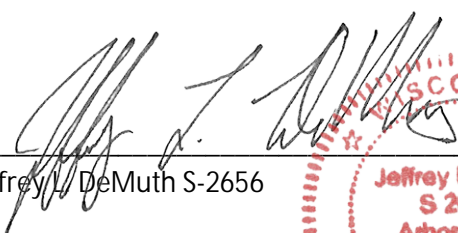
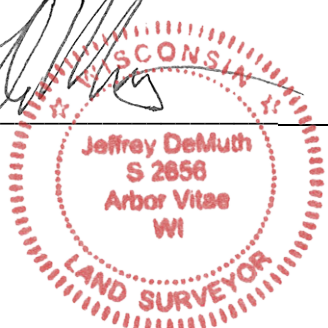
	County Provided	2022 Measurement	Difference
North	242540.047	242540.093	-0.05
East	428391.964	428392.081	-0.12

Observed coordinates match with existing coordinates within reason.

Request Data Log for more information.

Additional Notes:

Corner falls on a north-south cut line and extends ± 1 foot above grade.


 Jeffrey L. DeMuth S-2656
 
 October 7, 2022
 Date

43507130000_Mon-N



43507130000_North



43507130000_West



43507130000_South



43507130000_East

