

# U S PUBLIC LAND SURVEY MONUMENT RECORD - ADDENDUM

NOTE: This form is intended and designed to fulfill all requirements of Wisconsin Administrative Code, Chapter A-E 7.08 U.S. Public Land Survey Monument Record (3) (a-i)

A-E 7.08(3)(a) Identity of corner:  
 SOUTH 1/4 CORNER SECTION 13,  
 TOWNSHIP 35 NORTH,  
 RANGE 07 EAST OF THE 4TH PM,  
 TOWN OF KING,  
 COUNTY OF LINCOLN

WISCRS - LINCOLN COUNTY  
 N: 242,585.803 USft (242,585.7599)  
 E: 425,787.773 USft (425,787.9299)  
 Datum: NAD83 (2011)  
 GNSS Method RTK  
 GNSS Control WISCORS VRS



The coordinate value shown has been verified by the average of two or more GPS observations at a markedly different time. Coordinates shown in parenthesis are previously published values.

A-E 7.08(3)(b)

Original Surveyor: Alfred Millard

Date of Original Survey	Commenced:	June, 1861	Original Accessories:		
	Completed:	July, 1861	Spruce	10	S 72° W 28 Links
			W. Pine	10	N 59° E 28 Links

See previous Certified Land Corner Restoration M-23 - October 21, 1977 - Surveyor 1143 - Chester J. Nowaczyk - THENCE:

August 17, 1989 - Surveyor 1410 - James L. Will - indicates this position as "Lincoln County aluminum breakaway monument found" on Lincoln County Certified Survey Map #546 in Volume 2 of Records, Page 480.

August 15, 1994 - Surveyor 129 - Leonard L. Lampert - indicates this position as "Berntsen monument found" on Lincoln County map L190B.

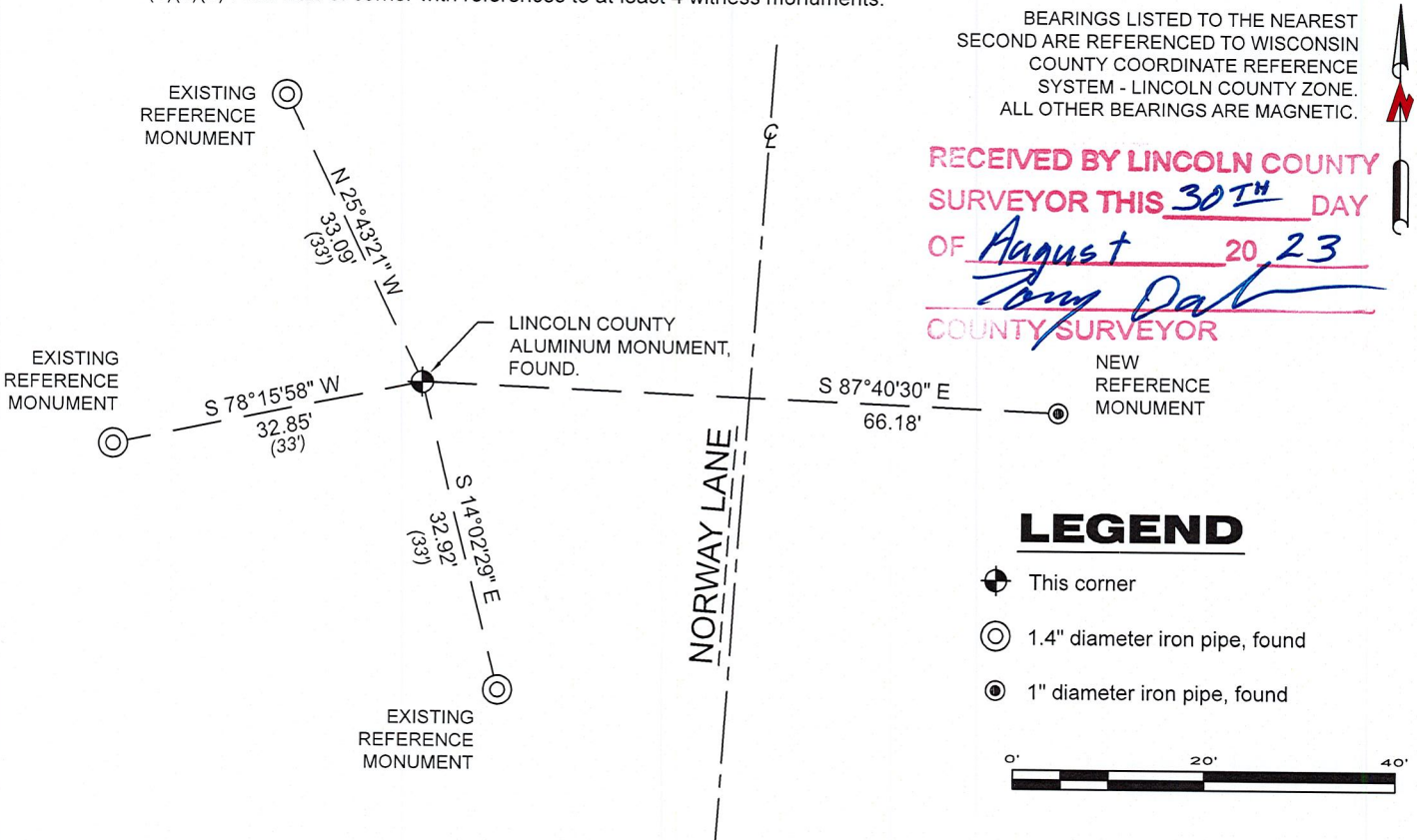
August 19, 2005 - Surveyor 1192 - Lester J. Schmidt - indicates this position as "Berntsen monument found" on Lincoln County map M516B.

May 23, 2011 - Surveyor 2343 - Kevin P. Bixby - indicates this position as "existing Lincoln County Berntsen monument" on Lincoln County map M606A.

June 12, 2023 - I found a Lincoln County cast aluminum monument with a 4" diameter aluminum cap near the published coordinate position. The monument flush with grade.

I also found 3 of Nowaczyk's reference monuments and I established 1 new reference monument as shown below.

A-E 7.08(3)(c)(d) Plan view of corner with references to at least 4 witness monuments.

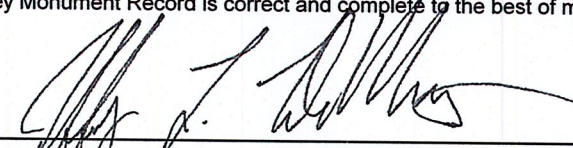


A-E 7.08(3)(e) 1861 Surveyor set a post, 1977 Surveyor set a Berntsen monument, 1994, 2005 and 2011 Surveyors found the same, as did I in 2023.

A-E 7.08(3)(f) I accept this monument as a FOUND PERPETUATED LOCATION of the corner.

A-E 7.08(3)(g)(h) This corner was previously determined through lost-corner-proportionate methods.

A-E 7.08(3)(i) I, Jeffrey L. DeMuth, Professional Land Surveyor No. S-2656, hereby certify that the corner location on this record was determined by me or under my direction and control, and that this U.S. Public Land Survey Monument Record is correct and complete to the best of my knowledge, and belief.

  
 SIGNATURE \_\_\_\_\_ DATE August 30, 2023



M-23

CERTIFIED LAND CORNER RESTORATION

Index No. M-23

State of Wisconsin }  
County of LINCOLN } ss.

History of original corner establishment:

I Chester J. Nowaczyk, do hereby certify that on the 9th day of Oct, 1977, I found evidence of the 5/4 corner of SEC 13 Township 35, North, Range 7 EAST, Fourth, Principal Meridian, as described hereon; and that from this evidence I established a new monument and accessories as described hereon to perpetuate the original location of this corner.

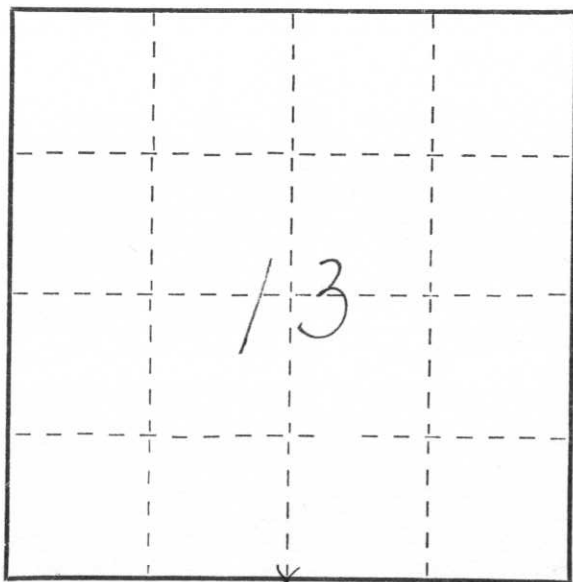
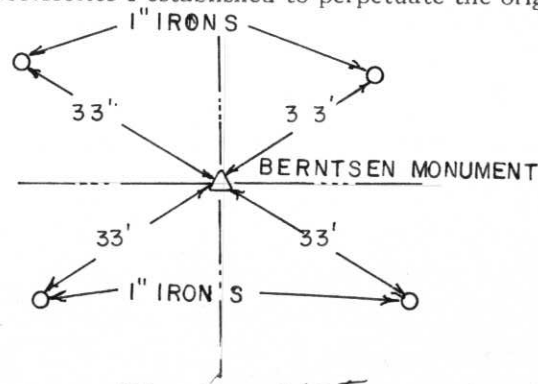
Description of corner evidence found:

SET BY SINGLE PORTION MEASUREMENT

Resident witnesses:

.....  
.....  
.....

Description of monument and accessories I established to perpetuate the original location of this corner.



○ = Corner monument restored.

Dated at WAUSAU, Wis., this 21ST day of Oct, 1977.

Signature Chester J. Nowaczyk Title REGISTERED LAND SURVEYOR Registration No. 51143  
(County Surveyor, Registered Land Surveyor, or other duly authorized official)

Office of Register of Deeds, County of \_\_\_\_\_, I hereby certify that the within instrument was filed in this office for record on the \_\_\_\_\_ day of \_\_\_\_\_, 19\_\_\_\_ at \_\_\_\_\_ o'clock \_\_\_\_\_ M.

.....  
(Register of Deeds)

By \_\_\_\_\_ Deputy



27 12 18 PM



27 12:16 PM



27 10:25 AM



27 12:19 PM