

U.S. PUBLIC LAND SURVEY MONUMENT RECORD

NOTE: This form is intended and designed to fulfill all requirements of Wisconsin Administrative Code, Chapter A-E 7.08 U.S. Public Land Survey Monument Record. An additional sheet may be added if necessary to conform with said requirements.

CORNER LOCATION

Quarter Corner common to Sections 14 and 23
Township 35 North, Range 7 East of the 4th P.M.
Town of King, Lincoln County, Wisconsin

HISTORY OF ORIGINAL CORNER ESTABLISHMENT

ORIGINAL SURVEYOR: Alfred Millard
DATE OF SURVEY: June 1861
ORIGINAL ACCESSORIES: At 39.84 ch, set Quarter Section Post
10" Sugar, S2°W, 63 lks
10" White Pine, S63°E, 28 lks

6	5	4	3	2	1
7	8	9	10	11	12
18	17	16	15	14	13
19	20	21	22	23	24
30	29	28	27	26	25
31	32	33	34	35	36

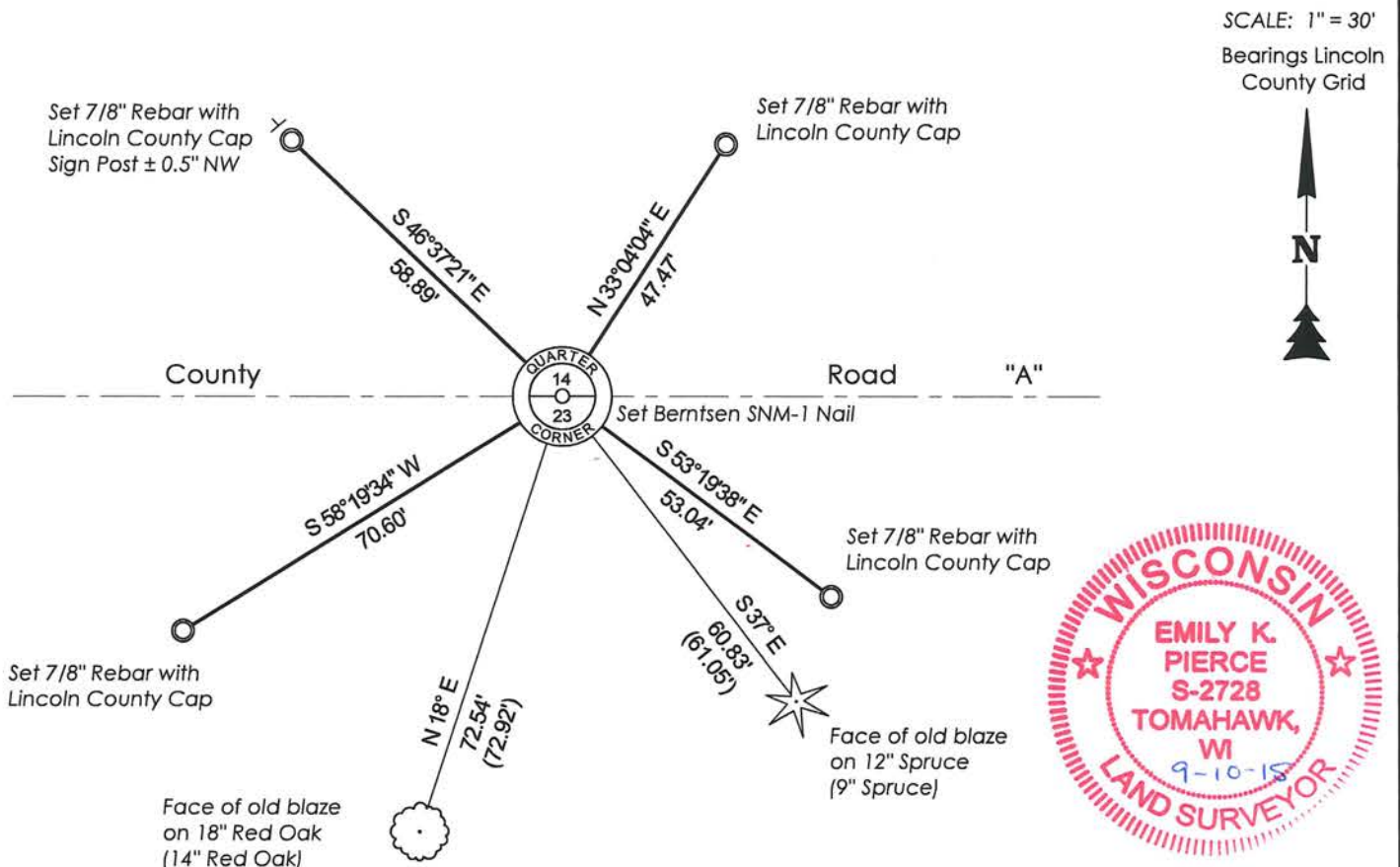
T35N - R7E

DESCRIPTION OF MONUMENT FOUND AT THIS CORNER AND IF IT WAS ACCEPTED, STATE ALL EVIDENCE (MATERIAL, TESTIMONIAL, OCCUPATIONAL, PLATS, RECORDS, OTHER MONUMENTS) USED AS A BASIS FOR ACCEPTING. IF NOT ACCEPTED OR IF NOTHING WAS FOUND, STATE EVIDENCE USED AS BASIS FOR ESTABLISHING LOCATION. IF RE-ESTABLISHED THROUGH LOST CORNER PROPORTIONATE METHODS, INDICATE ALL MONUMENTS, DISTANCES AND DIRECTIONS USED TO ESTABLISH. INDICATE TYPE OF MONUMENT AND SIGN POST FOUND OR SET.

10/13/1991 Lester Schmit reported that he could not find a monument for the location of this corner. From local witness of Lawrence Bishop, a very long time resident of this area, he located a rock pile which Mr. Bishop said was on a fence line running South from this corner location. Extending this line Northerly to intersect with the center-line of County Trunk Highway "A" and there he set a Berntsen monument for the corner location and witnessed with four trees as shown on previous tiesheet.

8/31/2015 I visited corner location and found two trees to the South that had blazes overgrown and matched witnesses as previously shown on 1991 tiesheet. Got a metal reading along the centerline of the road and believe that Berntsen monument still exists under pavement. Used coordinate information provided by Lincoln County Surveyor and compared location with metal reading and record distances to existing trees (taking into account tree growth) and all locations seemed to check with each other. Set a Berntsen SNM - 1 Survey Nail Marker at the surface of the road and set four new ties as shown below.

PLAN VIEW OF CORNER WITH TIES TO AT LEAST 4 WITNESS MONUMENTS. IF IN DISAGREEMENT WITH PREVIOUSLY ESTABLISHED CORNER, SHOW THE DISTANCES BETWEEN THE TWO CORNERS AND ALSO INDICATE THE TIES TO THE DISPUTED.



RECEIVED BY LINCOLN COUNTY
SURVEYOR THIS 16TH DAY
OF September 20 15
Tony Dak
COUNTY SURVEYOR

I, Emily K. Pierce, Professional Land Surveyor No. S-2728, hereby certify that the corner location on this record was determined by me or under my direction and control and that this U.S. Public Land Survey Monument Record is correct and complete to the best of my knowledge and belief.

Emily K. Pierce
Emily K. Pierce, PLS No. S-2728
STEIGERWALDT LAND SURVEYING, LLC

M-19

U.S. PUBLIC LAND SURVEY MONUMENT RECORD

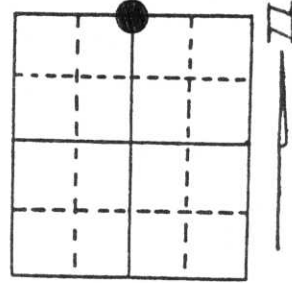
Note: This form is intended and designed to fulfill all requirements of Wisconsin Administrative Code, Chapter A-E 5.02, U.S. Public Land Survey Monument Record (3) (a) (b) (c) (d) (e) (f) (g) (h) (i). An additional sheet may be added if necessary to conform with said requirements.

(a) Corner location: Township 35 North

Range 7 East

Town/City/Village King

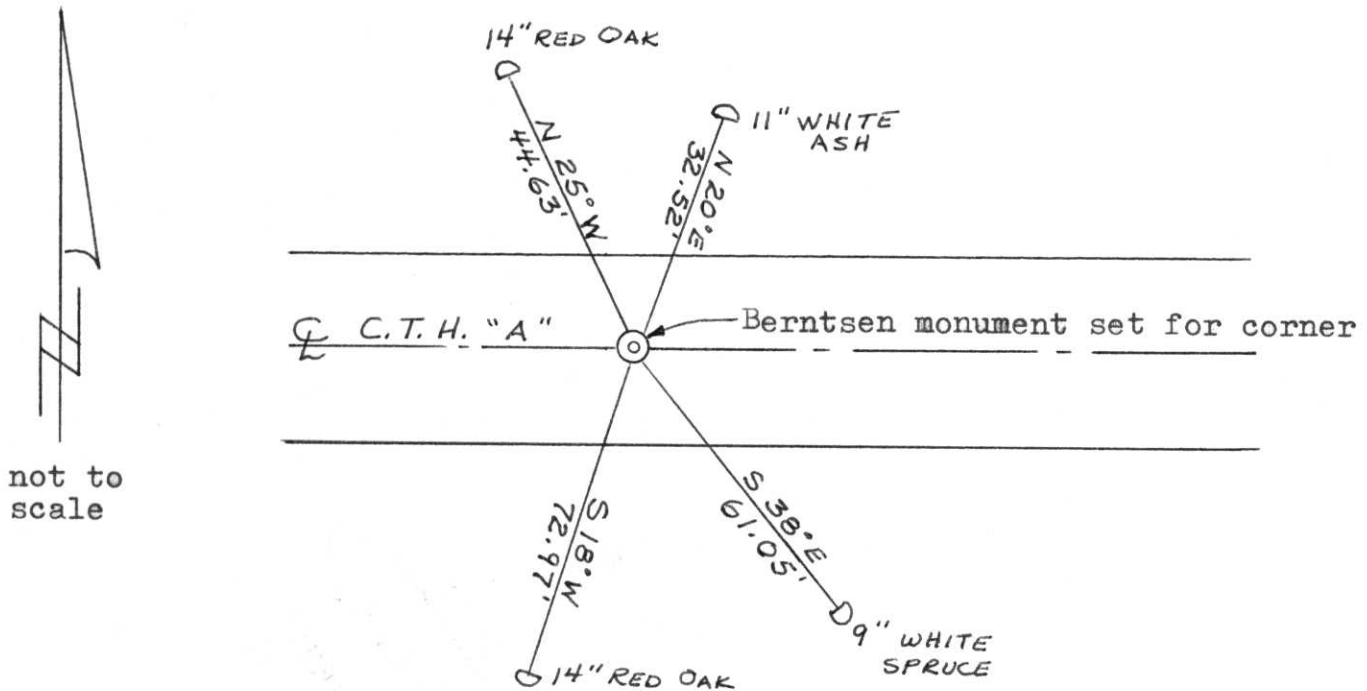
County Lincoln



Section 23

(b) (f) (g) (h) Description of monument found at this corner and if it was accepted, state all evidence (material, testimonial, occupational, plats, records, other monuments) used as a basis for accepting. If not accepted or if nothing was found, state evidence used as basis for establishing location. If reestablished through lost corner proportionate methods, indicate all monuments, distances and directions used to establish. Original Gov't. Survey: June 1861 by Alfred Millard, set wood post for corner with bearings, sugar maple 10" S 2° W 63 links & white pine 10" S 63° E 28 links. I could not find a monument for the location of this corner. From local witness of Lawrence Bishop, a very long time resident of this area, I located a rock line which Mr. Bishop said was on a fence line running south from this corner location. Extending this line northerly to intersect with the centre-line of County Trunk Highway "A" and there I set a Berntsen monument for the corner location and witnessed as shown below.

(c) (d) (e) Plan view of corner with ties to at least 4 witness monuments. If in disagreement with previously established corner, show the distances between the two corners and also indicate the ties to the disputed corner.



(i) I, Lester J. Schmit R.L.S. S-1192

(type or print name) certify that the corner location on this record was determined by me or under my direction and control and that this U.S. Public Land Survey Monument Record is correct and complete to the best of my knowledge and belief.

Lester J. Schmit 13 Oct 91
Signature Date



Index No. M-19