

U.S. PUBLIC LAND SURVEY MONUMENT RECORD

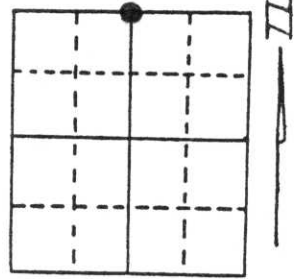
Note: This form is intended and designed to fulfill all requirements of Wisconsin Administrative Code, Chapter A-E 5.02, U.S. Public Land Survey Monument Record (3) (a) (b) (c) (d) (e) (f) (g) (h) (i). An additional sheet may be added if necessary to conform with said requirements.

(a) Corner location: Township 35 North

Range 7 East

Town/City/Village King

County Lincoln

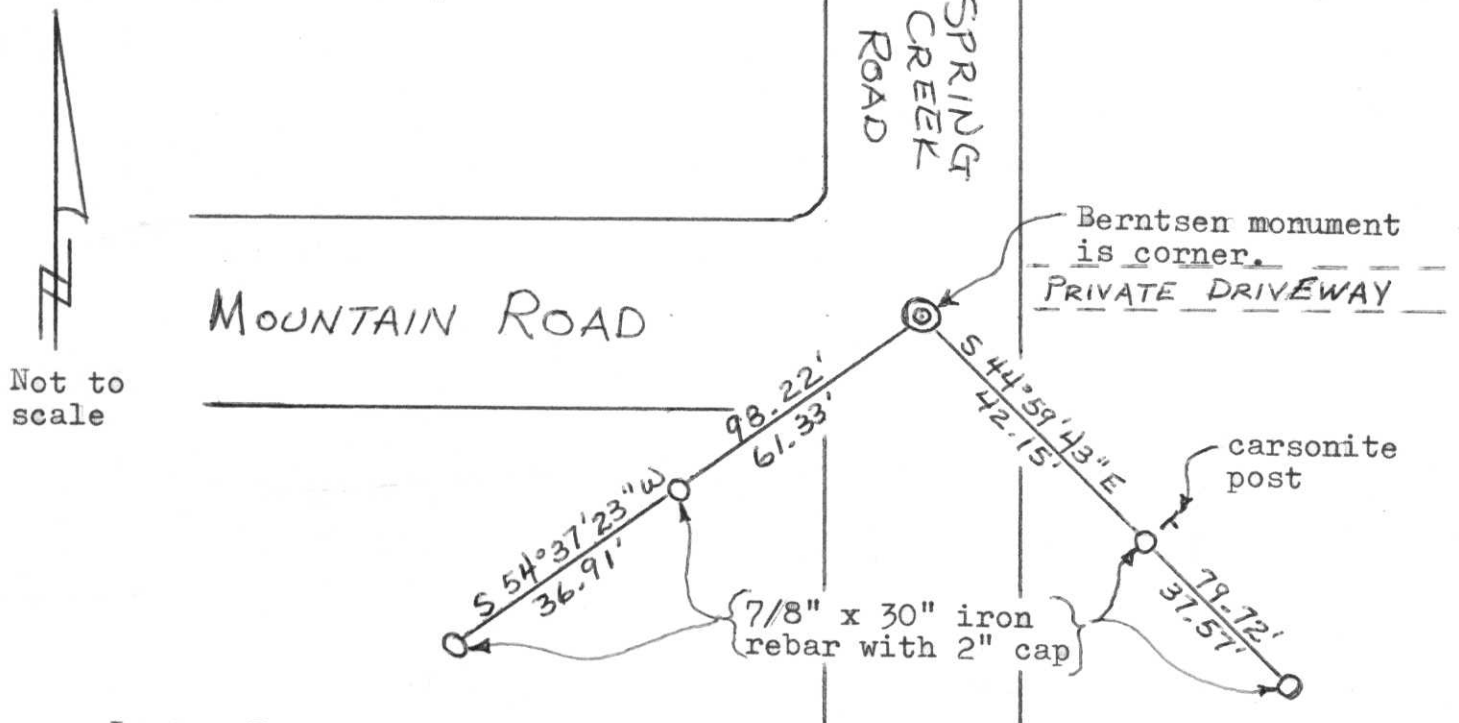


Section 20

(b) (f) (g) (h) Description of monument found at this corner and if it was accepted, state all evidence (material, testimonial, occupational, plats, records, other monuments) used as a basis for accepting. If not accepted or if nothing was found, state evidence used as basis for establishing location. If reestablished through lost corner proportionate methods, indicate all monuments, distances and directions used to establish. Original Gov't. Survey: July 1861 by Alfred Millard, set wood post for corner with bearings, spruce pine 5 N 65° W 15 links & spruce pine 5 S 20° E 18 links. No original evidence found. I found a 1/2" iron pin at the intersection of the centre-lines of Spring Creek Road & Mountain Road for the corner. I replaced the iron pin with a Berntsen monument for the corner & witnessed it as shown below.

RECEIVED AT LINCOLN COUNTY
COURTHOUSE THIS 4th DAY
OF Oct 1995
Pat Priske
TAX DESCRIPTION OFFICE

(c) (d) (e) Plan view of corner with ties to at least 4 witness monuments. If in disagreement with previously established corner, show the distances between the two corners and also indicate the ties to the disputed corner.



Not to scale

(i) I, Lester J. Schmit

(type or print name) certify that the corner location on this record was determined by me or under my direction and control and that this U.S. Public Land Survey Monument Record is correct and complete to the best of my knowledge and belief.

Lester J. Schmit
Signature

4 Oct 95
Date



Index No. M-7

MINK CAPITAL SURVEYING, INC.

SURVEY MONUMENT LOCATION RECORD

SECTION 17
 TOWNSHIP 35 N
 RANGE 7E
LINCOLN
 [CITY, VILLAGE, COUNTY]

LANDMARK BENCHMARK

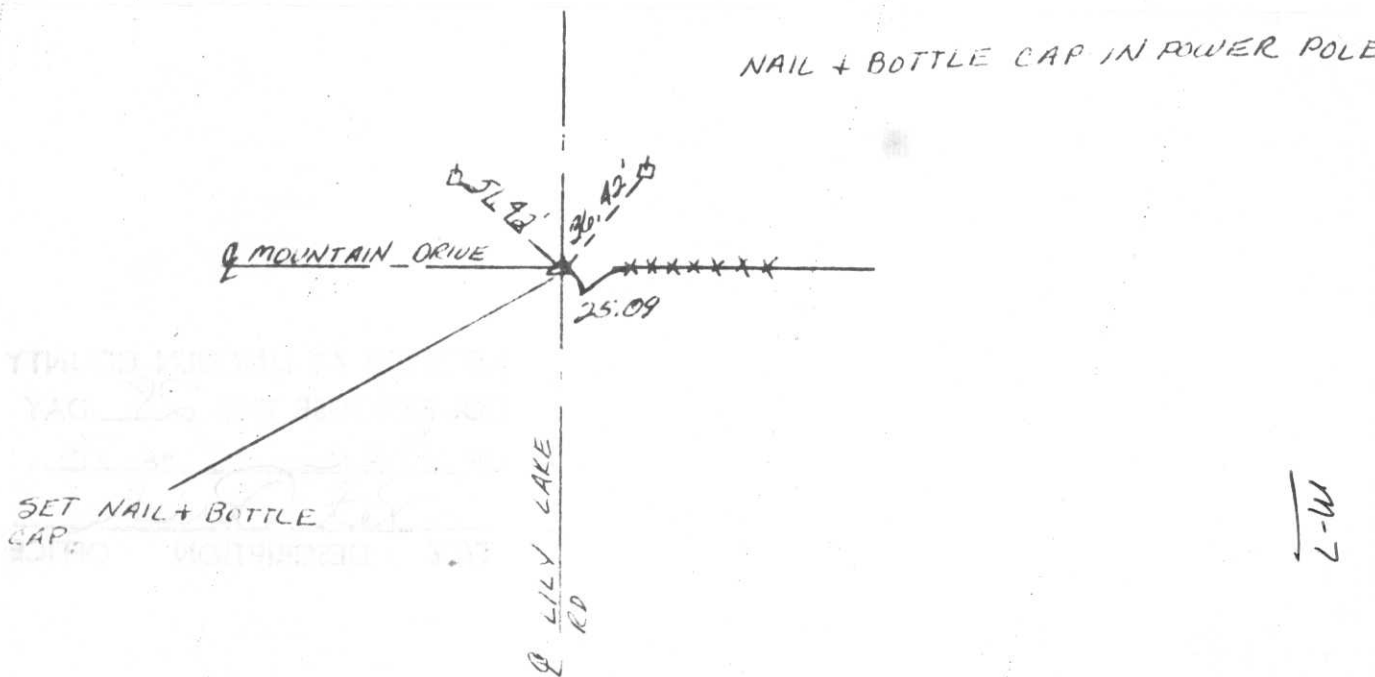
FOUND
 SET
 RE-SET
 RE-TIED

CORNER IDENTITY NAIL + BOTTLE CAP
 DATE OF SURVEY DEC. 6 1976
 WEATHER CLEAR + COLD
 TEMPERATURE 5° ±
 SURVEY PARTY D. FLUSTY M. HENRICHS
F. STOLTENBERG



BASIS FOR MONUMENT LOCATION
 DESCRIBE METHOD OF SURVEY AND CORNER AUTHENTICATION

TIE SKETCH SHOW HORIZONTAL TIE DISTANCES TO FIXED WITNESS MONUMENTS. DESCRIBE ALL MONUMENTS FOUND OR SET.





1 1:17 PM



1 1:19 PM



1 1:17 PM



1 1:19PM