

U S PUBLIC LAND SURVEY MONUMENT RECORD

NOTE: This form is intended and designed to fulfill all requirements of Wisconsin Administrative Code, Chapter A-E 7.08 U.S. Public Land Survey Monument Record (3) (a-i)

A-E 7.08(3)(a) Identity of corner:
 SOUTHEAST CORNER SECTION 10,
 TOWNSHIP 35 NORTH,
 RANGE 07 EAST OF THE 4TH PM,
 TOWN OF KING,
 COUNTY OF LINCOLN

WISCRS - LINCOLN COUNTY
 N: 248,146.113 USft (248,145.657)
 E: 417,895.599 USft (417,896.217)
 Datum: NAD83 (2011)
 GNSS Method RTN - Direct
 GNSS Control WISCORS VRS



The coordinate value shown has been verified by the average of two or more GPS observations at a markedly different time. Coordinates shown in parenthesis are provided by Lincoln County.

A-E 7.08(3)(b)

Original Surveyor: Alfred Millard

Date of Original Survey Commenced: June 24, 1861
 Completed: July 10, 1861

Original Accessories:
 Tamarac 8 N 15° E 76 links
 Tamarac 8 S 44° W 55 links

1960 - Surveyor 1418 - William H. Stuth - indicates this position as "by others" on O & I map, Lincoln County Index E-I : 13-17.

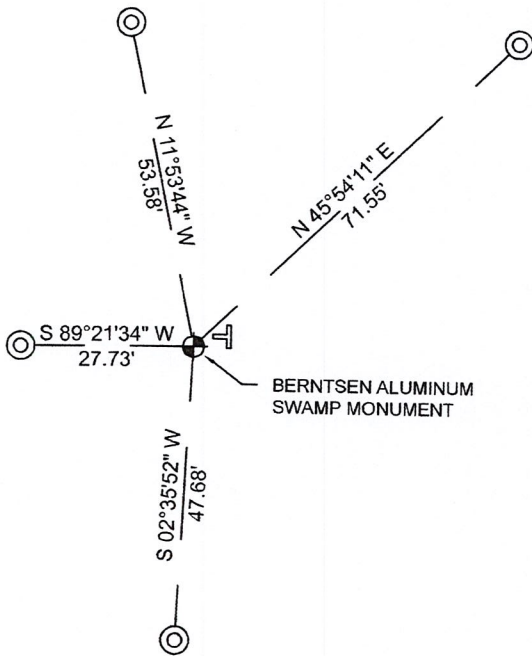
March - April, 1968 - Surveyor 836 - John Fisher - indicates this position as "iron pipe, with 1 bearing tree - 4" spruce, N81°W, 53.0" on Lincoln County map L305A.

December 20, 2004 Surveyor 1170 - Stuart L. Foltz - indicates this position as "computed point" on Lincoln County map L390A.

December 19, 2003 - Surveyor 2656 - Jeffrey L. DeMuth - indicates this position as "set Lincoln County monument, N 248145.66 E 417896.22" on Lincoln County Section Summary - Section 10, Township 35 North, Range 7 East, Lincoln County Index E-I : 13-17.

November 30, 2022 - While performing the 2022 Lincoln County PLSS Corner Remonumentation and GPS Services project, I went to the coordinate position provided by Lincoln County, I made a careful search of the area and found 1" diameter iron pipe near the computed position provided by Lincoln County. I replaced the pipe with a Berntsen aluminum "swamp monument" being a 1" diameter x 50" long aluminum pipe with a 2.5" diameter aluminum cap. I established 4 new reference monuments as shown below.

A-E 7.08(3)(c)(d) Plan view of corner with references to at least 4 witness monuments.



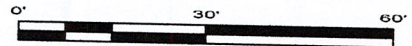
BEARINGS LISTED TO THE NEAREST SECOND ARE REFERENCED TO WISCONSIN COUNTY COORDINATE REFERENCE SYSTEM - LINCOLN COUNTY ZONE. ALL OTHER BEARINGS ARE MAGNETIC



RECEIVED BY LINCOLN COUNTY SURVEYOR THIS 27TH DAY OF December 20 22
Jeffrey DeMuth
 COUNTY SURVEYOR

LEGEND

- 1" diameter x 50" long aluminum pipe monument with a 2.5" diameter aluminum cap, set
- 7/8" diameter X 30" long - iron rod with 2" diameter aluminum cap, set
- Vinyl T-post, found ±0.75 feet NE of corner



A-E 7.08(3)(e) 1861 Surveyor set a post, 1960 Surveyor had something, 1968 Surveyor had a iron pipe, 2004 Surveyor had a computed position 2003 surveyor "set" a Lincoln County monument. I found a 1" diameter iron pipe and replaced it with a Berntsen aluminum monument.

A-E 7.08(3)(f) I accept this monument as a FOUND PERPETUATED LOCATION of the corner.

A-E 7.08(3)(g)(h) This corner was not determined through lost-corner-proportionate methods.

A-E 7.08(3)(i) I, Jeffrey L. DeMuth, Professional Land Surveyor No. S-2656, hereby certify that the corner location on this record was determined by the Lincoln County Surveyor, and the monuments found or set as shown hereon were measured by me or under my direction and control, and that this U.S. Public Land Survey Monument Record is correct and complete to the best of my knowledge, and belief.

SIGNATURE

December 14, 2022

DATE



11-17

REPORT

2022-Lincoln County PLSS Corner Remonumentation and GPS Services

Wisconsin Corner Point Identification Number: 43507100000

Surveyor: Jeffrey L. DeMuth – S2656

Corner monument: Replaced a 1" diameter x 48" long iron pipe with a Berntsen aluminum "swamp monument", 1" diameter x 50" long with a 2.5" diameter cap .

Field Book: Cardinal North – Lincoln Co. Remon. – 2022-00

Page: 71

Horizontal Datum: WisCRS – Lincoln County Zone – NAD83(2011)

Date / time of initial measurement:

November 30, 2022 - Start 11:23:09 CST – End 11:37:56 CST

Reference monuments:

4 – Set - 7/8" diameter X 30" long iron rods with 2" diameter Lincoln Co. aluminum cap.

Coordinate Table

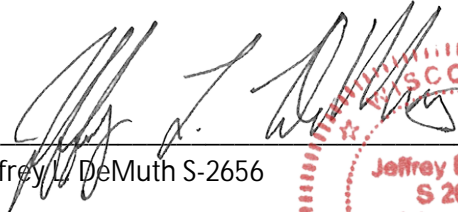
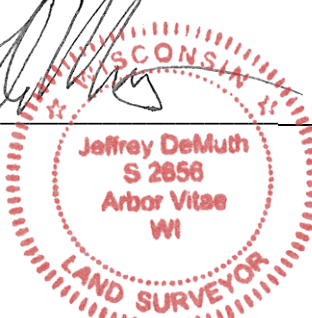
	County Provided	2022 Measurement	Difference
North	248145.657	248146.113	-0.46
East	417896.217	417895.599	0.62

Observed coordinates match with existing coordinates within reason.

Request Data Log for more information.

Additional Notes:

Corner falls in a low wet area.


 Jeffrey L. DeMuth S-2656
 
 December 01, 2022
 Date

4350710000_Mon-N



4350710000_North



4350710000_West



4350710000_South



4350710000_East



FD_43507100000_Mon-N



FD_43507100000_North

PLEASE DO NOT DISTURB
SOUTH RIVER
EVEYR
BY LOCATED
BY NUMBER
BY DATE
PLEASE
CALL
BUREAU OFFICE

43507100000



FD_4350710000_West



S-2056 1/22

WARNING: YOU must read the instructions before use

FD_4350710000_South



FD_43507100000_East

