

U.S. PUBLIC LAND SURVEY MONUMENT RECORD

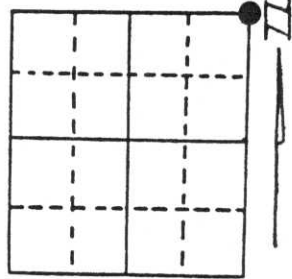
Note: This form is intended and designed to fulfill all requirements of Wisconsin Administrative Code, Chapter A-E 5.02, U.S. Public Land Survey Monument Record (3) (a) (b) (c) (d) (e) (f) (g) (h) (i). An additional sheet may be added if necessary to conform with said requirements.

(a) Corner location: Township 35 North

Range 7 East

Town/City/Village King

County Lincoln



Section 16

(b) (f) (g) (h) Description of monument found at this corner and if it was accepted, state all evidence (material, testimonial, occupational, plats, records, other monuments) used as a basis for accepting. If not accepted or if nothing was found, state evidence used as basis for establishing location. If reestablished through lost corner proportionate methods, indicate all monuments, distances and directions used to establish. Original Gov't. Survey: June 1861 by Alfred Millard, set wood post for corner with bearings, white pine 20 N 20° W 87 links & white pine 22 N 18° E 131 links. I found a 1" iron pipe for the corner with a 5" squared cedar post on the west side of the iron pipe. I also found a rotted jack pine B.T. stump with only the face remaining. The scribing on the face is 17 FT BT. The iron pipe is 17' from the jack pine stump and is S 5° W from the pipe to the stump. I replaced the iron pipe with a Berntsen monument, set the cedar post 1.5' north of the corner and witnessed as shown below.

RECEIVED AT LINCOLN COUNTY

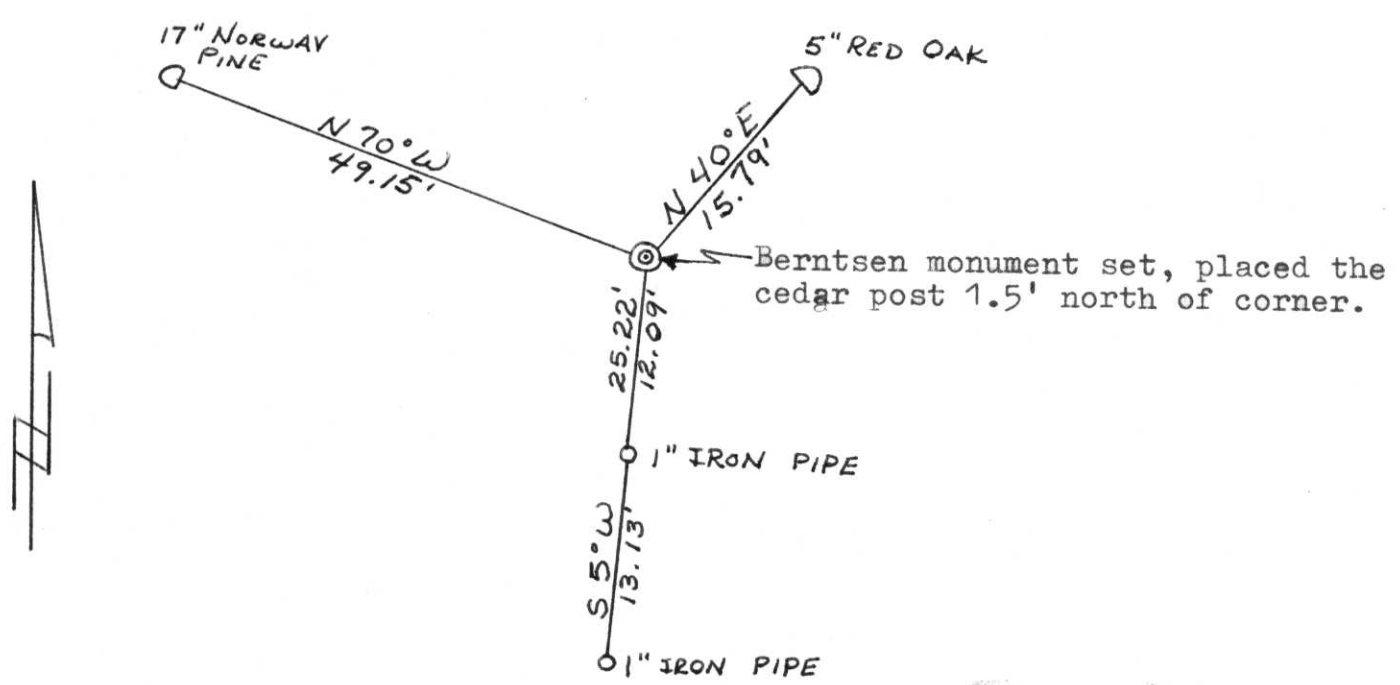
COURTHOUSE THIS 7th DAY

OF June 1994

Pat Priebe

TAX DESCRIPTION OFFICE

(c) (d) (e) Plan view of corner with ties to at least 4 witness monuments. If in disagreement with previously established corner, show the distances between the two corners and also indicate the ties to the disputed corner.



(i) I, Lester J. Schmit
 (type or print name) certify that the corner location on this record was determined by me or under my direction and control and that this U.S. Public Land Survey Monument Record is correct and complete to the best of my knowledge and belief.

Lester J. Schmit 31 May 94
 Signature Date



Index No. I-13