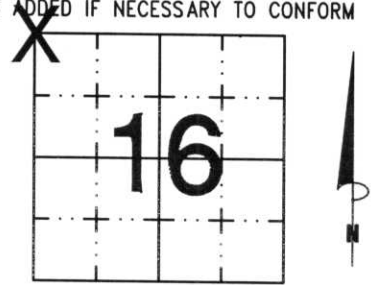


U.S. PUBLIC LAND SURVEY MONUMENT RECORD

NOTE: THIS FORM IS INTENDED AND DESIGNED TO FULFILL ALL REQUIREMENTS OF WISCONSIN ADMINISTRATIVE CODE, CHAPTER A-E 7.08 U.S. PUBLIC LAND SURVEY MONUMENT RECORD (3) (a) (b) (c) (d) (e) (f) (g) (h) (i). AN ADDITIONAL SHEET MAY BE ADDED IF NECESSARY TO CONFORM WITH SAID REQUIREMENTS.

(a) CORNER LOCATION: TOWNSHIP 35 NORTH
 RANGE 7 EAST/WEST
 TOWN/CITY/VILLAGE KING
 COUNTY LINCOLN

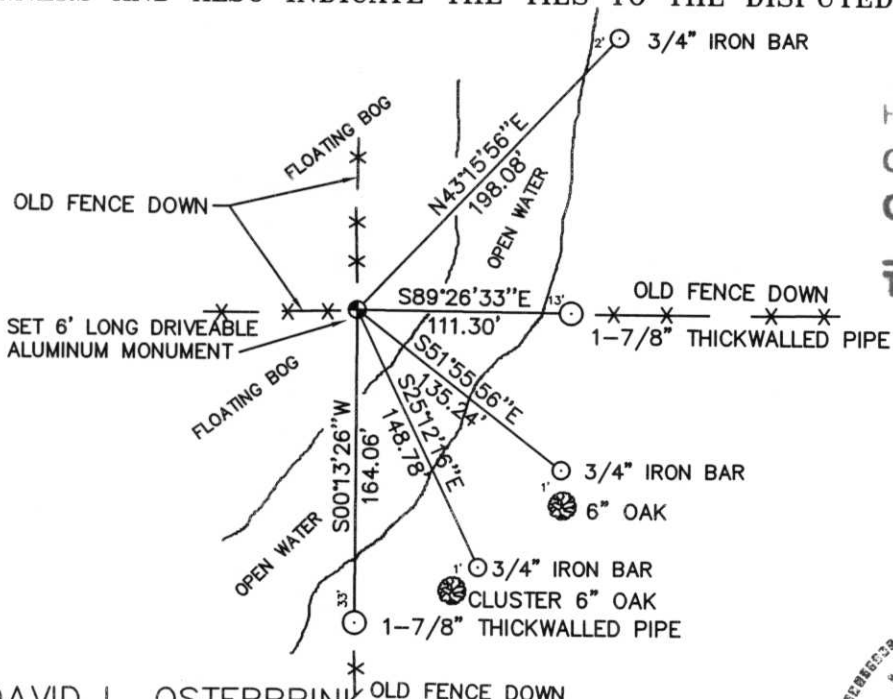


SECTION 16

(b) (f) (g) (h) DESCRIPTION OF MONUMENT FOUND AT THIS CORNER AND IF IT WAS ACCEPTED, STATE ALL EVIDENCE (MATERIAL, TESTIMONIAL, OCCUPATIONAL, PLATS, RECORDS, OTHER MONUMENTS) USED AS BASIS FOR ACCEPTING. IF NOT ACCEPTED OR IF NOTHING WAS FOUND, STATE EVIDENCE USED AS BASIS FOR ESTABLISHING LOCATION. IF REESTABLISHED THROUGH LOST CORNER PROPORTIONATE METHODS, INDICATE ALL MONUMENTS, DISTANCES AND DIRECTIONS USED TO ESTABLISH. INDICATE TYPE OF MONUMENT FOUND OR SET AND SIGN POST.

FOLLOWED OLD FENCE LINES, 1/4 MILE FROM NORTH, 1/4 MILE FROM SOUTH AND 1/4 MILE FROM EAST TO FENCE CORNER ON FLOATING BOG. ORIGINAL NOTES CALL FOR CORNER BEING NORTH 1.5 CHAINS INTO WET MARSH (FROM W 1/4) AND EAST 1.6 CHAINS INTO WET MARSH (FROM N 1/4) DISTANCES CHECKED WELL. HELD FENCE CORNER AS BEST EVIDENCE FOR CORNER. SET 6' LONG, ALUMINUM, DRIVEABLE MONUMENT FOR CORNER. TIED OUT.

(c) (d) (e) PLAN VIEW OF CORNER WITH TIES TO AT LEAST 4 WITNESS MONUMENTS. IF IN DISAGREEMENT WITH PREVIOUSLY ESTABLISHED CORNER, SHOW THE DISTANCES BETWEEN THE TWO CORNERS AND ALSO INDICATE THE TIES TO THE DISPUTED CORNER.



RECEIVED AT LINCOLN COUNTY
 COURTHOUSE THIS 10th DAY
 OF July 1998
Pat Prude
 TAX DESCRIPTION OFFICE

SEE SECTION SUMMARY
 ON BACK.

(i) I, DAVID L. OSTERBRINK
 (TYPE OR PRINT NAME) CERTIFY THAT THE CORNER
 LOCATION ON THIS RECORD WAS DETERMINED BY ME
 OR UNDER MY DIRECTION AND CONTROL AND THAT
 THIS U.S. PUBLIC LAND SURVEY MONUMENT RECORD
 IS CORRECT AND COMPLETE TO THE BEST OF MY
 KNOWLEDGE AND BELIEF.

David L. Osterbrink 7-6-98
 SIGNATURE DATE

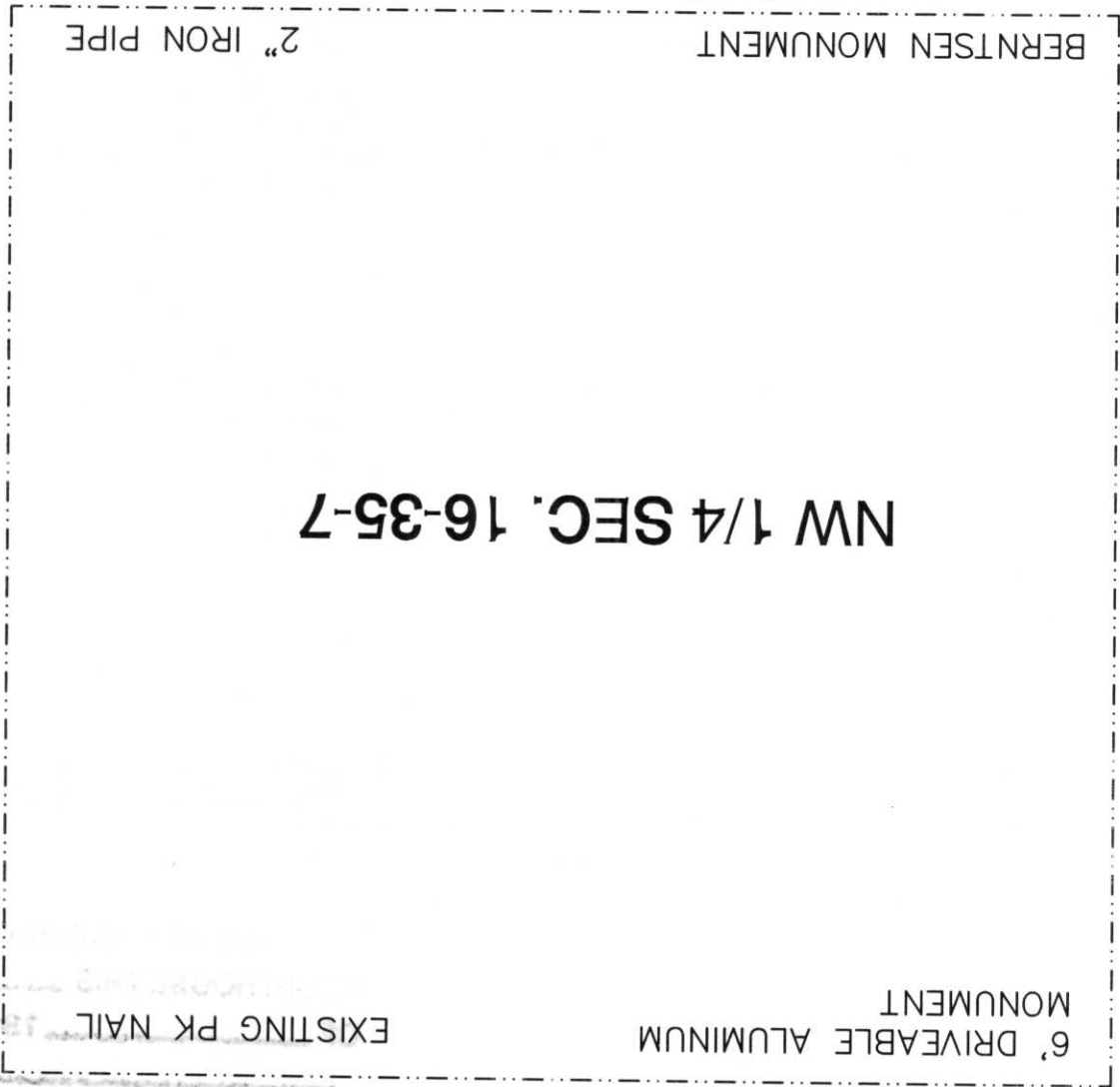


STAMP

INDEX NO. I-9



N89°27'37"W 2738.36'



2" IRON PIPE

BERNTSEN MONUMENT

NW 1/4 SEC. 16-35-7

N0°13'26"E 2644.87'

S1°28'57"E 2645.67'

6' DRIVEABLE ALUMINUM MONUMENT

EXISTING PK NAIL

S89°26'34"E 2659.58'

PK DESCRIPTION PLACE



5