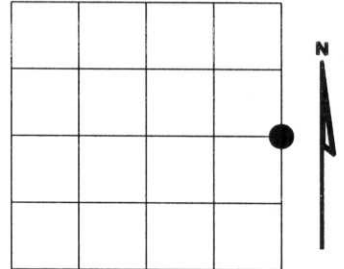


# U.S. PUBLIC LAND SURVEY MONUMENT RECORD

NOTE: This form is intended and designed to fulfill all requirements of Wisconsin Administrative Code, Chapter A-E 7.08 U.S. Public Land Survey Monument Record (S)(a)(b)(c)(d)(e)(f)(g)(h)(i). An additional sheet may be added if necessary to conform with said requirements.

(a) Corner location: Township 35 North  
 Range 07 East  
 Town of KING  
 LINCOLN County, Wisconsin



Section 11

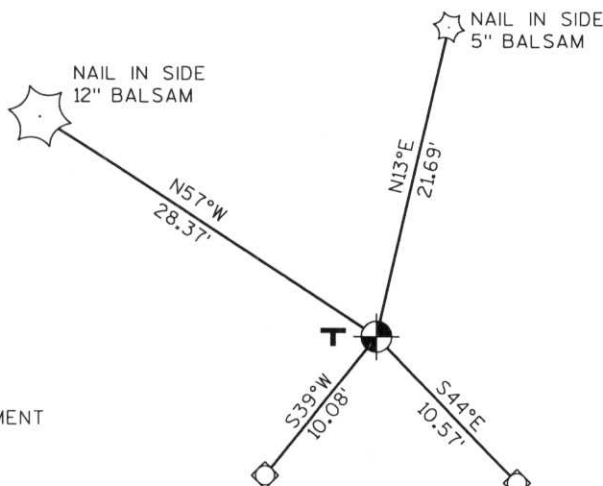
(b)(f)(g)(h) Description of monument found at this corner and if it was accepted, state all evidence (material, testimonial, occupational, plats, records, other monuments) used as a basis for accepting. If not accepted or if nothing was found, state evidence used as basis for establishing location. If reestablished through lost corner proportionate methods, indicate all monuments, distances and directions used to establish. Indicate type of monument found or set and sign post.

- 1861 - Original corner set by Alfred Millard
- 1949- F.R. Wincentzen and J.M. Abernathy set 5" x 5" post,  
 Tamarack 13" N04°E 197.5'
- 1980- Bill Stuth, Owens - Illinois shows post  
 Bts: 6" Balsam N08°W 21.4'  
 6" W. Birch N84°E 23.7'
- 2003- I found sq. post standing and old post lying down  
 Old BT:  
 Replaced with 1" dia. Lincoln County Bernsten monument,  
 stamped to identify corner.

Witnessed as shown below.

(c)(d)(e) Plan view of corner with ties to at least 4 witness monuments. If in disagreement with previously established corner, show the distances between the two corners and also indicate the ties to the disputed corner.

RECEIVED AT LINCOLN COUNTY  
 COURTHOUSE THIS 11<sup>TH</sup> DAY  
 OF June 20 03  
Tomy Dalt  
 LAND INFORMATION OFFICE



- SET LINCOLN COUNTY BERNSTEN MONUMENT
- SET 3/4" DIA. ROD WITH ALUMINUM CAP
- PLASTIC "T" SIGN POST WEST 1'

(i) I, Dennis Roberts, Registered Land Surveyor #S-1863, hereby certify that the corner location on this record was determined by me or under my direction and control and that this U.S. Public Land Survey Monument Record is correct and complete to the best of my knowledge and belief.

Dennis B. Roberts  
 Signature

5/29/03  
 Date



Index No. 6-21  
 \*\*\*\*\*



THE  
SURVEY  
MARKER  
D-11 KING





