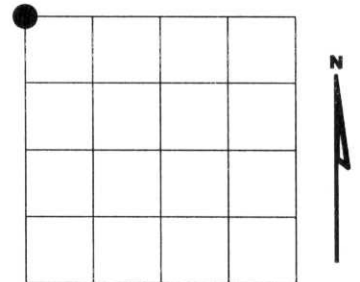


# U.S. PUBLIC LAND SURVEY MONUMENT RECORD

NOTE: This form is intended and designed to fulfill all requirements of Wisconsin Administrative Code, Chapter A-E 7.08 U.S. Public Land Survey Monument Record (3)(a)(b)(c)(d)(e)(f)(g)(h)(i). An additional sheet may be added if necessary to conform with said requirements.

(a) Corner location: Township 35 North  
 Range 08 East  
 Town of HARRISON  
 LINCOLN County, Wisconsin



Section 07

(b)(f)(g)(h) Description of monument found at this corner and if it was accepted, state all evidence (material, testimonial, occupational, plats, records, other monuments) used as a basis for accepting. If not accepted or if nothing was found, state evidence used as basis for establishing location. If reestablished through lost corner proportionate methods, indicate all monuments, distances and directions used to establish. Indicate type of monument found or set and sign post.

1860 - Original corner set by Alfred Millard

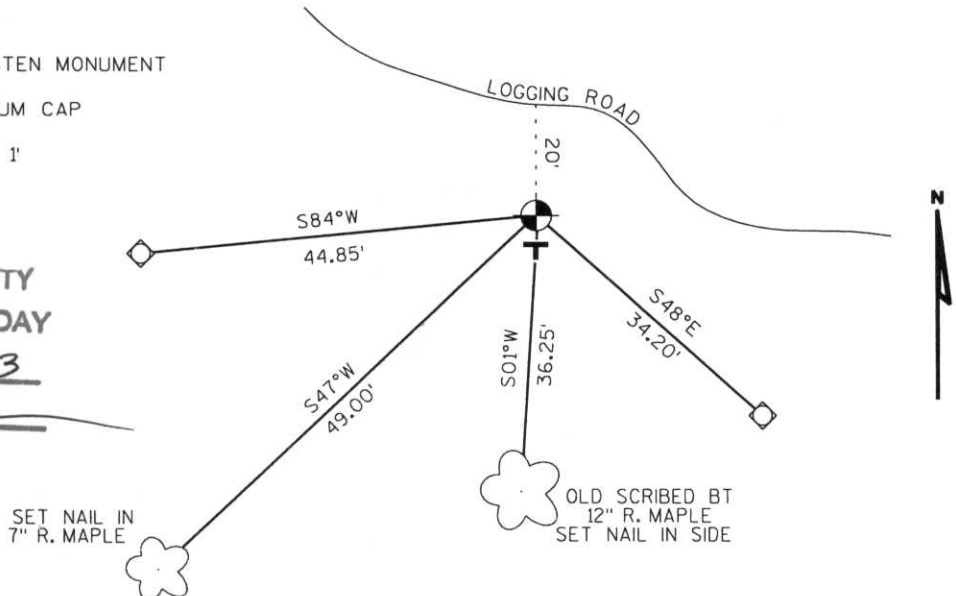
2003- I found a 4" dia. Aluminum Lincoln County Bernsten monument in mound of stone. 2" dia. iron pipe NW 1'.  
 Found stump 12" Maple(scribing shown)  
 S47°E 25.5'

Witnessed corner as shown below.

(c)(d)(e) Plan view of corner with ties to at least 4 witness monuments. If in disagreement with previously established corner, show the distances between the two corners and also indicate the ties to the disputed corner.

- FOUND LINCOLN COUNTY BERNSTEN MONUMENT
- SET 3/4" DIA. ROD WITH ALUMINUM CAP
- PLASTIC "T" SIGN POST SOUTH 1'

RECEIVED AT LINCOLN COUNTY  
 COURTHOUSE THIS 11<sup>TH</sup> DAY  
 OF June 20 03  
*Tommy Dalko*  
 LAND INFORMATION OFFICE



(i) I, Dennis Roberts, Registered Land Surveyor #S-1863, hereby certify that the corner location on this record was determined by me or under my direction and control and that this U.S. Public Land Survey Monument Record is correct and complete to the best of my knowledge and belief.



Index No. \*\*\*\*\* E-1

*Dennis B. Roberts*  
 Signature Date 5/29/03

# U.S. PUBLIC LAND SURVEY MONUMENT RECORD

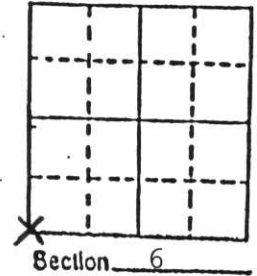
**Note:** This form is intended and designed to fulfill all requirements of Wisconsin Administrative Code, Chapter A-E 5.02, U.S. Public Land Survey Monument Record (3) (a) (b) (c) (d) (e) (f) (g) (h) (i). An additional sheet may be added if necessary to conform with said requirements.

(a) Corner location: Township 35 North

Range 7 - 8 East

Town Harrison

County Lincoln



b) (f) (g) (h) Description of monument found at this corner and if it was accepted, state all evidence (material, testimonial, occupational, plats, records, other monuments) used as a basis for accepting. If not accepted or if nothing was found, state evidence used as basis for establishing location. If reestablished through lost corner proportionate methods, indicate all monuments, distances and directions used to establish.

August 1860, Alfred Millard set post for section corner to sections 1, 6, 7 and 12:

- 9" White Birch, N64°E, 11 links (7.26')
- 9" White Pine, N31°W, 38 links (25.08')
- 10" White Birch, S75°W, 27 links (17.82')
- 8" White Birch, S16°E, 32 links (21.12')

1949 Genisot Engineering of Rhinelander, WI used this position to subdivide section 1 to the West.

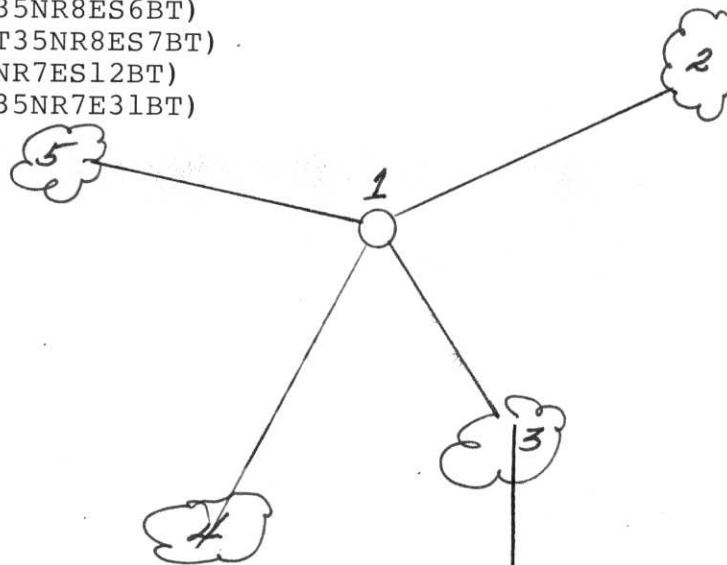
April 6, 1988 Milo E. Stefan position marked by a 1 1/2" x 18" solid steel rod with ring around top in mound of stone. WCD location poster with dates to 1939.

I accept this iron rod as the perpetuated corner position and restore same with a Lincoln County Monument.

c) (d) (e) Plan view of corner with ties to at least 4 witness monuments. If in disagreement with previously established corner, show the distances between the two corners and also indicate the ties to the disputed corner.

1. Cast aluminum monument with embossed screw on cap, Lincoln County in mound of earth and stone.
2. 7" White Birch, N75°E, 44.67 feet (T35NR8ES6BT)
3. 8" White Birch, S 51°E, 26.12 feet (T35NR8ES7BT)
4. 8" Red Maple, S03°W, 36.25 feet (T35NR7ES12BT)
5. 7" White Birch, N76°W, 40.37 feet (T35NR7E31BT)

Distances to nail in side of trees.  
(Scribed accordingly)



(i) I, Milo E. Stefan

(Type or print name) certify that the corner location on this record was determined by me or under my direction and control and that this U.S. Public Land Survey Monument Record is correct and complete to the best of my knowledge and belief.

*Milo E. Stefan*

4/27/88

Signature

Date



Index No. E-1



c1