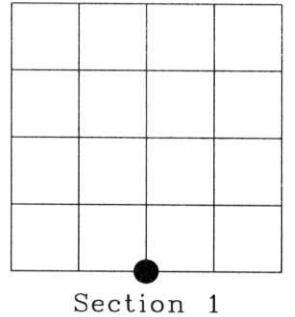


# U.S. PUBLIC LAND SURVEY MONUMENT RECORD

NOTE: This form is intended and designed to fulfill all requirements of Wisconsin Administrative Code, Chapter A-E 7.08 U.S. Public Land Survey Monument Record (3)(a)(b)(c)(d)(e)(f)(g)(h)(i). An additional sheet may be added if necessary to conform with said requirements.

(a) Corner location: Township 35 North  
 Range 07 East  
 Town of KING  
 LINCOLN County, Wisconsin

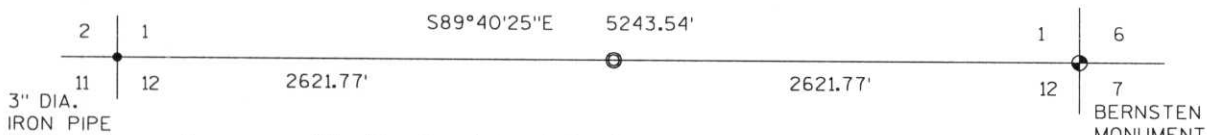


Section 1

(b)(f)(g)(h) Description of monument found at this corner and if it was accepted, state all evidence (material, testimonial, occupational, plats, records, other monuments) used as a basis for accepting. If not accepted or if nothing was found, state evidence used as basis for establishing location. If reestablished through lost corner proportionate methods, indicate all monuments, distances and directions used to establish. Indicate type of monument found or set and sign post.

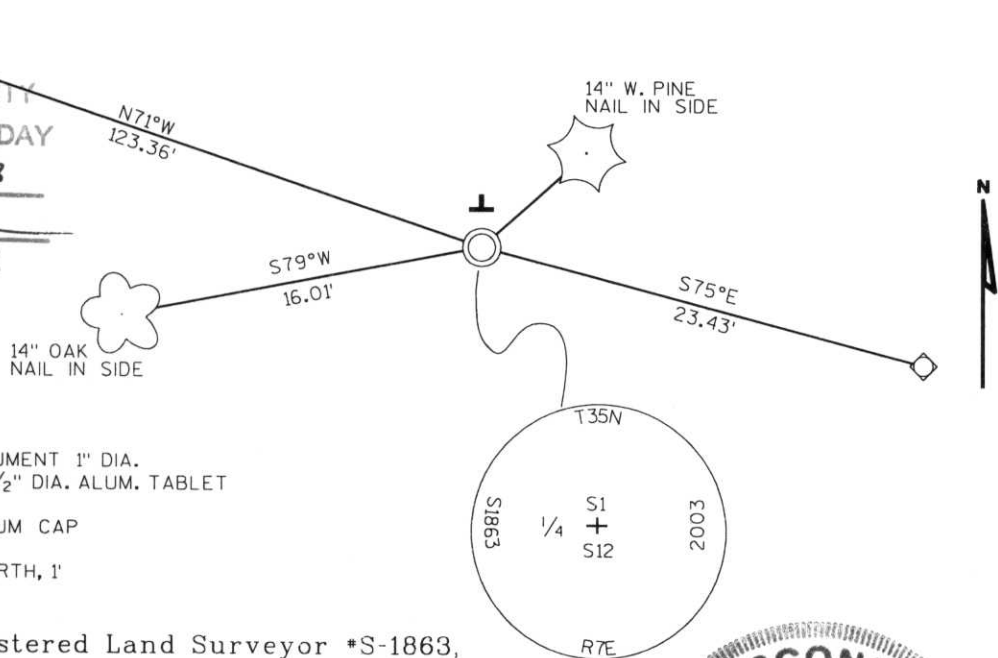
- 1861 - Original corner set by Alfred Millard
- 1949 - F.R. Wincentzen and J.M. Abernathy set 5"x5" post by proportionate method.
- 1950 - WPS Corp notes shows MC on East side of river and a 5"x5" post a 1/4
- 1961 & 1980 - Bill Stuth's notes shows a post at 1/4 corner
- 2003 - I find no evidence of corner, set by proportionate methods. Set Lincoln Co. 1" dia. 30" long alum. pipe with 2 1/2" dia. alum. tablet.

Witnessed corner as shown below.



(c)(d)(e) Plan view of corner with ties to at least 4 witness monuments. If in disagreement with previously established corner, show the distances between the two corners and also indicate the ties to the disputed corner.

RECEIVED AT LINCOLN COUNTY  
 COURTHOUSE THIS 25<sup>TH</sup> DAY  
 OF November 20 03  
*[Signature]*  
 LAND INFORMATION OFFICE



- SET LINCOLN COUNTY MONUMENT 1" DIA. 5'-LONG ALUM. PIPE WITH 2 1/2" DIA. ALUM. TABLET
- ◇ SET 3/4" ROD WITH ALUMINUM CAP
- T PLASTIC "T" SIGN POST NORTH, 1'

(i) I, Dennis Roberts, Registered Land Surveyor \*S-1863, hereby certify that the corner location on this record was determined by me or under my direction and control and that this U.S. Public Land Survey Monument Record is correct and complete to the best of my knowledge and belief.

*[Signature]*  
 Signature

11-04-03  
 Date



Index No. E-23



1/4  
KC 12