

U.S. PUBLIC LAND SURVEY MONUMENT RECORD

Note: This form is intended an designed to fulfill all requirements of Wisconsin Administrative Code. Chapter A-E 7.08 U.S. Public Land Survey Monument Record (3)(a)(b)(c)(d)(e)(f)(g)(h)(i). An additional sheet may be added to if necessary to conform with said requirements.

(a) Corner Location: Township 36 North
Range 7 East

Woodboro Township

Oneida County, Wisconsin

RECEIVED BY LINCOLN COUNTY
SURVEYOR THIS 17TH DAY
OF January 20 18
[Signature]
COUNTY SURVEYOR

(83791) UM-AD

WISCRS (Oneida County)

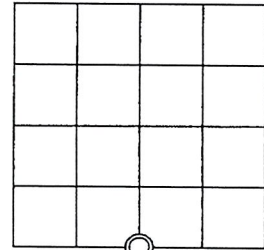
N: 134810.51925 USft

E: 221015.15331 USft

REGISTER OF DEEDS OFFICE
ONEIDA COUNTY
FILED

JUL 11 2017

AT _____ O'CLOCK _____ M
KYLE J. FRANSON
REGISTER OF DEEDS

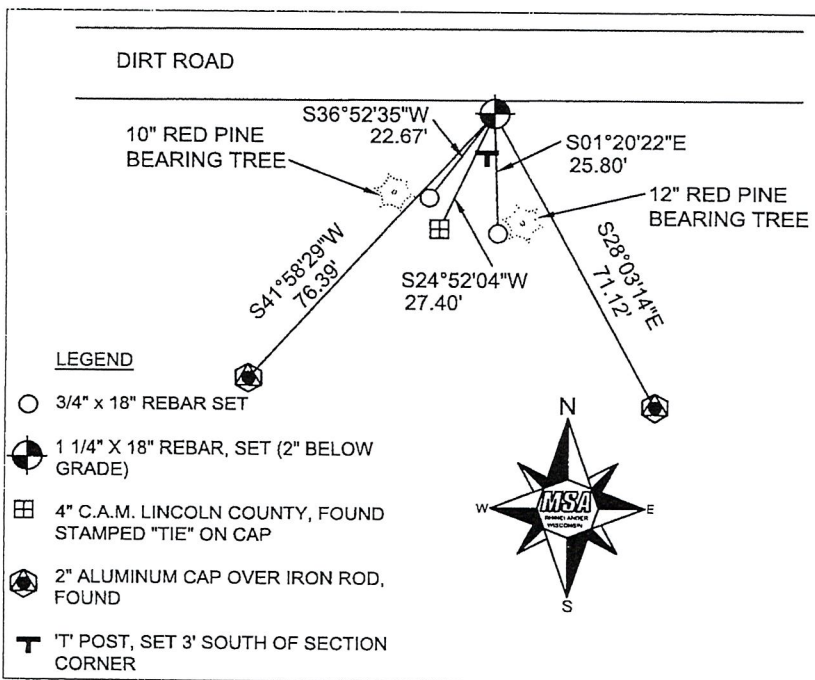


Section 35

(b)(f)(g)(h) Description of monument found at this corner and if it was accepted, state all evidence (material, testimonial, occupational, plats, records, other monuments) used as a basis for accepting. If not accepted or if nothing was found, state evidence used as basis for establishing location. If reestablishment through lost corner proportionate methods, indicate all monuments, distances and directions used to establish. Indicate type of monument found or set and sign post.

Original 1/4 corner set by Alfred Millard in 1860. On October 28, 1891 B.F. Dorr surveyed Section 35, see Old Field Book 22, Page 39, Oneida County Surveyor files. At South 1/4 corner, Dorr referenced "BT.'s lying down". In November, 2003, Dennis Roberts, RLS S-1863 set this corner for Lincoln County Monumentation Project. Dennis noted that he found no evidence of corner and set this corner by proportionate method. He set a Lincoln County Bernsten monument. In November 2006, I found Bernsten Monument set by Dennis. I traversed Section 35 and took measurements to existing evidence. I found called distances by Door agreed well with established corners and existing evidence in Section 35. I previously recalculated the Southeast corner of Section 35 and determined that the South 1/4 corner as set by Dennis Roberts was wrong. At site I could not find any other evidence of corner. I recalculated this 1/4 corners position by single proportionate method. I calculated the 1/4 corners position at straight line, equal distance between the Southeast and Southwest corner of Section 35. I shared this information with the County Surveyors Office. In August, 2009 Michael Oestreich, RLS No. S-2118, used my calculations for this 1/4 corner to do a survey in Section 35. See survey map no. C-2656. Mike had set a 1/2" diameter iron rod at the calculated position. On March 21, 2017, Mike and I revisited this corner. We found 1/2" iron rod in place. Mike verified GPS coordinates. I replaced 1/2" iron rod with a 1 1/4" x 18" iron rod and updated the original ties from Dennis Roberts.

(c)(d)(e) Plan view of corner with ties to at least 4 witness monuments. If in disagreement with previously established corner, show the distances between the two corners and also indicate the ties to the disputed corner.



(i) I, Eugene C. Uttech, Professional Land Surveyor #S-1451, and Michael Oestreich, Professional Land Survey #S-2118, hereby certify that the corner location on this record was determined by me or under my direction and control and that this U.S. Public Land Survey Monument Record is correct and complete to the best of my knowledge and belief.

Index No. 3607350020 (219)

[Signature] 6/28/2017
Signature Date

[Signature] 7/10/17
Signature Date

A-19

U.S. PUBLIC LAND SURVEY MONUMENT RECORD

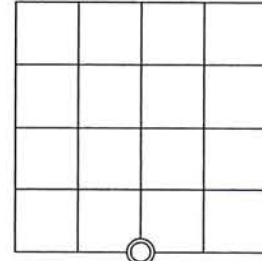
Note: This form is intended an designed to fulfill all requirements of Wisconsin Administrative Code. Chapter A-E 7.08 U.S. Public Land Survey Monument Record (3)(a)(b)(c)(d)(e)(f)(g)(h)(i). An additional sheet may be added to if necessary to conform with said requirements.

(a) Corner Location: Township 36 North
Range 7 East

WISCRS (Oneida County)
N: 134810.51925 USft
E: 221015.15331 USft

Woodboro Township

Oneida County, Wisconsin

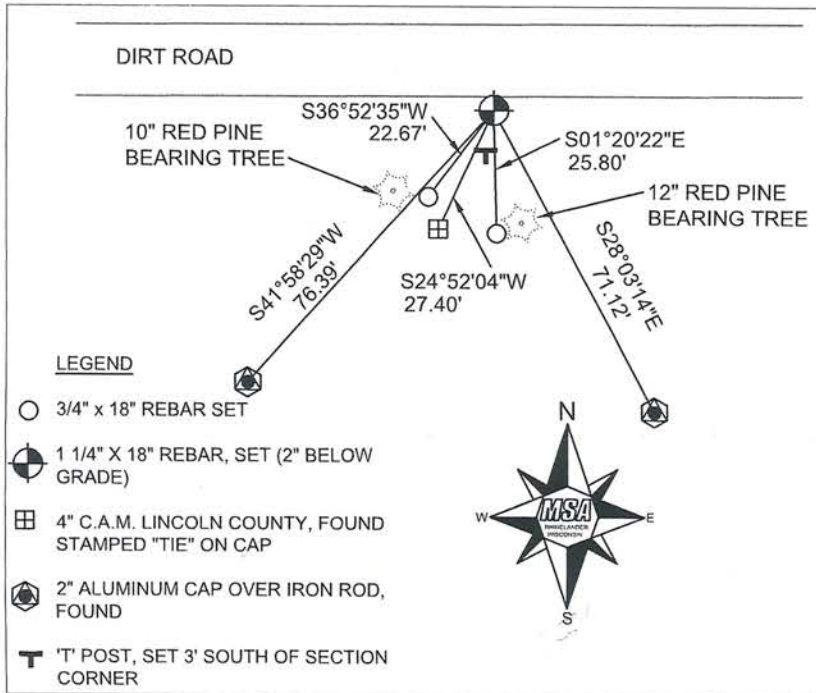


Section 35

(b)(f)(g)(h) Description of monument found at this corner and if it was accepted, state all evidence (material, testimonial, occupational, plats, records, other monuments) used as a basis for accepting. If not accepted or if nothing was found, state evidence used as basis for establishing location. If reestablishment through lost corner proportionate methods, indicate all monuments, distances and directions used to establish. Indicate type of monument found or set and sign post.

Original 1/4 corner set by Alfred Millard in 1860. On October 28, 1891 B.F. Dorr surveyed Section 35, see Old Field Book 22, Page 39, Oneida County Surveyor files. At South 1/4 corner, Dorr referenced "BT.'s lying down". In November, 2003, Dennis Roberts, RLS S-1863 set this corner for Lincoln County Monumentation Project. Dennis noted that he found no evidence of corner and set this corner by proportionate method. He set a Lincoln County Bernsten monument. In November 2006, I found Bernsten Monument set by Dennis. I traversed Section 35 and took measurements to existing evidence. I found called distances by Door agreed well with established corners and existing evidence in Section 35. I previously recalculated the Southeast corner of Section 35 and determined that the South 1/4 corner as set by Dennis Roberts was wrong. At site I could not find any other evidence of corner. I recalculated this 1/4 corners position by single proportionate method. I calculated the 1/4 corners position at straight line, equal distance between the Southeast and Southwest corner of Section 35. I shared this information with the County Surveyors Office. In August, 2009 Michael Oestreich, RLS No. S-2118, used my calculations for this 1/4 corner to do a survey in Section 35. See survey map no. C-2656. Mike had set a 1/2" diameter iron rod at the calculated position. On March 21, 2017, Mike and I revisited this corner. We found 1/2" iron rod in place. Mike verified GPS coordinates. I replaced 1/2" iron rod with a 1 1/4" x 18" iron rod and updated the original ties from Dennis Roberts.

(c)(d)(e) Plan view of corner with ties to at least 4 witness monuments. If in disagreement with previously established corner, show the distances between the two corners and also indicate the ties to the disputed corner.



(i) I, Eugene C. Uttech, Professional Land Surveyor #S-1451, and Michael Oestreich, Professional Land Survey #S-2118, hereby certify that the corner location on this record was determined by me or under my direction and control and that this U.S. Public Land Survey Monument Record is correct and complete to the best of my knowledge and belief.

RECEIVED BY LINCOLN COUNTY
SURVEYOR THIS 12TH DAY
OF July 20 17
Tommy Dalk
COUNTY SURVEYOR

Index No. 3607350020

A-19

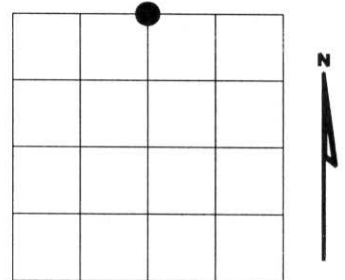
Eugene C. Uttech 6/28/2017
Signature Date

Signature Date

U.S. PUBLIC LAND SURVEY MONUMENT RECORD

NOTE: This form is intended and designed to fulfill all requirements of Wisconsin Administrative Code, Chapter A-E 7.08 U.S. Public Land Survey Monument Record (3)(a)(b)(c)(d)(e)(f)(g)(h)(i). An additional sheet may be added if necessary to conform with said requirements.

(a) Corner location: Township 35 North
 Range 07 East
 Town of KING
 LINCOLN County, Wisconsin



Section 2

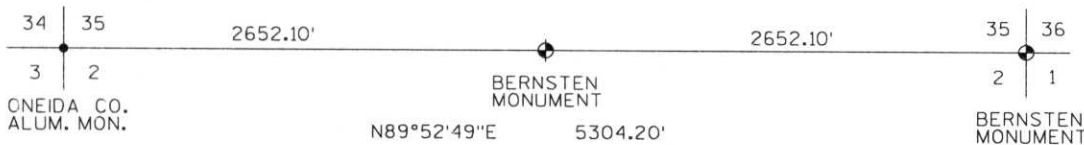
(b)(f)(g)(h) Description of monument found at this corner and if it was accepted, state all evidence (material, testimonial, occupational, plats, records, other monuments) used as a basis for accepting. If not accepted or if nothing was found, state evidence used as basis for establishing location. If reestablished through lost corner proportionate methods, indicate all monuments, distances and directions used to establish. Indicate type of monument found or set and sign post.

1861 - Original corner set by Alfred Millard

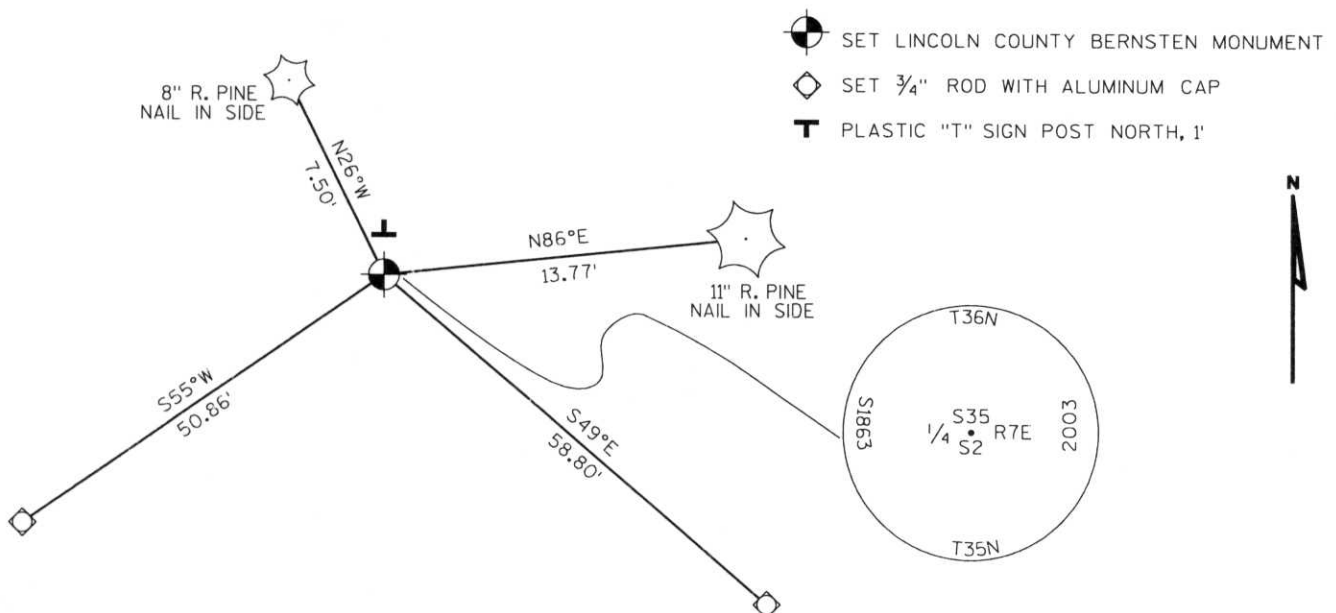
2003 - I find no evidence of corner, set by proportionate method. Set Lincoln Co. Bernstein monument.

RECEIVED AT LINCOLN COUNTY
 COURTHOUSE THIS 25TH DAY
 OF November 20 03
Tony Dell
 LAND INFORMATION OFFICE

Witnessed as shown below.



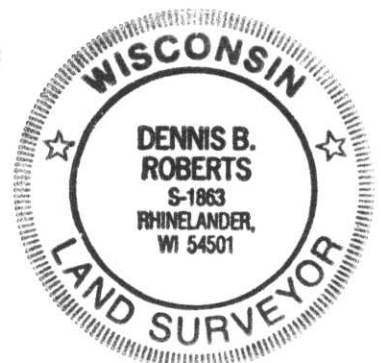
(c)(d)(e) Plan view of corner with ties to at least 4 witness monuments. If in disagreement with previously established corner, show the distances between the two corners and also indicate the ties to the disputed corner.



(i) I, Dennis Roberts, Registered Land Surveyor *S-1863, hereby certify that the corner location on this record was determined by me or under my direction and control and that this U.S. Public Land Survey Monument Record is correct and complete to the best of my knowledge and belief.

Dennis B. Roberts
 Signature

11-04-03
 Date



Index No. A-17

KA 10