

U.S. PUBLIC LAND SURVEY MONUMENT RECORD

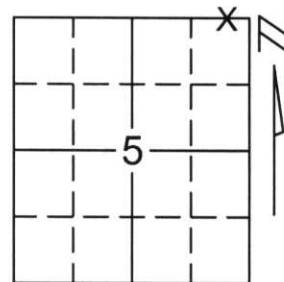
Note: This form is intended and designed to fulfill all requirements of Wisconsin Administrative Code, Chapter A-E 5.02, U.S. Public Land Survey Monument Record (3)(a)(b)(c)(d)(e)(f)(g)(h)(i). An additional sheet may be added if necessary to conform with said requirements.

(a) Corner location: Township 34 North

Range 6 East

Town/City/Village BRADLEY

County LINCOLN



Section 5

(b)(f)(g)(h) Description of monument found at this corner and if it was accepted, state all evidence (material, testimonial, occupational, plats, records, other monuments) used as a basis for accepting. If not accepted or if nothing was found, state evidence used as basis for establishing location. If reestablished through lost corner proportionate methods, indicate all monuments, distances and directions used to establish.

THE NORTHEAST CORNER OF SECTION 5 FALLS IN THE RIVER. WE FOUND TWO (2) IRON PIPES ON THE NORTH LINE OF THE NORTHEAST 1/4 OF SECTION 5 AND THREE (3) PIPES ON THE EAST LINE OF THE NORTHEAST 1/4 OF SECTION 5. THESE PIPES APPEARED WITHIN LESTER SCHMIDT'S PLAT OF SURVEY. WE INTERSECTED A LINE FROM THE NORTH 1/4 OF SECTION 5 THROUGH FOUND IRON PIPES ON THE NORTH LINE OF THE NORTHEAST 1/4 AND FROM THE EAST 1/4 CORNER THROUGH THE FOUND IRONS ON THE EAST LINE OF THE NORTHEAST 1/4 CORNER OF SECTION 5.

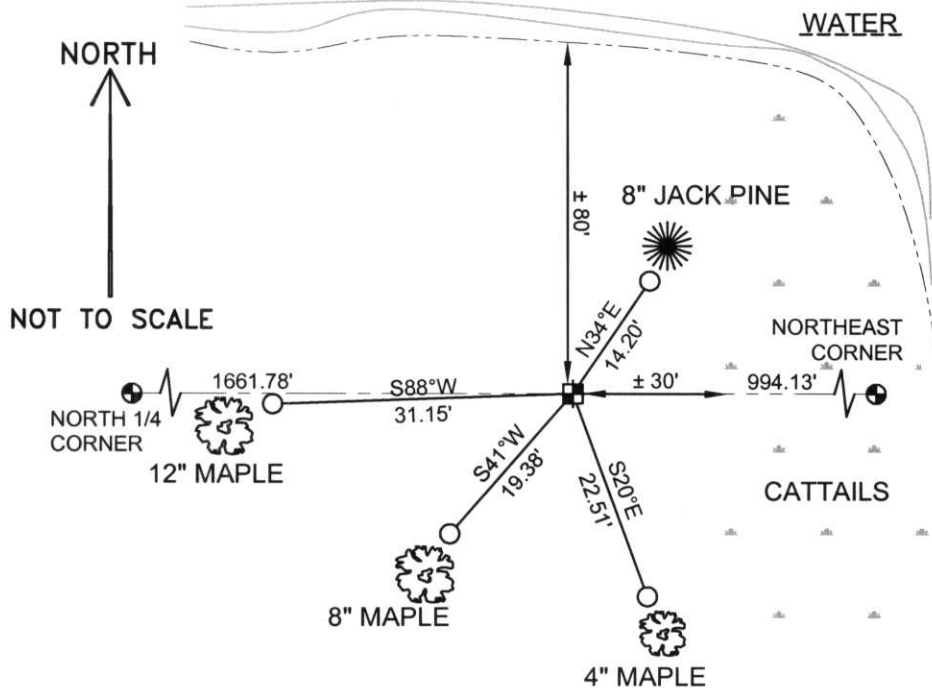
SET A LINCOLN COUNTY MONUMENT FOR THE WEST MEANDER CORNER ON LINE FROM THE NORTH 1/4 CORNER OF SECTION 5 TO THE CALCULATED NORTHWEST CORNER AND TIED OUT CORNER.

(c)(d)(e) Plan view of corner with ties to at least 4 witness monuments. If in disagreement with previously established corner, show the distances between the two corners and also indicate the ties to the disputed corner.

COORDINATES ARE REFERENCED TO THE LINCOLN COUNTY COORDINATE SYSTEM AS DEVELOPED BY THE WISCONSIN DEPARTMENT OF TRANSPORTATION AND WERE DETERMINED BY GPS OBSERVATIONS ON CONTROL POINTS AS SUPPLIED BY LINCOLN COUNTY.

BEARINGS ARE REFERENCED TO MAGNETIC NORTH.

RECEIVED AT LINCOLN COUNTY
COURTHOUSE THIS 9TH DAY
OF January 20 02
Tom Rath
LAND INFORMATION OFFICE



○ - SET 3/4" x 30" REBAR W/ ALUM. CAP
1' FROM BEARING TREE

⊕ - WEST MEANDER CORNER
FOR NE1/4 CORNER
SET LINCOLN COUNTY MOUNMENT

(i) I, Thomas A. Radenz, RLS certify that the corner location on this record was determined by me or under my direction and control and that this U.S. Public Land Survey Monument Record is correct and complete to the best of my knowledge and belief.

Signature

Date



Index No.

A-09