

CERTIFIED LAND CORNER RESTORATION

Index No. M-12,13

State of Wisconsin }  
County of Lincoln } ss.

History of original corner establishment:

Original corner set by Deputy Surveyor Alfred Millard in Oct., 1861.

I Anthony B. Kiedrowski, do hereby  
certify that on the 28th day  
of September, 1976, I found no  
evidence of the Southeast  
corner of Sec. 16-35-6  
Township \_\_\_\_\_, North, Range  
\_\_\_\_\_, Fourth, Principal Meridian,  
as described hereon; and that from this evidence  
I established a new monument and accessories  
as described hereon to perpetuate the original  
location of this corner.

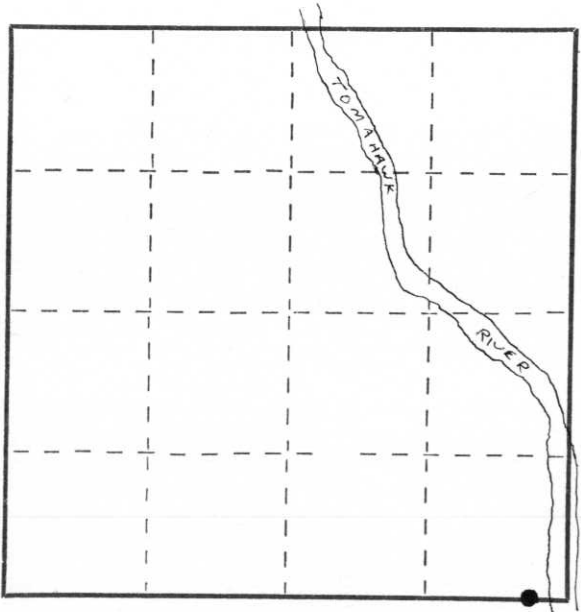
Description of corner evidence found:

This corner set by intersecting the extensions of the south line of the southwest quarter and the east line of the northeast quarters of the section. Since this point falls under water, I set a standard aluminum Berstein monument as a witness corner. Since the section corner was originally set in a marsh, the area is now under water because of the Jersy City Flowage. We took a canoe and searched the area but could find nothing.

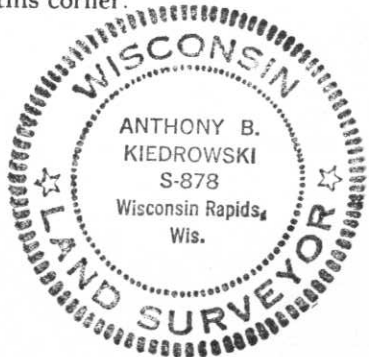
Resident witnesses:  
\_\_\_\_\_  
\_\_\_\_\_  
\_\_\_\_\_

Description of monument and accessories I established to perpetuate the original location of this corner.

See tie sketch on reverse side.



○ = Corner monument restored.



Dated at Wis. Rapids Wis., this 5th day of Oct., 1976

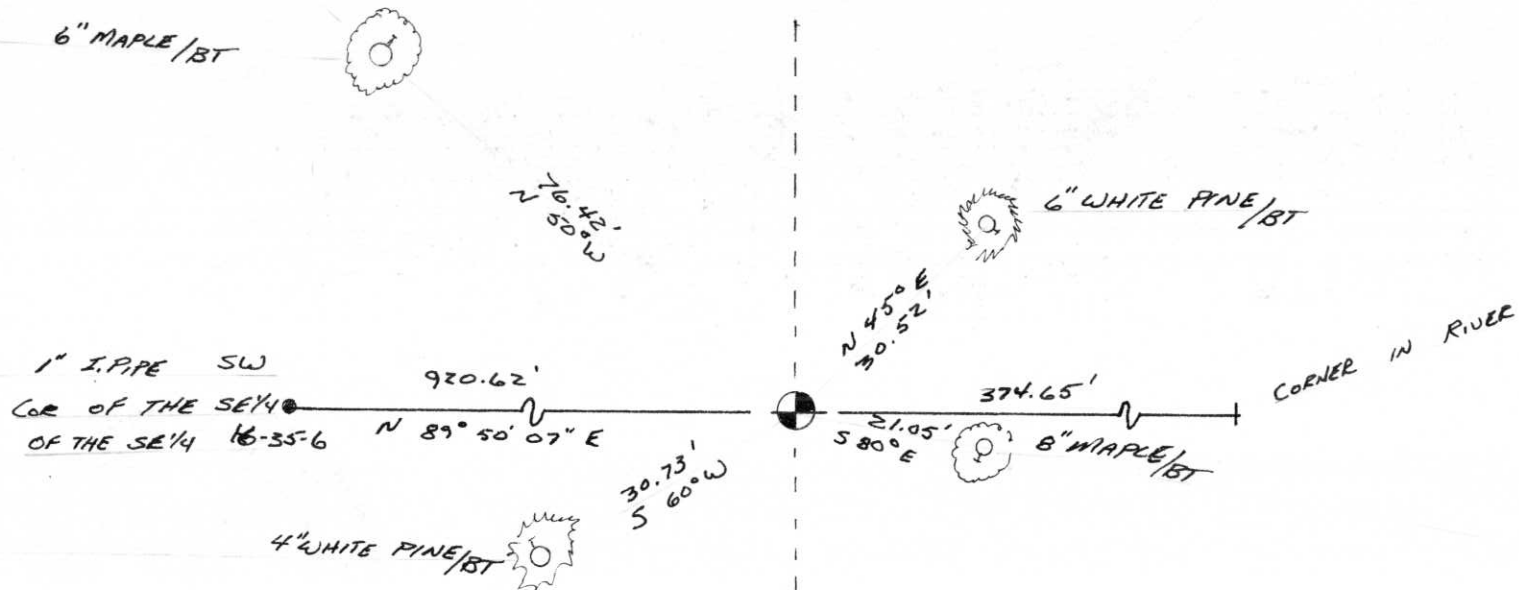
Signature Anthony B. Kiedrowski Title Reg. Land Surveyor Registration No. S-878  
(County Surveyor, Registered Land Surveyor, or other duly authorized official)

Office of Register of Deeds, County of \_\_\_\_\_, I hereby certify that the within  
instrument was filed in this office for record on the \_\_\_\_\_ day of \_\_\_\_\_, 19\_\_\_\_  
at \_\_\_\_\_ o'clock \_\_\_\_\_ M.

\_\_\_\_\_  
(Register of Deeds)

By \_\_\_\_\_ Deputy

WITNESS TO SE CORNER 16-35-6



RECEIVED AT LINCOLN COUNTY  
COURTHOUSE THIS 28<sup>th</sup> DAY  
OF Feb. 19 74.  
TAX DESCRIPTION OFFICE  
Pat O. Pucke