

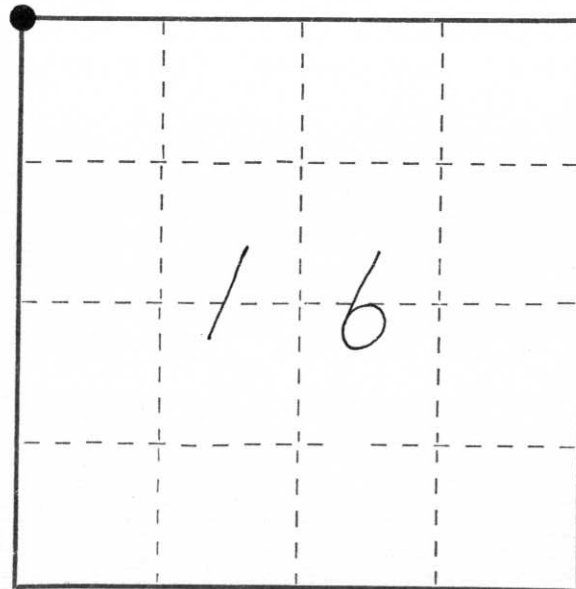
CERTIFIED LAND CORNER RESTORATION

Index No. I-9

State of Wisconsin }
County of Lincoln } ss.

I Anthony B. Kiedrowski, do hereby
certify that on the 28th day
of Sept., 1976, I found
evidence of the northwest
corner of Sec 16-35-6E
Township _____, North, Range
_____, Fourth, Principal Meridian,
as described hereon; and that from this evidence
I established a new monument and accessories
as described hereon to perpetuate the original
location of this corner.

Resident witnesses:



○ = Corner monument restored.

History of original corner establishment:

Original corner set by Deputy Surveyor Alfred Millard, Oct., 1961.

Description of corner evidence found:

Excavated by hand in blacktop road. Found sizable upright pointed stone.
Found railroad spike above it. Left stone in place, filled hole with
fresh blacktop and reset railroad spike. No record of who set stone.
Accepted as correct after an EDM and T-2 traverse of the entire section.

Description of monument and accessories I established to perpetuate the original location of this corner.

See reverse side.



Dated at Wis. Rapids, Wis., this 5th day of Oct, 1976

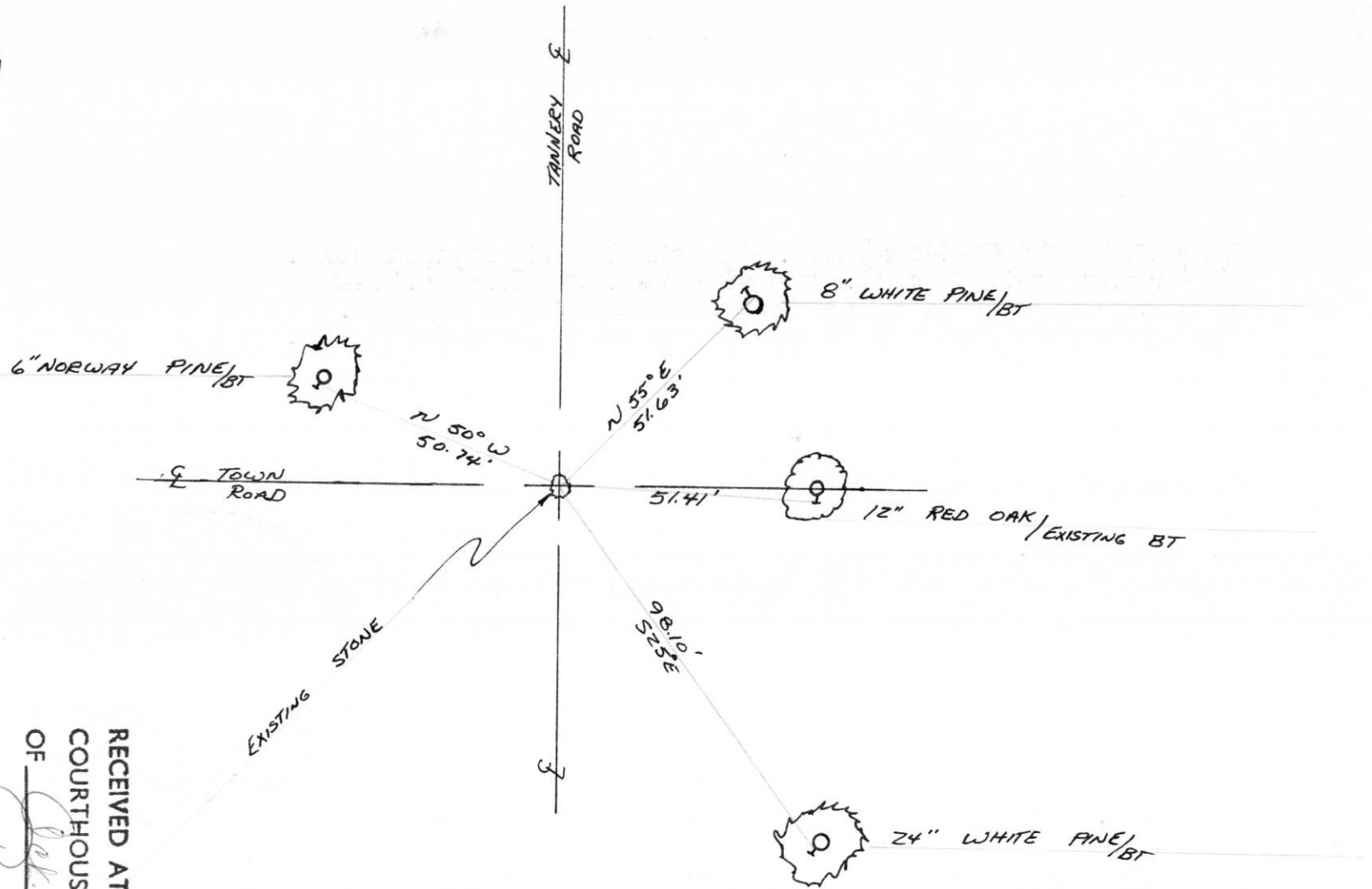
Signature Anthony B. Kiedrowski Title Reg. Land Surveyor Registration No. S-878
(County Surveyor, Registered Land Surveyor, or other duly authorized official)

Office of Register of Deeds, County of _____, I hereby certify that the within
instrument was filed in this office for record on the _____ day of _____, 19____
at _____ o'clock _____ M.

(Register of Deeds)

By _____ Deputy

NW CORNER 16-35-6



EXISTING STONE

RECEIVED AT LINCOLN COUNTY
COURTHOUSE THIS 28th DAY
OF Oct. 1976.
TAX DESCRIPTION OFFICE