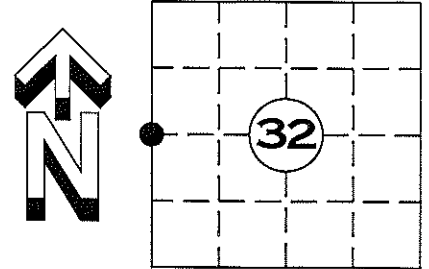


# U.S. PUBLIC LAND SURVEY MONUMENT RECORD

NOTE: THIS FORM IS INTENDED AND DESIGNED TO FULFILL ALL REQUIREMENTS OF WISCONSIN ADMINISTRATIVE CODE CHAPTER A-E 7.08 U.S. PUBLIC LAND SURVEY MONUMENT RECORD (3) (a)(b)(c)(d)(e)(f)(g)(h)(i). AN ADDITIONAL SHEET MAY BE ADDED IF NECESSARY TO CONFIRM WITH SAID REQUIREMENTS.

(a) CORNER LOCATION:  
 WEST QUARTER CORNER  
 SECTION 32, TOWNSHIP 35 NORTH, RANGE 5 EAST  
 TOWN OF WILSON, LINCOLN COUNTY  
 LINCOLN COUNTY COORDINATES:  
 NORTHING: 229888.510  
 EASTING: 338716.172

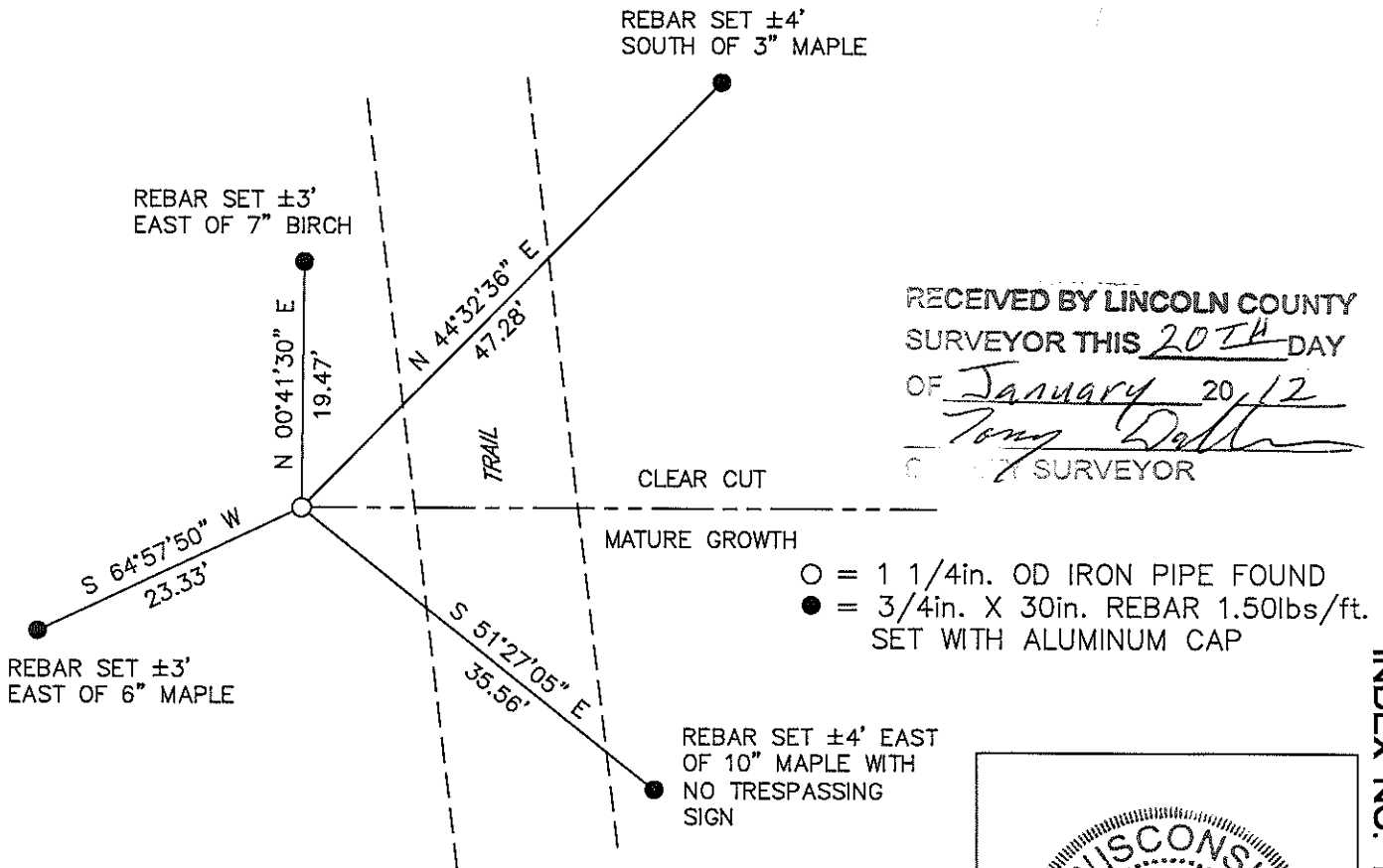


(b) HISTORY OF ORIGINAL CORNER:  
 ORIGINAL SURVEYOR: JOSEPH H. JENKINS SEPT. 1862 – OCT. 1862  
 HEMLOCK 8 N 53° E 19 LINKS  
 MAPLE 6 N 64° W 9 LINKS

(f)(g)(h) DESCRIPTION OF MONUMENT FOUND AT THIS CORNER AND IF IT WAS ACCEPTED STATE ALL EVIDENCE (MATERIAL, TESTIMONIAL, OCCUPATIONAL, PLATS, RECORDS, OTHER MONUMENTS) USED AS A BASIS FOR ESTABLISHING LOCATION. IF REESTABLISHED THROUGH LOST CORNER PROPORTIONATE METHODS, INDICATE ALL MONUMENTS, DISTANCES, AND DIRECTIONS USED TO ESTABLISH. INDICATE TYPE OF MONUMENT AND SIGN POST FOUND OR SET.

16 JANUARY 2012; FOUND A 1 1/4 in. OD IRON PIPE THAT FITS POSSESSION LINES AND LOOKS TO BE THE ACCEPTED CORNER BY ADJACENT OWNERS. ACCEPTED LOCATION AND SET FOUR NEW WITNESS MONUMENTS

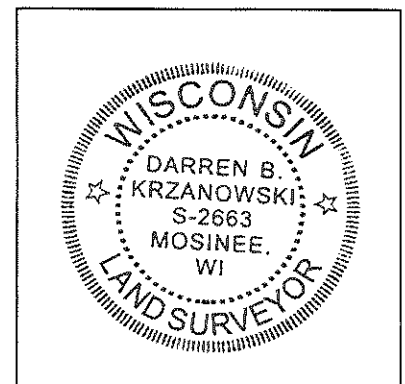
(c)(d)(e) PLAN VIEW OF CORNER WITH TIES TO AT LEAST FOUR WITNESSES. IF IN DISAGREEMENT WITH PREVIOUSLY ESTABLISHED CORNER, SHOW THE DISTANCE BETWEEN THE TWO CORNERS AND ALSO INDICATED THE TIE TO THE DISPUTED CORNER.



RECEIVED BY LINCOLN COUNTY  
 SURVEYOR THIS 20<sup>TH</sup> DAY  
 OF January 20, 12  
*Tony Datta*  
 COUNTY SURVEYOR

I, DARREN B. KRZANOWSKI, REGISTERED LAND SURVEYOR NO. 2663, HEREBY CERTIFY THAT THE CORNER LOCATION ON THIS RECORD WAS REFERENCED BY ME OR UNDER MY DIRECTION AND CONTROL AND THAT THIS U.S. PUBLIC LAND SURVEY MONUMENT RECORD IS COMPLETE TO THE BEST OF MY KNOWLEDGE AND BELIEF.

*Darren Krzanowski*  
 DARREN B. KRZANOWSKI RLS 2663  
 DATED THIS 17TH DAY OF JANUARY, 2012



INDEX NO. T35N R5E W5







