

# U.S. PUBLIC LAND SURVEY MONUMENT RECORD

NOTE: This form is intended and designed to fulfill all requirements of Wisconsin Administrative Code, Chapter A-E 7.08 U.S. Public Land Survey Monument Record. An additional sheet may be added if necessary to conform with said requirements.

**CORNER LOCATION**

Meander Corner along west line of the NW Quarter of Section 31  
Township 35 North, Range 6 East of the 4th P.M.  
Town of Bradley, Lincoln County, Wisconsin

**HISTORY OF ORIGINAL CORNER ESTABLISHMENT**

ORIGINAL SURVEYOR:  
DATE OF SURVEY:  
ORIGINAL ACCESSORIES:

6	5	4	3	2	1
7	8	9	10	11	12
18	17	16	15	14	13
19	20	21	22	23	24
30	29	28	27	26	25
31	32	33	34	35	36

T35N - R6E

DESCRIPTION OF MONUMENT FOUND AT THIS CORNER AND IF IT WAS ACCEPTED, STATE ALL EVIDENCE (MATERIAL, TESTIMONIAL, OCCUPATIONAL, PLATS, RECORDS, OTHER MONUMENTS) USED AS A BASIS FOR ACCEPTING. IF NOT ACCEPTED OR IF NOTHING WAS FOUND, STATE EVIDENCE USED AS BASIS FOR ESTABLISHING LOCATION. IF RE-ESTABLISHED THROUGH LOST CORNER PROPORTIONATE METHODS, INDICATE ALL MONUMENTS, DISTANCES AND DIRECTIONS USED TO ESTABLISH. INDICATE TYPE OF MONUMENT AND SIGN POST FOUND OR SET.

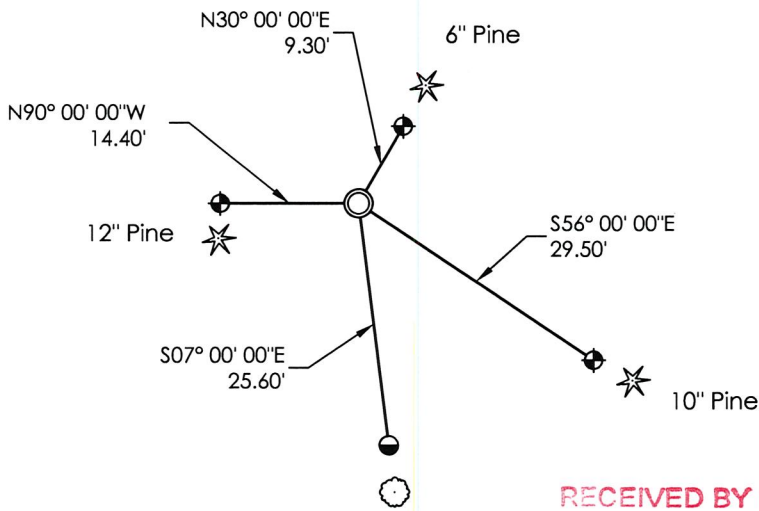
1989 - Lester J. Schmidt set a 2" Iron Pipe as part of Red Cloud Landing Assessor's Plat.

2001 - Thomas A. Radenz found a 2" Iron Pipe. Set a 2" Alum. Cap S 56° E, 29.59'; Set a 2" Alum. Cap N 30° E, 9.29'; Set a 2" Alum. Cap N 90° W, 14.47'; Set a 2" Alum. Cap S 0° E, 26.10'.

9/17/2018 - Visited corner location and found 2" Iron Pipe. The Pipe matched the coordinate location as published by Tom Radenz, REI, on section summary. Accepted as at corner location. Also found three 2" Aluminum Berntsen Monument marked as Lincoln County Witness Corner measured and shown below. Found an additional rebar near location for a recorded Witness Corner per previous Monument record but found it to be disturbed. Set 3/4" rebar as additional accessory to the corner as measured and shown below.

PLAN VIEW OF CORNER WITH TIES TO AT LEAST 4 WITNESS MONUMENTS. IF IN DISAGREEMENT WITH PREVIOUSLY ESTABLISHED CORNER, SHOW THE DISTANCES BETWEEN THE TWO CORNERS AND ALSO INDICATE THE TIES TO THE DISPUTED.

SCALE: 1" = 30'  
Bearings Lincoln County Grid



- Found 2" Iron Pipe Meander Corner
- ★ Found County Berntsen Mon.
- Set 3/4" Rebar

**RECEIVED BY LINCOLN COUNTY SURVEYOR THIS 5<sup>TH</sup> DAY OF October 20 18**  
*Tom Walk*  
**COUNTY SURVEYOR**



I, Emily K. Pierce, Professional Land Surveyor No. S-2728, hereby certify that the corner location on this record was determined by me or under my direction and control and that this U.S. Public Land Survey Monument Record is correct and complete to the best of my knowledge and belief.

*Emily K. Pierce*

Emily K. Pierce, PLS No. S-2728  
STEIGERWALDT LAND SURVEYING, LLC

1-11

# U.S. PUBLIC LAND SURVEY MONUMENT RECORD

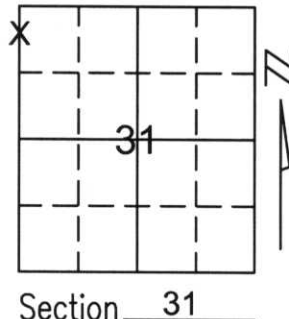
Note: This form is intended and designed to fulfill all requirements of Wisconsin Administrative Code, Chapter A-E 5.02, U.S. Public Land Survey Monument Record (3)(a)(b)(c)(d)(e)(f)(g)(h)(i). An additional sheet may be added if necessary to conform with said requirements.

(a) Corner location: Township 35 North

Range 6 East

Town/City/Village BRADLEY

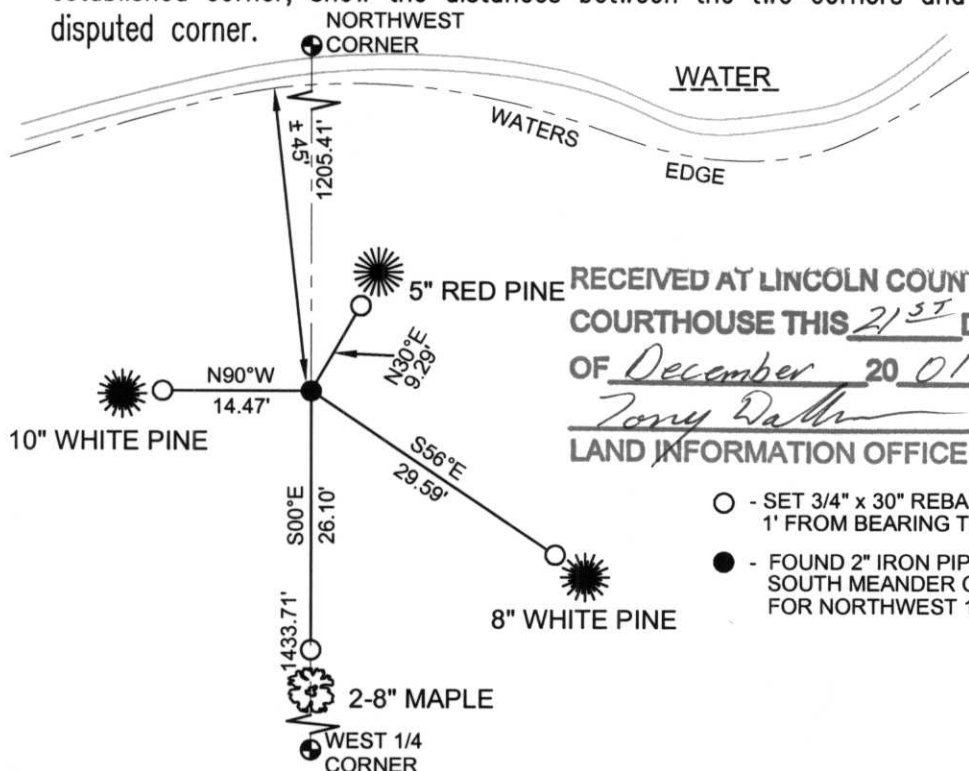
County LINCOLN



(b)(f)(g)(h) Description of monument found at this corner and if it was accepted, state all evidence (material, testimonial, occupational, plats, records, other monuments) used as a basis for accepting. If not accepted or if nothing was found, state evidence used as basis for establishing location. If reestablished through lost corner proportionate methods, indicate all monuments, distances and directions used to establish.

THE NORTHWEST CORNER FALLS IN THE WATER. WE FOUND IRONS ON THE WEST AND SOUTH LINE OF THE SOUTHWEST 1/4 OF SECTION 30 FROM A LESTER SCHMIDT SURVEY AND THE SOUTHWEST CORNER OF THE NORTHWEST 1/4 OF THE NORTHWEST 1/4 ALONG WITH TWO MEANDER CORNERS ON THE WEST LINE OF THE NORTHWEST 1/4 OF SECTION 31, FROM A LESTER SCHMIDT AND STUART FOLTZ SURVEY. WE DID A DISTANCE-DISTANCE INTERSECTION FROM THE FOUND SOUTHWEST CORNER OF THE NORTHWEST 1/4 OF THE NORTHWEST 1/4 OF SECTION 31 AND THE SOUTH 1/4 OF SECTION 30 TO RECREATE THE NORTHWEST CORNER OF SECTION 31. THIS LOCATION FITS ALL FOUND IRONS AND SECTION CORNERS FOR DISTANCE AND LINE. WE HELD THE FOUND 2" IRON FOR SOUTH MEANDER CORNER OF THE NORTHWEST CORNER OF SECTION 31 AND TIED OUT THE 2" IRON PIPE.

(c)(d)(e) Plan view of corner with ties to at least 4 witness monuments. If in disagreement with previously established corner, show the distances between the two corners and also indicate the ties to the disputed corner.

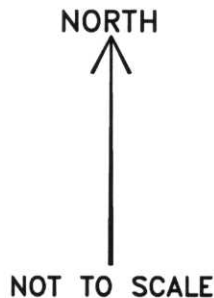


COORDINATES ARE REFERENCED TO THE LINCOLN COUNTY COORDINATE SYSTEM AS DEVELOPED BY THE WISCONSIN DEPARTMENT OF TRANSPORTATION AND WERE DETERMINED BY GPS OBSERVATIONS ON CONTROL POINTS AS SUPPLIED BY LINCOLN COUNTY.

BEARINGS ARE REFERENCED TO MAGNETIC NORTH.

RECEIVED AT LINCOLN COUNTY  
COURTHOUSE THIS 21<sup>ST</sup> DAY  
OF December 20 01  
*Tony Dallen*  
LAND INFORMATION OFFICE

- - SET 3/4" x 30" REBAR W/ ALUM CAP 1' FROM BEARING TREE
- - FOUND 2" IRON PIPE SOUTH MEANDER CORNER FOR NORTHWEST 1/4 CORNER



(i) I, Thomas A. Radenz, RLS certify that the corner location on this record was determined by me or under my direction and control and that this U.S. Public Land Survey Monument Record is correct and complete to the best of my knowledge and belief.

*Thomas A. Radenz*  
\_\_\_\_\_  
Signature

12/21/01  
\_\_\_\_\_  
Date



Index No. 11-2