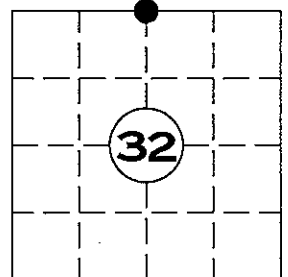


U.S. PUBLIC LAND SURVEY MONUMENT RECORD

NOTE: THIS FORM IS INTENDED AND DESIGNED TO FULFILL ALL REQUIREMENTS OF WISCONSIN ADMINISTRATIVE CODE CHAPTER A-E 7.08 U.S. PUBLIC LAND SURVEY MONUMENT RECORD (3) (a)(b)(c)(d)(e)(f)(g)(h)(i). AN ADDITIONAL SHEET MAY BE ADDED IF NECESSARY TO CONFIRM WITH SAID REQUIREMENTS.

(a) CORNER LOCATION: $N\frac{1}{4}$ CORNER
 SECTION 32 TOWNSHIP 35 NORTH, RANGE 5 EAST
 TOWN OF WILSON, LINCOLN COUNTY
 LINCOLN COUNTY COORDINATES:
 NORTHING: 232525.254
 EASTING: 341261.257

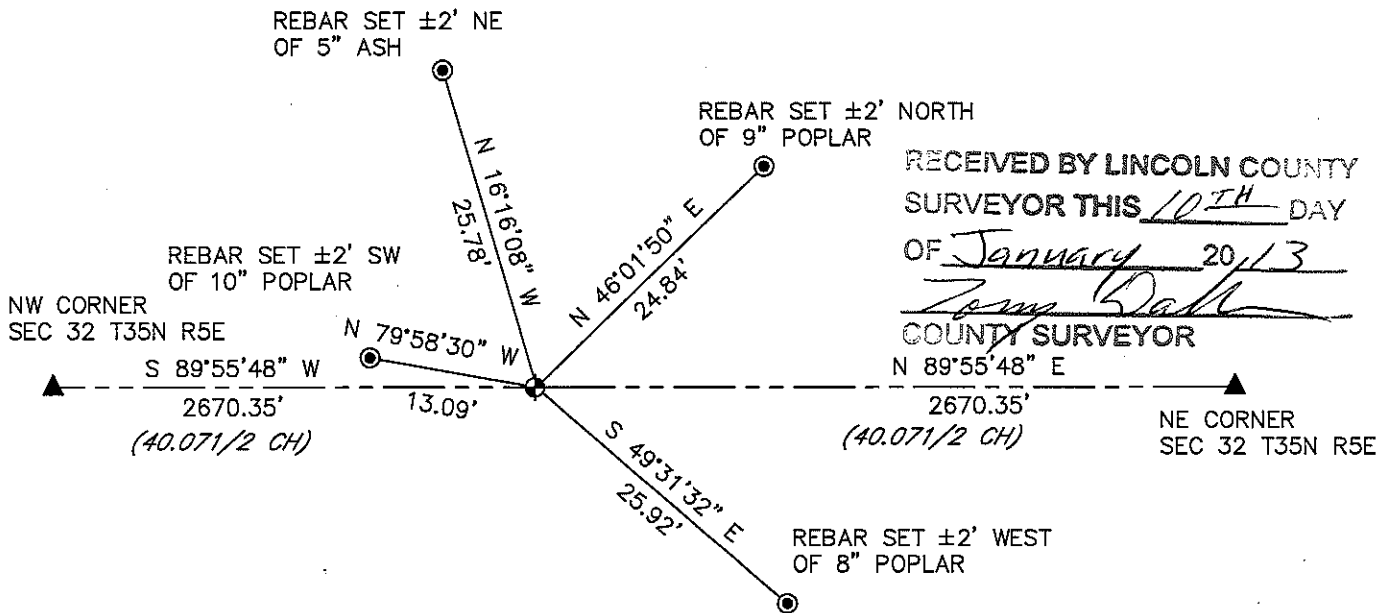


(b) HISTORY OF ORIGINAL CORNER:
 ORIGINAL SURVEYOR:
 JOSEPH H. JENKINS SEPT. 1862 – OCT. 1862
 CEDAR 8 N 37° E 34 LINKS
 CEDAR 7 S 9° W 16 LINKS

(f)(g)(h) DESCRIPTION OF MONUMENT FOUND AT THIS CORNER AND IF IT WAS ACCEPTED STATE ALL EVIDENCE (MATERIAL, TESTIMONIAL, OCCUPATIONAL, PLATS, RECORDS, OTHER MONUMENTS) USED AS A BASIS FOR ESTABLISHING LOCATION. IF REESTABLISHED THROUGH LOST CORNER PROPORTIONATE METHODS, INDICATE ALL MONUMENTS, DISTANCES, AND DIRECTIONS USED TO ESTABLISH. INDICATE TYPE OF MONUMENT AND SIGN POST FOUND OR SET.

5 FEBRUARY 2012: SEARCH OF AREA REVEALED NO EVIDENCE OF SECTION CORNER. SET A LINCOLN COUNTY ALUMINUM CAST MONUMENT BY SINGLE PROPORTIONATE MEASUREMENT BETWEEN THE NORTHWEST CORNER AND THE NORTHEAST CORNER OF SECTION 32 T35N R5E.
 ALSO SET FOUR NEW WITNESS MONUMENTS.

(c)(d)(e) PLAN VIEW OF CORNER WITH TIES TO AT LEAST FOUR WITNESSES. IF IN DISAGREEMENT WITH PREVIOUSLY ESTABLISHED CORNER, SHOW THE DISTANCE BETWEEN THE TWO CORNERS AND ALSO INDICATED THE TIE TO THE DISPUTED CORNER.



RECEIVED BY LINCOLN COUNTY
 SURVEYOR THIS 10TH DAY
 OF January 2013
Tommy Dalk
 COUNTY SURVEYOR

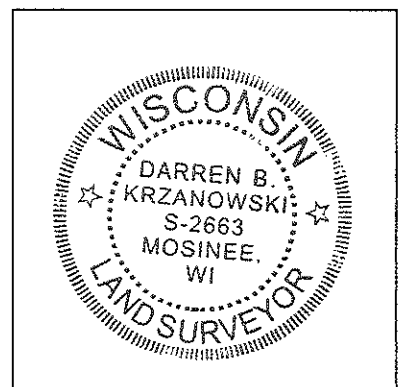
- ◆ = LINCOLN CO. ALUMINUM CAST BERNTSEN SET
- = 1in. X 30in. REBAR 2.67lbs/ft. SET WITH ALUMINUM CAP

I DARREN B. KRZANOWSKI, REGISTERED LAND SURVEYOR NO. 2663, HEREBY CERTIFY THAT THE CORNER LOCATION ON THIS RECORD WAS REFERENCED BY ME OR UNDER MY DIRECTION AND CONTROL AND THAT THIS U.S. PUBLIC LAND SURVEY MONUMENT RECORD IS COMPLETE TO THE BEST OF MY KNOWLEDGE AND BELIEF.

Darren B. Krzanowski

 DARREN B. KRZANOWSKI RLS 2663

DATED THIS 10TH DAY OF JANUARY, 2013

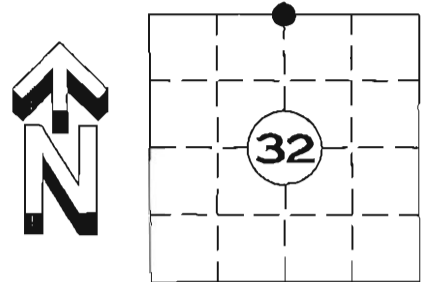


INDEX NO. T35N R5E U7

U.S. PUBLIC LAND SURVEY MONUMENT RECORD

NOTE: THIS FORM IS INTENDED AND DESIGNED TO FULFILL ALL REQUIREMENTS OF WISCONSIN ADMINISTRATIVE CODE CHAPTER A-E 7.08 U.S. PUBLIC LAND SURVEY MONUMENT RECORD (3) (a)(b)(c)(d)(e)(f)(g)(h)(i). AN ADDITIONAL SHEET MAY BE ADDED IF NECESSARY TO CONFIRM WITH SAID REQUIREMENTS.

(a) CORNER LOCATION: $N\frac{1}{4}$ CORNER
SECTION 32 TOWNSHIP 35 NORTH, RANGE 5 EAST
TOWN OF WILSON, LINCOLN COUNTY
LINCOLN COUNTY COORDINATES:
NORTHING: 232525.254
EASTING: 341261.385

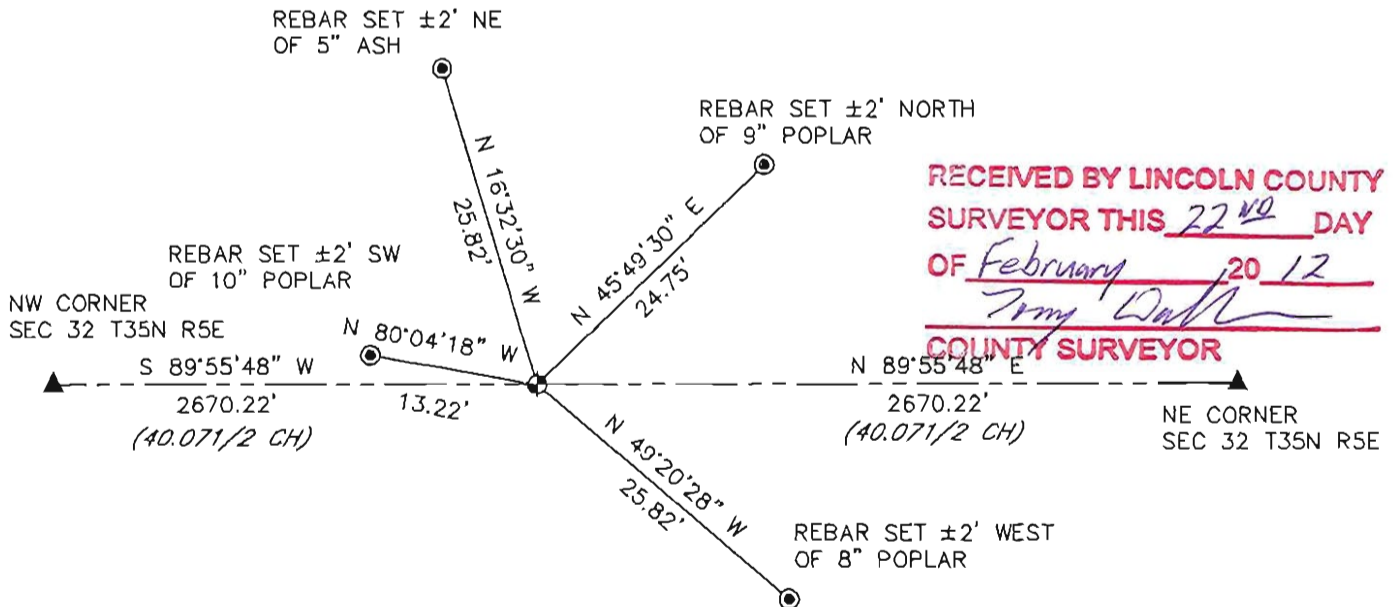


(b) HISTORY OF ORIGINAL CORNER:
ORIGINAL SURVEYOR:
JOSEPH H. JENKINS SEPT. 1862 – OCT. 1862
CEDAR 8 N 37' E 34 LINKS
CEDAR 7 S 9' W 16 LINKS

(f)(g)(h) DESCRIPTION OF MONUMENT FOUND AT THIS CORNER AND IF IT WAS ACCEPTED STATE ALL EVIDENCE (MATERIAL, TESTIMONIAL, OCCUPATIONAL, PLATS, RECORDS, OTHER MONUMENTS) USED AS A BASIS FOR ESTABLISHING LOCATION. IF REESTABLISHED THROUGH LOST CORNER PROPORTIONATE METHODS, INDICATE ALL MONUMENTS, DISTANCES, AND DIRECTIONS USED TO ESTABLISH. INDICATE TYPE OF MONUMENT AND SIGN POST FOUND OR SET.

5 FEBRUARY 2012: SEARCH OF AREA REVEALED NO EVIDENCE OF SECTION CORNER. SET A LINCOLN COUNTY ALUMINUM CAST MONUMENT BY SINGLE PROPORTIONATE MEASUREMENT BETWEEN THE NORTHWEST CORNER AND THE NORTHEAST CORNER OF SECTION 32 T35N R5E. ALSO SET FOUR NEW WITNESS MONUMENTS.

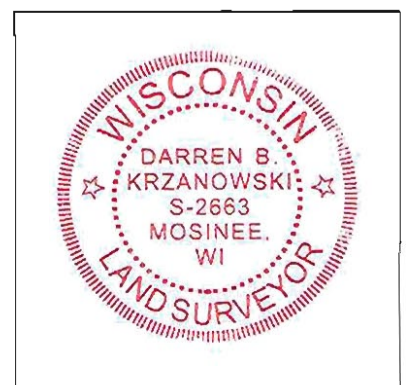
(c)(d)(e) PLAN VIEW OF CORNER WITH TIES TO AT LEAST FOUR WITNESSES. IF IN DISAGREEMENT WITH PREVIOUSLY ESTABLISHED CORNER, SHOW THE DISTANCE BETWEEN THE TWO CORNERS AND ALSO INDICATED THE TIE TO THE DISPUTED CORNER.



- ⊕ = LINCOLN CO. ALUMINUM CAST BERNTSEN SET
- ⊙ = 1in. X 30in. REBAR 2.67lbs/ft. SET WITH ALUMINUM CAP

I DARREN B. KRZANOWSKI, REGISTERED LAND SURVEYOR NO. 2663, HEREBY CERTIFY THAT THE CORNER LOCATION ON THIS RECORD WAS REFERENCED BY ME OR UNDER MY DIRECTION AND CONTROL AND THAT THIS U.S. PUBLIC LAND SURVEY MONUMENT RECORD IS COMPLETE TO THE BEST OF MY KNOWLEDGE AND BELIEF.

Darren Krzanowski
DARREN B. KRZANOWSKI RLS 2663
DATED THIS 20TH DAY OF FEBRUARY, 2012



INDEX NO. T35N R5E U7











COUNTY
CARBING

COLLAW
COR DIST