

U.S. PUBLIC LAND SURVEY MONUMENT RECORD

NOTE: This form is intended and designed to fulfill all requirements of Wisconsin Administrative Code, Chapter A-E 7 .08 U.S. Public Land Survey Monument Record (3)(a)(b)(c)(d)(e)(f)(g)(h)(i). An additional sheet may be added if necessary to conform with said requirements.

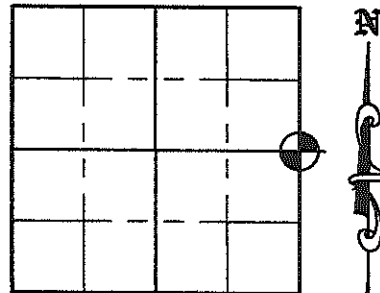
(a) Corner location: Township 35 North

Range 5 East

Town of Wilson

County of Lincoln

Lincoln County N 235239.075
Coordinates E 349120.492



Section 28

(b)(f)(g)(h) Description of monument found at this corner and if it was accepted, state all evidence (material, testimonial, occupation, plats, records, other monuments) used as a basis for accepting. If not accepted or if nothing was found, state evidence used as a basis for establishing location. If reestablished through lost corner proportionate methods, indicate all monuments, distances and directions used to establish. Indicate type of monument found or set and sign post.

September 30, 1862 - Joseph H. Jenkins set wood Section post with bearing trees: Elm 10° S31°E, 36 links, Elm 7° S55°W, 19 links.

1963 - Owens-Illinois "Staff Compass Survey using corners found" of Section 27 (per drawing dated 12/30/86 by W.H. Stuth) shows "Rod" in place at corner and references Section 28 map to West.

November, 1984 - William Stuth (S 1418) set 6" iron pin for corner using centerline of Town road for East-West position and original GLO survey distance call North of the Big Somo River.

July 7, 1985 - U.S. Public Land Survey Monument Record by Lester Schmit, he "Found a 6" iron pin set by William Stuth (S 1418) on survey in November 1984" Replaced iron pin with Bermtsen monument - set witnesses: 5/8" iron rod, N45.5°E, 22.40'; 5/8" iron rod, S38°E, 20.68'; 5/8" iron rod, S43°W, 20.37'; 5/8" iron rod, N37°W, 21.61';

December 10, 1998 - Supplemental U.S. Public Land Survey Monument Record by Robert D. Engleman (S 1694), he " Found a 6" iron pin set by William Stuth (S 1418) on survey in November 1984" Bermtsen monument and ties were destroyed by bridge construction. Replaced Bermtsen monument, set in concrete, and ties per July 7, 1985 tie sheet by Lester Schmit.

July-September, 2009 - Matthew E. Hogle found brass cap Bermtsen monument in concrete in centerline of Zenith Tower Road. Witnesses - found all four 5/8" iron rod witnesses (replaced SW witness that was disturbed by heavy equipment) Took static post-processed GPS measurements to establish Lincoln County Coordinates and measured witnesses as shown below.

(c)(d)(e) Plan view of corner with ties to at least 4 witness monuments. If in disagreement with previously established corner, show the distances between the two corners and also indicate the ties to the disputed corner.



Basis of Bearings:
Magnetic compass bearings.

Scale 1" = 20'
Project # 878

Legend

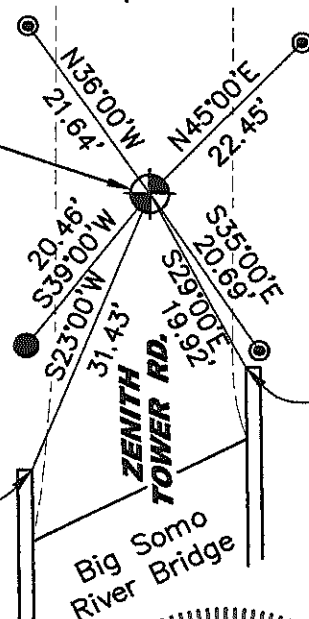
- Found 5/8" Iron Rod
- Set 7/8" by 30" Iron Rod with Aluminum Cap
- Fd. Bermtsen Brass Cap Monument in Concrete

Monument is on C/L of Zenith Tower Rd.

NOTE: Also set PK nail straddle ties 1.00' NE, SW, NW & SE of corner.

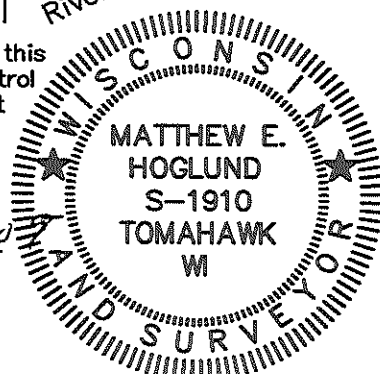
NE Corner of West Conc. Bridge Abutment

NW Corner of East Conc. Bridge Abutment



(i) I, Matthew E. Hogle, certify that the corner location on this record was determined by me under my direction and control and that this U.S. Public Land Survey Monument is correct and complete to the best of my knowledge and belief.


Signature _____ Date 10/21/2009



INDEX NO. S-13

December 10, 1998.

Supplemental US Public Land Survey Monument Record to:

West 1/4 corner of Section 27, T 35 N, R 5 E, Town of Wilson
Lincoln County replacement.

This past fall the bridge over the Big Somo River was replaced and new approaches installed. During the course of the construction, the 1/4 section corner and associated witness monuments were destroyed. CWE&A was hired to replace the monument and performed the work on November 25, 1998. A Berntsen monument was placed in the original location as described on the tie sheet by Lester Schmit and placed about 1 1/2 inches below the surface of the restored roadway. Concrete was used to stabilize the monument and to provide a seal to the new blacktop. All of the ties were also duplicated in material and distance from the monument. The lower section of the original monument was found while digging with hand tools.

The only change to the original tie sheet would be that the bearing to one of the original ties was found to be S 51°E instead of the S 38°E as previously shown. Outside of the elevation being higher than it was in July of 1985, the monument and related witness monuments were installed in their original horizontal location.


Robert D. Engelman, RLS



Job No. 22839800

Central Wisconsin Engineers and Architects, Inc.
5707 Schofield Ave.
Schofield WI
54476

*Referenced to Tie sheet done by Lester Schmit
of Timberland Surveyor Dated 7/7/85*

RECEIVED AT LINCOLN COUNTY
COURTHOUSE THIS 16th DAY
OF Dec. 19 98
Pat Priebe
LAND INFORMATION OFFICE

U.S. PUBLIC LAND SURVEY MONUMENT RECORD

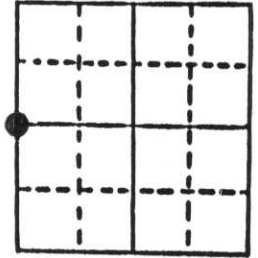
Note: This form is intended and designed to fulfill all requirements of Wisconsin Administrative Code, Chapter A-E 5.02, U.S. Public Land Survey Monument Record (3) (a) (b) (c) (d) (e) (f) (g) (h) (i). An additional sheet may be added if necessary to conform with said requirements.

(a) Corner location: Township 35 North

Range 5 East

Town Wilson

County Lincoln

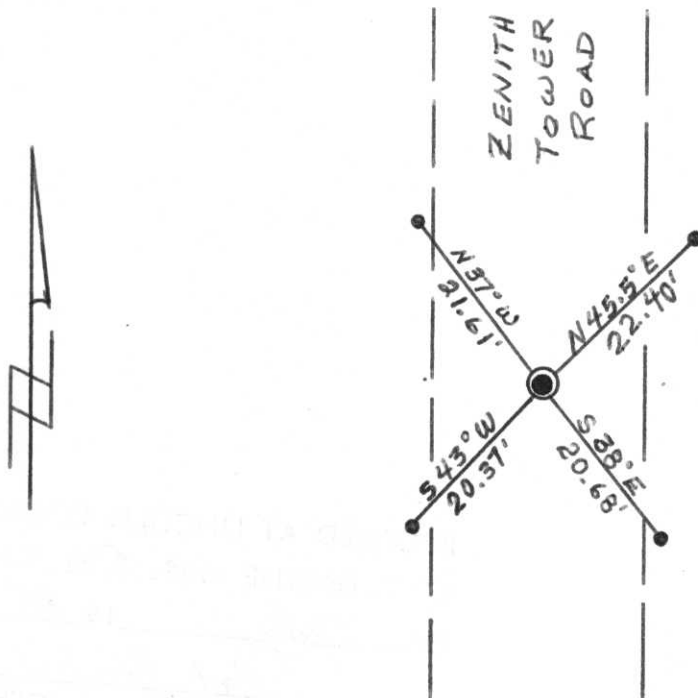


Section 27

b) (f) (g) (h) Description of monument found at this corner and if it was accepted, state all evidence (material, testimonial, occupational, plats, records, other monuments) used as a basis for accepting. If not accepted or if nothing was found, state evidence used as basis for establishing location. If reestablished through lost corner proportionate methods, indicate all monuments, distances and directions used to establish.

Original Gov't. Survey: Aug. 1860 by Alfred Millard, set wood post for corner with bearings, elm 10 S 31° E 36 links & elm 7 S 55° W 19 links. I found a 6" iron pipe set by William H. Stuth on survey in Nov. 1984. Mr. Stuth (S 1418) set the corner by using the centre-line of the town road which runs north & south and Original Gov't. Survey distance call north of the Big Somo River.

c) (d) (e) Plan view of corner with ties to at least 4 witness monuments. If in disagreement with previously established corner, show the distances between the two corners and also indicate the ties to the disputed corner.



LEGEND

- ⊙ Berntsen monument
- 5/8" iron rod

Replaced iron pin with Berntsen monument. Corner is 40' north of the bridge over the Big Somo River.

(i) I, Lester J. Schmit
 (type or print name) certify that the corner location on this record was determined by me or under my direction and control and that this U.S. Public Land Survey Monument Record is correct and complete to the best of my knowledge and belief.

Lester J. Schmit
 Signature

7 July 85
 Date



Index No. 5-13

