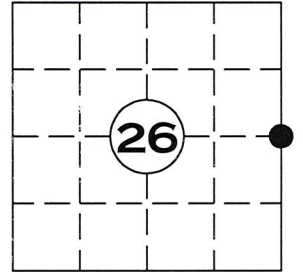


U.S. PUBLIC LAND SURVEY MONUMENT RECORD

NOTE: THIS FORM IS INTENDED AND DESIGNED TO FULFILL ALL REQUIREMENTS OF WISCONSIN ADMINISTRATIVE CODE CHAPTER A-E 7.08 U.S. PUBLIC LAND SURVEY MONUMENT RECORD (3) (a)(b)(c)(d)(e)(f)(g)(h)(i). AN ADDITIONAL SHEET MAY BE ADDED IF NECESSARY TO CONFIRM WITH SAID REQUIREMENTS.

(a) CORNER LOCATION:

E $\frac{1}{4}$ CORNER
 SECTION 26, TOWNSHIP 35 NORTH, RANGE 5 EAST
 TOWN OF WILSON, LINCOLN COUNTY
 LINCOLN COUNTY COORDINATES:
 NORTHING: 235132.511
 EASTING: 359685.156



(b) HISTORY OF ORIGINAL CORNER:

ORIGINAL SURVEYOR: JOSEPH H. JENKINS SEPT. 1862 – OCT. 1862
 BLACK PINE 10 S 15° W 27 LINKS
 TAMARAC 12 S 28° E 84 LINKS

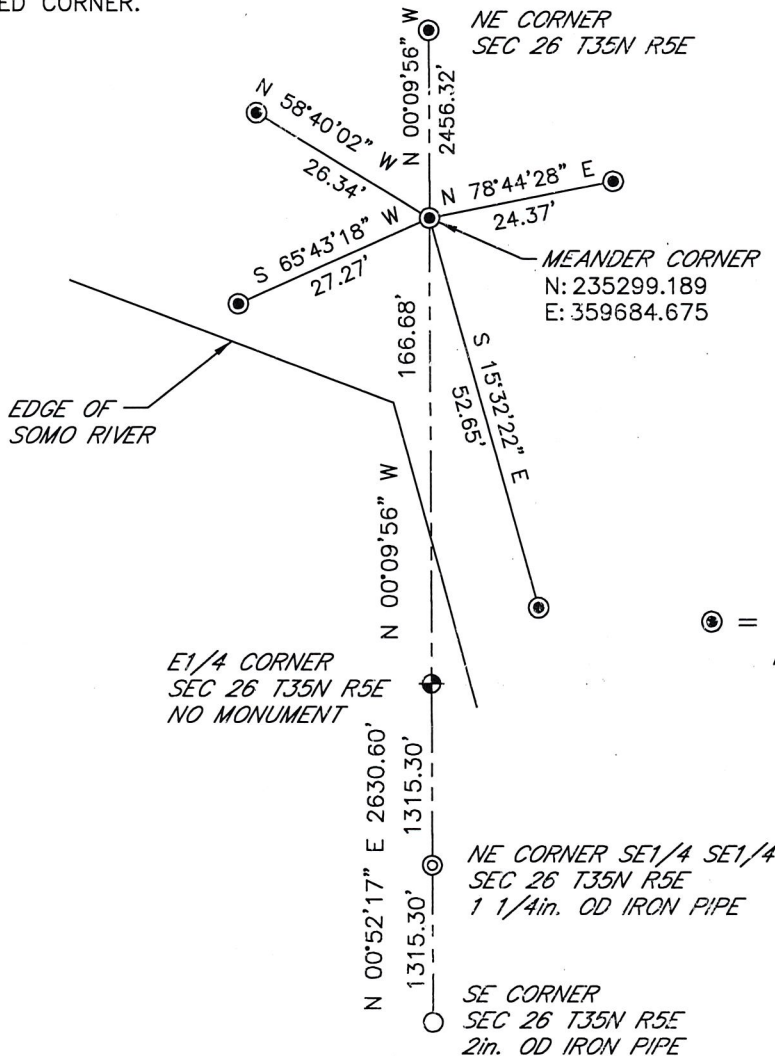
(f)(g)(h) DESCRIPTION OF MONUMENT FOUND AT THIS CORNER AND IF IT WAS ACCEPTED STATE ALL EVIDENCE (MATERIAL, TESTIMONIAL, OCCUPATIONAL, PLATS, RECORDS, OTHER MONUMENTS) USED AS A BASIS FOR ESTABLISHING LOCATION. IF REESTABLISHED THROUGH LOST CORNER PROPORTIONATE METHODS, INDICATE ALL MONUMENTS, DISTANCES, AND DIRECTIONS USED TO ESTABLISH. INDICATE TYPE OF MONUMENT AND SIGN POST FOUND OR SET.

BOUNDARY SURVEY FOR OWENS-ILLINOIS FOREST PRODUCTS SURVEYED 1963-1972 SHOWS THE NE CORNER OF THE SE $\frac{1}{4}$ SE $\frac{1}{4}$ BEING MONUMENTED AND TIED OUT.

LINCOLN COUNTY SURVEY (S175A) DATED 4-29-02 BY RLS 1845 FOUND THE NE CORNER OF THE SE $\frac{1}{4}$ SE $\frac{1}{4}$ SECTION 26 T35N R5E.

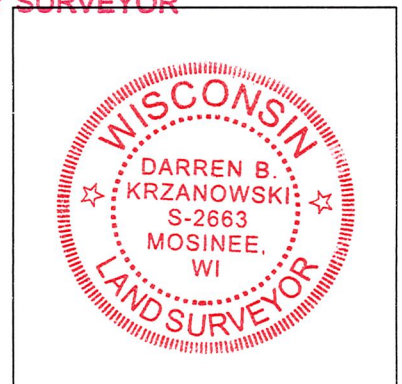
18 JANUARY 2012; COMPUTED THE EAST QUARTER CORNER OF SECTION 26 ON LINE WITH THE SOUTHEAST CORNER OF SECTION 26 AND THE NE CORNER OF THE SE $\frac{1}{4}$ SE $\frac{1}{4}$ AND DOUBLING OVER THE DISTANCE. CORNER FALLS IN THE SOMO RIVER. SEARCH OF THE AREA REVEALED NO EVIDENCE OF CORNER OR POSSESSION. TALKED WITH LONG TIME LOCAL LAND OWNER KARL TYLER, HE SAID HE HAD RUN THIS LINE SEVERAL TIMES WITH A COMPASS AND DID NOT FIND THIS CORNER.

(c)(d)(e) PLAN VIEW OF CORNER WITH TIES TO AT LEAST FOUR WITNESSES. IF IN DISAGREEMENT WITH PREVIOUSLY ESTABLISHED CORNER, SHOW THE DISTANCE BETWEEN THE TWO CORNERS AND ALSO INDICATED THE TIE TO THE DISPUTED CORNER.



⊙ = LINCOLN COUNTY DRIVE ABLE ALUMINUM MONUMENT

RECEIVED BY LINCOLN COUNTY
 SURVEYOR THIS 20TH DAY
 OF January 20 12
Tom Dalk
 COUNTY SURVEYOR



INDEX NO. T35N R5E

RS-21

I DARREN B. KRZANOWSKI, REGISTERED LAND SURVEYOR NO. 2663, HEREBY CERTIFY THAT THE CORNER LOCATION ON THIS RECORD WAS REFERENCED BY ME OR UNDER MY DIRECTION AND CONTROL AND THAT THIS U.S. PUBLIC LAND SURVEY MONUMENT RECORD IS COMPLETE TO THE BEST OF MY KNOWLEDGE AND BELIEF.

Darren Krzanowski
 DARREN B. KRZANOWSKI RLS 2663
 DATED THIS 19TH DAY OF JANUARY, 2012









SURVEY
MARKER



CUSTOMER READY
SURVEY