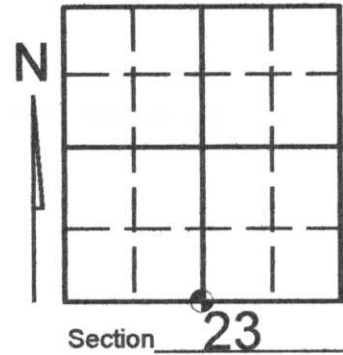


# U.S. PUBLIC LAND SURVEY MONUMENT RECORD

Note: This form is intended and designed to fulfill all requirements of Wisconsin Administrative Code, Chapter A-E 7.08 U.S. Public Land Survey Monument Record (3)(a)(b)(c)(d)(e)(f)(g)(h)(i). An additional sheet may be added if necessary to conform with said requirements.

(a) Corner location: Township 35 North  
 Range 05 East/West

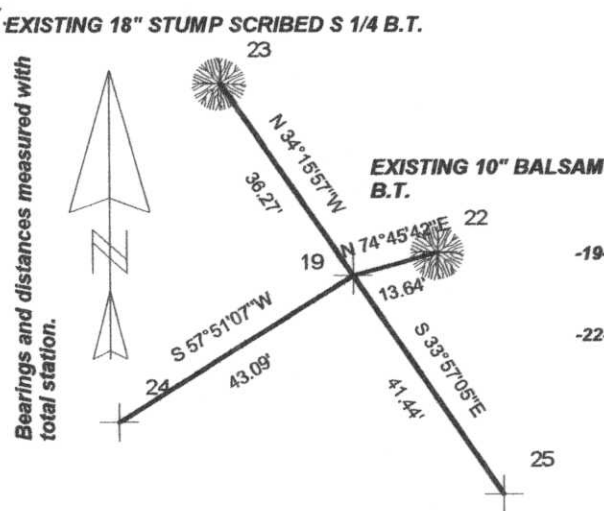
Town/City/Village WILSON  
 County LINCOLN



(b) (f) (g) (h) Description of monument found at this corner and if it was accepted, state all evidence (material, testimonial, occupational, plats, records, other monuments) used as a basis for accepting. If not accepted or if nothing was found, state evidence used as basis for establishing location. If reestablished through lost corner proportionate methods, indicate all monuments, distances and directions used to establish. Indicate type of monument found or set and sign post.

- 1862- Joseph Jenkins set 1/4 section post and made the following bearing trees: black pine 5", S37°W, 27 links, black pine, 8", N14°W, 22 links.
- 1984- William Stuth indicates corner by others on a Owens Illinois plat of survey.
- 2008- Kevin Bixby found 1 1/4" iron pipe and witnessed as shown below.

(c) (d) (e) Plan view of corner with ties to at least 4 witness monuments. If in disagreement with previously established corner, show the distances between the two corners and also indicate the ties to the disputed corner.



NOTE: Set white plastic post 1.00' north of corner.

SCALE: 1" = 30'

### LEGEND

- 19- FOUND 1 1/4" IRON PIPE AND REPLACED SAID IRON PIPE WITH LINCOLN COUNTY BERNSTEN MONUMENT
- 22-, -23-, -24-, -25- SET 3/4" X 30" LINCOLN COUNTY CAPPED WITNESS MONUMENT

RECEIVED BY LINCOLN COUNTY SURVEYOR THIS 11<sup>TH</sup> DAY OF June 20 08  
*Kevin P. Bixby*  
 COUNTY SURVEYOR

(i) I, KEVIN P. BIXBY

(type or print name) certify that the corner location on this record was determined by me or under my direction and control and that this U.S. Public Land Survey Monument Record is correct and complete to the best of my knowledge and belief.

*Kevin P. Bixby* \_\_\_\_\_ 06/09/08  
 Signature Date



Stamp

Index No. Q-19