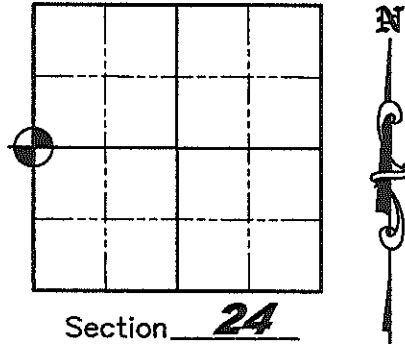


# U.S. PUBLIC LAND SURVEY MONUMENT RECORD

NOTE: This form is intended and designed to fulfill all requirements of Wisconsin Administrative Code, Chapter A-E 7.08 U.S. Public Land Survey Monument Record (3)(a)(b)(c)(d)(e)(f)(g)(h)(i). An additional sheet may be added if necessary to conform with said requirements.

(a) Corner location: Township 35 North  
 Range 5 East  
 Town of Wilson  
 County of Lincoln  
 Lincoln County N 239330.942  
 Coordinates E 368276.086



(b)(f)(g)(h) Description of monument found at this corner and if it was accepted, state all evidence (material, testimonial, occupation, plats, records, other monuments) used as a basis for accepting. If not accepted or if nothing was found, state evidence used as a basis for establishing location. If reestablished through lost corner proportionate methods, indicate all monuments, distances and directions used to establish. Indicate type of monument found or set and sign post.

September 25, 1862 - Joseph H. Jenkins set wood Section post with bearing trees: Yellow Pine 16" N1°W, 721 links, Yellow Pine 14" N1°E, 729 links

1949 - Owens-Illinois "Transit & Chain Survey using corners & fence lines found" of Section 24 (per drawing dated 12/30/86 by W.H. Stuth) shows monument "By Others" in place at corner.

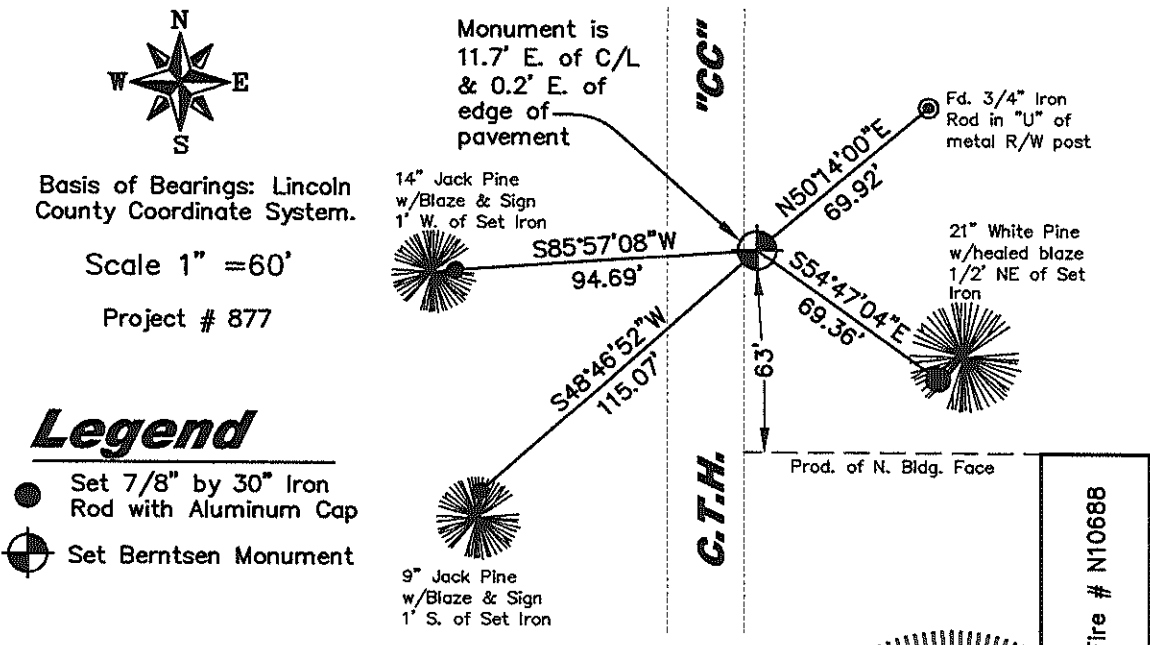
December 28, 1984 - Owens-Illinois "Transit & EDM Survey using corners & evidence found" of Section 23 by W.H. Stuth shows monument "Spike or Rod" in place at corner.

September 9, 1985 - Tie sheet by Lester Schmit, he found a nail in the centerline of C.T.H. "CC" set by William H. Stuth with an old fence line running Easterly from the corner. Replaced nail with 30" Bermtsen Monument - set witnesses: 11" Jack Pine, N78°W, 34.41'; 9" Jack Pine, S50°W, 55.80'; 15" Norway Pine, N56°E, 50.38'; 14" White Pine, S54°E, 69.33'.

June 28, 1999 - Lester Schmit shows "6" spike found in place" at the corner on Certified Survey Map No. 1284.

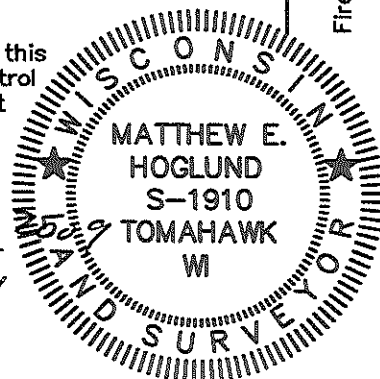
June-July, 2009 - Matthew E. Hoglund found base of badly corroded Bermtsen Monument approximately 2-1/2' deep at the East edge of pavement of C.T.H. "CC" and the White Pine bearing tree to the Southeast is the only witness remaining. Set new Bermtsen Monument 0.4' below edge of pavement and took static post-processed GPS measurements to establish Lincoln County Coordinates and set new witnesses as shown below.

(c)(d)(e) Plan view of corner with ties to at least 4 witness monuments. If in disagreement with previously established corner, show the distances between the two corners and also indicate the ties to the disputed corner.



(i) I, Matthew E. Hoglund, certify that the corner location on this record was determined by me under my direction and control and that this U.S. Public Land Survey Monument is correct and complete to the best of my knowledge and belief.

*Matthew E. Hoglund*  
 Signature Date Sept. 22, 2009  
 RECEIVED BY LINCOLN COUNTY SURVEYOR THIS 22<sup>ND</sup> DAY OF September 20 09  
*Tony Dahl*  
 COUNTY SURVEYOR



INDEX NO. 0-21

# U.S. PUBLIC LAND SURVEY MONUMENT RECORD

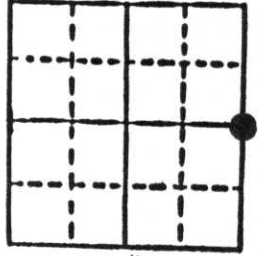
**Note:** This form is intended and designed to fulfill all requirements of Wisconsin Administrative Code, Chapter A-E 5.02, U.S. Public Land Survey Monument Record (3) (a) (b) (c) (d) (e) (f) (g) (h) (i). An additional sheet may be added if necessary to conform with said requirements.

(a) Corner location: Township 35 North

Range 5 East

Town Wilson

County Lincoln

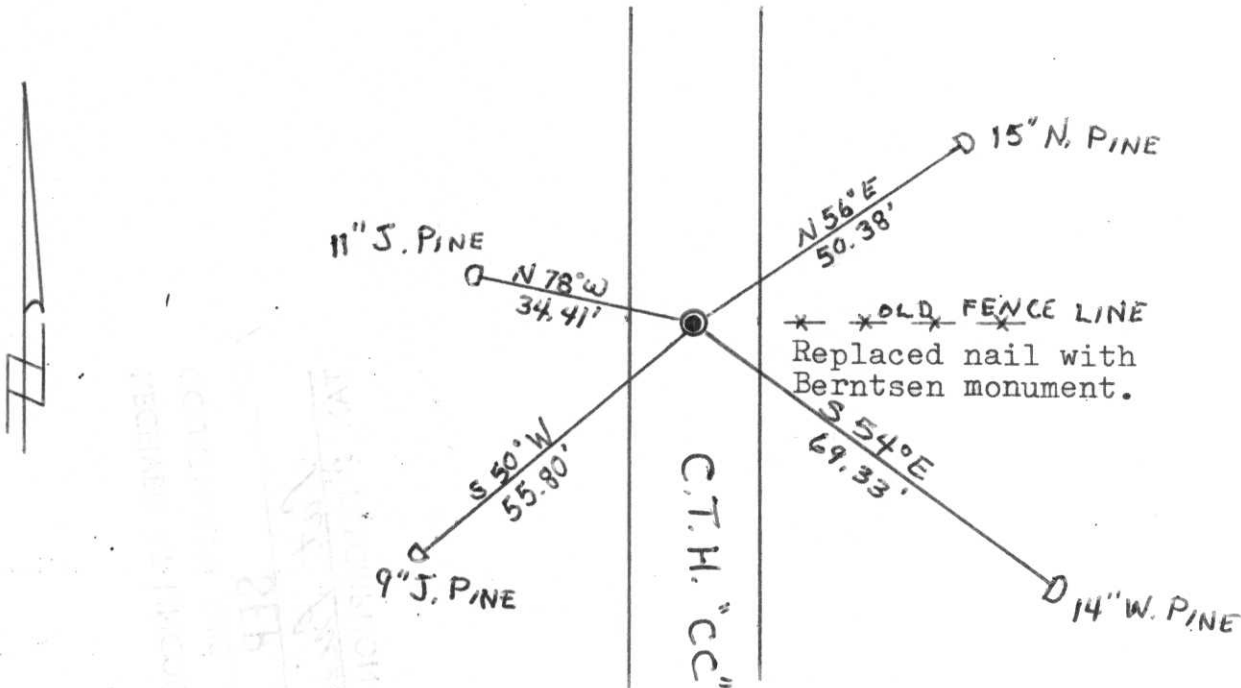


Section 23

b) (f) (g) (h) Description of monument found at this corner and if it was accepted, state all evidence (material, testimonial, occupational, plats, records, other monuments) used as a basis for accepting. If not accepted or if nothing was found, state evidence used as basis for establishing location. If reestablished through lost corner proportionate methods, indicate all monuments, distances and directions used to establish.

Original Gov't. Survey: Sep. 1862 by Joseph Jenkins, set wood post for corner with bearings, yellow pine 16 N 1° W 721 links & yellow pine 14 N 1° E 729 links. I found a nail set by William H. Stuth on survey in Nov. 1984 for the corner. Mr. Stuth (S 1418) set the corner by using the centre-line of County Trunk Highway "CC" as the east-west location & an old fence line to the east, with its westerly extension for the north-south location.

c) (d) (e) Plan view of corner with ties to at least 4 witness monuments. If in disagreement with previously established corner, show the distances between the two corners and also indicate the ties to the disputed corner.



(i) I, Lester J. Schmit

(type or print name) certify that the corner location on this record was determined by me or under my direction and control and that this U.S. Public Land Survey Monument Record is correct and complete to the best of my knowledge and belief.

Lester J. Schmit  
Signature

9 Sep 85  
Date



Index No. 0-21