

U.S. PUBLIC LAND SURVEY MONUMENT RECORD

NOTE: THIS FORM IS INTENDED AND DESIGNED TO FULFILL ALL REQUIREMENTS OF WISCONSIN ADMINISTRATIVE CODE, CHAPTER A-E 7.08, U.S. PUBLIC LAND SURVEY MONUMENT RECORD (3)(a)(b)(c)(d)(e)(f)(g)(h)(i). ADDITIONAL SHEETS MAY BE NECESSARY TO CONFORM TO SAID REQUIREMENTS.

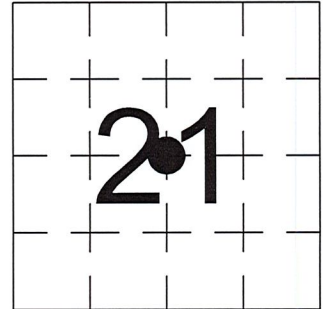
T 35 N, R 5 E

(a) CORNER LOCATION:

CENTER 1/4 CORNER, SECTION 21
 TOWNSHIP 35 NORTH
 RANGE 5 EAST
 TOWN OF WILSON
 LINCOLN COUNTY
 WISCONSIN

(b) HISTORY OF ORIGINAL CORNER:

ORIGINAL SURVEYOR: Lester J. Schmit, Berntsen
 COMMENCING DATE:
 COMPLETION DATE: April 10, 1986
 ORIGINAL BEARING TREES:



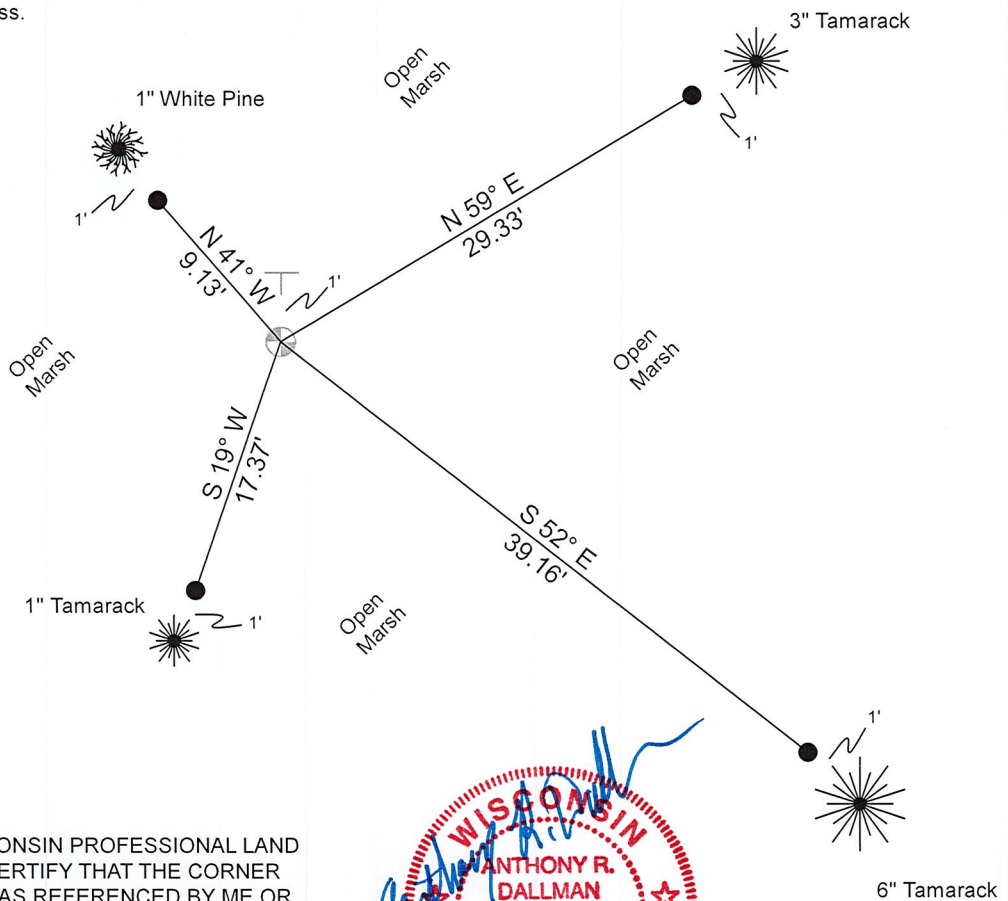
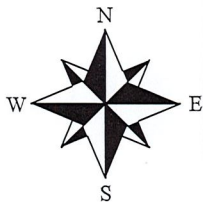
(f)(g)(h) DESCRIPTION OF MONUMENT FOUND AT THIS CORNER AND IF IT WAS ACCEPTED. STATE ALL EVIDENCE (MATERIAL, TESTIMONIAL, OCCUPATIONAL, PLATS, RECORDS, OTHER MONUMENTS) USED AS A BASIS FOR ESTABLISHING LOCATION. IF RE-ESTABLISHING THROUGH LOST CORNER PROPORTIONATE METHODS, INDICATE ALL MONUMENTS, DISTANCES, AND DIRECTIONS USED TO ESTABLISH. INDICATE TYPE OF MONUMENTS FOUND OR SET.

09/12/2022, Christopher Fieri accepted Berntsen Monument for a property survey.

7/20/2023, I, Anthony R. Dallman, PLS-2405, found a Berntsen Monument, up 30". I accepted this location and set witness monuments, as shown in the sketch below, to further perpetuate the corner location.

(c)(d)(e) PLAN VIEW OF THE CORNER WITH TIES TO AT LEAST FOUR WITNESSES. IF IN DISAGREEMENT WITH PREVIOUSLY ESTABLISHED CORNER, SHOW THE DISTANCES BETWEEN THE TWO CORNERS AND ALSO THE TIES TO THE DISPUTED CORNER.

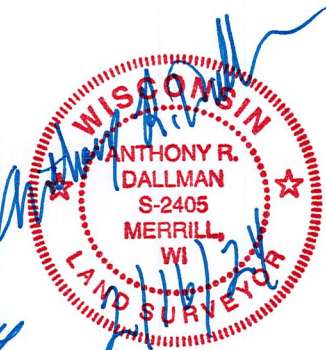
- Tie bearings by hand-held compass.
- Tie distances by steel tape.
- Not to scale.



- - Set Berntsen Swamp Rod
- T - Set Vinyl Post

I, ANTHONY R. DALLMAN, WISCONSIN PROFESSIONAL LAND SURVEYOR, S-2405, HEREBY CERTIFY THAT THE CORNER LOCATION ON THIS RECORD WAS REFERENCED BY ME OR UNDER MY DIRECTION AND CONTROL AND THAT THIS U.S. PUBLIC LAND SURVEY MONUMENT RECORD IS COMPLETE TO THE BEST OF MY KNOWLEDGE AND BELIEF.

Anthony R. Dallman 02/16/24
 ANTHONY R. DALLMAN, PLS S-2405

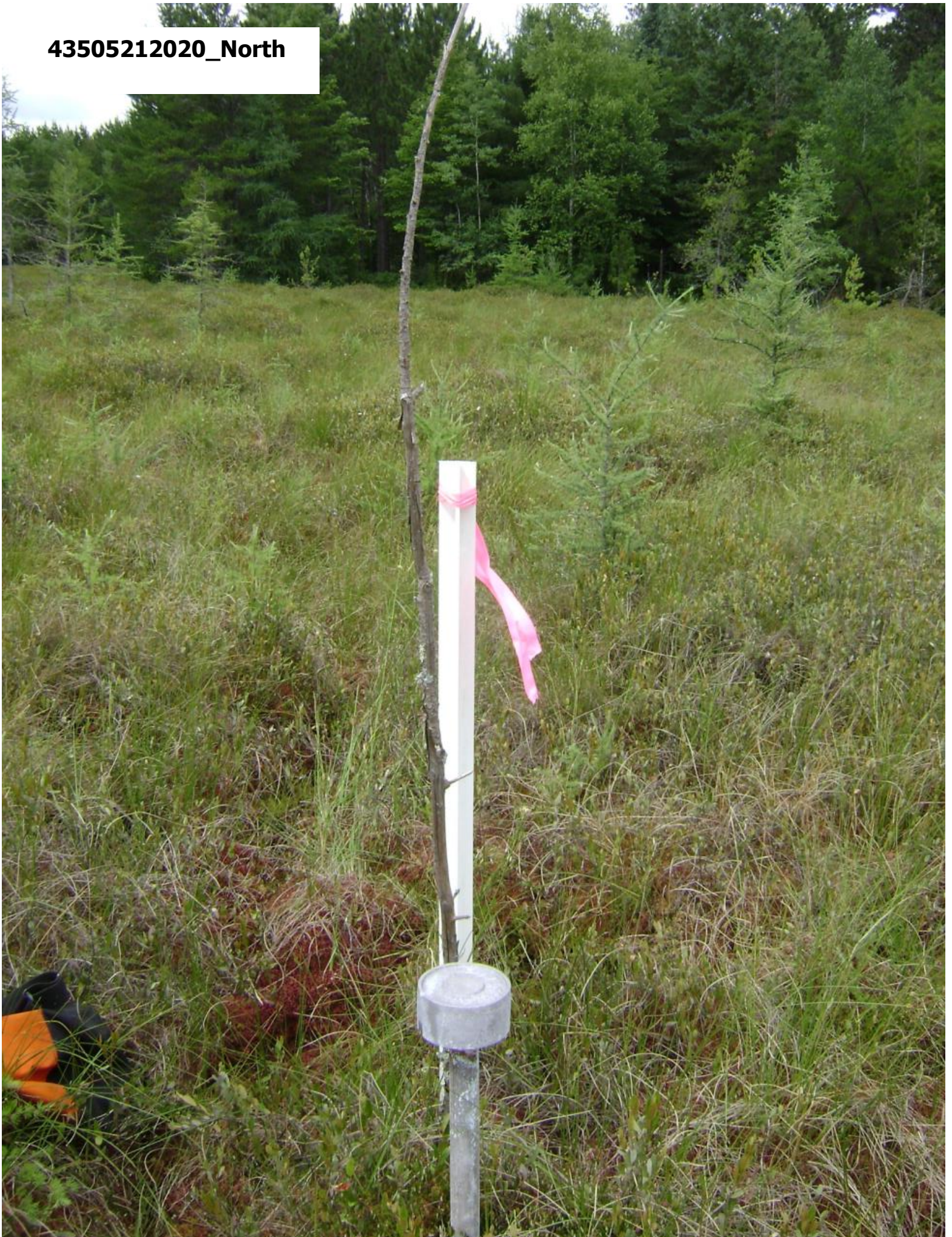


INDEX NO. O-11

43505212020_Mon-N

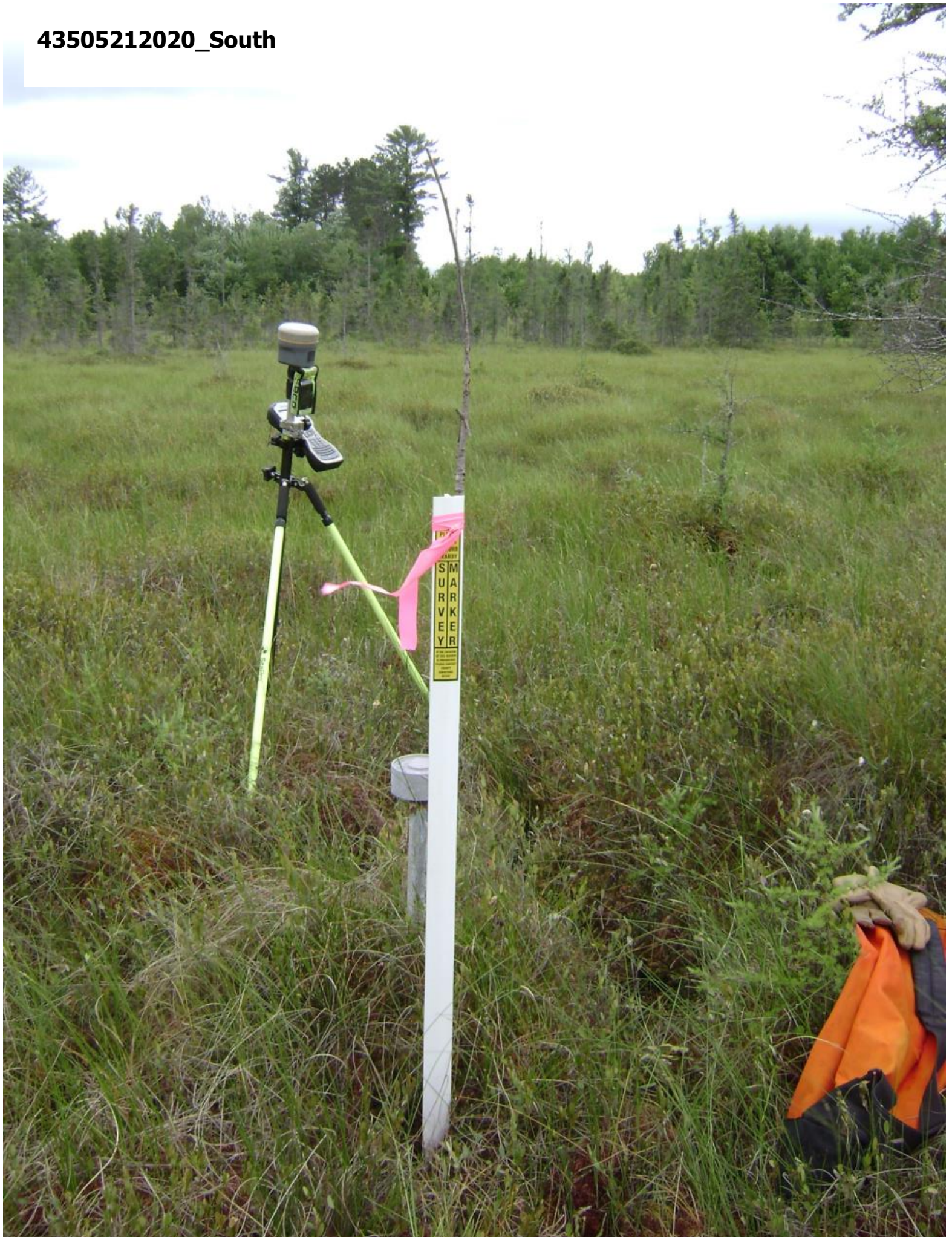


43505212020_North



43505212020_West





43505212020_East



U.S. PUBLIC LAND SURVEY MONUMENT RECORD

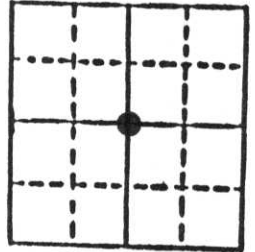
Note: This form is intended and designed to fulfill all requirements of Wisconsin Administrative Code, Chapter A-E 5.02, U.S. Public Land Survey Monument Record (3) (a) (b) (c) (d) (e) (f) (g) (h) (i). An additional sheet may be added if necessary to conform with said requirements.

(a) Corner location: Township 35 North

Range 5 East

Town Wilson

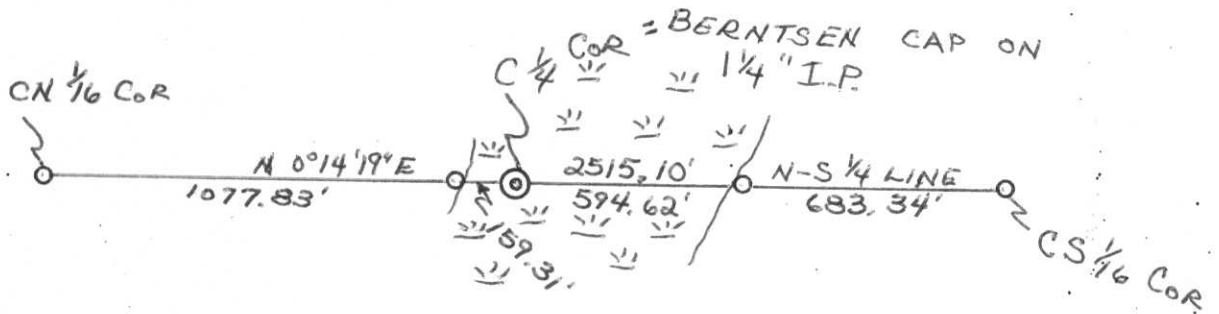
County Lincoln



Section 21

b) (f) (g) (h) Description of monument found at this corner and if it was accepted, state all evidence (material, testimonial, occupational, plats, records, other monuments) used as a basis for accepting. If not accepted or if nothing was found, state evidence used as basis for establishing location. If reestablished through lost corner proportionate methods, indicate all monuments, distances and directions used to establish.

c) (d) (e) Plan view of corner with ties to at least 4 witness monuments. If in disagreement with previously established corner, show the distances between the two corners and also indicate the ties to the disputed corner.



o = 1 1/4" I.P.

(i) I, Lester J. Schmit
 (type or print name) certify that the corner location on this record was determined by me or under my direction and control and that this U.S. Public Land Survey Monument Record is correct and complete to the best of my knowledge and belief.

Lester J. Schmit
 Signature

8 June 1987
 Date



Index No 0-11