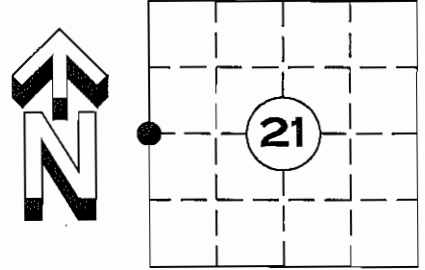


# U.S. PUBLIC LAND SURVEY MONUMENT RECORD

NOTE: THIS FORM IS INTENDED AND DESIGNED TO FULFILL ALL REQUIREMENTS OF WISCONSIN ADMINISTRATIVE CODE CHAPTER A-E 7.08 U.S. PUBLIC LAND SURVEY MONUMENT RECORD (3) (a)(b)(c)(d)(e)(f)(g)(h)(i). AN ADDITIONAL SHEET MAY BE ADDED IF NECESSARY TO CONFIRM WITH SAID REQUIREMENTS.

(a) CORNER LOCATION:  
 WEST QUARTER CORNER  
 SECTION 21, TOWNSHIP 35 NORTH, RANGE 5 EAST  
 TOWN OF WILSON, LINCOLN COUNTY  
 LINCOLN COUNTY COORDINATES:  
 NORTHING: 240581.520  
 EASTING: 343717.475



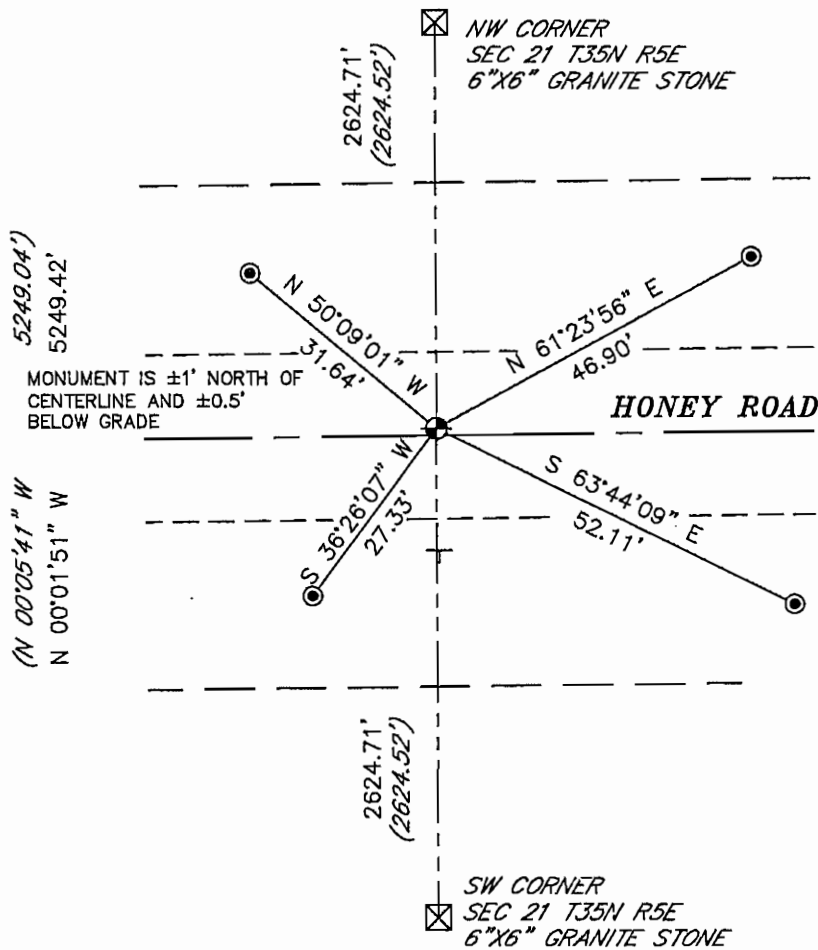
(b) HISTORY OF ORIGINAL CORNER:  
 ORIGINAL SURVEYOR: JOSEPH H. JENKINS, SEPT. 1862-OCT 1862  
 BIRCH 8 N 74° E 27 LINKS  
 BIRCH 8 S 44° W 14 LINKS

(f)(g)(h) DESCRIPTION OF MONUMENT FOUND AT THIS CORNER AND IF IT WAS ACCEPTED STATE ALL EVIDENCE (MATERIAL, TESTIMONIAL, OCCUPATIONAL, PLATS, RECORDS, OTHER MONUMENTS) USED AS A BASIS FOR ESTABLISHING LOCATION. IF REESTABLISHED THROUGH LOST CORNER PROPORTIONATE METHODS, INDICATE ALL MONUMENTS, DISTANCES, AND DIRECTIONS USED TO ESTABLISH. INDICATE TYPE OF MONUMENT AND SIGN POST FOUND OR SET.

BOUNDARY SURVEY FOR OWENS-ILLINOIS FOREST PRODUCTS BY RLS 1418, DATED 12-27-84, CALLS FOR A ROD AT THE WEST QUARTER CORNER. AT THE MID POINT AND ON LINE BETWEEN THE NORTHWEST AND SOUTHWEST SECTION CORNERS.

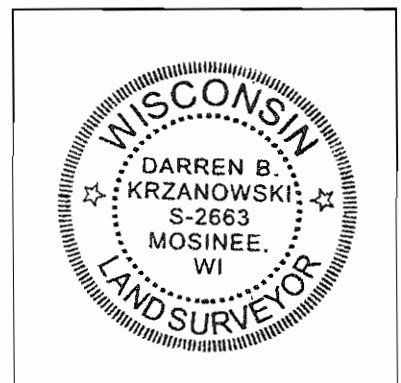
20 MARCH 2012, SEARCHED AREA AND FOUND NO EVIDENCE OF CALLED FOR ROD. SET LINCOLN COUNTY BERNTSEN ALUMINUM CAST MONUMENT AT THE MID POINT AND ON LINE BETWEEN THE NORTHWEST CORNER AND THE SOUTHWEST CORNER OF SAID SECTION 21 AND FOUR NEW WITNESS MONUMENTS

(c)(d)(e) PLAN VIEW OF CORNER WITH TIES TO AT LEAST FOUR WITNESSES. IF IN DISAGREEMENT WITH PREVIOUSLY ESTABLISHED CORNER, SHOW THE DISTANCE BETWEEN THE TWO CORNERS AND ALSO INDICATED THE TIE TO THE DISPUTED CORNER.



- ⊕ = LINCOLN COUNTY BERNTSEN CAST ALUMINUM MONUMENT SET
- ⊙ = 1in. X 30in. REBAR 2.67lbs/ft. WITH ALUMINUM CAP SET
- ⊥ = VINYL T-POST
- ( ) = PER RLS 1418

RECEIVED BY LINCOLN COUNTY SURVEYOR THIS 30<sup>TH</sup> DAY OF March 20 12  
*Tommy Dalk*  
 COUNTY SURVEYOR



I DARREN B. KRZANOWSKI, REGISTERED LAND SURVEYOR NO. 2663, HEREBY CERTIFY THAT THE CORNER LOCATION ON THIS RECORD WAS REFERENCED BY ME OR UNDER MY DIRECTION AND CONTROL AND THAT THIS U.S. PUBLIC LAND SURVEY MONUMENT RECORD IS COMPLETE TO THE BEST OF MY KNOWLEDGE AND BELIEF.

*Darren Krzanowski*  
 DARREN B. KRZANOWSKI RLS 2663  
 DATED THIS 22ND DAY OF MARCH 2012

INDEX NO. T35N R5E 09



















