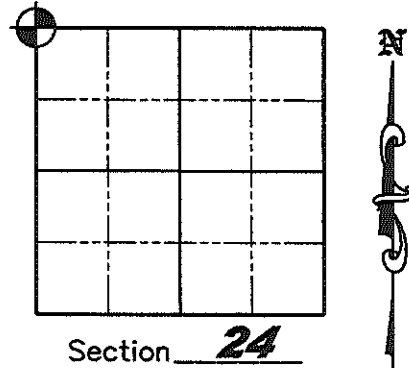


U.S. PUBLIC LAND SURVEY MONUMENT RECORD

NOTE: This form is intended and designed to fulfill all requirements of Wisconsin Administrative Code, Chapter A-E 7.08 U.S. Public Land Survey Monument Record (3)(a)(b)(c)(d)(e)(f)(g)(h)(i). An additional sheet may be added if necessary to conform with said requirements.

(a) Corner location: Township 35 North
 Range 5 East
 Town of Wilson
 County of Lincoln
 Lincoln County N 241966.074
 Coordinates E 368280.514



(b)(f)(g)(h) Description of monument found at this corner and if it was accepted, state all evidence (material, testimonial, occupation, plats, records, other monuments) used as a basis for accepting. If not accepted or if nothing was found, state evidence used as a basis for establishing location. If reestablished through lost corner proportionate methods, indicate all monuments, distances and directions used to establish. Indicate type of monument found or set and sign post.

September 25, 1862 - Joseph H. Jenkins set wood Section post with bearing trees: Black Pine 6° N69°W, 27 links, Black Pine 8° N40°E, 13 links, Black Pine 8° S40°W, 7 links, Black Pine 8° S36°E, 21 links,

1949 - Owens-Illinois "Transit & Chain Survey using corners & fence lines found" of Section 24 (per drawing dated 12/30/86 by W.H. Stuth) shows monument "By Others" in place at corner.

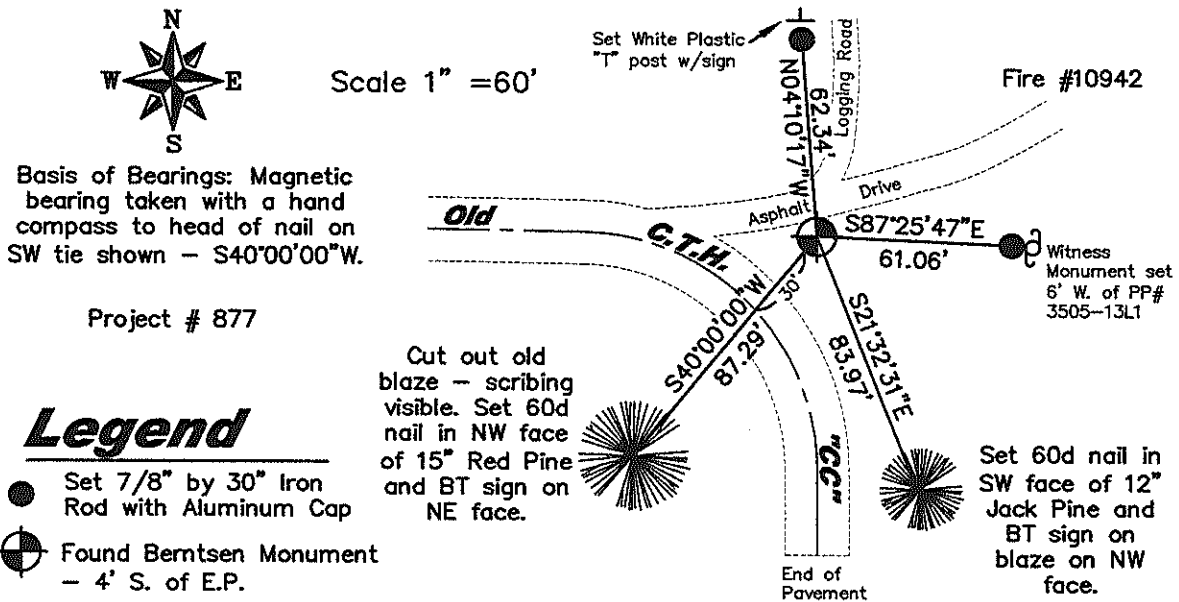
1965 - Owens-Illinois "Transit & Chain Survey using corners found" of Section 13 (per drawing dated 12/30/86 by W.H. Stuth) shows monument "By Others" in place at corner.

June 20, 1978 - (Tie sheet dated September 10, 1982) Lester Schmit found a 1-1/4" iron pipe, 45" long, the top being 6" below the surface of a private drive running NE'y and a woods road running to the North. Replaced iron pipe with 30" Berntsen Monument - set witnesses: P.K. nail in Power Pole #3505-13L1, N88°E, 67.04'; 5" Jack Pine, S36°E, 35.94'; 6" Norway Pine, S34°W, 87.30'; 7" Jack Pine, N73°W, 132.39'.

December 28, 1984 - Owens-Illinois "Transit & EDM Survey using corners & evidence found" of Section 23 by W.H. Stuth shows monument "By Others" in place at corner.

June-July, 2009 - Matthew E. Hoglund found Berntsen Monument, P.K. in Power Pole and Norway Pine bearing tree per Lester Schmit September 10, 1982 Tie Sheet. Took static post-processed GPS measurements on Berntsen Monument to establish Lincoln County Coordinates and set new witnesses as shown below.

(c)(d)(e) Plan view of corner with ties to at least 4 witness monuments. If in disagreement with previously established corner, show the distances between the two corners and also indicate the ties to the disputed corner.



Basis of Bearings: Magnetic bearing taken with a hand compass to head of nail on SW tie shown - S40°00'00\"/>

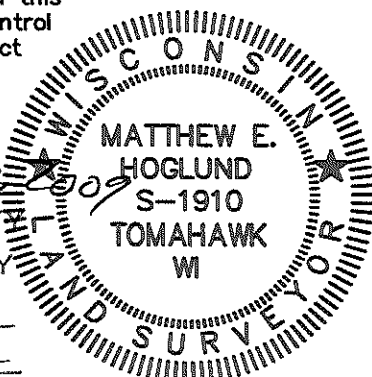
Project # 877

Legend

- Set 7/8" by 30" Iron Rod with Aluminum Cap
- ⊙ Found Berntsen Monument - 4' S. of E.P.

(i) I, Matthew E. Hoglund, certify that the corner location on this record was determined by me under my direction and control and that this U.S. Public Land Survey Monument is correct and complete to the best of my knowledge and belief.

Signature Matthew E. Hoglund Date Sept. 22, 2009
 RECEIVED BY LINCOLN COUNTY SURVEYOR THIS 22ND DAY OF September 20 09
Tony Dahl
 COUNTY SURVEYOR



INDEX NO. M-21

CERTIFIED LAND CORNER RESTORATION

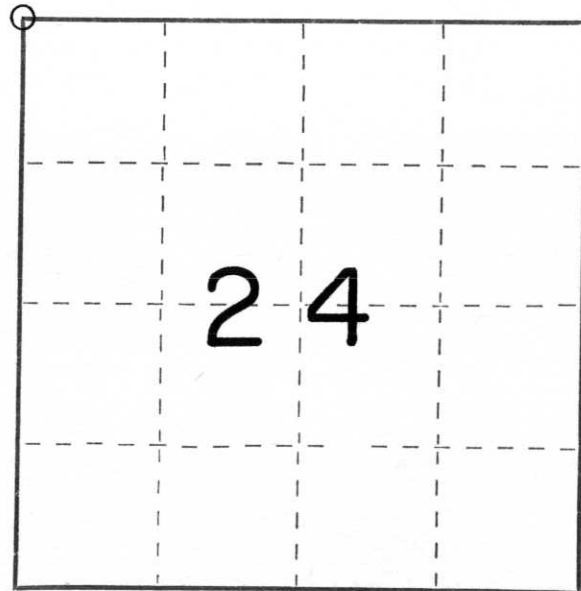
Index No. M-21

State of Wisconsin }
County of Lincoln } ss.

I Lester J. Schmit do hereby certify that on the 20th day of June, 1978, I found evidence of the Northwest corner of Section 24 Township 35, North, Range 5 East, Fourth, Principal Meridian, as described hereon; and that from this evidence I established a new monument and accessories as described hereon to perpetuate the original location of this corner.

Resident witnesses:

.....
.....
.....



○ = Corner monument restored.

History of original corner establishment:

Surveyor: Joseph H. Jenkins
Date: 25 September 1862
Monumentation: Wood Post
Witnesses: 6" Black Pine, N 69° W, 27 links
8" Black Pine, N 40° E, 13 links
8" Black Pine, S 66° W, 7 links
8" Black Pine, S 36° E, 21 links

Description of corner evidence found:

Found a 1 1/4" iron pipe, 45" long, the top being 6" below the surface of a private drive running Northeasterly and a woods road running to the North. The corner is 35' Northeasterly from the centreline of County Trunk Highway "CC".

Description of monument and accessories I established to perpetuate the original location of this corner.

Set 30" Berntsen monument to replace iron pipe for corner. Top of Berntsen monument is 5" below surface of driveway.

Witnesses: P.K. nail in power pole # 3505-13L1, N 88° E, 67.04'
5" Jack Pine, S 36° E, 35.94'
6" Norway Pine, S 34° W, 87.30'
7" Jack Pine, N 73° W, 132.39'

Dated at Tomahawk, Wis., this 10th day of September, 1982

Signature Lester J. Schmit Title Land Surveyor Registration No. S-1192
(County Surveyor, Registered Land Surveyor, or other duly authorized official)

Office of Register of Deeds, County of....., I hereby certify that the within instrument was filed in this office for record on the.....day of....., 19..... at.....o'clock..... M.

.....
(Register of Deeds)

By.....Deputy