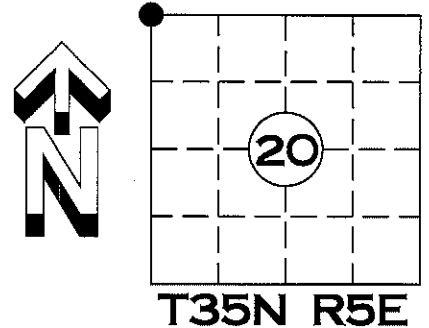


U.S. PUBLIC LAND SURVEY MONUMENT RECORD

NOTE: THIS FORM IS INTENDED AND DESIGNED TO FULFILL ALL REQUIREMENTS OF WISCONSIN ADMINISTRATIVE CODE CHAPTER A-E 7.08 U.S. PUBLIC LAND SURVEY MONUMENT RECORD (3) (a)(b)(c)(d)(e)(f)(g)(h)(i). AN ADDITIONAL SHEET MAY BE ADDED IF NECESSARY TO CONFIRM WITH SAID REQUIREMENTS.

(a) CORNER LOCATION: NW CORNER
SECTION 20, TOWNSHIP 35 NORTH, RANGE 5 EAST
TOWN OF WILSON, LINCOLN COUNTY
LINCOLN COUNTY COORDINATES:
NORTHING: 242986.026
EASTING: 338466.402

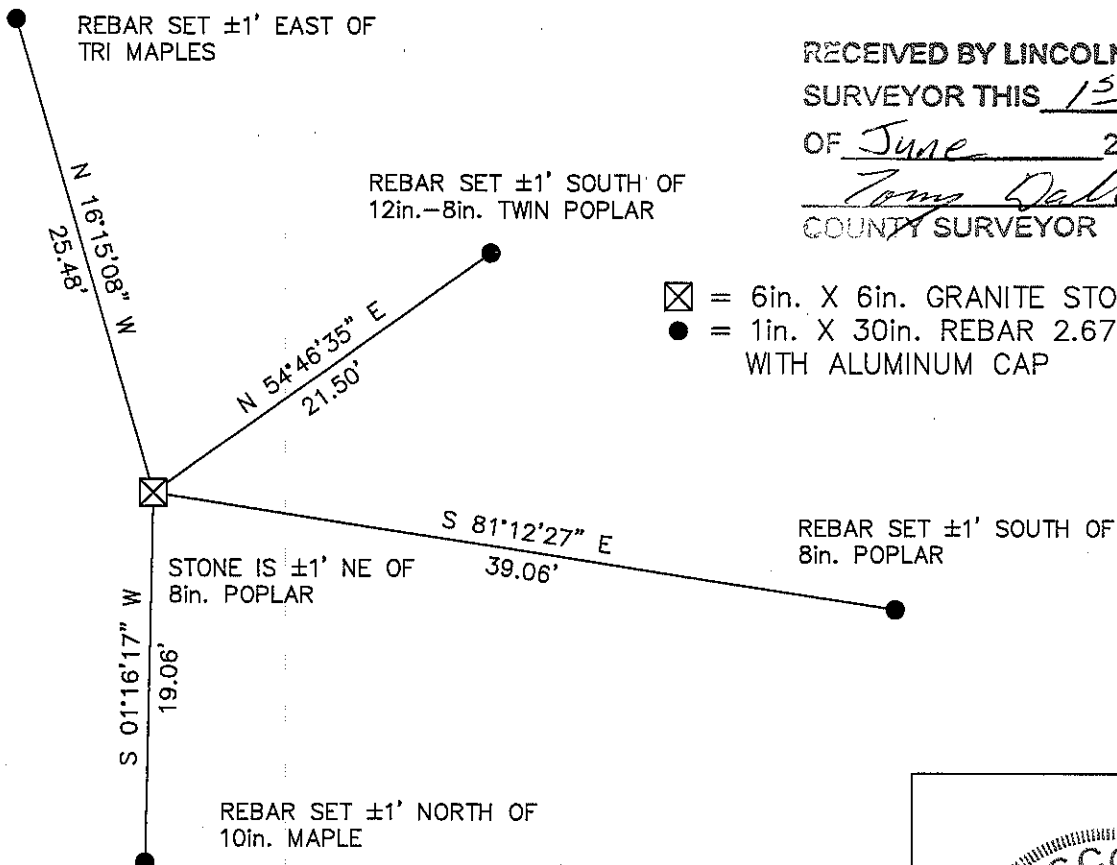


(b) HISTORY OF ORIGINAL CORNER:
ORIGINAL SURVEYOR: JOSEPH H. JENKINS SEPT. 1862 – OCT. 1862
WHITE PINE 9 N 51° E 40 LINKS
CEDAR 8 S 42° W 35 LINKS
CEDAR 6 N 11° W 26 LINKS
CEDAR 7 S 20° E 30 LINKS

(f)(g)(h) DESCRIPTION OF MONUMENT FOUND AT THIS CORNER AND IF IT WAS ACCEPTED STATE ALL EVIDENCE (MATERIAL, TESTIMONIAL, OCCUPATIONAL, PLATS, RECORDS, OTHER MONUMENTS) USED AS A BASIS FOR ESTABLISHING LOCATION. IF REESTABLISHED THROUGH LOST CORNER PROPORTIONATE METHODS, INDICATE ALL MONUMENTS, DISTANCES, AND DIRECTIONS USED TO ESTABLISH. INDICATE TYPE OF MONUMENT AND SIGN POST FOUND OR SET.

4 APRIL 2012; FOUND 6in. X 6in. GRANITE STONE IN GOOD CONDITION. ACCEPTED LOCATION AND SET FOUR NEW WITNESS MONUMENTS

(c)(d)(e) PLAN VIEW OF CORNER WITH TIES TO AT LEAST FOUR WITNESSES. IF IN DISAGREEMENT WITH PREVIOUSLY ESTABLISHED CORNER, SHOW THE DISTANCE BETWEEN THE TWO CORNERS AND ALSO INDICATED THE TIE TO THE DISPUTED CORNER.

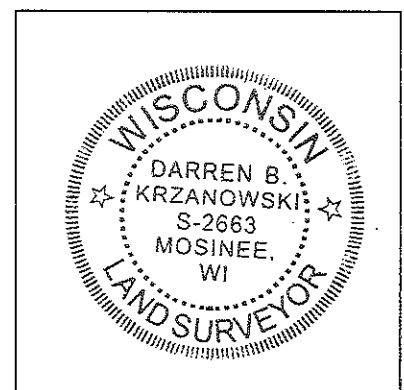


RECEIVED BY LINCOLN COUNTY
SURVEYOR THIS 15TH DAY
OF June 20 / 12
Tom Dallen
COUNTY SURVEYOR

☒ = 6in. X 6in. GRANITE STONE FOUND
● = 1in. X 30in. REBAR 2.67lbs/ft. SET WITH ALUMINUM CAP

I DARREN B. KRZANOWSKI, REGISTERED LAND SURVEYOR NO. 2663, HEREBY CERTIFY THAT THE CORNER LOCATION ON THIS RECORD WAS REFERENCED BY ME OR UNDER MY DIRECTION AND CONTROL AND THAT THIS U.S. PUBLIC LAND SURVEY MONUMENT RECORD IS COMPLETE TO THE BEST OF MY KNOWLEDGE AND BELIEF.

Darren B. Krzanowski
DARREN B. KRZANOWSKI RLS 2663
DATED THIS 10TH DAY OF APRIL 2012



INDEX NO. T35N R5E M5









