

U S PUBLIC LAND SURVEY MONUMENT RECORD

NOTE: This form is intended and designed to fulfill all requirements of Wisconsin Administrative Code, Chapter A-E 7.08 U.S. Public Land Survey Monument Record (3) (a-i)

A-E 7.08(3)(a) Identity of corner:
 EAST 1/4 CORNER SECTION 14,
 TOWNSHIP 35 NORTH,
 RANGE 05 EAST OF THE 4TH PM,
 TOWN OF WILSON,
 COUNTY OF LINCOLN

WISCRS - LINCOLN COUNTY
 N: 245,641.913 USft (245,641.863)
 E: 359,758.274 USft (359,758.155)
 Datum: NAD83 (2011)
 GNSS Method RTN - Direct
 GNSS Control WISCORS VRS



The coordinate value shown has been verified by the average of two or more GPS observations at a markedly different time. Coordinates shown in parenthesis are provided by Lincoln County.

A-E 7.08(3)(b)

Original Surveyor: Joseph H. Jenkins

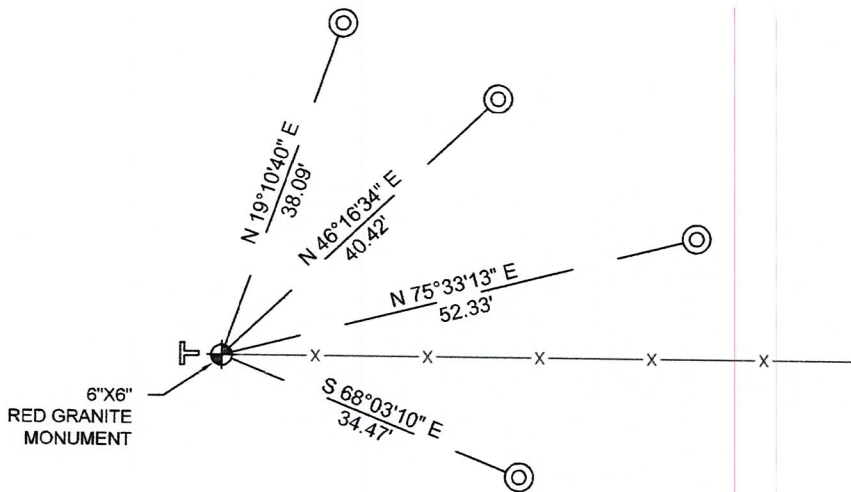
Date of Original Survey	Commenced:	September 25, 1862	Original Accessories:		
	Completed:	October, 1862	Spruce	8	N 70° W 9 Links
			Spruce	8	S 80° E 38 Links

1930's -1940's - Surveyor Francis Fuchs (aka Francis Fox) was known to set granite stone monuments in this area.
 October 9, 1996 - Surveyor 1192 - Lester J. Schmidt - indicate this position as "6"x6" red granite monument found in place" on Lincoln County map L213A.
 May 12, 2015 - Surveyor 2405 - Anthony R. Dallman - indicates this position as "found granite stone monument" on Lincoln County map S530B.
 October 2, 2015 - Surveyor 2343 - Kevin P. Bixby - indicates this position as "found 6"x6" granite stone ±1 foot above grade" on Lincoln County map S557B.

October 27, 2022 - While performing the 2022 Lincoln County PLSS Corner Remonumentation and GPS Services project, I found a 6" x 6" red granite stone near the computed position provided by Lincoln County. The monument extends ±12" above ground. I established 4 new reference monuments as shown below.

A-E 7.08(3)(c)(d) Plan view of corner with references to at least 4 witness monuments.

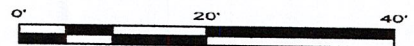
BEARINGS LISTED TO THE NEAREST SECOND ARE REFERENCED TO WISCONSIN COUNTY COORDINATE REFERENCE SYSTEM - LINCOLN COUNTY ZONE. ALL OTHER BEARINGS ARE MAGNETIC



RECEIVED BY LINCOLN COUNTY SURVEYOR THIS 27TH DAY OF December 20 22
Jeffrey DeMuth
 COUNTY SURVEYOR

LEGEND

- 6" x 6" red granite monument, found
- 7/8" diameter X 30" long - iron rod with 2" diameter aluminum cap, set
- Vinyl T-post, set ±2 feet west of corner



A-E 7.08(3)(e) 1862 Surveyor set a post, 1930's-40's Surveyor set a granite stone monument, 1996 Surveyor found a 6" x 6" red granite, 2015 surveyors both found a granite stone. I found a 6" x 6" red granite stone.

A-E 7.08(3)(f) I accept this monument as a FOUND PERPETUATED LOCATION of the corner.
 A-E 7.08(3)(g)(h) This corner was not determined through lost-corner-proportionate methods.

A-E 7.08(3)(i) I, Jeffrey L. DeMuth, Professional Land Surveyor No. S-2656, hereby certify that the corner location on this record was determined by the Lincoln County Surveyor, and the monuments found or set as shown hereon were measured by me or under my direction and control, and that this U.S. Public Land Survey Monument Record is correct and complete to the best of my knowledge, and belief.

Jeffrey L. DeMuth

 SIGNATURE

December 14, 2022

 DATE



K-21

REPORT

2022-Lincoln County PLSS Corner Remonumentation and GPS Services

Wisconsin Corner Point Identification Number: 43505142000

Surveyor: Jeffrey L. DeMuth – S2656

Corner monument: Found 6" x 6" red granite stone.

Field Book: Cardinal North – Lincoln Co. Remon. – 2022-00

Page: 60

Horizontal Datum: WisCRS – Lincoln County Zone – NAD83(2011)

Date / time of initial measurement:

October 27, 2022 - Start 10:07:15 CDT – End 10:43:18 CDT

Reference monuments:

4 – Set - 7/8" diameter X 30" long iron rods with 2" diameter Lincoln Co. aluminum cap.

Coordinate Table

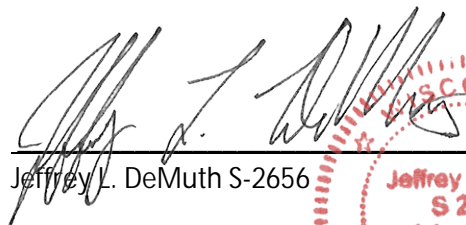
	County Provided	2022 Measurement	Difference
North	245641.863	245641.913	-0.05
East	359758.155	359758.274	-0.12

Observed coordinates match with existing coordinates within reason.

Request Data Log for more information.

Additional Notes:

Monument is on the east edge of a spruce swamp and extends $\pm 12"$ above grade. There is an old fence heading east from corner.



Jeffrey L. DeMuth S-2656



November 15, 2022

Date

43505142000_Mon-N



43505142000_North



43505142000_West



43505142000_South



43505142000_East

