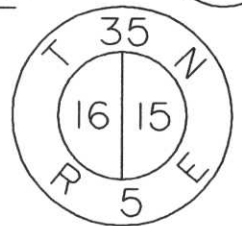


LINCOLN COUNTY U.S. PUBLIC LAND SURVEY MONUMENT LOCATION RECORD

INDEX NO.

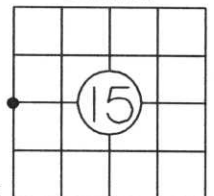
LANDMARK BENCHMARK _____
 CORNER IDENTITY: BERNSTEN ALUMINUM MONUMENT
 COORDINATE SYSTEM: LINCOLN CO. COORDINATES
 ZONE: _____ ADJUSTMENT: _____
 GRID: _____ GROUND: N 245739.8870 E 349200.8685
 COMBINATION FACTOR: BASED FROM WILSON GPS-CONVENTIONAL METHODS
 ELEVATION-(FEET): _____ (DATUM): NAD 83 (1991)
 DATE OF SURVEY: _____
 SURVEY PARTY: TONY JONES - SCOTT RIDDERBUSCH

FOUND
 SET
 RE-SET
 RE-TIED



WILSON
 CITY, VILLAGE, TOWN

SECTION



LOCATION
 INDICATED BY ●

BASIS FOR MONUMENT LOCATION:

(DESCRIBE METHOD OF SURVEY AND CORNER AUTHENTICATION)

ORIGINAL GOV'T SURVEY: OCTOBER 1862 BY JOSEPH H. JENKINS, SET WOOD POST FOR CORNER WITH BEARINGS, HEMLOCK 10" N41°E, 47 LINKS, AND MAPLE 10", S27°W, 45 LINKS

SEPTEMBER 1981 A SURVEY BY LESTER J. SCHMIT FOUND A 1"x23" IRON PIPE IN THE CENTER LINE OF COUNTY HIGHWAY "CC". HE SET A 30" BERNSTEN ALUMINUM MONUMENT 1/2" BELOW THE SURFACE OF THE BLACKTOP. SET WITNESSES BEARING, PK NAIL IN PP#3505-16R27, S86°W, 16.80', PK NAIL IN PP (NO TAG), N13°W, 92.94', 1 1/4" IRON PIPE, N89°E, 24.94', NORTHEAST CORNER OF HOUSE, S68°W, 78.22'.

APRIL 1999 BHA FOUND THE MONUMENT IN ROAD, FOUND THE POWER POLES HAD BEEN CUT AND COULD NOT LOCATE THE 1 1/4" IRON PIPE. THE HOUSE HAD BEEN UPLIFTED AND SET ON A FOUNDATION, RETIED THE MONUMENT TO THE CORNER OF THE CINDER BLOCK. SET WITNESSES AS SHOWN BELOW.

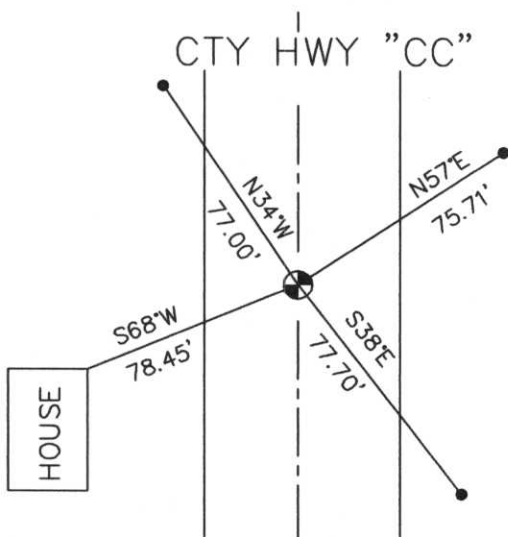
FIELD BOOK NO. _____ PAGE NO. _____
 BHA PROJECT NO: 99033

BY: Donald D. Frisque
 BY: DON FRISQUE S-1218
 DATE: 2/23/01

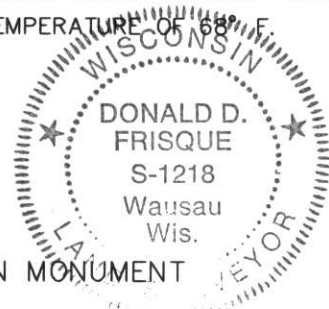
CERTIFIED IN ACCORDANCE WITH A-E 7.08: BECHER-HOPPE ASSOCIATES, INC.

TIE SKETCH:

SHOW MINIMUM OF FOUR (4) HORIZONTAL TIE DISTANCES TO FIXED WITNESS MONUMENTS. DESCRIBE ALL MONUMENTS FOUND OR SET. CORRECT ALL DISTANCES SHOWN AS STANDARD TEMPERATURE OF 68° F.



- FOUND BERNSTEN MONUMENT
- SET 3/4" REBAR W/CAP



RECEIVED AT LINCOLN COUNTY
 COURTHOUSE THIS 24TH DAY
 OF July 20 01
Tony Dalton
 LAND INFORMATION OFFICE

K-13

CERTIFIED LAND CORNER RESTORATION

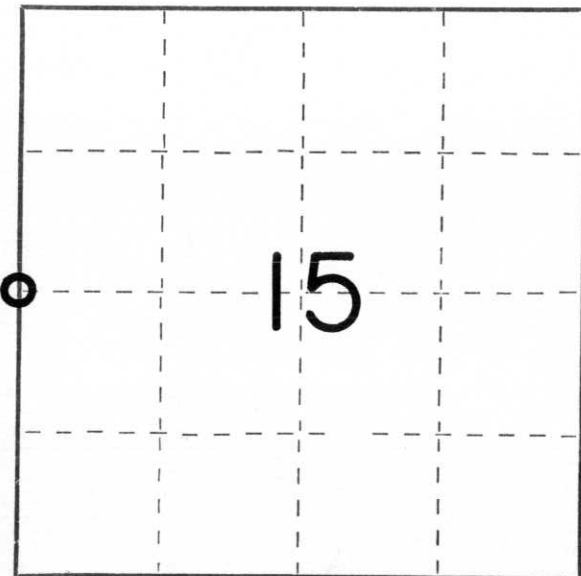
Index No. K-13

State of Wisconsin }
County of Lincoln } ss.

I Lester J. Schmit, do hereby certify that on the 10th day of April, 1977, I found evidence of the West 1/4 corner of Section 15 Township 35, North, Range 5 East, Fourth, Principal Meridian, as described hereon; and that from this evidence I established a new monument and accessories as described hereon to perpetuate the original location of this corner.

Resident witnesses:

.....
.....
.....



○ = Corner monument restored.

History of original corner establishment:

Surveyor: Joseph H. Jenkins
Date: October 1862
Monumentation: Wood Post
Witnesses: Hemlock 10, N 41° E, 47 links
Maple 10, S 27½° W, 45 links

Description of corner evidence found:

1" x 23" iron pipe in the centre-line of County Trunk Highway "CC"

Description of monument and accessories I established to perpetuate the original location of this corner.

30" Berntsen aluminum monument set 1/2" below surface of blacktop.

Witnesses: P.K. Nail in power pole # 3505-16R27, S 86° W, 16.80'
P.K. Nail in power pole (no tag), N 13° W, 92.94'
1 1/4" iron pipe, N 89° E, 24.94'
Northeast corner of house, S 68° W, 78.22'

Dated at Tomahawk, Wis., this 2nd day of September, 19 81.

Signature Lester J. Schmit Title Land Surveyor Registration No. S 1192
(County Surveyor, Registered Land Surveyor, or other duly authorized official)

Office of Register of Deeds, County of _____, I hereby certify that the within instrument was filed in this office for record on the _____ day of _____, 19 _____ at _____ o'clock _____ M.

.....
(Register of Deeds)

By _____ Deputy