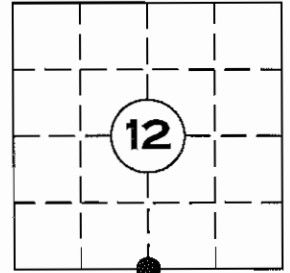


U.S. PUBLIC LAND SURVEY MONUMENT RECORD

NOTE: THIS FORM IS INTENDED AND DESIGNED TO FULFILL ALL REQUIREMENTS OF WISCONSIN ADMINISTRATIVE CODE CHAPTER A-E 7.08 U.S. PUBLIC LAND SURVEY MONUMENT RECORD (3) (a)(b)(c)(d)(e)(f)(g)(h)(i). AN ADDITIONAL SHEET MAY BE ADDED IF NECESSARY TO CONFIRM WITH SAID REQUIREMENTS.

(a) CORNER LOCATION:
 SOUTH QUARTER CORNER
 SECTION 12 TOWNSHIP 35 NORTH, RANGE 5 EAST
 TOWN OF WILSON, LINCOLN COUNTY
 LINCOLN COUNTY COORDINATES:
 NORTHING: 248279.670
 EASTING: 362258.683



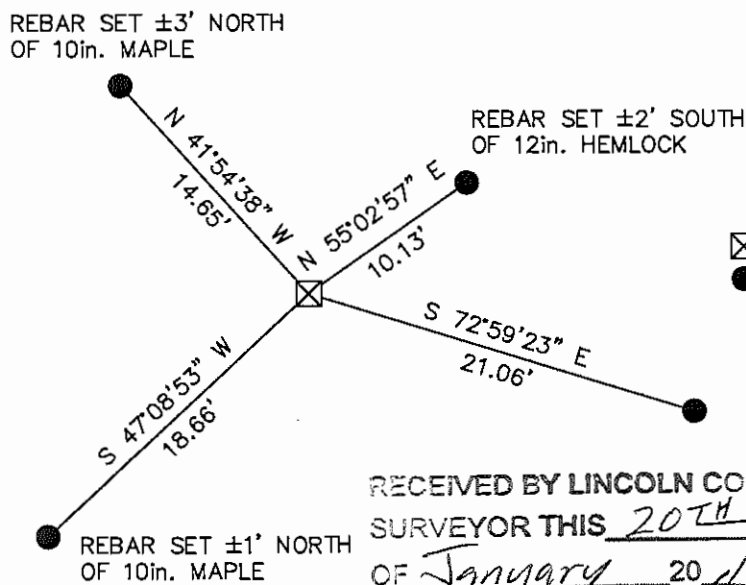
(b) HISTORY OF ORIGINAL CORNER:
 ORIGINAL SURVEYOR: JOSEPH H. JENKINS SEPT. 1862 – OCT 1862
 BIRCH 8 N 6° W 9 LINKS
 BIRCH 9 S 41° W 20 LINKS

(f)(g)(h) DESCRIPTION OF MONUMENT FOUND AT THIS CORNER AND IF IT WAS ACCEPTED STATE ALL EVIDENCE (MATERIAL, TESTIMONIAL, OCCUPATIONAL, PLATS, RECORDS, OTHER MONUMENTS) USED AS A BASIS FOR ESTABLISHING LOCATION. IF REESTABLISHED THROUGH LOST CORNER PROPORTIONATE METHODS, INDICATE ALL MONUMENTS, DISTANCES, AND DIRECTIONS USED TO ESTABLISH. INDICATE TYPE OF MONUMENT AND SIGN POST FOUND OR SET.

12 JANUARY 2012; FOUND A 6in. X 6in. GRANITE STONE WITH CHISELED CROSS IN GOOD CONDITION. THIS GRANITE STONE IS CONSISTENT WITH OTHERS FOUND IN THE AREA SET BY FRANCIS FOX, FORMER LINCOLN COUNTY SURVEYOR. ACCEPTED MONUMENT AND SET FOUR NEW WITNESS MONUMENTS

PREVIOUSLY MEASURED CORNER COORDINATES ON FILE:
 N: 248279.716
 E: 362258.457

(c)(d)(e) PLAN VIEW OF CORNER WITH TIES TO AT LEAST FOUR WITNESSES. IF IN DISAGREEMENT WITH PREVIOUSLY ESTABLISHED CORNER, SHOW THE DISTANCE BETWEEN THE TWO CORNERS AND ALSO INDICATED THE TIE TO THE DISPUTED CORNER.

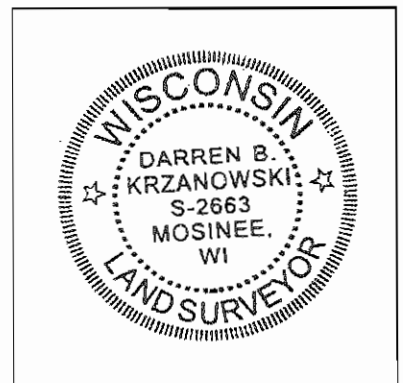


☒ = 6in. X 6in. GRANITE STONE FOUND
 ● = 3/4in. X 30in. REBAR 1.50lbs/ft. SET WITH ALUMINUM CAP

RECEIVED BY LINCOLN COUNTY
 SURVEYOR THIS 20TH DAY
 OF January 20 12
[Signature]
 COUNTY SURVEYOR

I DARREN B. KRZANOWSKI, REGISTERED LAND SURVEYOR NO. 2663, HEREBY CERTIFY THAT THE CORNER LOCATION ON THIS RECORD WAS REFERENCED BY ME OR UNDER MY DIRECTION AND CONTROL AND THAT THIS U.S. PUBLIC LAND SURVEY MONUMENT RECORD IS COMPLETE TO THE BEST OF MY KNOWLEDGE AND BELIEF.

[Signature]
 DARREN B. KRZANOWSKI RLS 2663
 DATED THIS 16TH DAY OF JANUARY, 2012



INDEX NO. T35N R5E 123







MARKER



