

U.S. PUBLIC LAND SURVEY MONUMENT RECORD

NOTE: This form is intended and designed to fulfill all requirements of Wisconsin Administrative Code, Chapter A-E 7 .08 U.S. Public Land Survey Monument Record (3)(a)(b)(c)(d)(e)(f)(g)(h)(i). An additional sheet may be added if necessary to conform with said requirements.

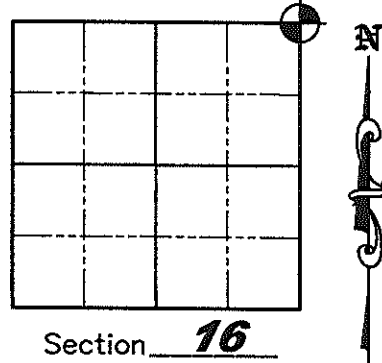
(a) Corner location: Township 35 North

Range 5 East

Town of Wilson

County of Lincoln

Lincoln County Coordinates N: 248360.327
E: 349154.435



(b)(f)(g)(h) Description of monument found at this corner and if it was accepted, state all evidence (material, testimonial, occupation, plats, records, other monuments) used as a basis for accepting. If not accepted or if nothing was found, state evidence used as a basis for establishing location. If reestablished through lost corner proportionate methods, indicate all monuments, distances and directions used to establish. Indicate type of monument found or set and sign post.

October 1, 1862 - Joseph H. Jenkins set wood Section post with bearing trees: Fir 8° S42-1/2°W, 41 links, Cedar 8° S34°E, 18 links, Cedar 9° N61°W, 24 links, Cedar 9° N22°E, 36 links.

1937 - Francis Fox notes on file at the Lincoln County Surveyor's Office note "Iron Section Corner Post - Stone not set as yet"

October 4, 1995 - U.S. Public Land Survey Monument Record by Lester Schmit, he "found a 2" x 2" x 18" iron bar for the corner. I replaced the iron bar with a Bermtsen monument for the corner and witnessed it as shown below." - set 7/8" by 30" iron rebar with 2" caps as witnesses as follows: N54°56'36"E, 21.70'; N54°56'36"E, 40.57'; N44°04'14"W, 24.27'; N44°04'14"W, 63.78'.

July 24, 2001 - Copy of October 4, 1995 - U.S. Public Land Survey Monument Record by Lester Schmit filed by unknown person(s) notes "Found 2" x 2" iron bar - no Bermtsen". New distances to witnesses where handwritten in as follows: N54°56'36"E, 21.55'; N54°56'36"E, 40.43'; N44°04'14"W, 24.20'; N44°04'14"W, 63.74'.

June-July, 2009 - Matthew E. Hogle found the 2" x 2" x 18" iron bar at corner in West rut of two-track woods road. Dug around bar and discovered the bar had been disturbed and was leaning. Located the ties from 1995 by Lester Schmit in good shape and position. Disregarded the July 24, 2001 tie distances as the iron bar was already disturbed by then and they only located the top. Replaced iron bar with new Bermtsen Monument set 0.7' below road surface. Took static post-processed GPS measurements to establish Lincoln County Coordinates and verified found witnesses as shown below.

(c)(d)(e) Plan view of corner with ties to at least 4 witness monuments. If in disagreement with previously established corner, show the distances between the two corners and also indicate the ties to the disputed corner.



Basis of Bearings:
Lincoln County
Coordinate System.

Not to Scale
Project # 878

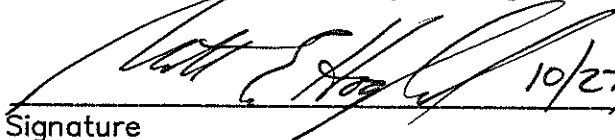
Legend

- Fd. 7/8" by 30" Iron Rod with Aluminum Cap
- ⊙ Set Bermtsen Aluminum Monument

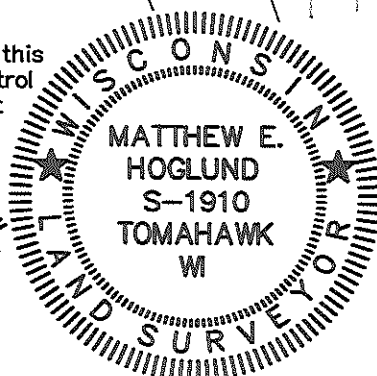
NOTE:

Corner falls in West rut of two-track woods road and is buried 0.7'

(i) I, Matthew E. Hogle, certify that the corner location on this record was determined by me under my direction and control and that this U.S. Public Land Survey Monument is correct and complete to the best of my knowledge and belief.


Signature

10/27/2009
Date



Woods Road
Also Found Corsonite Post
18.87'
S55°07'45"W
40.57'
21.70'
63.78'
39.51'
S43°49'22"E
24.27'

RECEIVED BY LINCOLN COUNTY INDEX NO. 1-13
SURVEYOR THIS 28TH DAY OF October 2009
Tom Bull
COUNTY SURVEYOR

U.S. PUBLIC LAND SURVEY MONUMENT RECORD

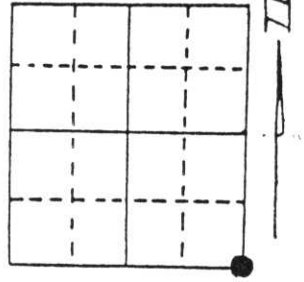
Note: This form is intended and designed to fulfill all requirements of Wisconsin Administrative Code, Chapter A-E 5.02, U.S. Public Land Survey Monument Record (3) (a) (b) (c) (d) (e) (f) (g) (h) (i). An additional sheet may be added if necessary to conform with said requirements.

(a) Corner location: Township 35 North

Range 5 East

Town/City/Village Wilson

County Lincoln



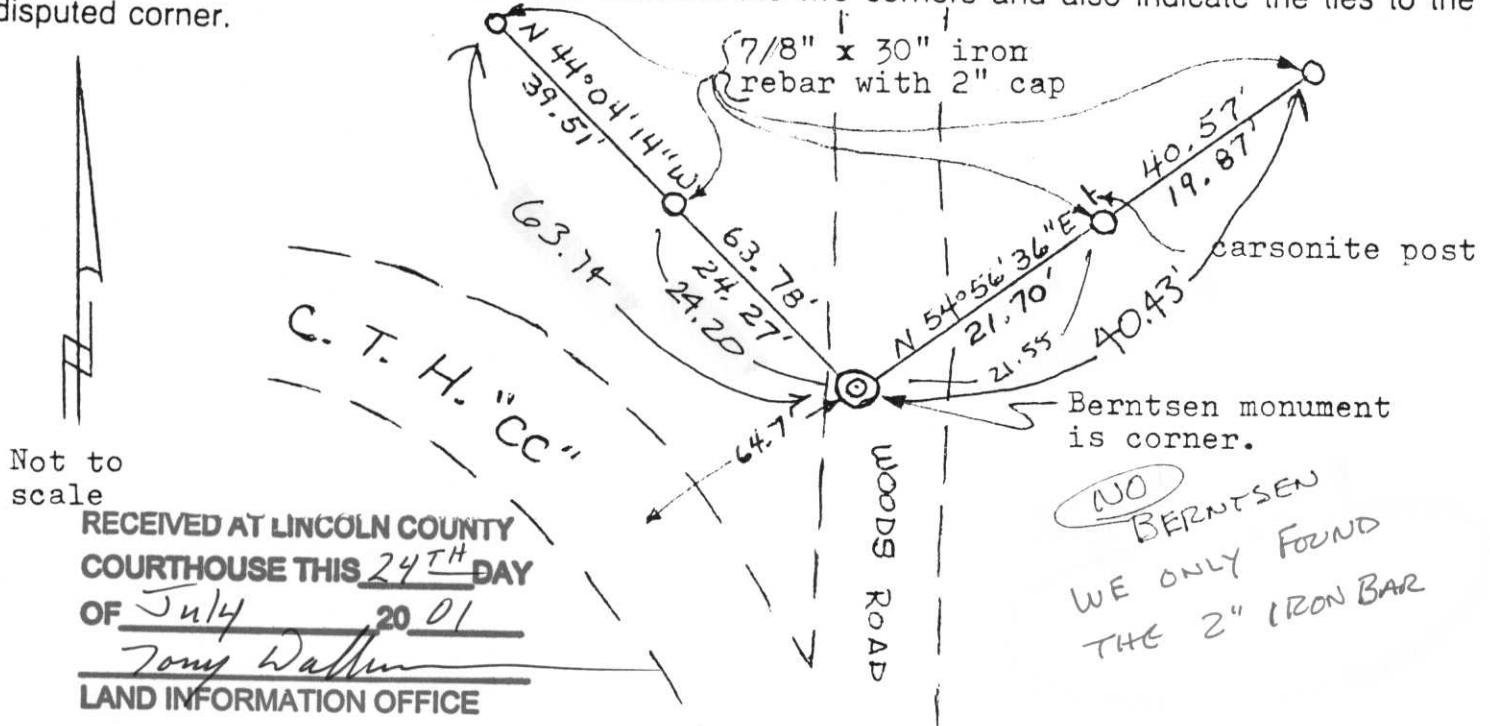
Section 9

(b) (f) (g) (h) Description of monument found at this corner and if it was accepted, state all evidence (material, testimonial, occupational, plats, records, other monuments) used as a basis for accepting. If not accepted or if nothing was found, state evidence used as basis for establishing location. If reestablished through lost corner proportionate methods, indicate all monuments, distances and directions used to establish. Original Gov't. Survey: October 1862 by Joseph H. Jenkins, set wood post for corner with bearings, fir 8 S 42½° W 41 links, cedar 8 S 34° E 18 links, cedar 9 N 61° W 24 links & cedar 9 N 22° E 36 links. During a survey by Francis F. Fox, he found an iron for the corner but did not replace it with a granite. I found a 2" x 2" x 18" iron bar for the corner. I replaced the iron bar with a Berntsen monument for the corner and witnessed it as shown below.

FD 2" x 2" IRON BAR

RECEIVED AT LINCOLN CO
COURTHOUSE THIS 4th
OF Oct. 1995
Pat Pinker
TAX DESCRIPTION 0

(c) (d) (e) Plan view of corner with ties to at least 4 witness monuments. If in disagreement with previously established corner, show the distances between the two corners and also indicate the ties to the disputed corner.



Not to scale
RECEIVED AT LINCOLN COUNTY
COURTHOUSE THIS 24TH DAY
OF July 2001
Tony Walker
LAND INFORMATION OFFICE

NO BERNTSEN
WE ONLY FOUND
THE 2" IRON BAR

i) I, Lester J. Schmit
(type or print name) certify that the corner location on this record was determined by me or under my direction and control and that this U.S. Public Land Survey Monument Record is correct and complete to the best of my knowledge and belief.

Lester J. Schmit 4 Oct 95
Signature Date



Index No. I-13

U.S. PUBLIC LAND SURVEY MONUMENT RECORD

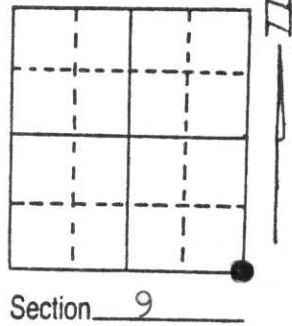
Note: This form is intended and designed to fulfill all requirements of Wisconsin Administrative Code, Chapter A-E 5.02, U.S. Public Land Survey Monument Record (3) (a) (b) (c) (d) (e) (f) (g) (h) (i). An additional sheet may be added if necessary to conform with said requirements.

(a) Corner location: Township 35 North

Range 5 East

Town/City/Village Wilson

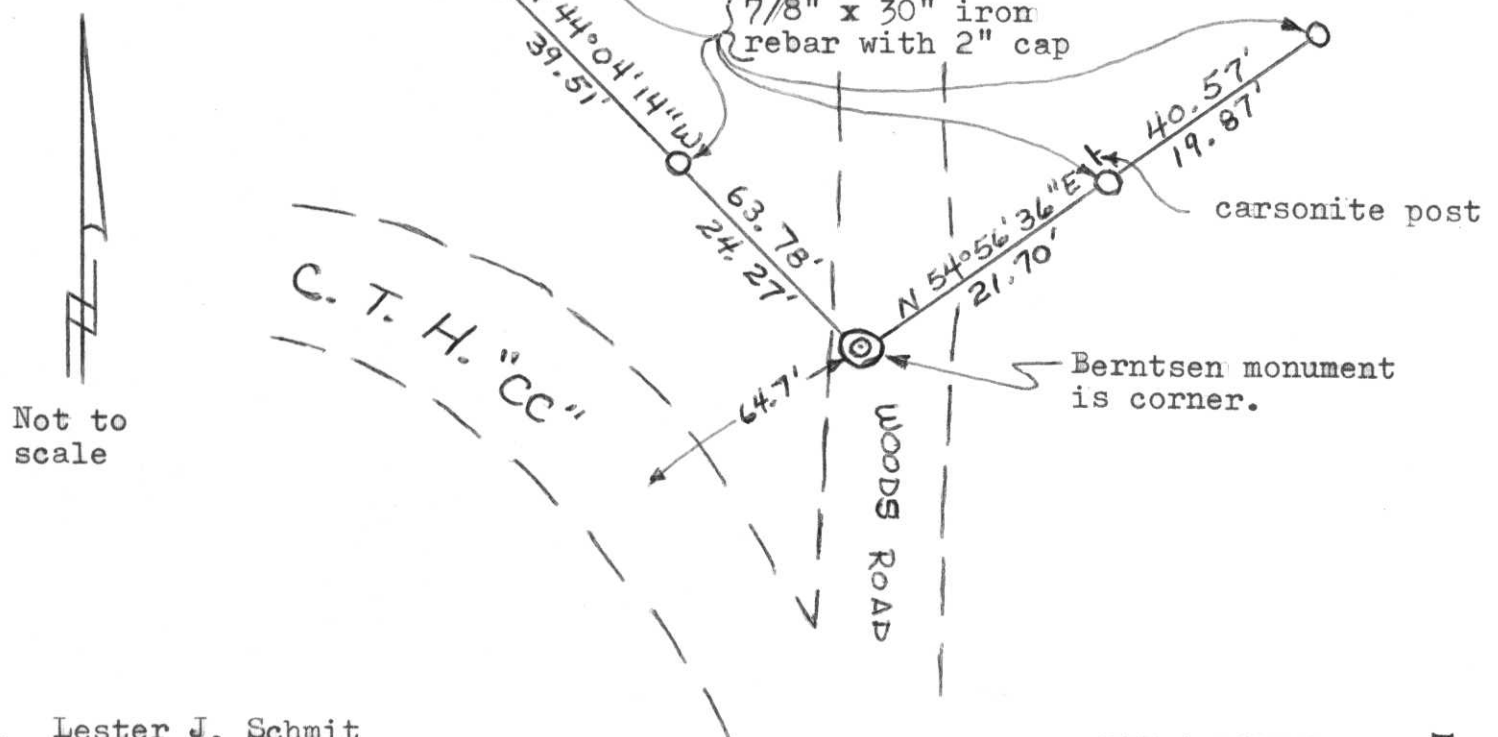
County Lincoln



(b) (f) (g) (h) Description of monument found at this corner and if it was accepted, state all evidence (material, testimonial, occupational, plats, records, other monuments) used as a basis for accepting. If not accepted or if nothing was found, state evidence used as basis for establishing location. If reestablished through lost corner proportionate methods, indicate all monuments, distances and directions used to establish. Original Gov't. Survey: October 1862 by Joseph H. Jenkins, set wood post for corner with bearings, fir 8 S 42½° W 41 links, cedar 8 S 34° E 18 links, cedar 9 N 61° W 24 links & cedar 9 N 22° E 36 links. During a survey by Francis F. Fox, he found an iron for the corner but did not replace it with a granite. I found a 2" x 2" x 18" iron bar for the corner. I replaced the iron bar with a Berntsen monument for the corner and witnessed it as shown below.

RECEIVED AT LINCOLN COUNTY
COURTHOUSE THIS 4th
OF Oct. **19** 95
Pat Priebe
TAX DESCRIPTION OF

(c) (d) (e) Plan view of corner with ties to at least 4 witness monuments. If in disagreement with previously established corner, show the distances between the two corners and also indicate the ties to the disputed corner.



Not to scale

(i) I, Lester J. Schmit

(type or print name) certify that the corner location on this record was determined by me or under my direction and control and that this U.S. Public Land Survey Monument Record is correct and complete to the best of my knowledge and belief.

Lester J. Schmit

Signature

4 Oct 95

Date



Index No. I-13