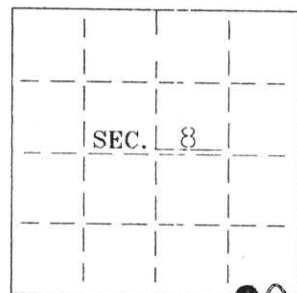


U. S. PUBLIC LAND SURVEY MONUMENT RECORD

Note: This form is intended and designed to fulfill all requirements of Wisconsin Administrative Code—Chapter A-E 7.08 U. S. Public Land Survey Monument Record (3)(a)(b)(c)(d)(e)(f)(g)(h)(i). An additional sheet may be added if necessary to conform with said requirements.

(a) CORNER LOCATION: State Plane Coordinates
 W. Meander corner of Sec. 8 X _____
 Township 35 North Y _____
 Range 5 East Datum Base _____
 Town Wilson County of Lincoln



(b) HISTORY OF ORIGINAL CORNER ESTABLISHMENT:
 Original Surveyor: James Millard
 Date of Survey: Commenced 1860
 Completed 1860

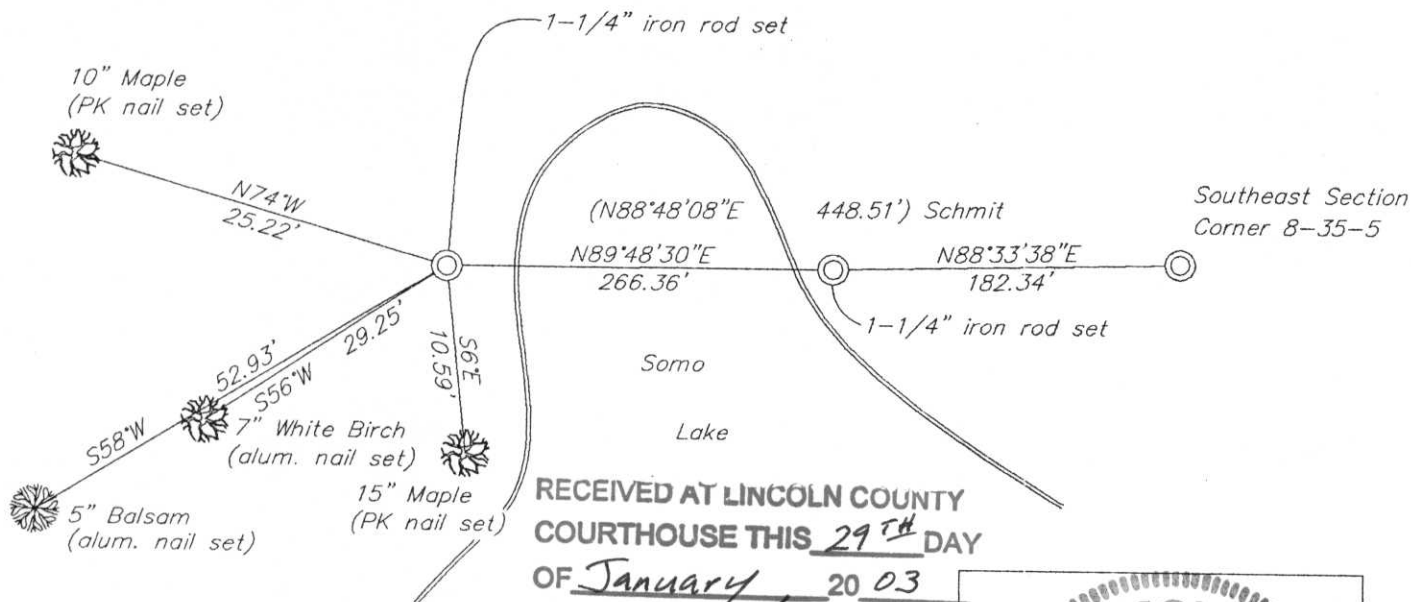
Original B.T.'S
 W. Pine 16" S2°E, 14 lks
 Birch 6" N67°E, 12 lks

(b)(f)(g)(h) Description of monument found at this corner and if it was accepted—state all evidence (material—testimonial—occupation—plats—records—other monuments) used as a basis for accepting. If not accepted or if nothing was found state evidence used as basis for establishing location. If reestablished through lost corner proportionate methods indicate all monuments—distances and directions used to establish. Indicate type of monument and sign post found or set.

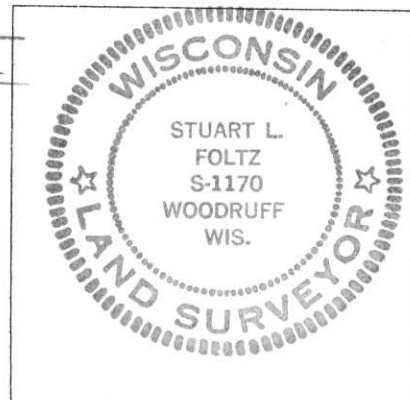
1979— A map by Lester Schmit shows he found a 1/2" iron pipe on the west shore of Somo Lake.

2001— I found and accepted a 1/2" iron pipe on the west shore of Somo Lake and replaced it with a 1-1/4" iron rod. The corner falls ±6.5' west and ±14' north of high water mark. I made 4 new BT's as shown below.

(c)(d)(e) Plan view of corner with ties to at least 4 witness monuments. If in disagreement with previously established corner—show the distances between the two corners and also indicate the ties to the disputed.



RECEIVED AT LINCOLN COUNTY
 COURTHOUSE THIS 29th DAY
 OF January 20 03
Tom Dalt
 LAND INFORMATION OFFICE



INDEX NO. I-89

(i) I Stuart L. Foltz S-1170 hereby certify that the corner location on this record was determined by me or under my direction and control and that this U.S. Public Land Survey Monument Record is correct and complete to the best of my knowledge and belief.

Stuart L. Foltz Signature 1/23/03 Date