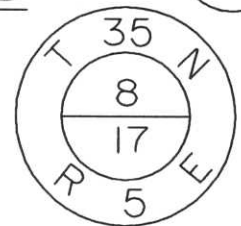


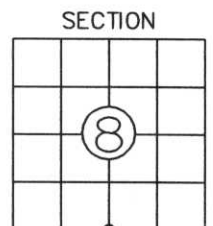
# LINCOLN COUNTY U.S. PUBLIC LAND SURVEY MONUMENT LOCATION RECORD

INDEX NO.

LANDMARK       BENCHMARK \_\_\_\_\_      FOUND   
 CORNER IDENTITY: 6"x6" RED GRANITE MONUMENT      SET   
 COORDINATE SYSTEM: \_\_\_\_\_      RE-SET   
 ZONE: \_\_\_\_\_ ADJUSTMENT: \_\_\_\_\_      RE-TIED   
 GRID: \_\_\_\_\_ GROUND: \_\_\_\_\_  
 COMBINATION FACTOR: \_\_\_\_\_  
 ELEVATION-(FEET): \_\_\_\_\_ (DATUM): \_\_\_\_\_  
 DATE OF SURVEY: JUNE 4, 1999  
 SURVEY PARTY: SCOTT RIDDERBUSCH - MARK MATTRISH



WILSON  
CITY, VILLAGE, TOWN



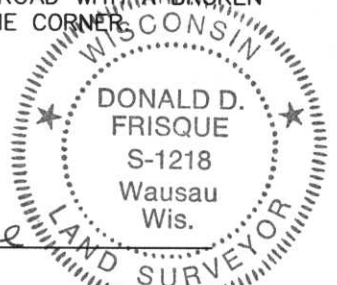
SECTION  
LOCATION INDICATED BY ●

## BASIS FOR MONUMENT LOCATION:

(DESCRIBE METHOD OF SURVEY AND CORNER AUTHENTICATION)

ORIGINAL GOV'T. SURVEY: OCTOBER 1862 BY JOSEPH H. JENKINS, SET WOOD POST FOR CORNER WITH BEARINGS, BIRCH 12", S45°E, 26 LINKS, BIRCH 8", N30°W, 28 LINKS.

JUNE 1999 BHA FOUND A 6"x6" GRANITE MONUMENT ON THE SOUTH SIDE OF FORRESTER ROAD WITH A BROKEN GREEN AND WHITE WITNESS POST SOUTH OF THE MONUMENT, ACCEPTED THE STONE AS THE CORNER. SET WITNESS TIES TO THE CORNER AS SHOWN BELOW.

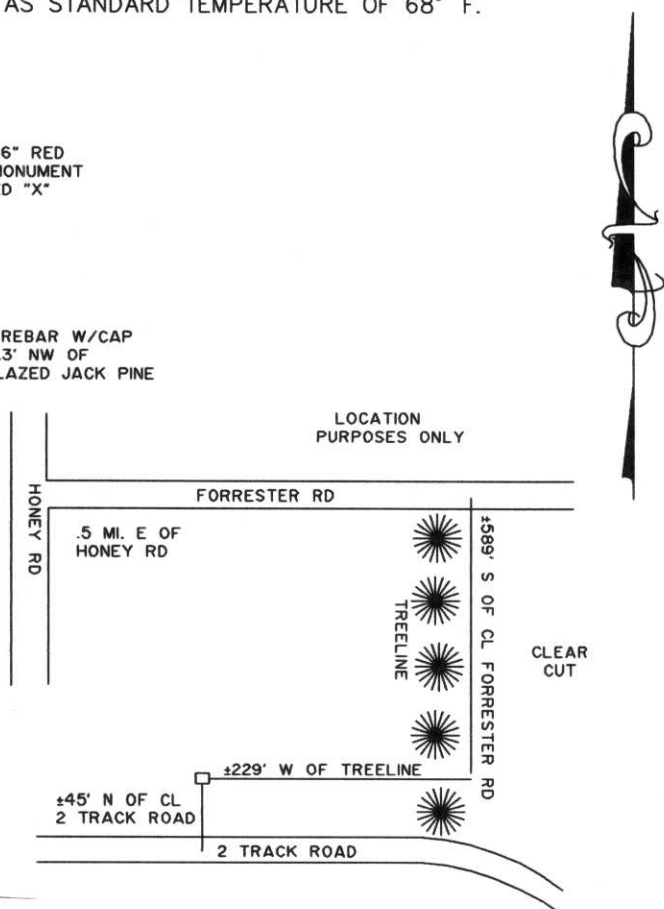
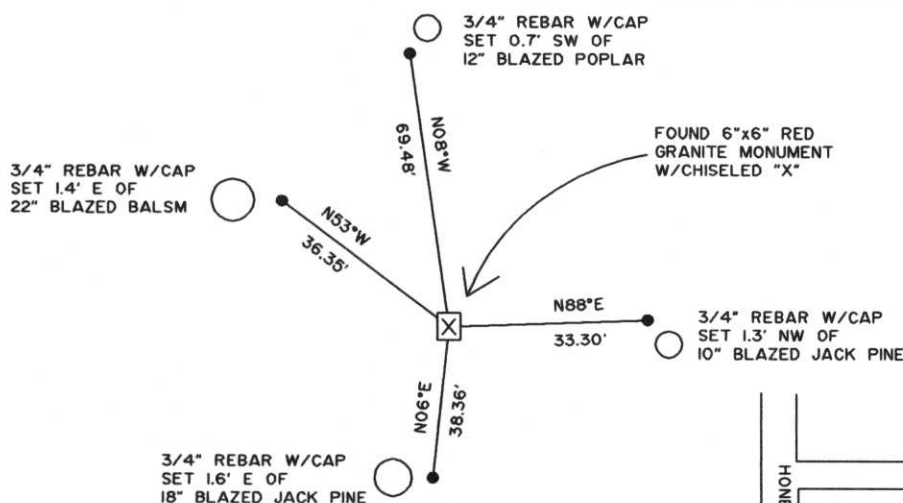


FIELD BOOK NO. \_\_\_\_\_ PAGE NO. \_\_\_\_\_  
 BHA PROJECT NO: 99033

BY: Donald D. Frisque  
 BY: DON D. FRISQUE, S-1218  
 DATE: 2/23/01 CERTIFIED IN ACCORDANCE WITH WISCONSIN STATUTE 17.08:  
 BECHER-HOPPE ASSOCIATES, INC.

## TIE SKETCH:

SHOW MINIMUM OF FOUR (4) HORIZONTAL TIE DISTANCES TO FIXED WITNESS MONUMENTS. DESCRIBE ALL MONUMENTS FOUND OR SET. CORRECT ALL DISTANCES SHOWN AS STANDARD TEMPERATURE OF 68° F.



RECEIVED AT LINCOLN COUNTY  
 COURTHOUSE THIS 24<sup>TH</sup> DAY  
 OF July 20 01  
Tommy Walker  
 LAND INFORMATION OFFICE

1-7