

U.S. PUBLIC LAND SURVEY MONUMENT RECORD

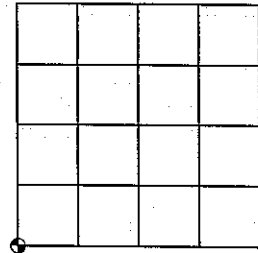
Note: This form is intended and designed to fulfill all requirements of the Wisconsin Administrative Code, Chapter A-E 7.08 U.S. Public Land Monument Record (3)(a)(b)(c)(d)(e)(f)(g)(h)(i). An additional sheet may be added if necessary to conform with said requirements.

(a) CORNER LOCATION:

SW corner of Sec. 1
 Township 35 North
 Range 5 East
 Town of Wilson
 County of Lincoln

COORDINATES - Lincoln Co. Grid

North: ██████████
 East: ██████████
 Control Station: ██████████
 Latitude: ██████████
 Longitude: ██████████
 Method: ██████████



(b) HISTORY OF ORIGINAL CORNER ESTABLISHMENT

Original Surveyor: Joseph H. Jenkins
 Date of Survey: Commenced September 25, 1862
 Completed October, 1862

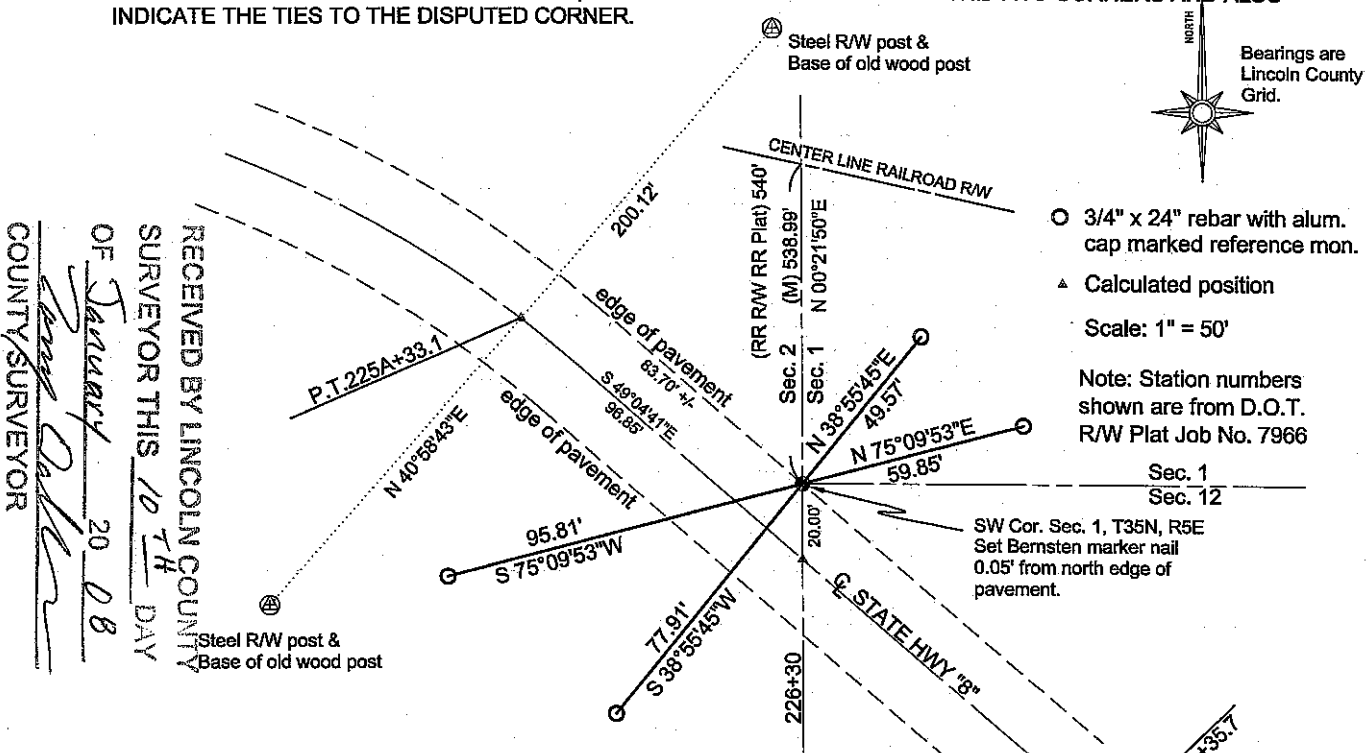
Original B.T.'S: 15" Hemlock, N52°W, 18 links
 10" Hemlock, S65°E, 21 links
 6" Hemlock, S57°W, 37 links
 22" White Pine, N60°W, 17 links

SECTION 1

(f)(g)(h) DESCRIPTION OF MONUMENT FOUND AT THIS CORNER AND IF IT WAS ACCEPTED, STATE ALL EVIDENCE (MATERIAL, TESTIMONIAL, OCCUPATIONS, PLATS, RECORDS, OTHER MONUMENTS) USED AS A BASIS FOR ESTABLISHING LOCATION. IF NOT ACCEPTED OF IF NOTHING WAS FOUND, STATE EVIDENCE USED AS BASIS FOR ESTABLISHING LOCATION. IF REESTABLISHED THROUGH LOST CORNER PROPORTIONATE METHODS, INDICATE ALL MONUMENTS, DISTANCES AND DIRECTIONS USED TO ESTABLISH. INDICATE TYPE OF MONUMENT AND SIGN POST FOUND OR SET.

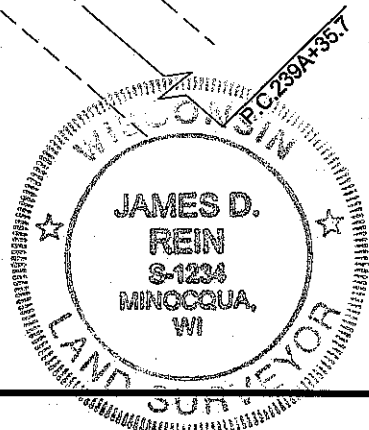
October 21, 2004: I James D. Rein, S-1234, searched for the southwest corner of Section 1, no corner monument or accessories were recovered. We tied in right-of-way posts and centerline of Highway "8" and used a D.O.T. right-of-way-Plat, Division Job No. 7906 to determine the position of the corner. December 10, 2004: we set a Bernsten marker nail 0.05' from the north edge of the pavement to monument the corner position. Reference monuments are as shown in the diagram below.

(c)(d)(e) PLAN VIEW OF CORNER WITH TIES TO AT LEAST 4 WITNESS MONUMENTS. IF IN DISAGREEMENT WITH PREVIOUSLY ESTABLISHED CORNER, SHOW THE DISTANCE BETWEEN THE TWO CORNERS AND ALSO INDICATE THE TIES TO THE DISPUTED CORNER.



(i) I, JAMES D. REIN, REGISTERED LAND SURVEYOR NO. S-1234 HEREBY CERTIFY THAT THE CORNER LOCATION ON THIS RECORD WAS DETERMINED BY ME OR UNDER MY DIRECTION AND CONTROL AND THAT THIS U.S. PUBLIC LAND SURVEY MONUMENT RECORD IS CORRECT AND COMPLETE TO THE BEST OF MY KNOWLEDGE AND BELIEF.

SIGNATURE: James D. Rein DATE: 1/18/05



INDEX NO. E-21