

U.S. PUBLIC LAND SURVEY MONUMENT RECORD

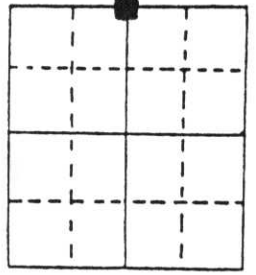
Note: This form is intended and designed to fulfill all requirements of Wisconsin Administrative Code, Chapter A-E 5.02, U.S. Public Land Survey Monument Record (3) (a) (b) (c) (d) (e) (f) (g) (h) (i). An additional sheet may be added if necessary to conform with said requirements.

(a) Corner location: Township 35 North

Range 5 East

Town/City/Village Wilson

County Lincoln



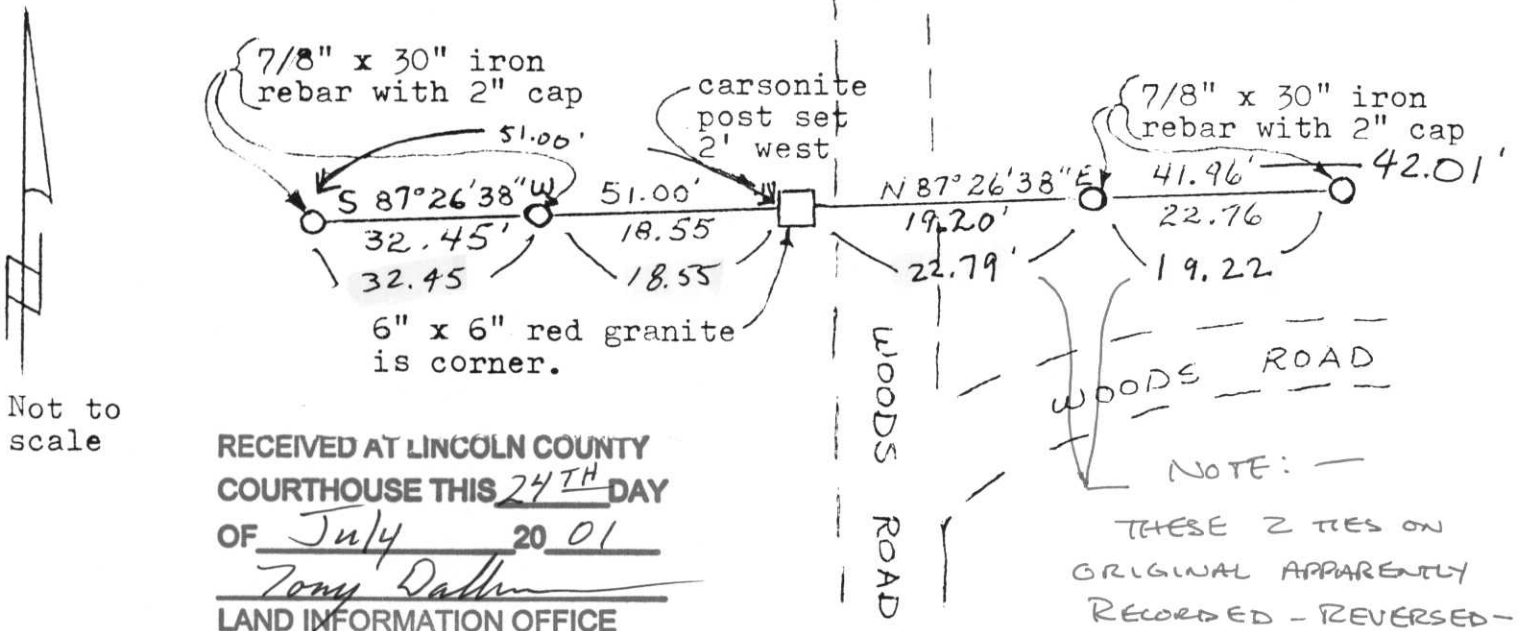
Section 9

FD
6" x 6"
GRANITE

(b) (f) (g) (h) Description of monument found at this corner and if it was accepted, state all evidence (material, testimonial, occupational, plats, records, other monuments) used as a basis for accepting. If not accepted or if nothing was found, state evidence used as basis for establishing location. If reestablished through lost corner proportionate methods, indicate all monuments, distances and directions used to establish. Original Gov't. Survey: October 1862 by Joseph H. Jenkins, set wood post for corner with bearings, hemlock 15 N 13° E 17 links & hemlock 11 S 68° W 9 links. A survey by Francis F. Fox found nothing for the corner or witnesses. He set a 6" x 6" red granite monument by single proportionate measurement between the Northeast & Northwest corners of the Section. I found his granite which is 7' west of the centre of a woods road. Set a 5/8" iron rod on the side of the granite for location purposes only. Witnessed the corner as shown below.

RECEIVED AT LINCOLN COUNTY
COURTHOUSE THIS 4th DAY
OF Oct 19 95
Pat. Phoenix
TAX DESCRIPTION OFFICE

(c) (d) (e) Plan view of corner with ties to at least 4 witness monuments. If in disagreement with previously established corner, show the distances between the two corners and also indicate the ties to the disputed corner.



Not to scale

i) I, Lester J. Schmit

(type or print name) certify that the corner location on this record was determined by me or under my direction and control and that this U.S. Public Land Survey Monument Record is correct and complete to the best of my knowledge and belief.

Lester J. Schmit

Signature

4 Oct 95

Date



Index No. E-11

U.S. PUBLIC LAND SURVEY MONUMENT RECORD

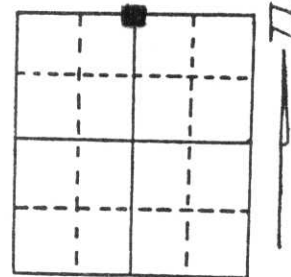
Note: This form is intended and designed to fulfill all requirements of Wisconsin Administrative Code, Chapter A-E 5.02, U.S. Public Land Survey Monument Record (3) (a) (b) (c) (d) (e) (f) (g) (h) (i). An additional sheet may be added if necessary to conform with said requirements.

(a) Corner location: Township 35 North

Range 5 East

Town/City/Village Wilson

County Lincoln

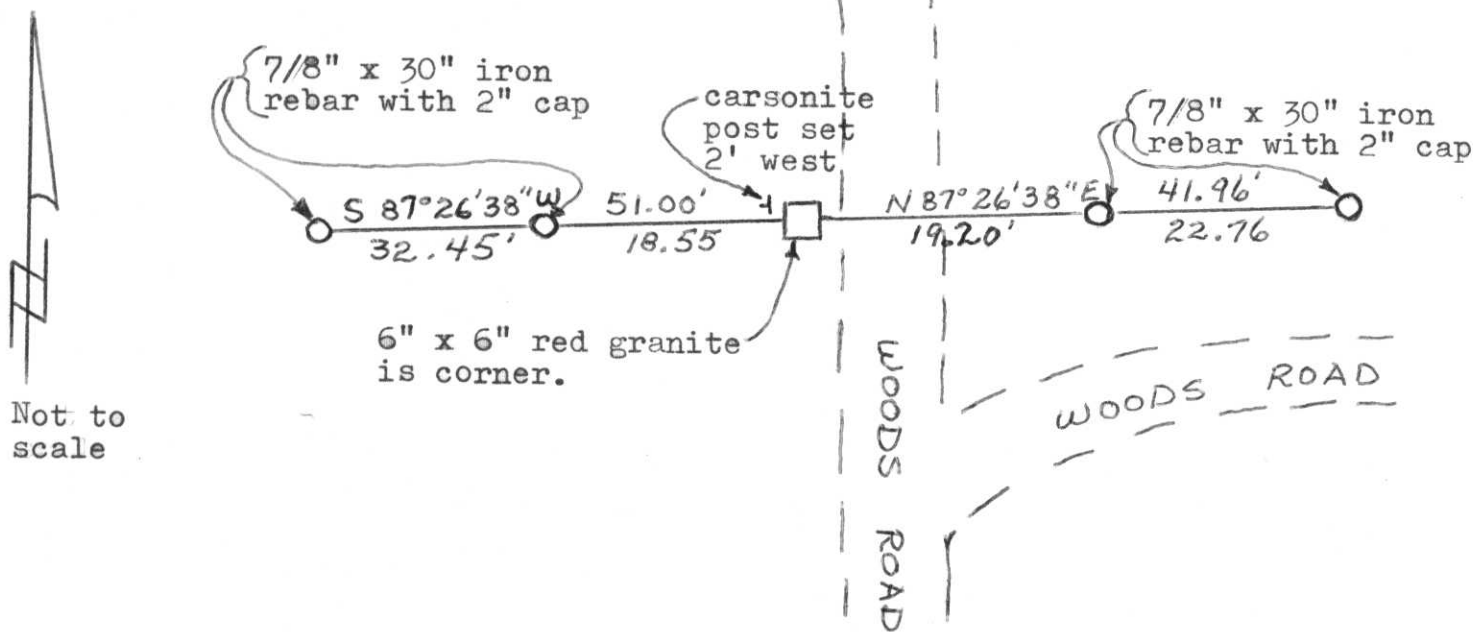


Section 9

(b) (f) (g) (h) Description of monument found at this corner and if it was accepted, state all evidence (material, testimonial, occupational, plats, records, other monuments) used as a basis for accepting. If not accepted or if nothing was found, state evidence used as basis for establishing location. If reestablished through lost corner proportionate methods, indicate all monuments, distances and directions used to establish. Original Gov't. Survey: October 1862 by Joseph H. Jenkins, set wood post for corner with bearings, hemlock 15 N 13° E 17 links & hemlock 11 S 68° W 9 links. A survey by Francis F. Fox found nothing for the corner or witnesses. He set a 6" x 6" red granite monument by single proportionate measurement between the Northeast & Northwest corners of the Section. I found his granite which is 7' west of the centre of a woods road. Set a 5/8" iron rod on the side of the granite for location purposes only. Witnessed the corner as shown below.

**RECEIVED AT LINCOLN COUNTY
COURTHOUSE THIS 4th DAY
OF Oct 19 95
Pat Pruebe
TAX DESCRIPTION OFFICE**

(c) (d) (e) Plan view of corner with ties to at least 4 witness monuments. If in disagreement with previously established corner, show the distances between the two corners and also indicate the ties to the disputed corner.



(i) I, Lester J. Schmit
(type or print name) certify that the corner location on this record was determined by me or under my direction and control and that this U.S. Public Land Survey Monument Record is correct and complete to the best of my knowledge and belief.

Lester J. Schmit 4 Oct 95
Signature Date



Index No. E-11





SM
UR
VE
Y





