

# U.S. PUBLIC LAND SURVEY MONUMENT RECORD

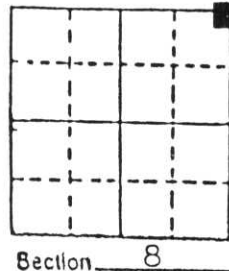
Note: This form is intended and designed to fulfill all requirements of Wisconsin Administrative Code, Chapter A-E 5.02, U.S. Public Land Survey Monument Record (3) (a) (b) (c) (d) (e) (f) (g) (h) (i). An additional sheet may be added if necessary to conform with said requirements.

(a) Corner location: Township 35 North

Range 5 East

Town Wilson

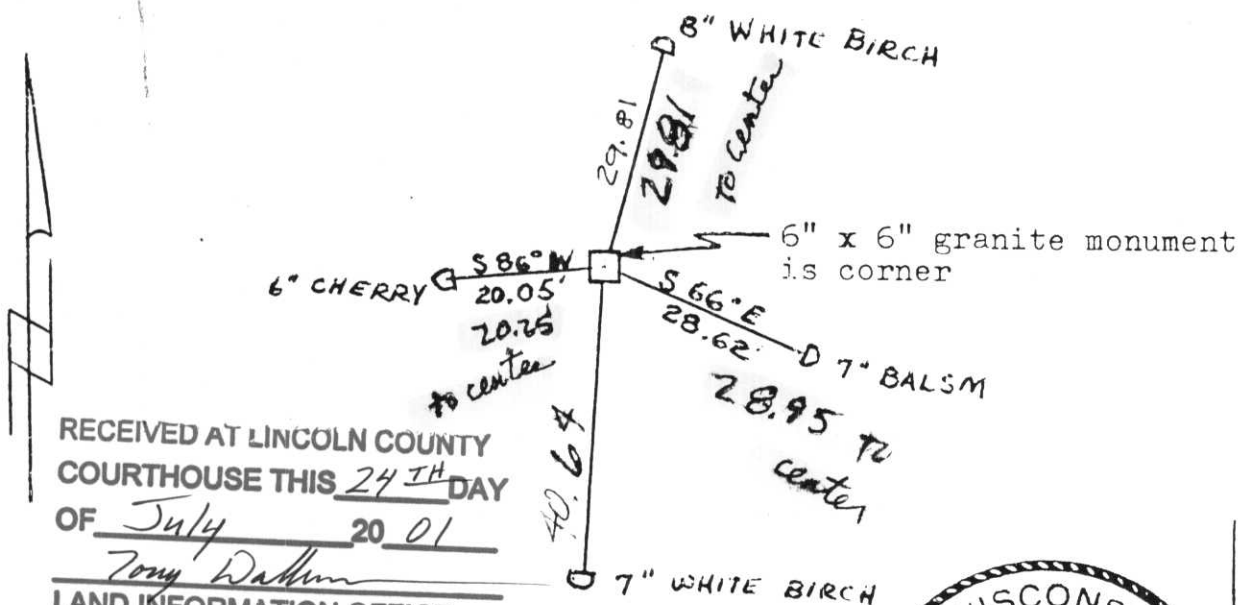
County Lincoln



b) (f) (g) (h) Description of monument found at this corner and if it was accepted, state all evidence (material, testimonial, occupational, plats, records, other monuments) used as a basis for accepting. If not accepted or if nothing was found, state evidence used as basis for establishing location. If reestablished through lost corner proportionate methods, indicate all monuments, distances and directions used to establish. Original Gov't. Survey: October 1862 by Joseph H. Jenkins, set wood post for corner with bearings, maple 12 N 40° W 37 links, birch 10 N 5° E 26 links, hemlock 10 S 19° E 23 links & birch 10 S 54° W 36 links. A survey by Francis Fox found an old wood post as acceptable evidence for corner. He replaced the wood post with a 6" x 6" granite monument to mark the corner. I found the granite monument which is mounded by stones as noted by Francis Fox.

FD

c) (d) (e) Plan view of corner with ties to at least 4 witness monuments. If in disagreement with previously established corner, show the distances between the two corners and also indicate the ties to the disputed corner.



RECEIVED AT LINCOLN COUNTY  
COURTHOUSE THIS 24<sup>TH</sup> DAY  
OF July 2001  
Tony Dabun  
LAND INFORMATION OFFICE

(i) I, Lester J. Schmit  
(type or print name) certify that the corner location on this record was determined by me or under my direction and control and that this U.S. Public Land Survey Monument Record is correct and complete to the best of my knowledge and belief.

Lester J. Schmit                      9 Apr 90  
Signature                                      Date



Index No. E-9

RECEIVED AT LINCOLN COUNTY  
COURTHOUSE THIS 9<sup>th</sup> DAY  
April 1990  
Pat Priebe

