

U.S. PUBLIC LAND SURVEY MONUMENT RECORD

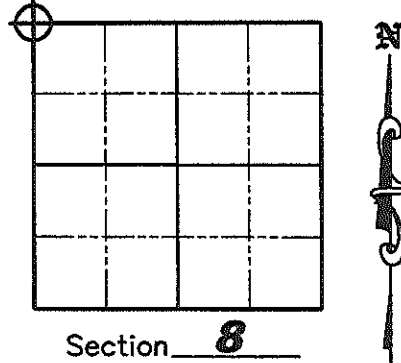
NOTE: This form is intended and designed to fulfill all requirements of Wisconsin Administrative Code, Chapter A-E 7 .08 U.S. Public Land Survey Monument Record (3)(a)(b)(c)(d)(e)(f)(g)(h)(i). An additional sheet may be added if necessary to conform with said requirements.

(a) Corner location: Township 35 North
Range 5 East

Town of Wilson

County of Lincoln

Lincoln County N 253580.429
Coordinates E 338500.842



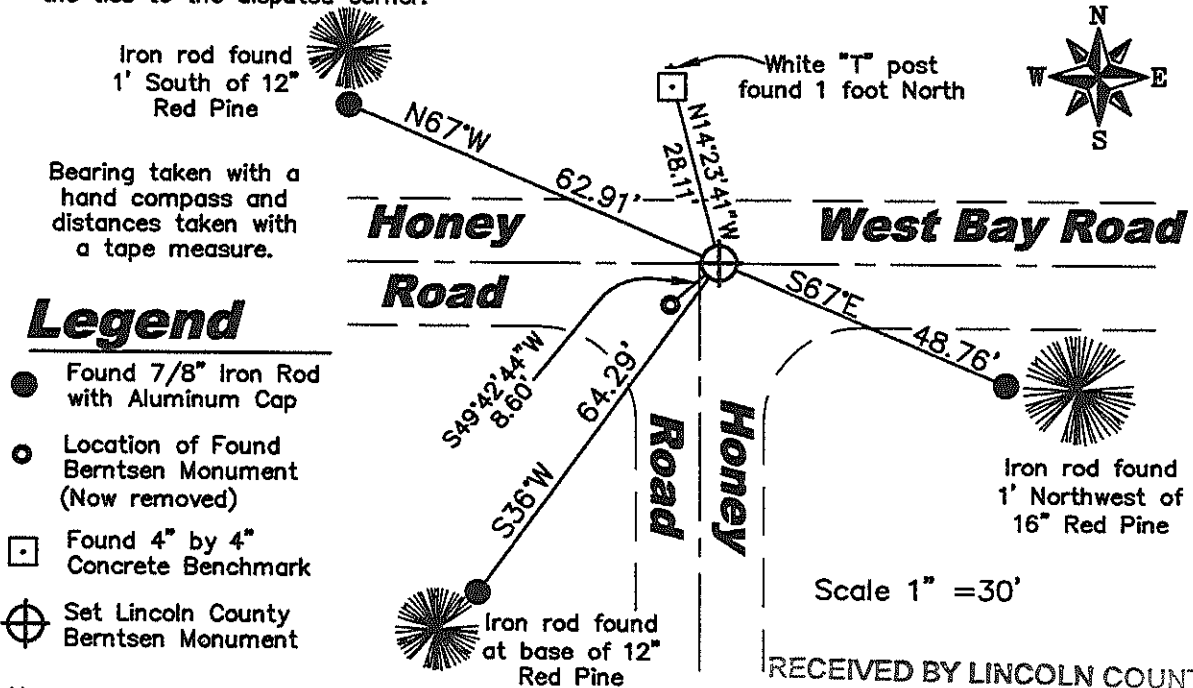
(b)(f)(g)(h) Description of monument found at this corner and if it was accepted, state all evidence (material, testimonial, occupation, plats, records, other monuments) used as a basis for accepting. If not accepted or if nothing was found, state evidence used as a basis for establishing location. If reestablished through lost corner proportionate methods, indicate all monuments, distances and directions used to establish. Indicate type of monument found or set and sign post.

September/October 1862 – Joseph H. Jenkins set 1/4 Section post with bearing trees: Hemlock 10" N45°W, 15 links, Hemlock 8" N52°E, 26 links, Hemlock 6" S27°W, 40 links, Hemlock 12" S38°W, 11 links.

May, 2007 – Kevin Bixby, while working in the adjoining Section 6 and using information from the U.S. Public Land Survey Monument Record for the West 1/4 Corner of Section 5 by Donald Frisque dated 2/23/2001, set Lincoln County Berntsen Monument based on backing in a straight line proportion from the Northeast corner of Section 6 and the East 1/4 corner of Section 6. He then set new witness corners.

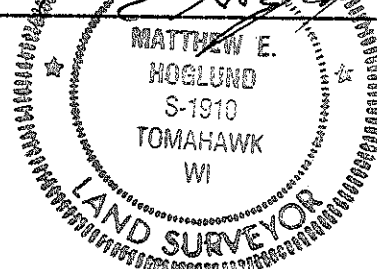
November 2007 – October, 2008 – Matthew E. Hoglund (SEE SHEET 2 FOR DETAILS OF REESTABLISHMENT OF THIS CORNER) Took new bearings and distances to the existing witness corners as shown below.

(c)(d)(e) Plan view of corner with ties to at least 4 witness monuments. If in disagreement with previously established corner, show the distances between the two corners and also indicate the ties to the disputed corner.



(i) I, Matthew E. Hoglund, certify that the corner location on this record was determined by me under my direction and control and that this U.S. Public Land Survey Monument is correct and complete to the best of my knowledge and belief.

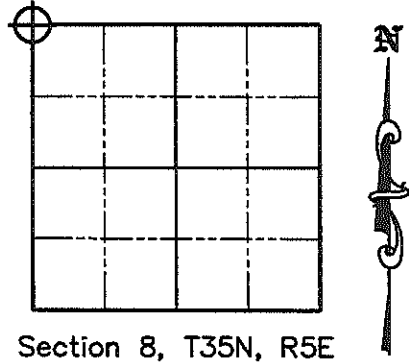
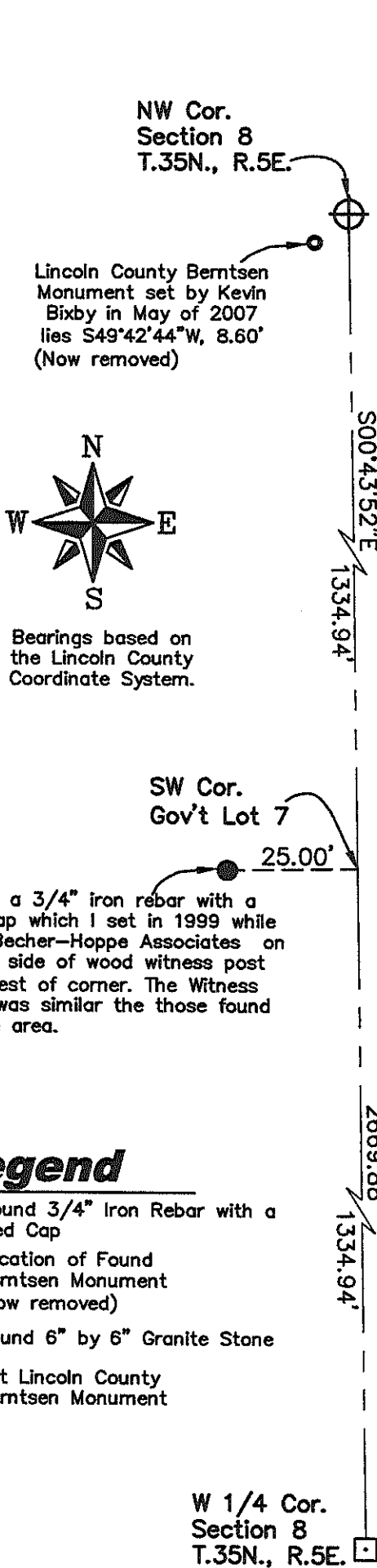
Signature: Matthew E. Hoglund Date: 11/10/2008
 RECEIVED BY LINCOLN COUNTY SURVEYOR THIS 10TH DAY OF November 2008
Tony Dallen
 COUNTY SURVEYOR



INDEX NO. E-5

E-5

U.S. PUBLIC LAND SURVEY MONUMENT RECORD



(b)(f)(g)(h) CONTINUED:

November 2007–October, 2008 – Matthew E. Høglund found the Lincoln County Berntsen Monument set in May of 2007 by Kevin Bixby, RLS No. S-2343, in the work in the adjoining Section 6. Kevin had used the information by Donald Frisque of Becher Hoppe Associates dated 2/23/2001 for the West 1/4 Corner of Section 5 to calculate the position of this corner by reverse proration. Matthew had done the original corner search, control survey and corner re-establishment while working for Becher Hoppe Associates in 1999 and knew this corner position was not set correctly. After searching through Becher Hoppe's files and analyzing the data and CAD files it was confirmed the NW corner position was calculated incorrectly and an error in the proration to set the West 1/4 corner of Section 5 was made. After meeting with the Surveyor and President of Becher Hoppe Associates, it was confirmed that the corner was not in the correct position. I re-established the corner position, by obliterated means, at the position from found monuments and witnesses by Francis Fox in Section 8 as shown on the drawing to the left.

After resetting the corner I contacted surveyor Kevin Bixby and notified him of the error in the corner position and the exact location we were moving the monument to. He agreed it needed to be corrected and thanked us for contacting him.

I removed the found Berntsen Monument and set a new one, stamped "RLS 1910" in the correct position as shown on the Plan View for items (c)(d)(e) on Sheet 1 hereof.

NOTE: See the U.S. Public Land Survey Monument Records for the West 1/4 Corner and South 1/4 Corner of Section 5 for more details as these corners had to be reset due to this corner being revised.

Legend

- Found 3/4" Iron Rebar with a Red Cap
- Location of Found Berntsen Monument (Now removed)
- Found 6" by 6" Granite Stone
- ⊕ Set Lincoln County Berntsen Monument

GRAPHIC SCALE



(IN FEET)
1 inch = 30 ft.

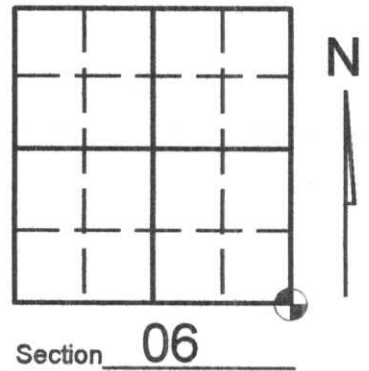
INDEX NO. E-5

U.S. PUBLIC LAND SURVEY MONUMENT RECORD

Note: This form is intended and designed to fulfill all requirements of Wisconsin Administrative Code, Chapter A-E 7.08 U.S. Public Land Survey Monument Record (3)(a)(b)(c)(d)(e)(f)(g)(h)(i). An additional sheet may be added if necessary to conform with said requirements.

(a) Corner location: Township 35 North
 Range 05 (Eas) West

Town/City/Village WILSON
 County LINCOLN

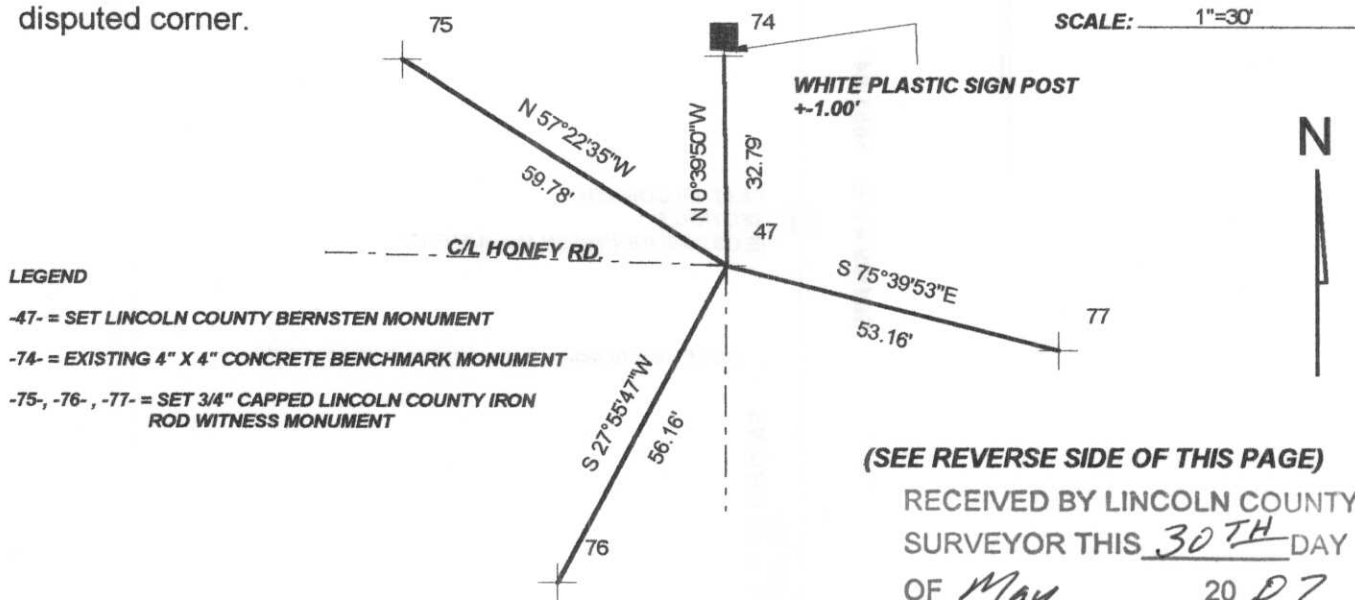


(b) (f) (g) (h) Description of monument found at this corner and if it was accepted, state all evidence (material, testimonial, occupational, plats, records, other monuments) used as a basis for accepting. If not accepted or if nothing was found, state evidence used as basis for establishing location. If reestablished through lost corner proportionate methods, indicate all monuments, distances and directions used to establish. Indicate type of monument found or set and sign post.

September 1862-October 1862: Joseph Jenkins set post and made the following B.T'S
 10" Hemlock N45°W, 15 Links
 8" Hemlock N52°E, 26 Links
 6" Hemlock S27°W, 40 Links
 12" Hemlock S38°W, 11 Links

May 2007: Kevin Bixby set Lincoln County Bernsten Monument based on straight line proportion backing in between the northeast corner of section 6 and the east 1/4 corner of section.
 (SEE DRAWING ON REVERSE SIDE OF THIS PAGE)

(c) (d) (e) Plan view of corner with ties to at least 4 witness monuments. If in disagreement with previously established corner, show the distances between the two corners and also indicate the ties to the disputed corner.

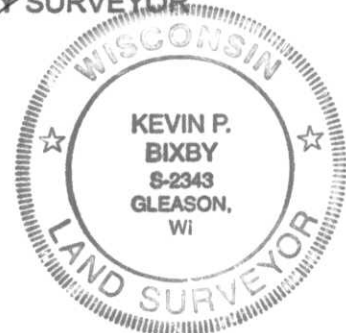


(i) I, KEVIN P. BIXBY

(type or print name) certify that the corner location on this record was determined by me or under my direction and control and that this U.S. Public Land Survey Monument Record is correct and complete to the best of my knowledge and belief.

Kevin P. Bixby
 Signature

05/28/07
 Date



Stamp

Index No.

E-5