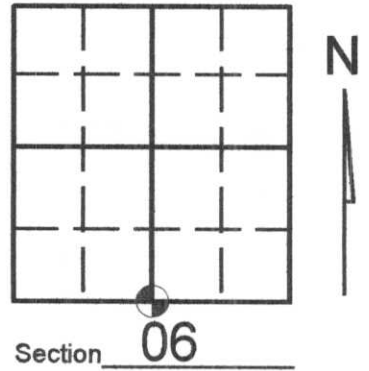


# U.S. PUBLIC LAND SURVEY MONUMENT RECORD

Note: This form is intended and designed to fulfill all requirements of Wisconsin Administrative Code, Chapter A-E 7.08 U.S. Public Land Survey Monument Record (3)(a)(b)(c)(d)(e)(f)(g)(h)(i). An additional sheet may be added if necessary to conform with said requirements.

(a) Corner location: Township 35 North  
 Range 05 (East) West

Town/City/Village WILSON  
 County LINCOLN

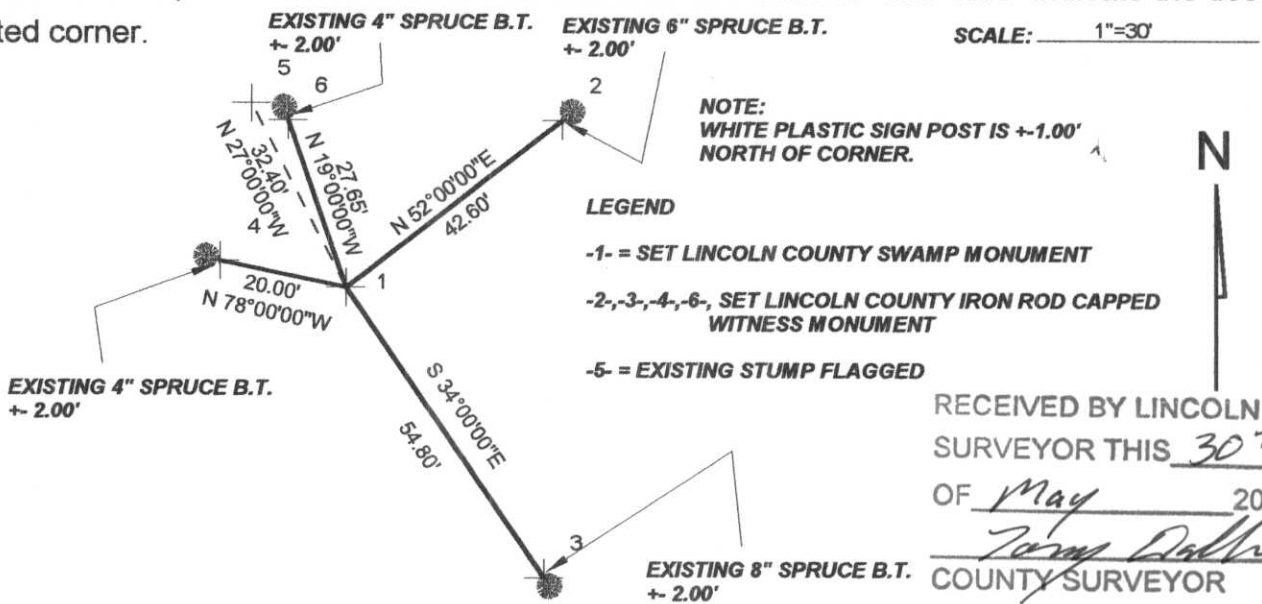


(b) (f) (g) (h) Description of monument found at this corner and if it was accepted, state all evidence (material, testimonial, occupational, plats, records, other monuments) used as a basis for accepting. If not accepted or if nothing was found, state evidence used as basis for establishing location. If reestablished through lost corner proportionate methods, indicate all monuments, distances and directions used to establish. Indicate type of monument found or set and sign post.

**September 1862: Joseph H. Jenkins set 1/4 section post and made the following B.T.'S**  
 3" Spruce, N14°W, 49 Links  
 3" Spruce, S69°E, 42 Links

**May 2007: Kevin Bixby found 4 bearing trees scribed, one stump flagged. See Bixby Land Surveying Inc. drawing number 389 for section breakdown. Set iron pipe over a mag pull for temporary monument while subdividing section 6. Found that this location for the south 1/4 corner kept the area in harmony with local Town Road locations and was the best available evidence for this corner location. Replaced iron pipe with Lincoln County swamp monument and witnessed as shown below.**

(c) (d) (e) Plan view of corner with ties to at least 4 witness monuments. If in disagreement with previously established corner, show the distances between the two corners and also indicate the ties to the disputed corner.



RECEIVED BY LINCOLN COUNTY SURVEYOR THIS 30<sup>TH</sup> DAY OF May 2007  
Kevin Bixby  
 COUNTY SURVEYOR

(i) I, KEVIN P. BIXBY  
 (type or print name) certify that the corner location on this record was determined by me or under my direction and control and that this U.S. Public Land Survey Monument Record is correct and complete to the best of my knowledge and belief.

Kevin P. Bixby Signature 05/28/07 Date



Stamp

Index No. \_\_\_\_\_

E-3