

U.S. PUBLIC LAND SURVEY MONUMENT RECORD

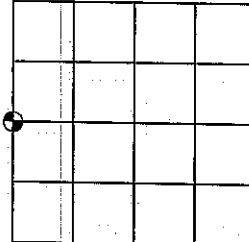
Note: This form is intended and designed to fulfill all requirements of the Wisconsin Administrative Code, Chapter A-E 7.08 U.S. Public Land Monument Record (3)(a)(b)(c)(d)(e)(f)(g)(h)(i). An additional sheet may be added if necessary to conform with said requirements.

(a) CORNER LOCATION:

West 1/4 corner of Section 1
 Township 35 North
 Range 5 East
 Town of Wilson
 County of Lincoln

COORDINATES - Lincoln Co. Grid

Control Station:
 Latitude:
 Longitude:
 Method:



(b) HISTORY OF ORIGINAL CORNER ESTABLISHMENT

Original Surveyor: Joseph H. Jenkins
 Date of Survey: Commenced September 25, 1862
 Completed October, 1862

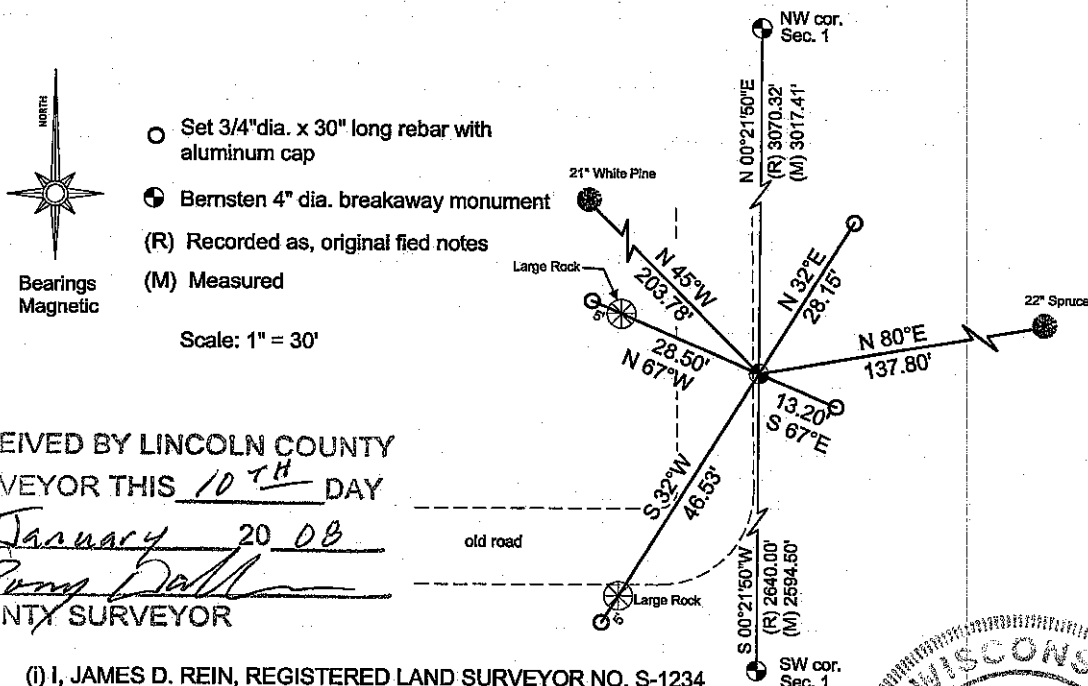
Original B.T.'S: Yellow Pine, 20", N34°W, 24 links
 Maple, 8", N10°E, 33 links

SECTION 1

(f)(g)(h) DESCRIPTION OF MONUMENT FOUND AT THIS CORNER AND IF IT WAS ACCEPTED, STATE ALL EVIDENCE (MATERIAL, TESTIMONIAL, OCCUPATIONS, PLATS, RECORDS, OTHER MONUMENTS) USED AS A BASIS FOR ESTABLISHING LOCATION. IF NOT ACCEPTED OF IF NOTHING WAS FOUND, STATE EVIDENCE USED AS BASIS FOR ESTABLISHING LOCATION. IF REESTABLISHED THROUGH LOST CORNER PROPORTIONATE METHODS, INDICATE ALL MONUMENTS, DISTANCES AND DIRECTIONS USED TO ESTABLISH. INDICATE TYPE OF MONUMENT AND SIGN POST FOUND OR SET.

December 3, 2004: I, James D. Rein, S-1234, searched for evidence of the west quarter corner, the south sixteenth corner, and the north sixteenth corner on the west line of Section 1. Found no evidence. There is an old road located on a line between the northwest section corner and the southwest section corner. There has been a substantial amount of excavation in the area of the west quarter corner. We restored the corner position by single proportionate measurement between section corners and monumented it with a Bernsten 4" dia. cast aluminum monument set below surface of road. Bearing trees and reference monument ties as shown in diagram below.

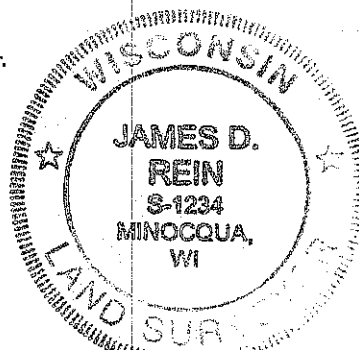
(c)(d)(e) PLAN VIEW OF CORNER WITH TIES TO AT LEAST 4 WITNESS MONUMENTS. IF IN DISAGREEMENT WITH PREVIOUSLY ESTABLISHED CORNER, SHOW THE DISTANCE BETWEEN THE TWO CORNERS AND ALSO INDICATE THE TIES TO THE DISPUTED CORNER.



RECEIVED BY LINCOLN COUNTY
 SURVEYOR THIS 10TH DAY
 OF January 20 08
James D. Rein
 COUNTY SURVEYOR

(I) I, JAMES D. REIN, REGISTERED LAND SURVEYOR NO. S-1234 HEREBY CERTIFY THAT THE CORNER LOCATION ON THIS RECORD WAS DETERMINED BY ME OR UNDER MY DIRECTION AND CONTROL AND THAT THIS U.S. PUBLIC LAND SURVEY MONUMENT RECORD IS CORRECT AND COMPLETE TO THE BEST OF MY KNOWLEDGE AND BELIEF.

James D. Rein
 SIGNATURE
1/18/2005
 DATE



INDEX NO. C-21