

# U.S. PUBLIC LAND SURVEY MONUMENT RECORD

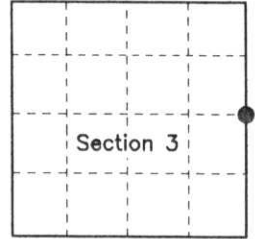
Note: This form is intended and designed to fulfill all requirements of Wisconsin Administrative Code A-E 7.08 3) (a-i).

(a) CORNER LOCATION

Corner: East 1/4 Corner  
 Section: 3  
 Township: T 35 N  
 Range: R 05 E  
 Town: Wilson Township  
 County: Lincoln

COUNTY GRID COORDINATES

X  
 Y  
 Datum:



(b) HISTORY OF ORIGINAL CORNER ESTABLISHMENT

Original Surveyor: Joseph H. Jenkins  
 Date of Survey: Commenced September 1862  
 Completed October 1862

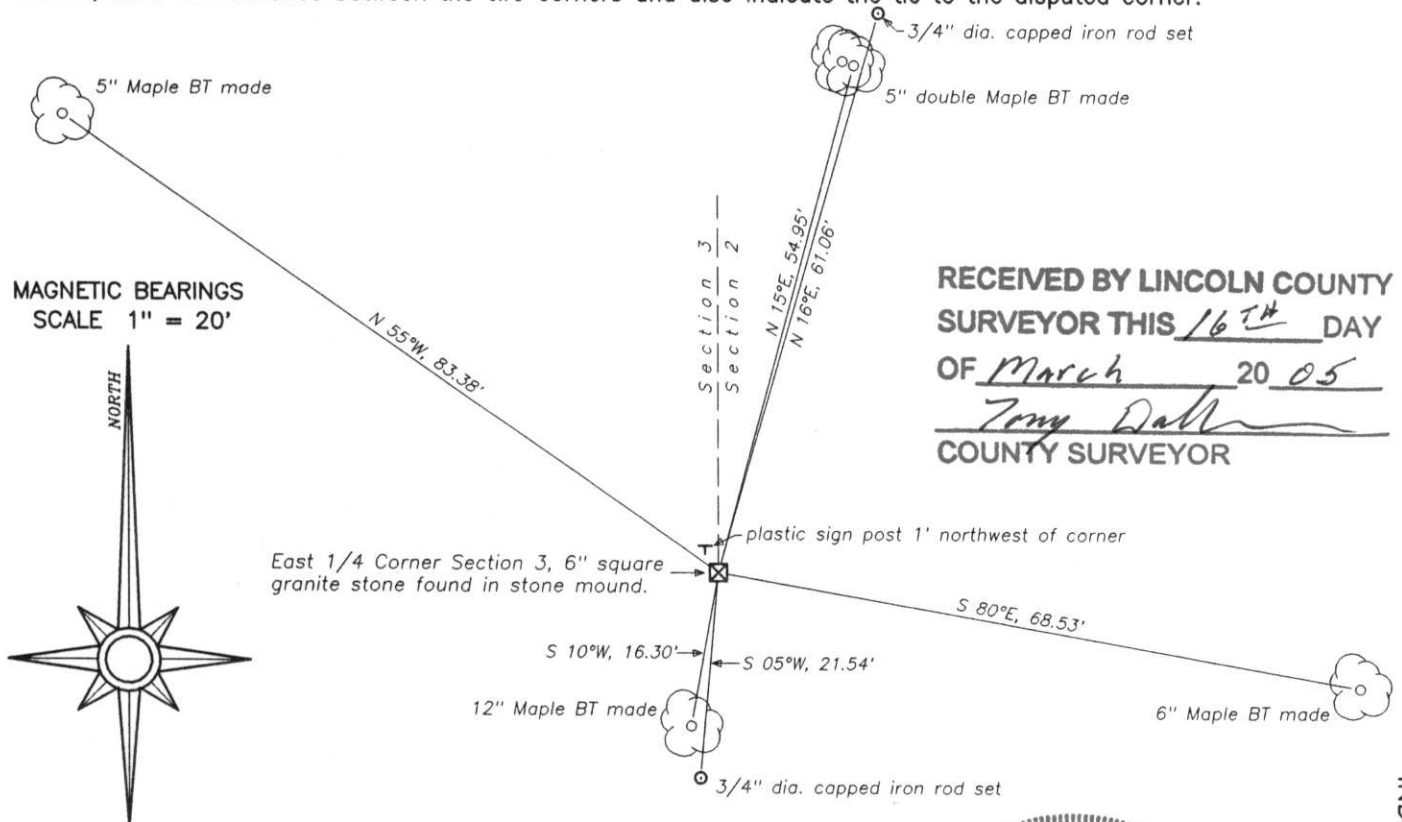
Original Bearing Trees: 14" W.Pine, S 77°W, 19lks  
 20" W.Pine, S 6°W, 9lks

(f)(g)(h) Description of monument found at this corner and if it was accepted, state all evidence (material, testimonial, occupational, plats, records, other monuments) used as a basis for establishing location. If reestablished through last corner proportionate methods, indicate all monuments, distances and directions used to establish. Indicate type of monument and sign post found or set.

Circa 1940 – Francis Fox, County Surveyor set a 6 inch square granite stone for 1/4 post. Fox's notes do not indicate if any bearing trees were made to witness this corner position.

November 16, 2004 – David A. Konopacky, R.L.S. 2566 found Fox's 6 inch square granite stone with chiselled 'X' across the top. Stone standing verticle in stone mound. I found no bearing trees and no evidence of the original bearing trees. I set a 3/8" diameter iron rod next to monument and I made four new bearing trees and set two 3/4" diameter capped iron rods as shown in the diagram below. Distances to bearing trees are measured to nail set in the side of the tree. I set a plastic witness post 1' northwest of corner.

(c)(d)(e) Plan view of corner with ties to at least 4 witnesses. If in disagreement with previously established corner, show the distance between the two corners and also indicate the tie to the disputed corner.



RECEIVED BY LINCOLN COUNTY  
 SURVEYOR THIS 16<sup>TH</sup> DAY  
 OF March 20 05  
*Tony Dall*  
 COUNTY SURVEYOR

(i) I, David A. Konopacky, Registered Land Surveyor No. 2566, hereby certify that the corner location on this record was referenced by me or under my direction and control and that this U.S. Public Land Survey Monument Record is correct and complete to the best of my knowledge and belief.

*[Signature]*  
 Signature

11-25-04  
 Date



INDEX NO. 6-17