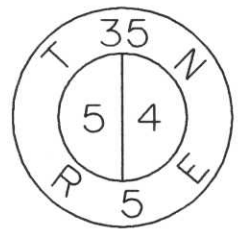


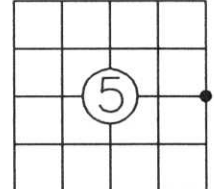
LINCOLN COUNTY U.S. PUBLIC LAND SURVEY MONUMENT LOCATION RECORD

INDEX NO.

LANDMARK BENCHMARK _____
 FOUND
 CORNER IDENTITY: 6"x6" RED GRANITE MONUMENT SET
 RE-SET
 COORDINATE SYSTEM: LINCOLN CO. COORDINATES RE-TIED
 ZONE: _____ ADJUSTMENT: _____
 GRID: _____ GROUND: N 256291.255 E 343742.094
 COMBINATION FACTOR: BASED FROM WILSON GPS- METHOD USING GPS
 ELEVATION-(FEET): _____ (DATUM): NAD 83 (1991)
 DATE OF SURVEY: NOVEMBER 4, 1999
 SURVEY PARTY: SCOTT RIDDRBUSCH-TONY JONES



WILSON
TOWN
SECTION



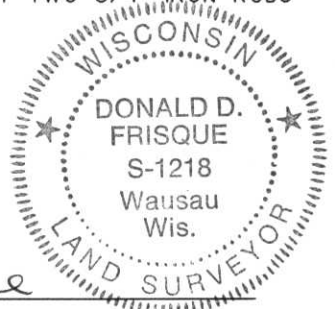
LOCATION INDICATED BY ●

BASIS FOR MONUMENT LOCATION:

(DESCRIBE METHOD OF SURVEY AND CORNER AUTHENTICATION)

ORIGINAL GOV'T SURVEY OCTOBER 1862 BY JOSEPH H. JENKINS, SET WOOD POST FOR CORNER CHAINING SOUTH BETWEEN SECTIONS 4 AND 5 AT 44.10 CHAINS. BT'S TAMARAC 8" N 55°E 16 LINKS, TAMARAC 8" N17°W 10 LINKS. IN 1937, FRANCIS FUCHS DID A DEPENDENT SURVEY ON LINCOLN COUNTY LANDS IN THE TOWN OF WILSON, SET A STONE AND MOUNDED IT WITH SAND AND STONE. BT'S TAMARAC 10" N43°E, 43.0', TAMARAC 6" S28°W, 29.9'.

FOUND MONUMENT TIPPED ON IT'S SIDE, ALSO FOUND AN OLD WOOD POST TIPPED ON IT'S SIDE BOTH MONUMENTS WERE UNDER TAGALDER BOG. SET STONE MONUMENT IN IT'S UPRIGHT POSITION AND SET TWO 3/4" IRON RODS FOR SUPPORT AND LOCATION PURPOSES ONLY. FOUND NO WITNESSES TO CORNER. WITNESSED THE CORNER AS SHOWN BELOW.

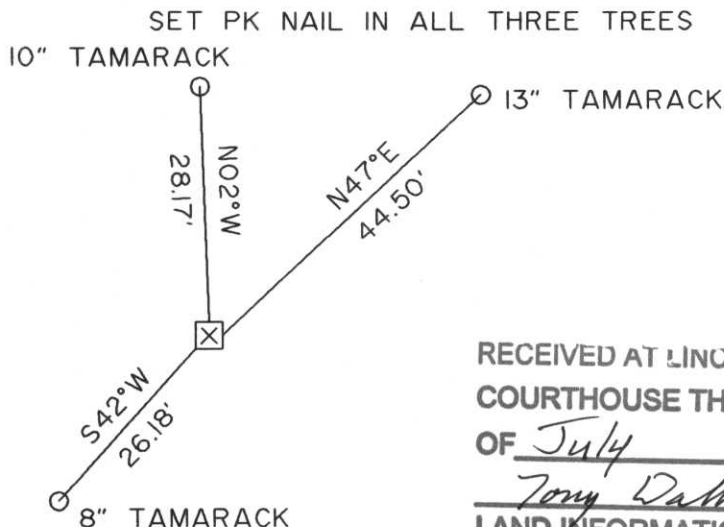


FIELD BOOK NO. _____ PAGE NO. _____
 BHA PROJECT NO: 99033

Donald W. Frisque
 BY: DONALD D. FRISQUE, S-1218
 DATE: 2/23/01 CERTIFIED IN ACCORDANCE WITH A-E 7.08:
 BECHER-HOPPE ASSOCIATES, INC.

TIE SKETCH:

SHOW MINIMUM OF FOUR (4) HORIZONTAL TIE DISTANCES TO FIXED WITNESS MONUMENTS. DESCRIBE ALL MONUMENTS FOUND OR SET. CORRECT ALL DISTANCES SHOWN AS STANDARD TEMPERATURE OF 68° F.



RECEIVED AT LINCOLN COUNTY
 COURTHOUSE THIS 24TH DAY
 OF July 20 01
Tony Dalton
 LAND INFORMATION OFFICE

6-9