

# U.S. PUBLIC LAND SURVEY MONUMENT RECORD

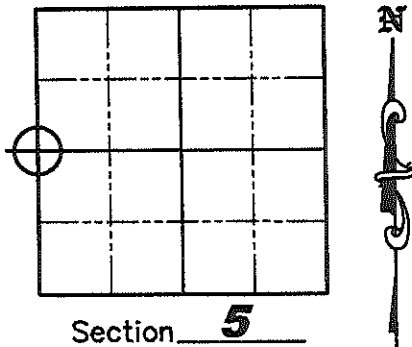
NOTE: This form is intended and designed to fulfill all requirements of Wisconsin Administrative Code, Chapter A-E 7 .08 U.S. Public Land Survey Monument Record (3)(a)(b)(c)(d)(e)(f)(g)(h)(i). An additional sheet may be added if necessary to conform with said requirements.

(a) Corner location: Township 35 North  
Range 5 East

Town of Wilson

County of Lincoln

Lincoln County N 256264.722  
Coordinates E 338443.318



(b)(f)(g)(h) Description of monument found at this corner and if it was accepted, state all evidence (material, testimonial, occupation, plats, records, other monuments) used as a basis for accepting. If not accepted or if nothing was found, state evidence used as a basis for establishing location. If reestablished through lost corner proportionate methods, indicate all monuments, distances and directions used to establish. Indicate type of monument found or set and sign post.

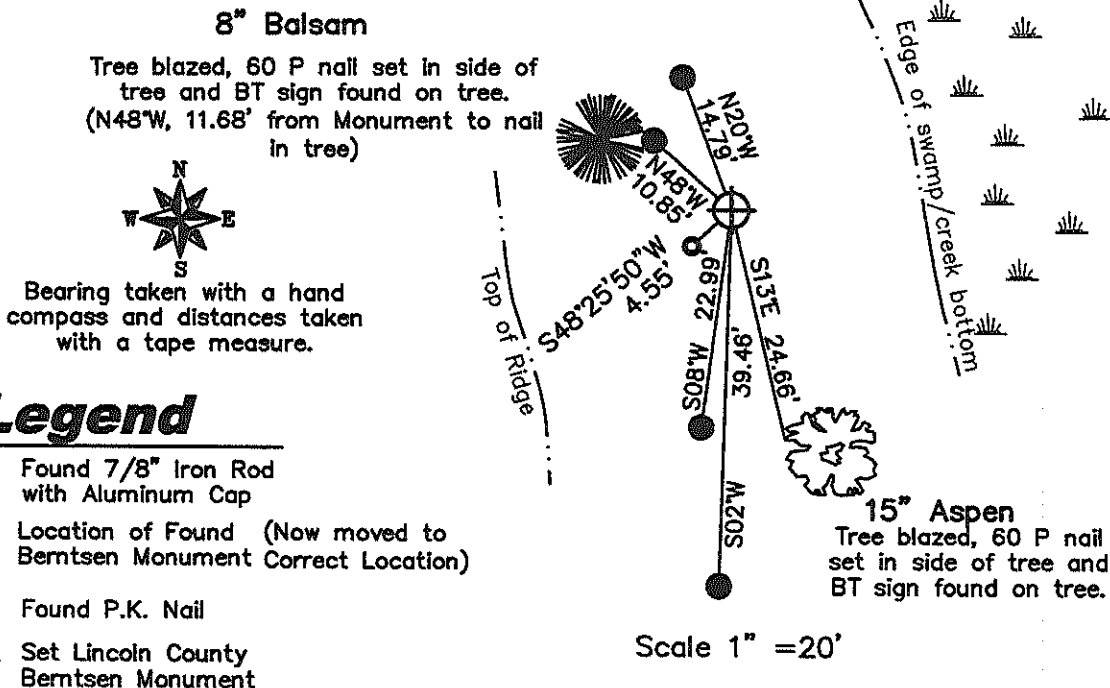
September/October 1862 – Joseph H. Jenkins set 1/4 Section post with bearing trees: Hemlock 10° N72°E, 13 links, Hemlock 12° S45°W, 18 links.

March 2000 – Donald D. Frisque with Becher–Hoppe Associates, Inc. "Conducted a search and found no available evidence for the corner. Set corner based on straight line proration". They also set 4 witness corners.

November 2007–May, 2008 – Matthew E. Hoglund (SEE SHEET 2 FOR DETAILS OF RE-ESTABLISHMENT OF THIS CORNER)

Took new bearings and distances to the existing witness corners as shown below.

(c)(d)(e) Plan view of corner with ties to at least 4 witness monuments. If in disagreement with previously established corner, show the distances between the two corners and also indicate the ties to the disputed corner.



## Legend

- Found 7/8" Iron Rod with Aluminum Cap
- Location of Found (Now moved to Berntsen Monument Correct Location)
- ▲ Found P.K. Nail
- ⊕ Set Lincoln County Berntsen Monument

(i) I, Matthew E. Hoglund, certify that the corner location on this record was determined by me under my direction and control and that this U.S. Public Land Survey Monument is correct and complete to the best of my knowledge and belief.

Signature Matthew E. Hoglund Date 11/10/2008

RECEIVED BY LINCOLN COUNTY SURVEYOR THIS 10<sup>TH</sup> OF November, 2008

Tony Dutt  
COUNTY SURVEYOR

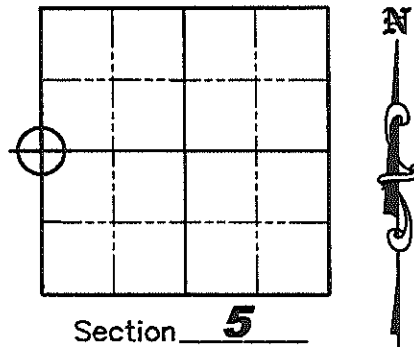
INDEX NO. C-5

# U.S. PUBLIC LAND SURVEY MONUMENT RECORD

(a) Corner location: Township 35 North  
 Range 5 East

Town of Wilson

County of Lincoln



November 2007–May, 2008 – Matthew E. Høglund found the Lincoln County Berntsen Monument set by Don Frisque, but knew the Southwest Corner position he used to prorate in this corner was not correct and that he had made an error in the proration calculations, as Matthew had done the original corner search, control survey and corner re-establishment while working for Becher Hoppe Associates in 1999. After meeting with the Surveyor and President of Becher Hoppe Associates, it was confirmed that the corner was not in the correct position.

I also contacted surveyor Kevin Bixby, RLS No. S-2343, as he used this corner position for work in the adjoining Section 6, and notified him of the error in the corner position and the exact location we were moving the monument to. He agreed it needed to be corrected and thanked us for contacting him.

I removed the found Berntsen Monument and reset it in the correct position as shown on the Plan View for items (c)(d)(e) on Sheet 1 hereof.

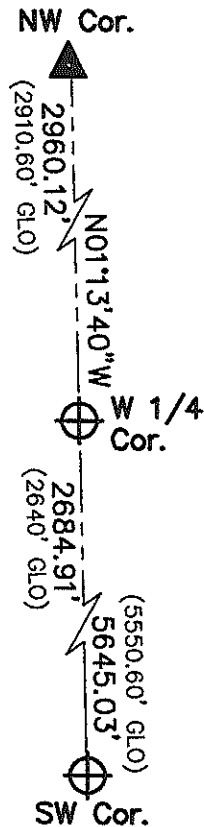
NOTE: See the U.S. Public Land Survey Monument Record for the Southwest Corner of Section 5 for more details.



Bearings based on the Lincoln County Coordinate System.

## Legend

- Found P.K. Nail
- Set Lincoln County Bernsten Monument

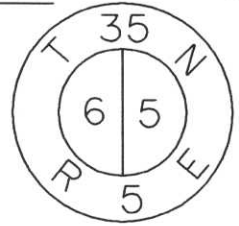


INDEX NO. C-5

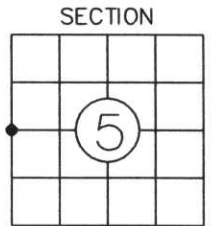
# LINCOLN COUNTY U.S. PUBLIC LAND SURVEY MONUMENT LOCATION RECORD

INDEX NO.

LANDMARK       BENCHMARK \_\_\_\_\_  
 FOUND   
 CORNER IDENTITY: BERNSTEN ALUMINUM MONUMENT      SET   
 RE-SET   
 COORDINATE SYSTEM: LINCOLN      RE-TIED   
 ZONE: \_\_\_\_\_ ADJUSTMENT: \_\_\_\_\_  
 GRID: \_\_\_\_\_ GROUND: \_\_\_\_\_  
 COMBINATION FACTOR: \_\_\_\_\_  
 ELEVATION-(FEET): \_\_\_\_\_ (DATUM): \_\_\_\_\_  
 DATE OF SURVEY: MARCH 24, 2000  
 SURVEY PARTY: TONY JONES - SCOTT RIDDERBUSCH



WILSON  
CITY, VILLAGE, TOWN



SECTION  
LOCATION INDICATED BY ●

## BASIS FOR MONUMENT LOCATION:

(DESCRIBE METHOD OF SURVEY AND CORNER AUTHENTICATION)

ORIGINAL GOVERNMENT SURVEY: OCTOBER 1862 BY JOSEPH H. JENKINS, SET WOOD POST FOR CORNER WITH BEARINGS, HEMLOCK 10, N72°E, 13 LINKS, HEMLOCK 12, S45°W, 18 LINKS.

MARCH 2000 BHA CONDUCTED A SEARCH AND FOUND NO AVAILABLE EVIDENCE FOR THE CORNER. SET CORNER BASED ON STRAIGHT LINE PRORATION.

FIELD BOOK NO. \_\_\_\_\_ PAGE NO. \_\_\_\_\_  
 BHA PROJECT NO: 1999.033

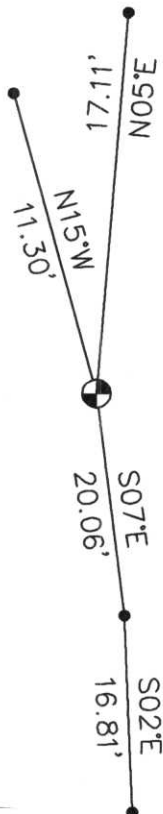
*Donald D. Frisque*  
 BY: DON FRISQUE S-1218  
 DATE: 2/23/01 CERTIFIED IN ACCORDANCE WITH A-E 7.08:  
 BECHER-HOPPE ASSOCIATES, INC.

## TIE SKETCH:

SHOW MINIMUM OF FOUR (4) HORIZONTAL TIE DISTANCES TO FIXED WITNESS MONUMENTS. DESCRIBE ALL MONUMENTS FOUND OR SET. CORRECT ALL DISTANCES SHOWN AS STANDARD TEMPERATURE OF 68° F.

### LEGEND

- ⊕ BERNSTEN MONUMENT SET IN PLACE
- 7/8" IRON ROD WITH ALUMINUM CAP SET IN PLACE



RECEIVED AT LINCOLN COUNTY COURTHOUSE THIS 24TH DAY OF July 20 01  
*Tony Dallen*  
 LAND INFORMATION OFFICE

1-5